

# Kildare Census 2022 Profile

# Agriculture



# Kildare Census 2022 Profile

## Agriculture

## **Agriculture Profile**

### **Key Facts:**

- Almost forty-three percent of farms in County Kildare are classified as specialist beef production farms – the highest proportion of any farm type in the county. This farm type is primarily focussed on the rearing and fattening of specialist cattle (specialist grazing livestock);
- Over fifteen percent of farms are classed as specialist tillage - specialist cereal, oilseeds and protein crops and general field cropping. This farm type has a clear spatial pattern with highest rates in the south of the county in the Athy MD;
- The median standard output per farm, in the year 2020 (€20,089) was the tenth highest in the State and similar to the eastern counties of Meath and Wicklow;

Agricultural land use in Kildare follows the suitability of the soil. The north and east of the county is dominated by pastureland. In the south, tillage farming assumes major importance and less than 40% of the land area is under pasture.

The average farm size (measured in both hectares and output levels) in Kildare is well above the national average throughout most of the county and especially in the south. Smaller farms are mostly concentrated in the north, midlands and west of the county as well as some pockets east of Naas.

A recent survey from Teagasc (2022), has noted that Kildare has the most expensive land in the country, with good quality land fetching an average of just over €15,000 per acre. The average price of good quality land on holdings of less than 50 acres in Kildare is €15,333 per acre, followed by Meath (€15,200) and Waterford (€15,000).

Whilst County Kildare is well known for its rich pasturelands, 32% of land in the county is considered marginal (of little use to traditional farming practices). In this way, there are very diverse agricultural practices in Kildare from the thriving horse industry to the past harvesting of peat from the bogland in the west. Ireland's Programme for the EU Just Transition Fund has recently been launched with a €169 million fund to support communities most negatively affected by the move away from fossil fuels and the cessation of commercial peat extraction. Both the Athy and Clane-Maynooth Municipal Districts will benefit from their inclusion as part of the 'designated territories' by the Department of the Environment, Climate and Communications fund.

Median Standard Output\* (€) per farm, 2020



\*The Standard Output (SO) of an agricultural product is defined as the average monetary value of the agricultural output at farm-gate prices. It is not a measure of farm income. It does not take into account costs, direct payments, value added tax or taxes on products.

Figure 9.1 - Median Standard Output (€), 2020 (Source: CSO)

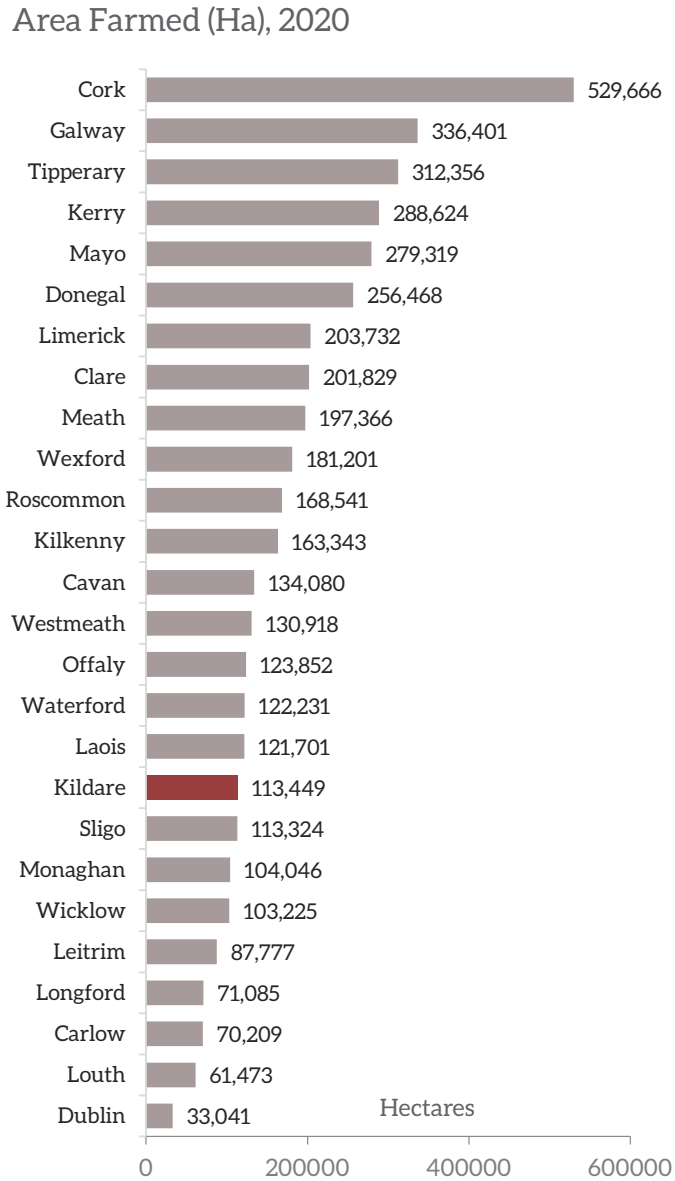


Figure 9.2 - Area Farmed (Ha), 2020 (Source: CSO)

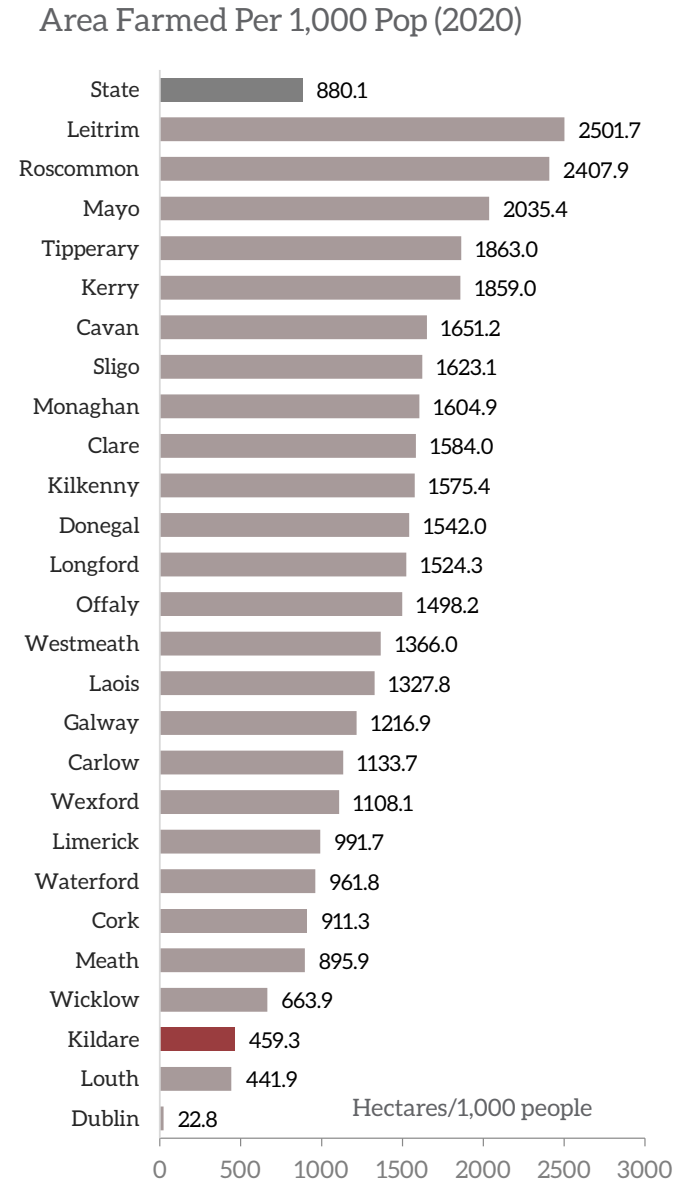


Figure 9.3 - Area Farmed Per 1,000 Population, 2020 (Source: CSO)

Census of Agriculture - Farm Types by Local Authority, 2020

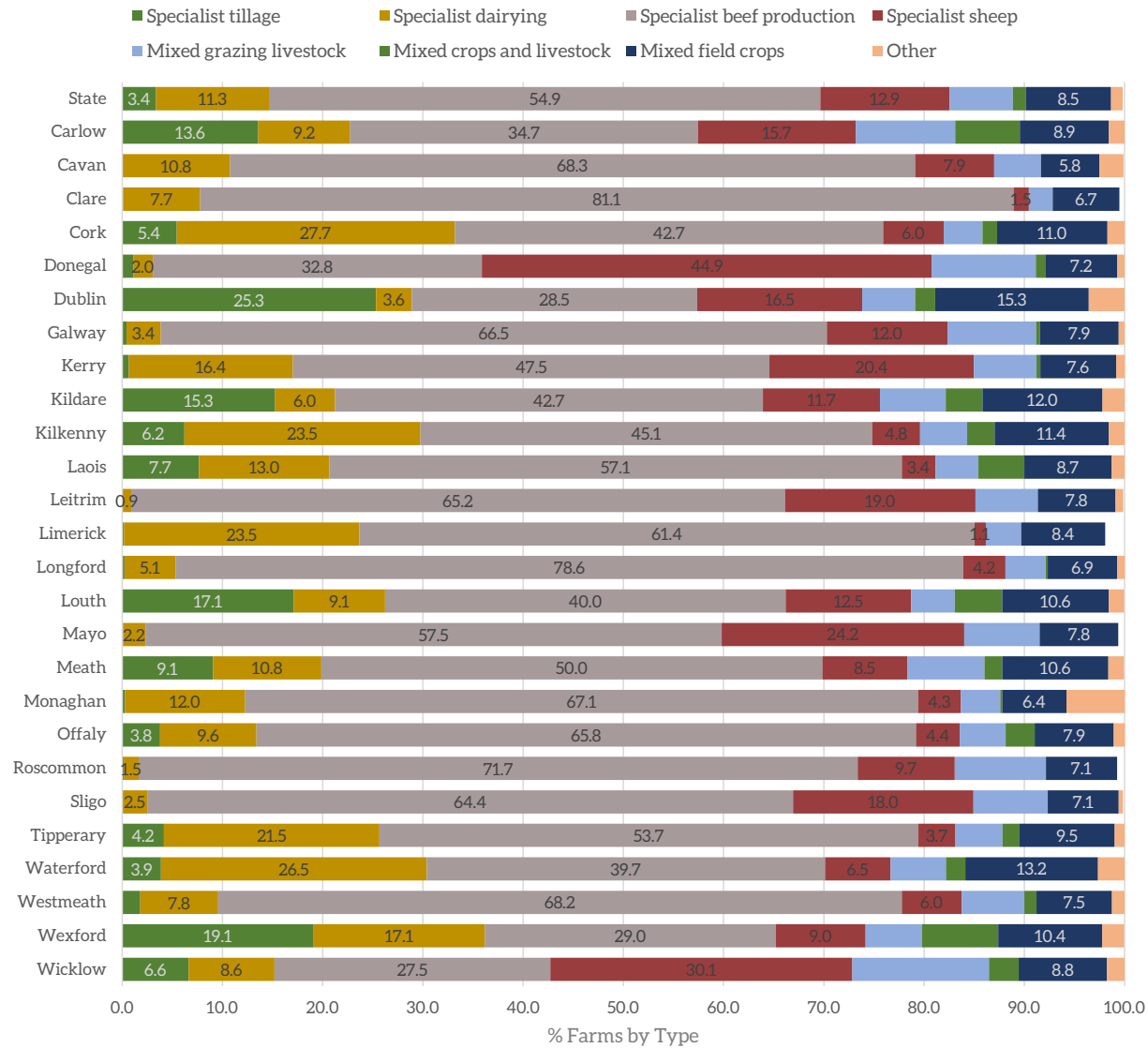


Figure 9.4 - Farm Types by Local Authority, 2020 (Source: CSO)

Agriculture Profile: Land Utilisation - Area Farmed - AAU (ha), 2020

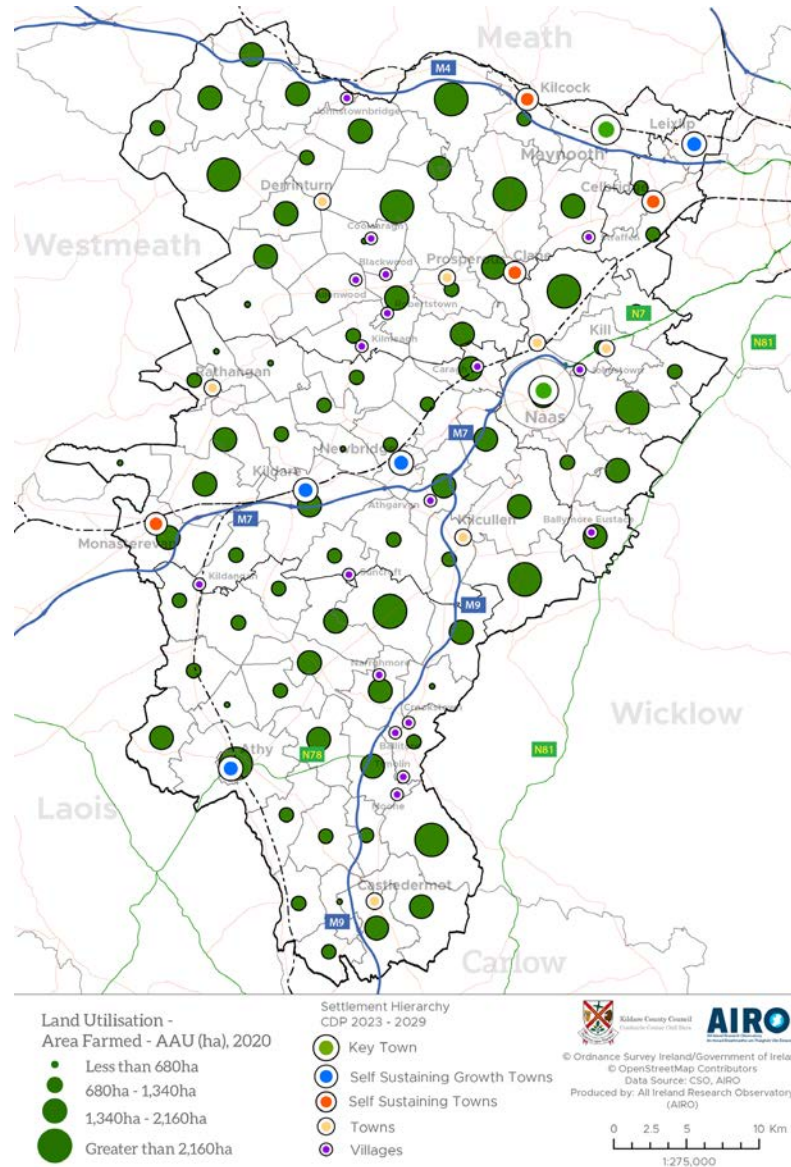


Figure 9.5 - Land Utilisation: Area Farmed - AAU (Ha), 2020 (Source: CSO)

Agriculture Profile: Agricultural Area Utilised: Cereals

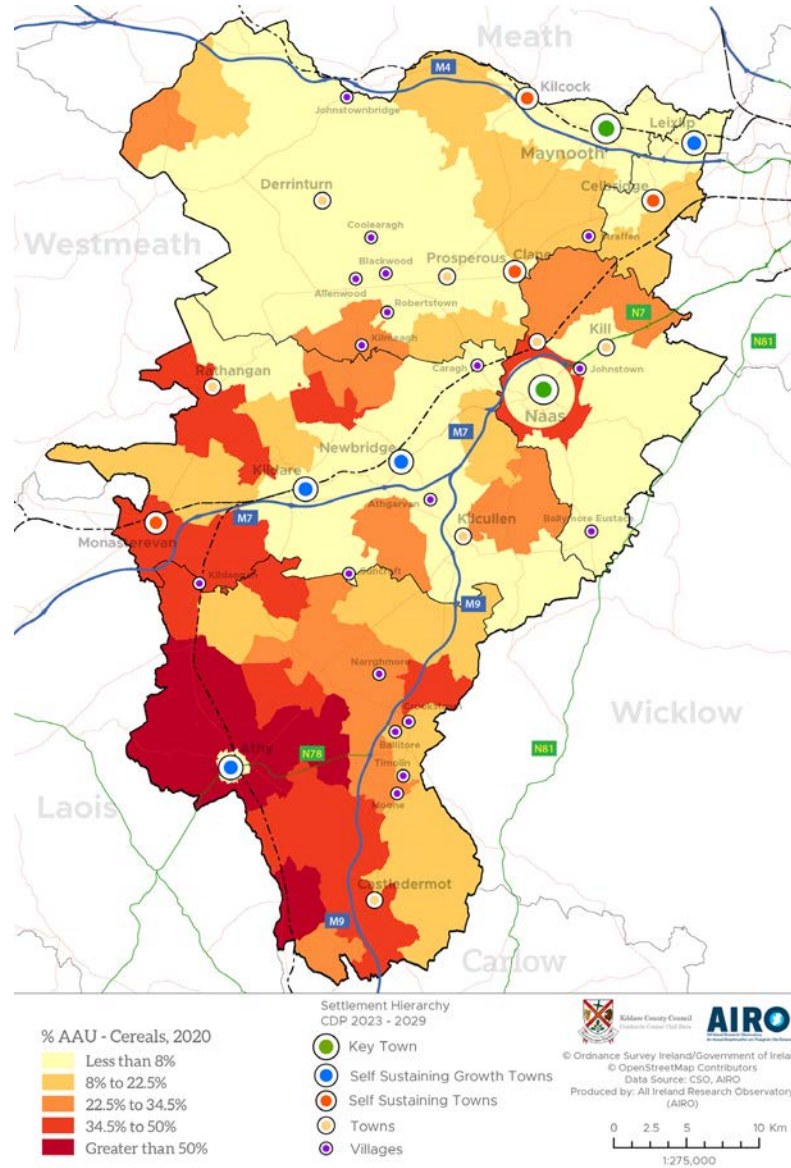


Figure 9.6 - Agricultural Area Utilised: Cereals 2020 (Source: CSO)



Agriculture Profile: Agricultural Area Utilisation: Grassland

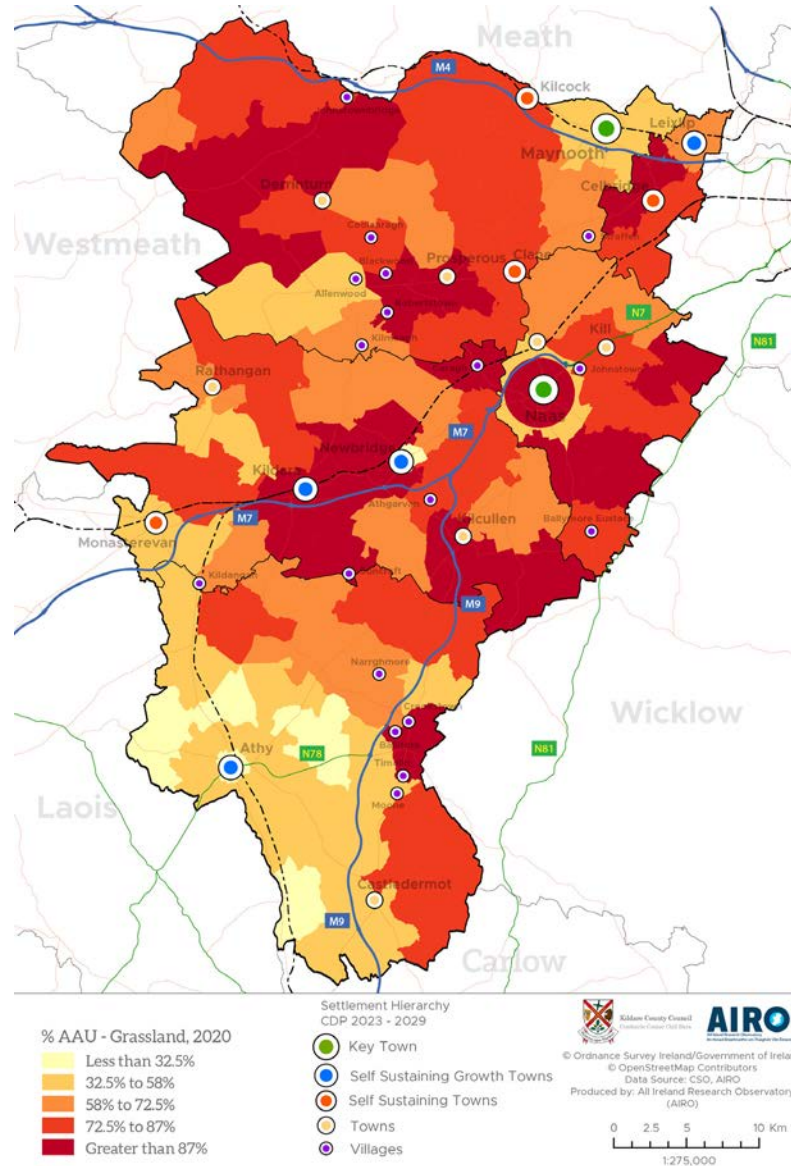


Figure 9.7 - Agricultural Area Utilised: Grassland, 2020 (Source: CSO)

Agriculture Profile: Number of Agricultural Holdings, 2020

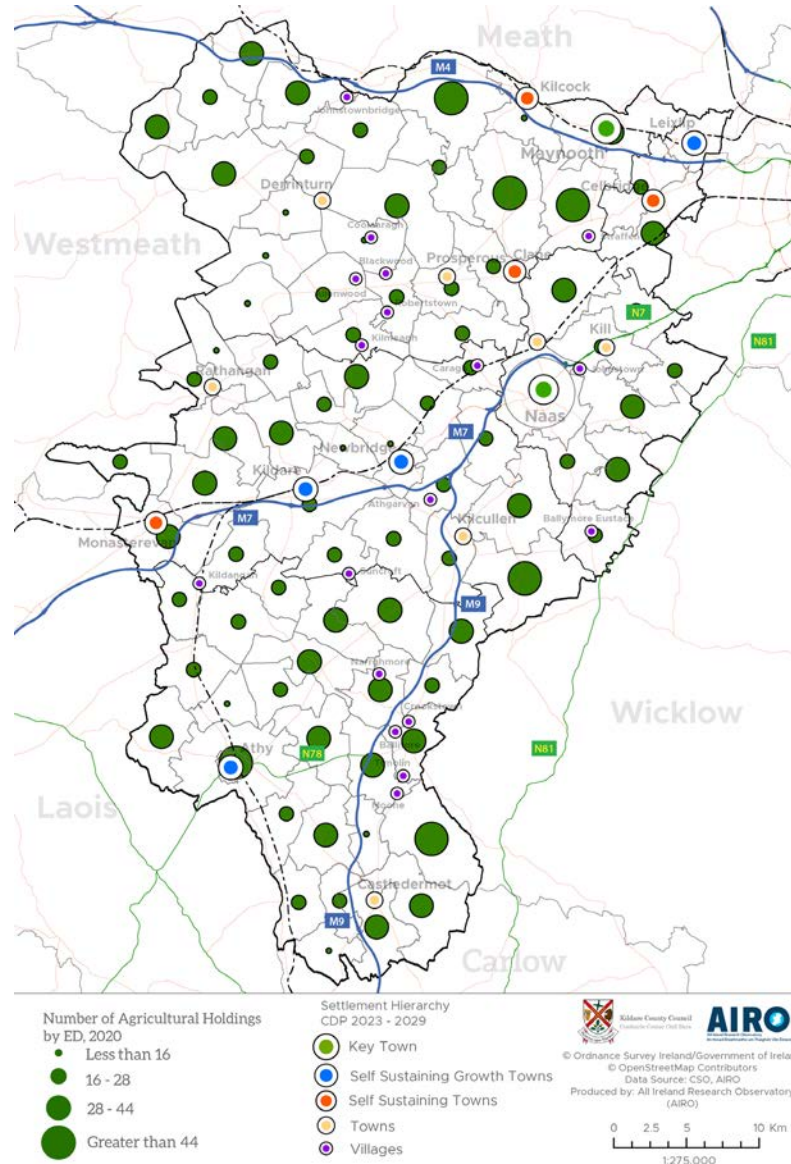


Figure 9.8 - Number of Agricultural Holdings by ED, 2020 (Source: CSO)

Agriculture Profile: Average Agricultural Holding Size (ha), 2020

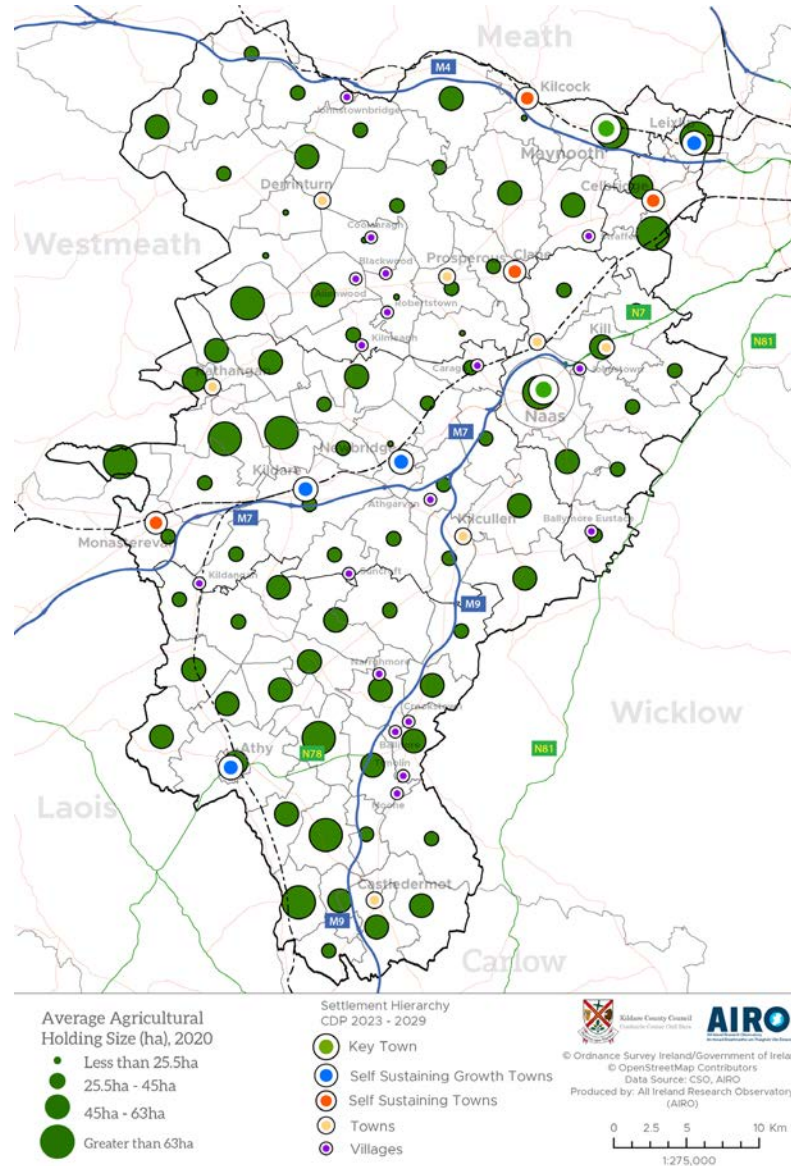


Figure 9.9 - Average Holding Size by ED, 2020 (Source: CSO)











**Comhairle Contae Chill Dara**  
Kildare County Council