

See Figure 4.9.2

Kildare
County Council



National Roads Design Office
Maudlins, Naas, Co. Kildare, Ireland
Tel: +353-45-898199, Fax: +353-45-875845, e-mail: kcc@kildarendo.com

DESMOND PAGE BE, MA, MIEI
Chartered Engineer
DIRECTOR of SERVICES
Transportation & Public Safety

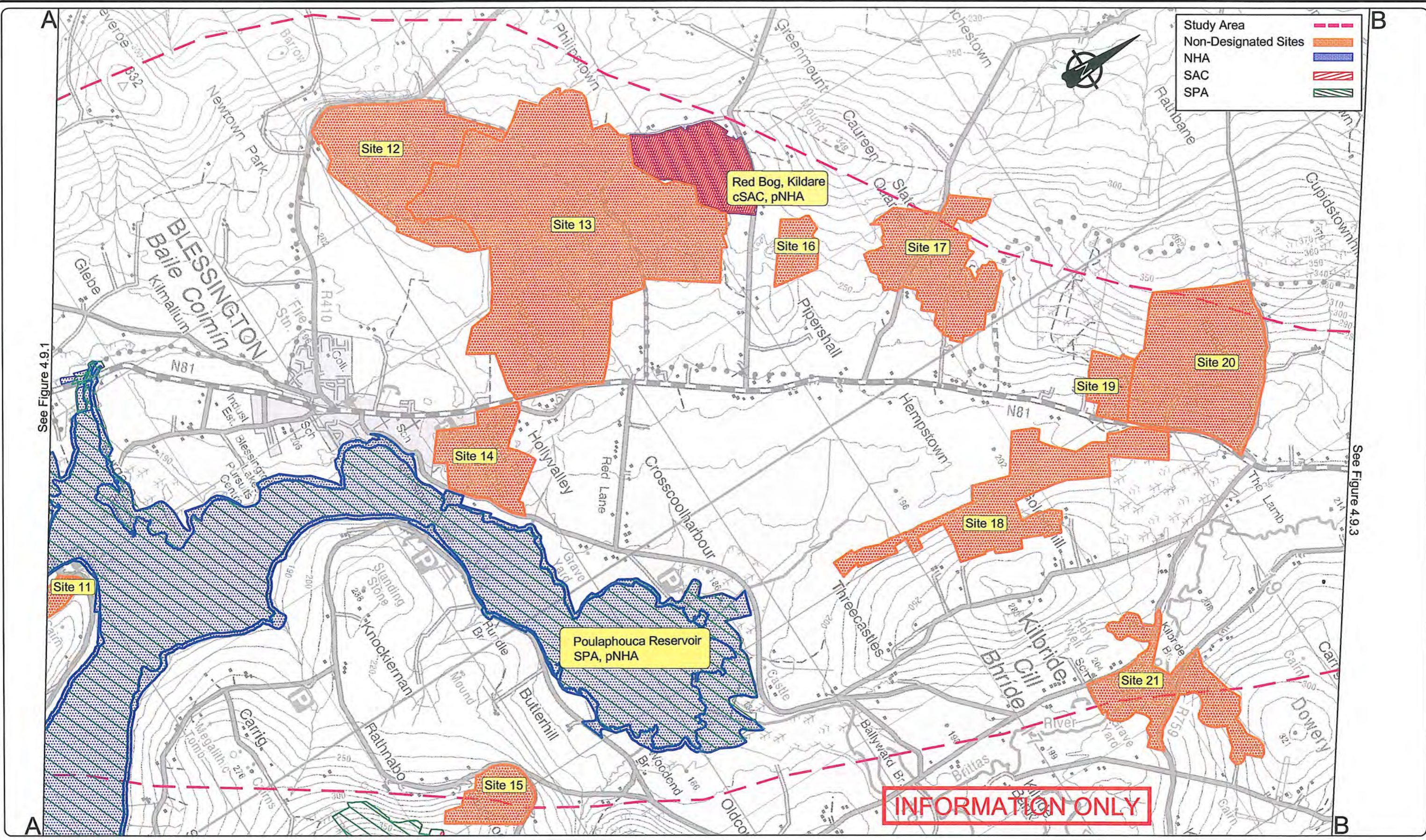
JOHN COPPINGER BE, MIEI
SENIOR ENGINEER

PROJECT **N81 Hollywood Cross to Tallaght Road Improvement Scheme - Constraints Report**

DRAWING **ECOLOGY (Sheet 1 of 3)**

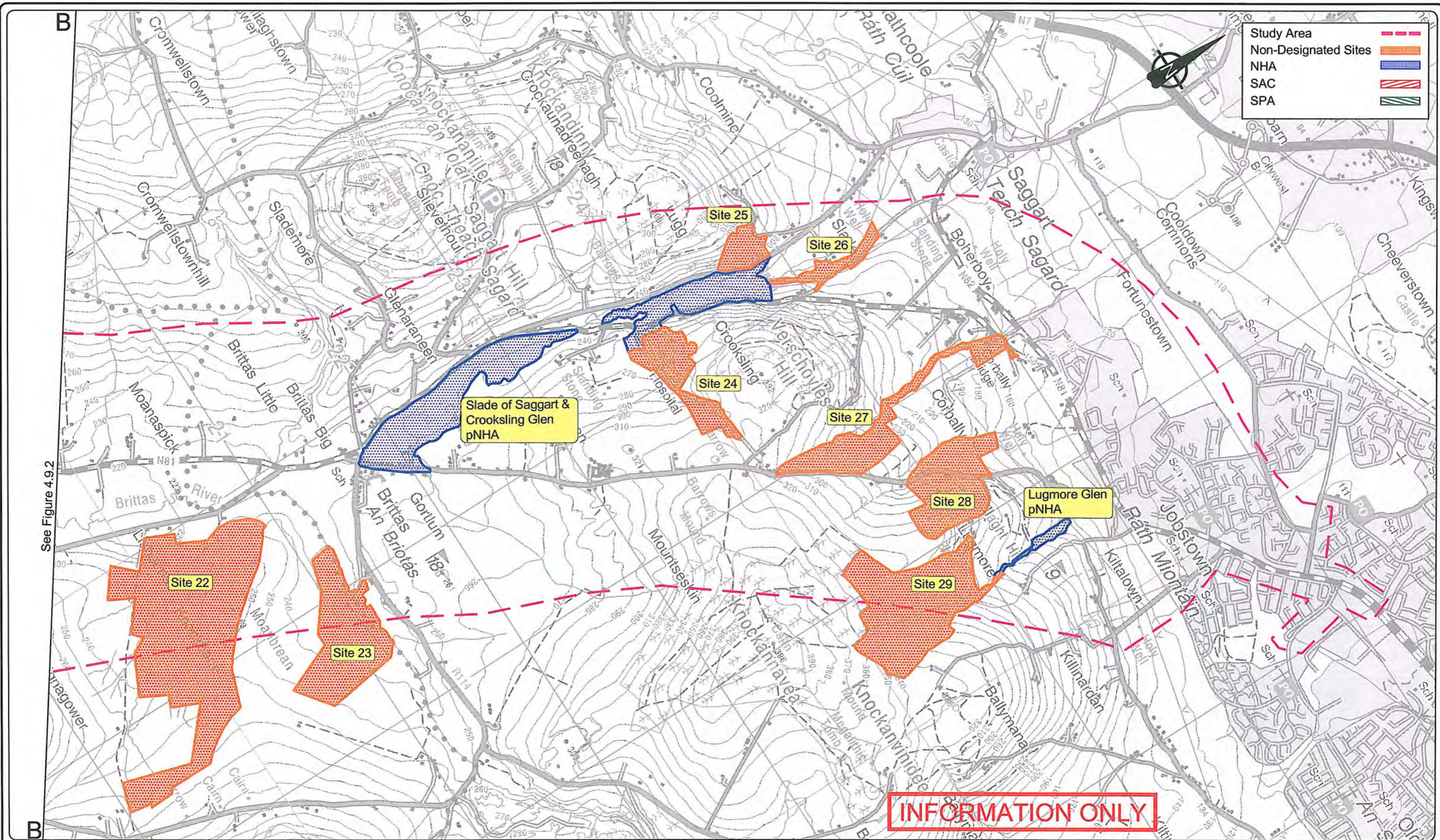
Filename: N:\PROJECTS\NR0159\DRAWINGS\CONSTRAINTSRE Dwg.No. Figure 4.9.1

Scale: 1:25,000 @ A3
Date: Feb.'09
Drawn by: RAC
Checked: WPC
Revision:



See Figure 4.9.1

See Figure 4.9.3



See Figure 4.9.2