

See Figure 4.11.2



National Roads Design Office
 Maudlins, Naas, Co. Kildare, Ireland
 Tel: +353-45-898199, Fax: +353-45-875845, e-mail: kcc@kildarenrdo.com

DESMOND PAGE BE, MA, MIEI
 Chartered Engineer
 DIRECTOR of SERVICES
 Transportation & Public Safety

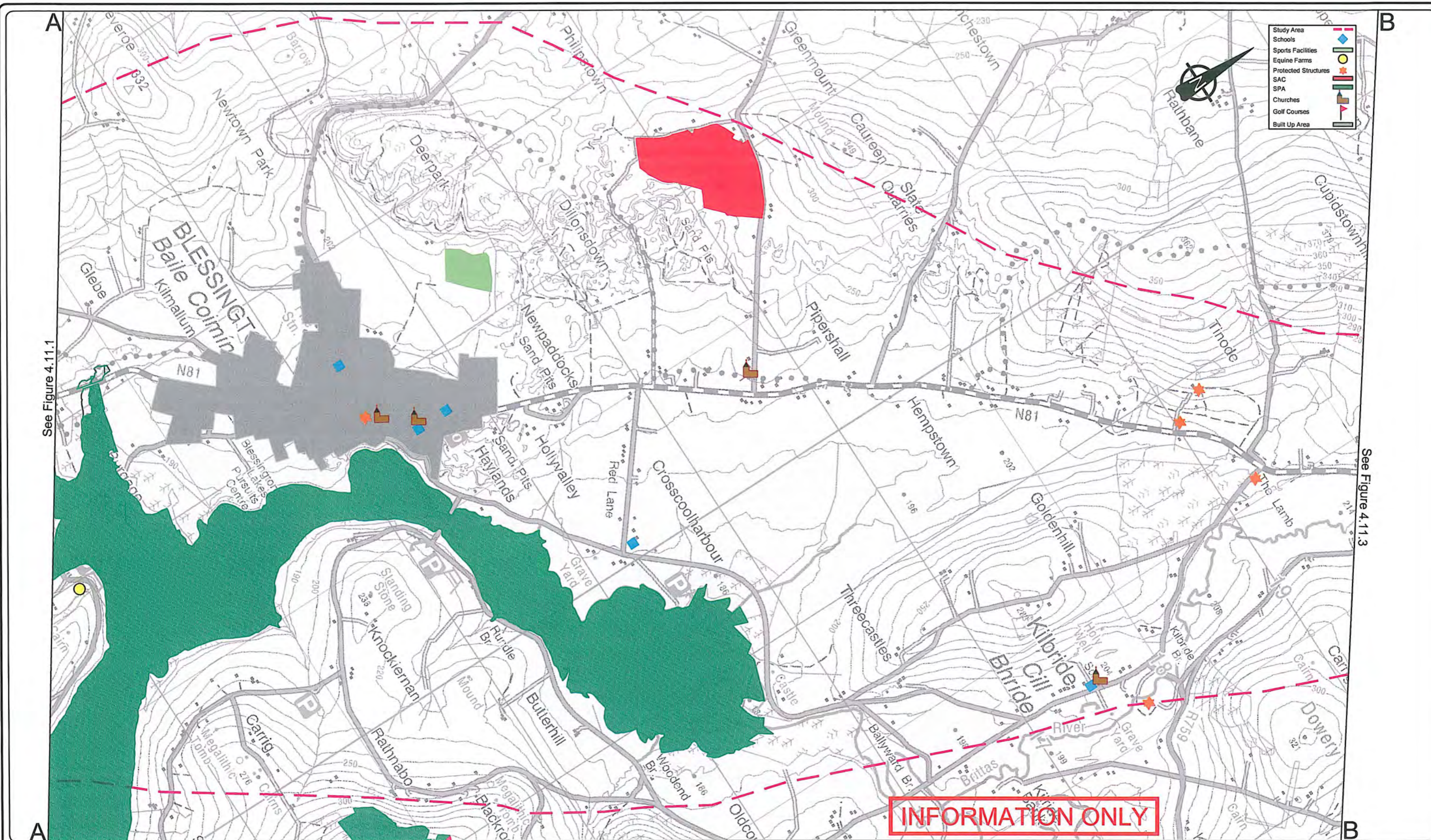
JOHN COPPINGER BE, MIEI
 SENIOR ENGINEER

PROJECT **N81 Hollywood Cross to Tallaght
 Road Improvement Scheme - Constraints Report**

DRAWING **SENSITIVE RECEPTORS (Sheet 1 of 3)**

Filename: N:\PROJECTS\NR0159\DRAWINGS\CONSTRAINTSRE Dwg.No. Figure 4.11.1

Scale: 1:25,000 @ A3
 Date: Feb.'09
 Drawn by: RAC
 Checked: WPC
 Revision:



See Figure 4.11.1

See Figure 4.11.3

INFORMATION ONLY



National Roads Design Office

Maudlins, Naas, Co. Kildare, Ireland
Tel: +353-45-898199, Fax: +353-45-875845, e-mail: kcc@kildarenrdo.com

DESMOND PAGE BE, MA, MIEI
Chartered Engineer
DIRECTOR of SERVICES
Transportation & Public Safety

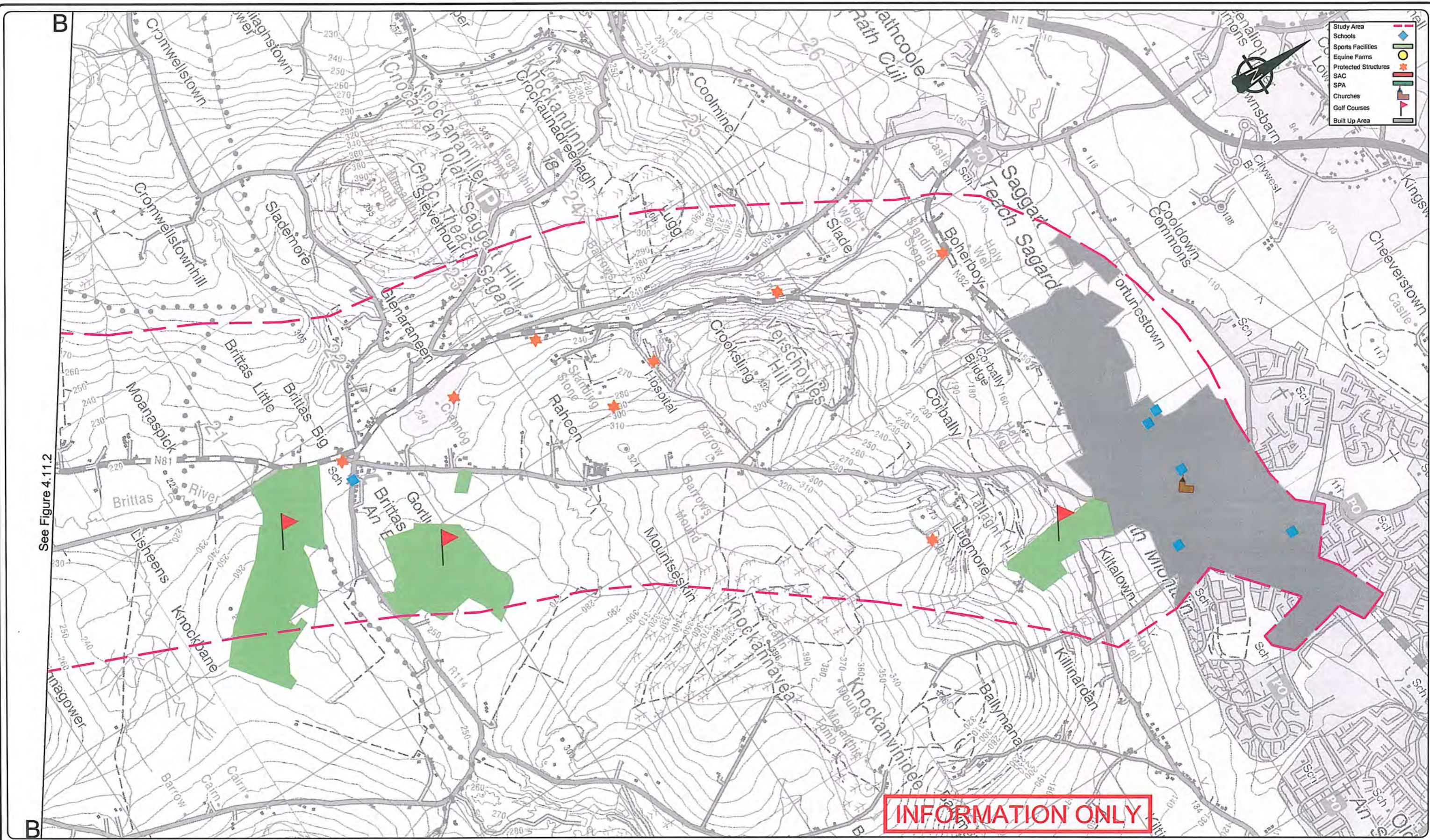
JOHN COPPINGER BE, MIEI
SENIOR ENGINEER

PROJECT **N81 Hollywood Cross to Tallaght
Road Improvement Scheme - Constraints Report**

DRAWING **SENSITIVE RECEPTORS (Sheet 2 of 3)**

Filename: N:\PROJECTS\NR0159\DRAWINGS\CONSTRAINTSRE Dwg.No. Figure 4.11.2

Scale: 1:25,000 @ A3
Date: Feb.'09
Drawn by: RAC
Checked: WPC
Revision:



See Figure 4.11.2



National Roads Design Office

Maudlins, Naas, Co. Kildare, Ireland
 Tel: +353-45-898199, Fax: +353-45-875845, e-mail: kcc@kildarenrdo.com

DESMOND PAGE BE, MA, MIEI
 Chartered Engineer
 DIRECTOR of SERVICES
 Transportation & Public Safety

JOHN COPPINGER BE, MIEI
 SENIOR ENGINEER

PROJECT **N81 Hollywood Cross to Tallaght
 Road Improvement Scheme - Constraints Report**

DRAWING **SENSITIVE RECEPTORS (Sheet 3 of 3)**

Filename: N:\PROJECTS\NR0159\DRAWINGS\CONSTRAINTSRE Dwg.No. Figure 4.11.3

Scale:
 1:25,000 @ A3
 Date: Feb.'09
 Drawn by: RAC
 Checked: WPC
 Revision: