

See Figure 4.12.5



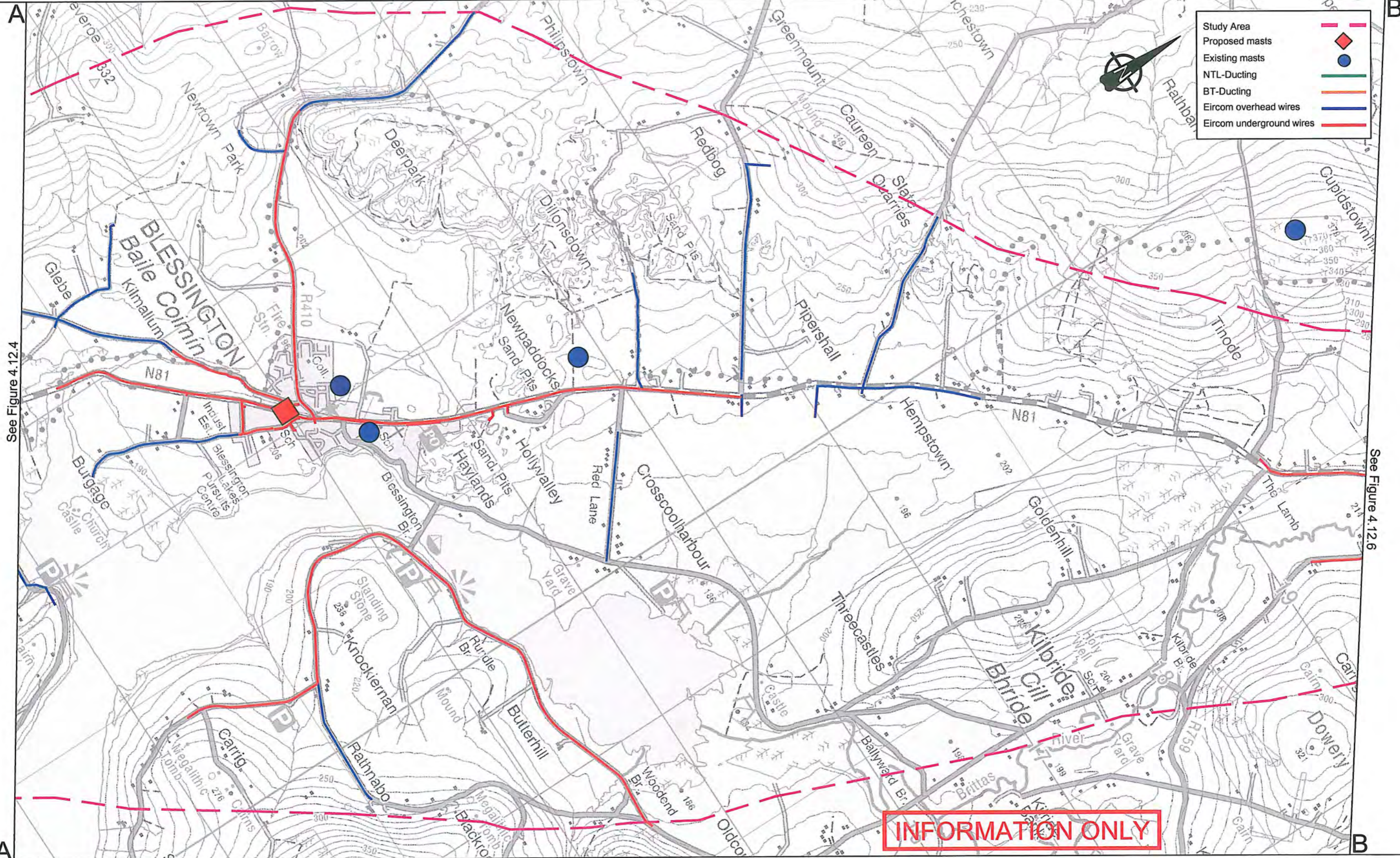
**National Roads Design Office**  
 Maudlins, Naas, Co. Kildare, Ireland  
 Tel: +353-45-898199, Fax: +353-45-875845, e-mail: kcc@kildarendo.com

**DESMOND PAGE BE, MA, MIEI**  
 Chartered Engineer  
 DIRECTOR of SERVICES  
 Transportation & Public Safety

**JOHN COPPINGER BE, MIEI**  
 SENIOR ENGINEER

PROJECT	<b>N81 Hollywood Cross to Tallaght Road Improvement Scheme - Constraints Report</b>
DRAWING	<b>TELECOMMUNICATIONS (Sheet 1 of 3)</b>
Filename:	N:\PROJECTS\NR0159\DRAWINGS\CONSTRAINTSRE
Dwg.No.	Figure 4.12.4

Scale:	1:25,000 @ A3
Date:	Feb.'09
Drawn by:	RAC
Checked:	WPC
Revision:	



See Figure 4.12.4

See Figure 4.12.6



National Roads Design Office

Maudlins, Naas, Co. Kildare, Ireland  
Tel: +353-45-898199, Fax: +353-45-875845, e-mail: kcc@kildarenrdo.com

DESMOND PAGE BE, MA, MIEI  
Chartered Engineer  
DIRECTOR of SERVICES  
Transportation & Public Safety

JOHN COPPINGER BE, MIEI  
SENIOR ENGINEER

PROJECT N81 Hollywood Cross to Tallaght  
Road Improvement Scheme - Constraints Report

DRAWING TELECOMMUNICATIONS (Sheet 2 of 3)

Filename: N:\PROJECTS\NR0159\DRAWINGS\CONSTRAINTSRE Dwg.No. Figure 4.12.5

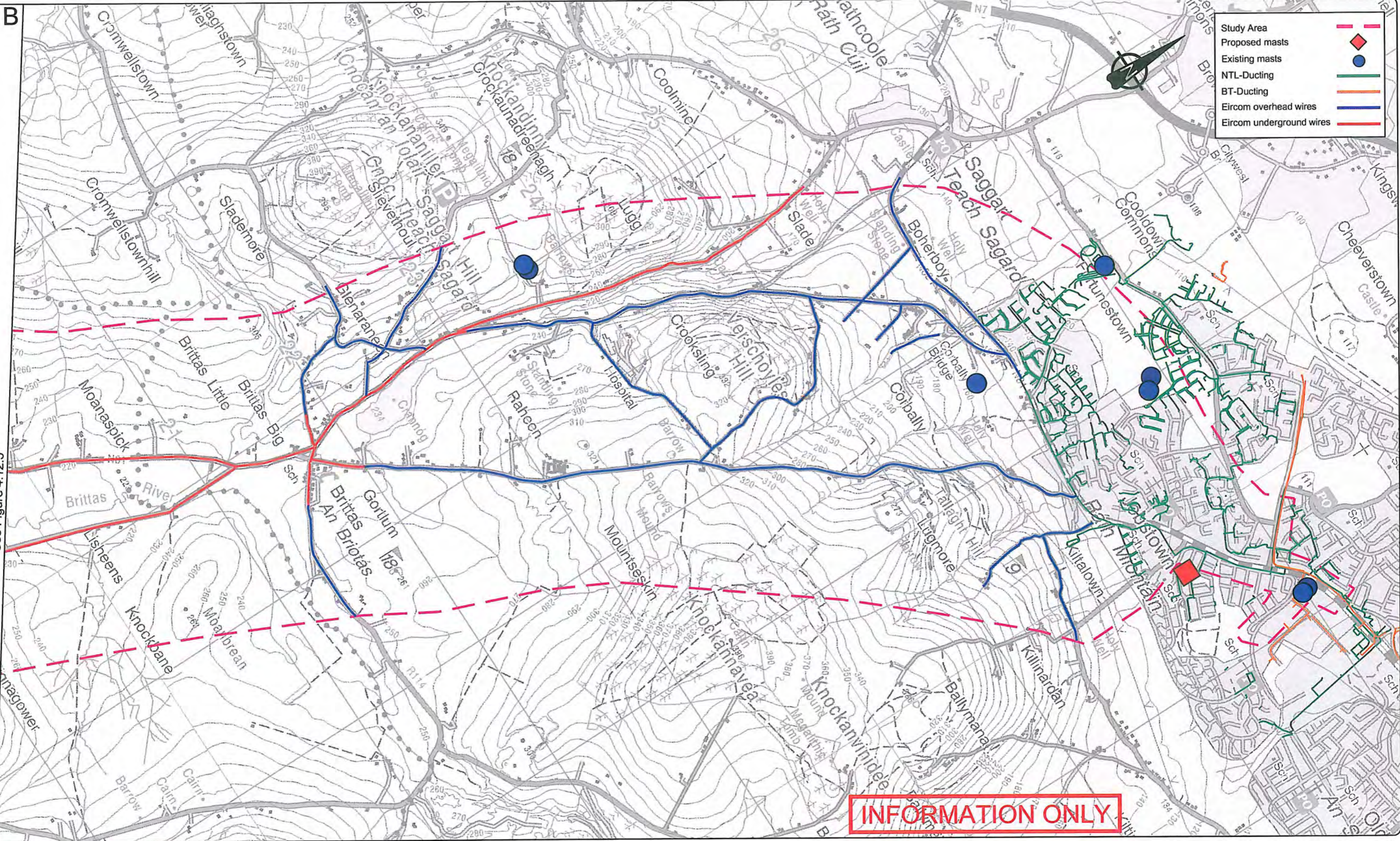
Scale:  
1:25,000 @ A3

Date: Feb.'09

Drawn by:  
RAC

Checked: WPC

Revision:



See Figure 4.12.5



**National Roads Design Office**  
 Maudlins, Naas, Co. Kildare, Ireland  
 Tel: +353-45-898199, Fax: +353-45-875845, e-mail: kcc@kildarenrdo.com

**DESMOND PAGE BE, MA, MIEI**  
 Chartered Engineer  
 DIRECTOR of SERVICES  
 Transportation & Public Safety

**JOHN COPPINGER BE, MIEI**  
 SENIOR ENGINEER

PROJECT	<b>N81 Hollywood Cross to Tallaght Road Improvement Scheme - Constraints Report</b>
DRAWING	<b>TELECOMMUNICATIONS (Sheet 3 of 3)</b>
Filename:	N:\PROJECTS\NR0159\DRAWINGS\CONSTRAINTSRE
Dwg.No.	Figure 4.12.6

Scale:	1:25,000 @ A3
Date:	Feb.'09
Drawn by:	RAC
Checked:	WPC
Revision:	