

Study Area	
AG-Aghfarrell Formation	GD-Glen Ding Formation
AGdh-Dowery Hill Member	NI1-Type 1 Granordiorite
ApI-Aplite	NI2e-Type 2e Equigranular
BZ-Butter Mountain Formation	NI2p-Type 2p Microcline Porphyritic
CP-Clap	NI3-Type 3 Muscovite Porphyritic
CZ-Carrigill Formation	PO-Pollaphuca Formation
D-Dolerite	SQ-Slate Quarries Formation
Bedrock Lines	TK-Tipperkevin Formation

See Figure 4.10.2

INFORMATION ONLY



National Roads Design Office

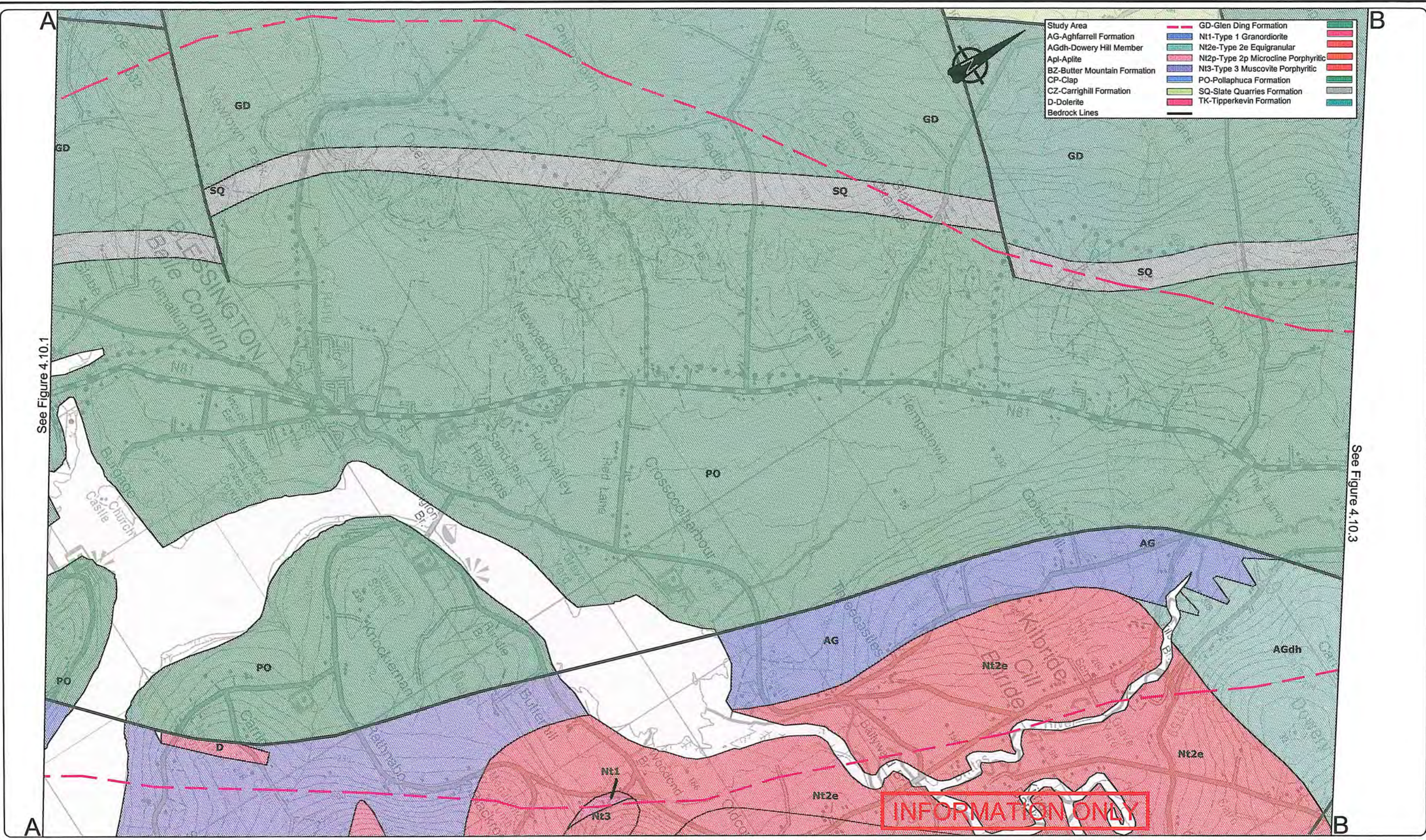
Maudlins, Naas, Co. Kildare, Ireland
Tel: +353-45-898199, Fax: +353-45-875845, e-mail: kcc@kildarenrdo.com

DESMOND PAGE BE, MA, MIEI
Chartered Engineer
DIRECTOR of SERVICES
Transportation & Public Safety

JOHN COPPINGER BE, MIEI
SENIOR ENGINEER

PROJECT	N81 Hollywood Cross to Tallaght Road Improvement Scheme - Constraints Report
DRAWING	BEDROCK GEOLOGY (Sheet 1 of 3)
Filename:	N:\PROJECTS\NR0159\DRAWINGS\CONSTRAINTSRE
Dwg.No.	Figure 4.10.1

Scale:	1:25,000 @ A3
Date:	Feb.'09
Drawn by:	RAC
Checked:	WPC
Revision:	



Study Area	GD-Glen Ding Formation	
AG-Aghfarrell Formation	Nt1-Type 1 Granodiorite	
AGdh-Dowery Hill Member	Nt2e-Type 2e Equigranular	
Apl-Aplite	Nt2p-Type 2p Microcline Porphyritic	
BZ-Butter Mountain Formation	Nt3-Type 3 Muscovite Porphyritic	
CP-Clap	PO-Pollaphuca Formation	
CZ-Carrighill Formation	SQ-Slate Quarries Formation	
D-Dolerite	TK-Tipperkevin Formation	
Bedrock Lines		

See Figure 4.10.1

See Figure 4.10.3

INFORMATION ONLY

Kildare
County Council



National Roads Design Office
Maudlins, Naas, Co. Kildare, Ireland
Tel: +353-45-898199, Fax: +353-45-875845, e-mail: kcc@kildarendo.com

DESMOND PAGE BE, MA, MIEI
Chartered Engineer
DIRECTOR of SERVICES
Transportation & Public Safety

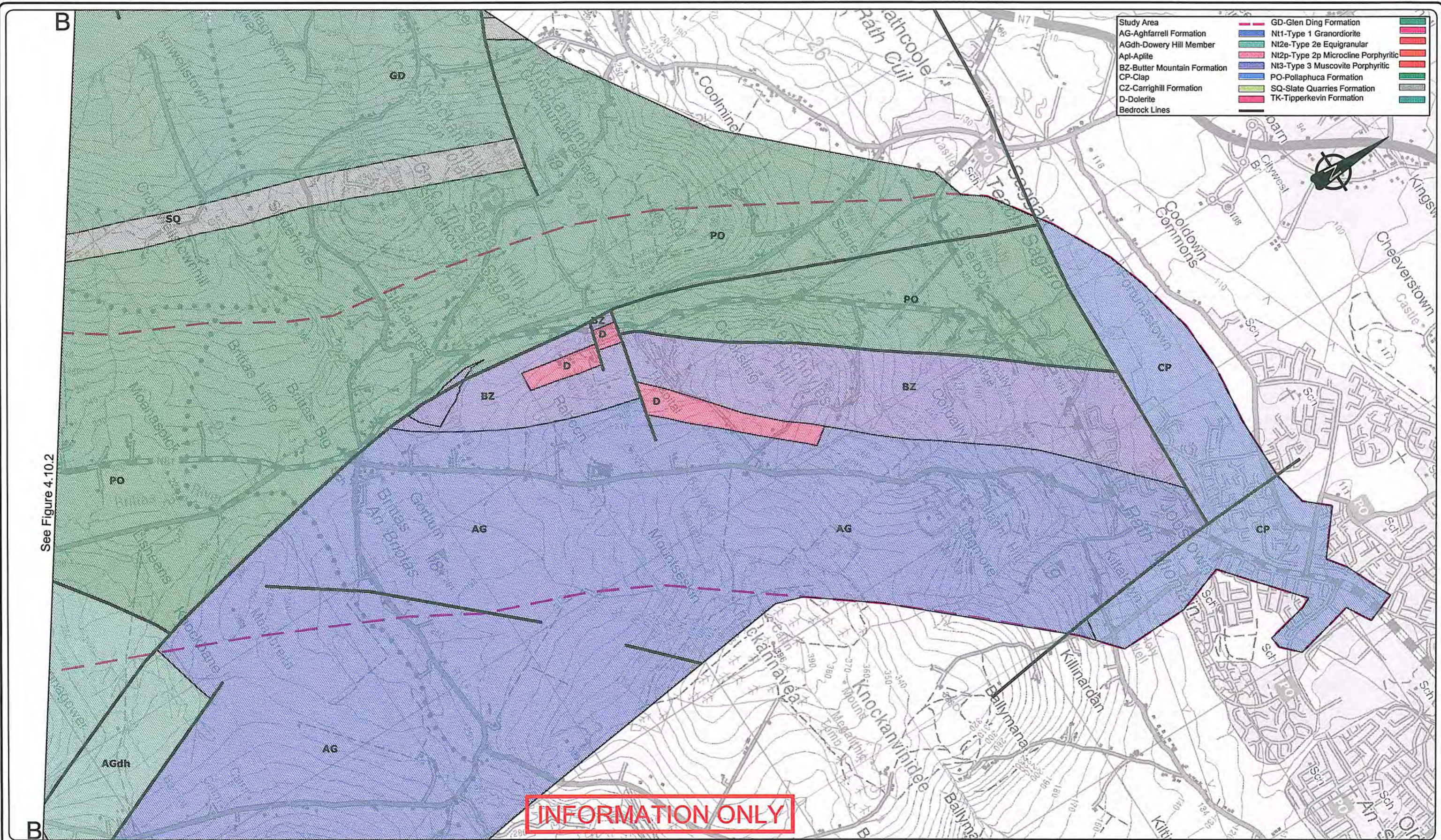
JOHN COPPINGER BE, MIEI
SENIOR ENGINEER

PROJECT **N81 Hollywood Cross to Tallaght Road Improvement Scheme - Constraints Report**

DRAWING **BEDROCK GEOLOGY (Sheet 2 of 3)**

Filename: N:\PROJECTS\NR0159\DRAWINGS\CONSTRAINTSRE Dwg.No. Figure 4.10.2

Scale:	1:25,000 @ A3
Date:	Feb.'09
Drawn by:	RAC
Checked:	WPC
Revision:	



National Roads Design Office

Maudlins, Naas, Co. Kildare, Ireland
Tel: +353-45-898199, Fax: +353-45-875845, e-mail: kcc@kildarenrdo.com

DESMOND PAGE BE, MA, MIEI
Chartered Engineer
DIRECTOR of SERVICES
Transportation & Public Safety

JOHN COPPINGER BE, MIEI
SENIOR ENGINEER

PROJECT **N81 Hollywood Cross to Tallaght
Road Improvement Scheme - Constraints Report**

DRAWING **BEDROCK GEOLOGY (Sheet 3 of 3)**

Filename: N:\PROJECTS\NR0159\DRAWINGS\CONSTRAINTSRE Dwg.No. Figure 4.10.3

Scale:
1:25,000 @ A3

Date: Feb.'09

Drawn by:
RAC

Checked:
WPC

Revision: