

A

See Figure 4.10.5

A



National Roads Design Office

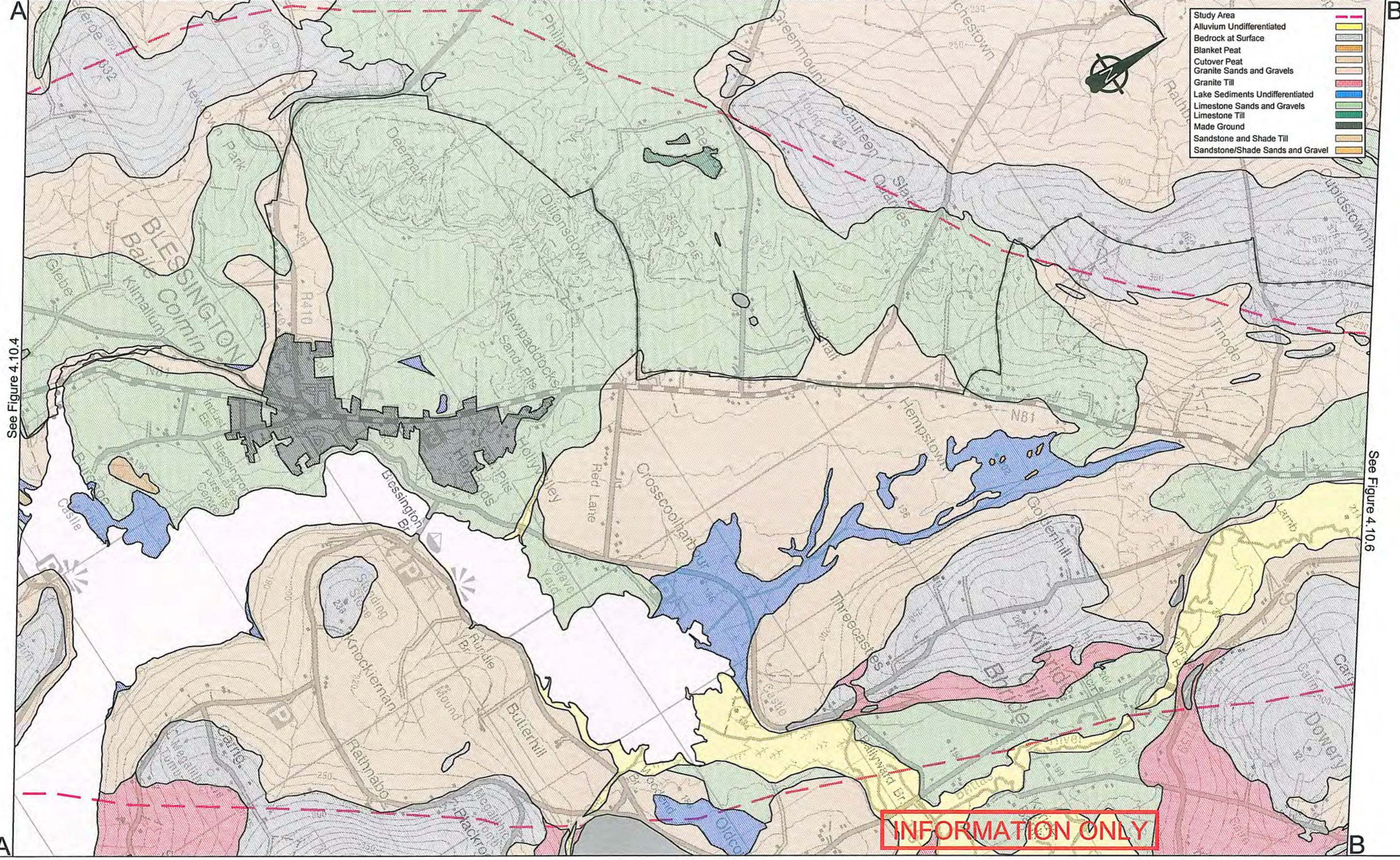
Maudlins, Naas, Co. Kildare, Ireland
 Tel: +353-45-898199, Fax: +353-45-875845, e-mail: kcc@kildarendo.com

DESMOND PAGE BE, MA, MIEI
 Chartered Engineer
 DIRECTOR of SERVICES
 Transportation & Public Safety

JOHN COPPINGER BE, MIEI
 SENIOR ENGINEER

PROJECT	N81 Hollywood Cross to Tallaght Road Improvement Scheme - Constraints Report
DRAWING	SUPERFICIAL DEPOSITS (Sheet 1 of 3)
Filename:	N:\PROJECTS\NR0159\DRAWINGS\CONSTRAINTSRE
Dwg.No.	Figure 4.10.4

Scale:	1:25,000 @ A3
Date:	Feb.'09
Drawn by:	RAC
Checked:	WPC
Revision:	



See Figure 4.10.4

See Figure 4.10.6

Kildare
County Council



National Roads Design Office
Maulins, Naas, Co. Kildare, Ireland
Tel: +353-45-898199, Fax: +353-45-875845, e-mail: kcc@kildarendo.com

DESMOND PAGE BE, MA, MIEI
Chartered Engineer
DIRECTOR of SERVICES
Transportation & Public Safety

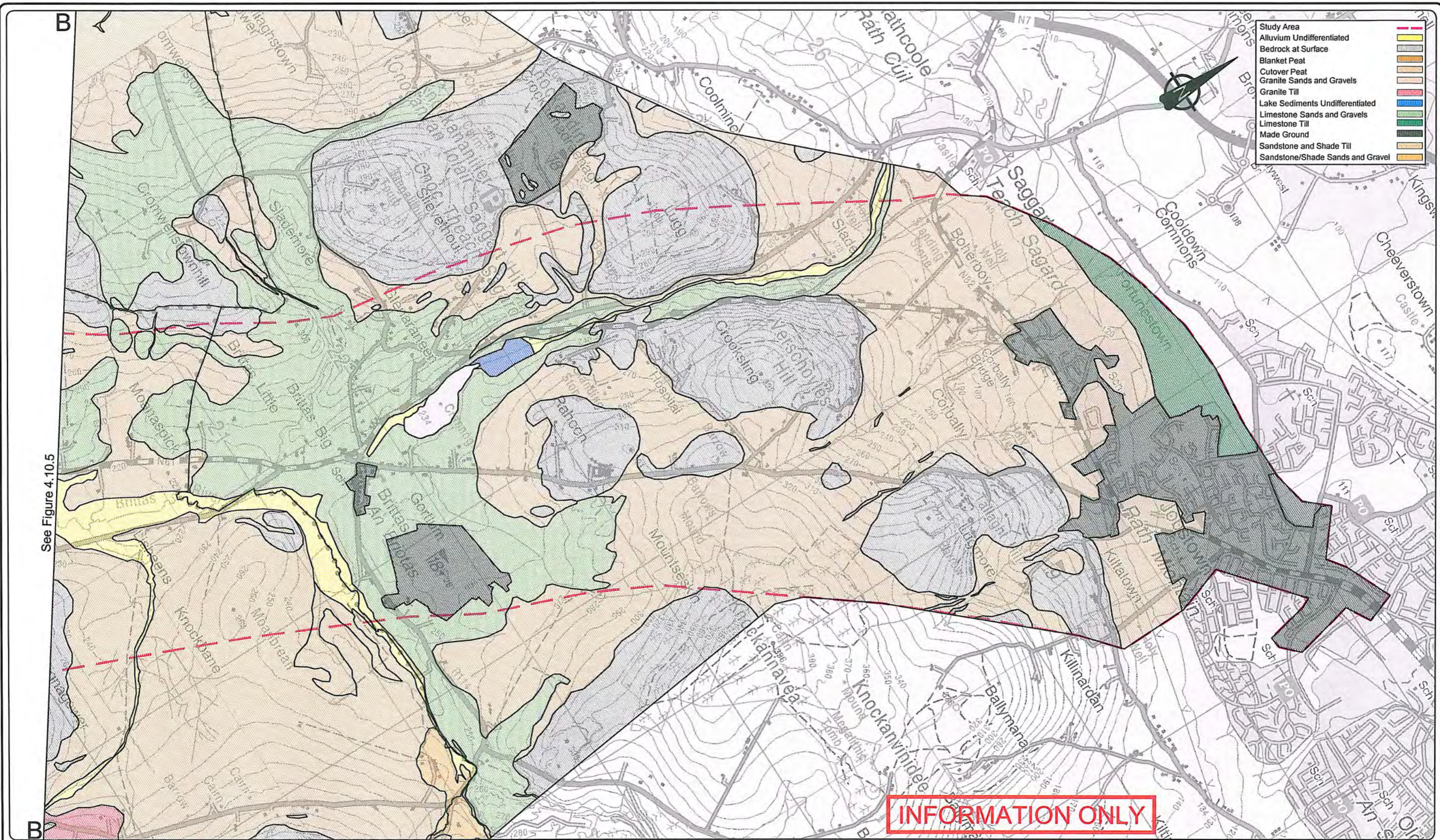
JOHN COPPINGER BE, MIEI
SENIOR ENGINEER

PROJECT **N81 Hollywood Cross to Tallaght Road Improvement Scheme - Constraints Report**

DRAWING **SUPERFICIAL DEPOSITS (Sheet 2 of 3)**

Filename: N:\PROJECTS\NR0159\DRAWINGS\CONSTRAINTSRE Dwg.No. Figure 4.10.5

Scale: 1:25,000 @ A3
Date: Feb.'09
Drawn by: RAC
Checked: WPC
Revision:



See Figure 4.10.5



National Roads Design Office

Maudlins, Naas, Co. Kildare, Ireland
Tel: +353-45-898199, Fax: +353-45-875845, e-mail: kcc@kildarenrdo.com

DESMOND PAGE BE, MA, MIEI
Chartered Engineer
DIRECTOR of SERVICES
Transportation & Public Safety

JOHN COPPINGER BE, MIEI
SENIOR ENGINEER

PROJECT N81 Hollywood Cross to Tallaght
Road Improvement Scheme - Constraints Report

DRAWING SUPERFICIAL DEPOSITS (Sheet 3 of 3)

Filename: N:\PROJECTS\NR0159\DRAWINGS\CONSTRAINTSRE

Dwg.No. Figure 4.10.6

Scale: 1:25,000 @ A3
Date: Feb.'09
Drawn by: RAC
Checked: WPC
Revision: