

See Figure 4.10.8

A

A



National Roads Design Office

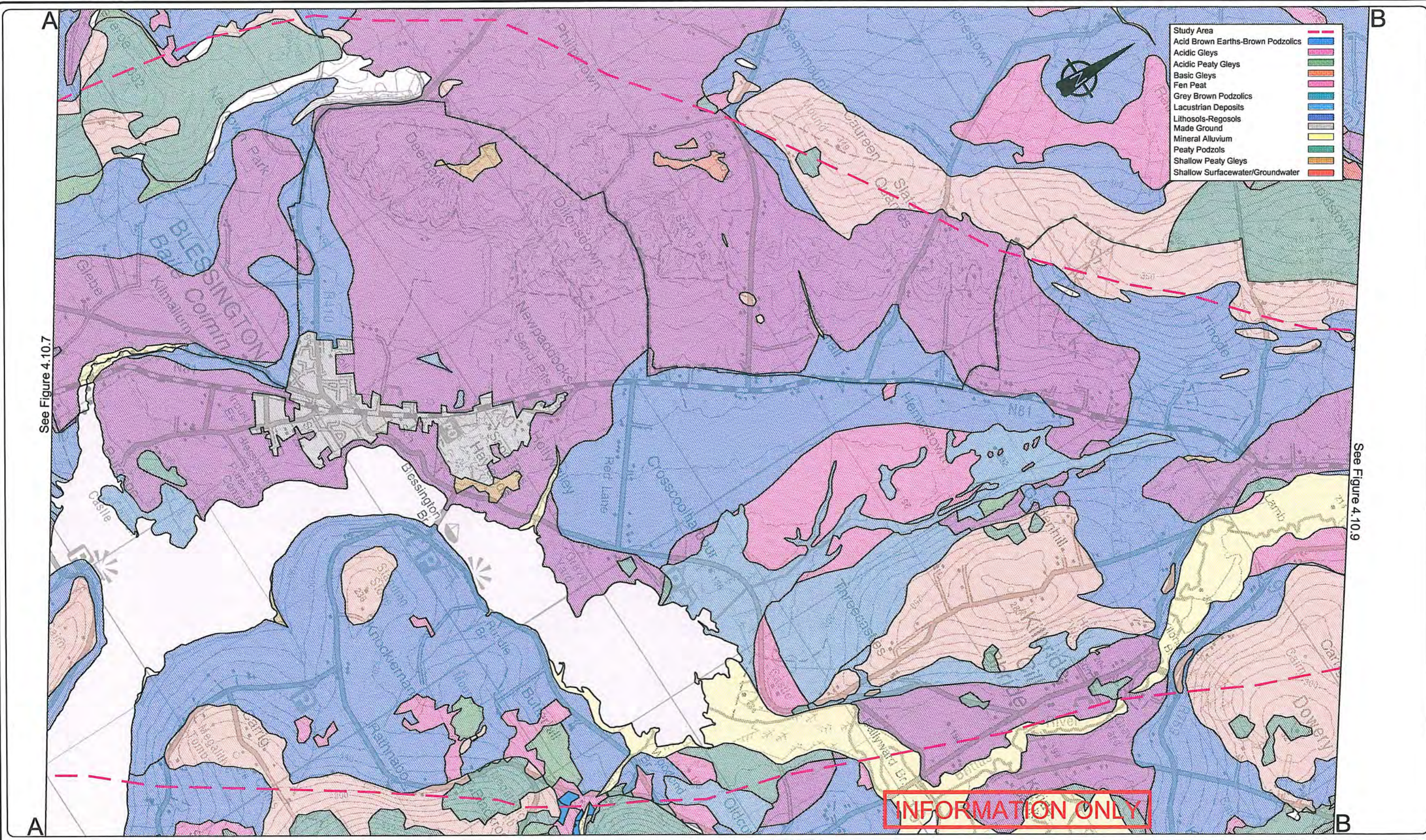
Maudlins, Naas, Co. Kildare, Ireland
Tel: +353-45-898199, Fax: +353-45-875845, e-mail: kcc@kildarenrdo.com

DESMOND PAGE BE, MA, MIEI
Chartered Engineer
DIRECTOR of SERVICES
Transportation & Public Safety

JOHN COPPINGER BE, MIEI
SENIOR ENGINEER

PROJECT	N81 Hollywood Cross to Tallaght Road Improvement Scheme - Constraints Report
DRAWING	AGRICULTURAL SOILS (Sheet 1 of 3)
Filename:	N:\PROJECTS\NR0159\DRAWINGS\CONSTRAINTSRE
Dwg.No.	Figure 4.10.7

Scale:	1:25,000 @ A3
Date:	Feb.'09
Drawn by:	RAC
Checked:	WPC
Revision:	

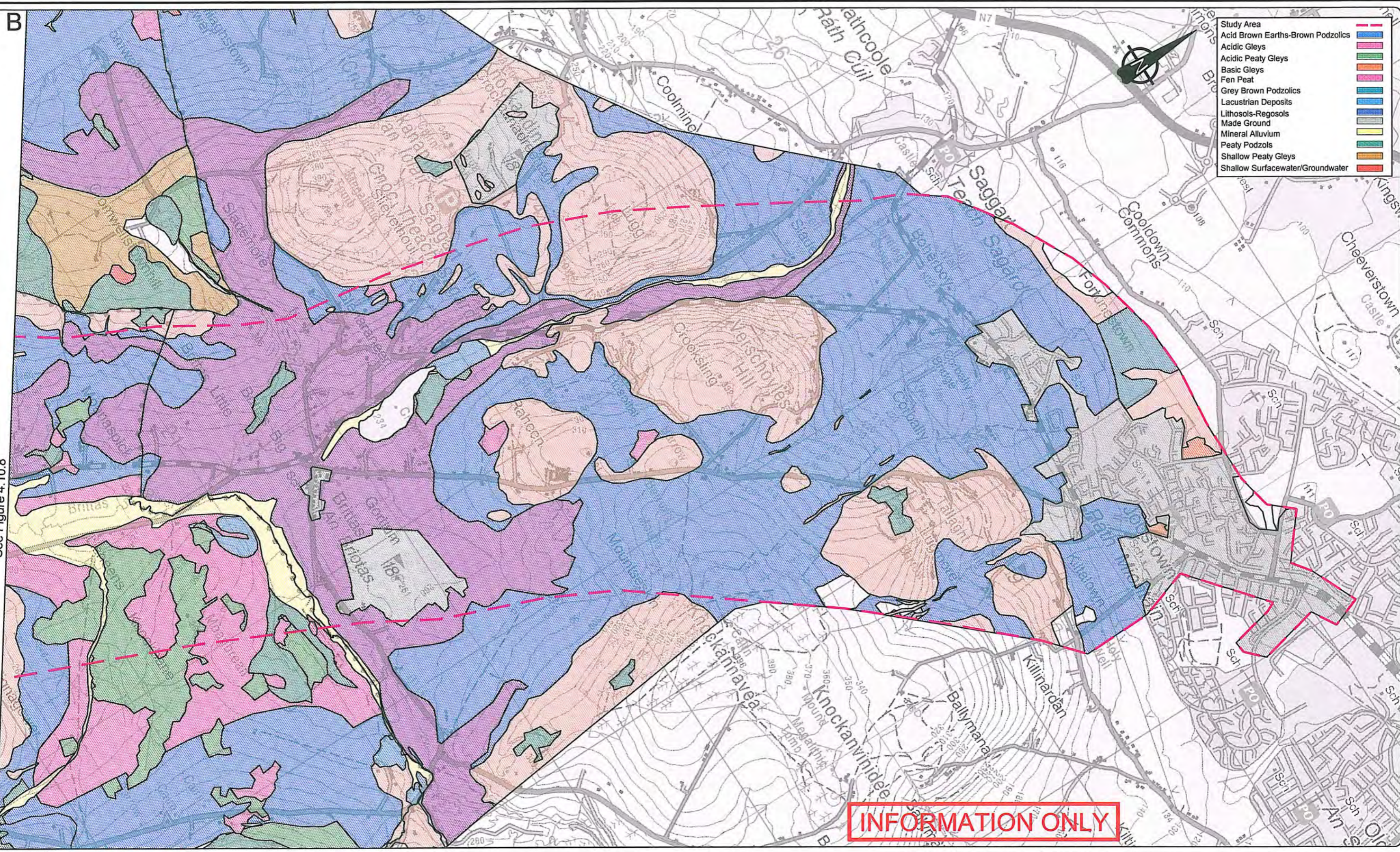


B

See Figure 4.10.8

B

- Study Area
- Acid Brown Earths-Brown Podzolics
- Acidic Gleys
- Acidic Peaty Gleys
- Basic Gleys
- Fen Peat
- Grey Brown Podzolics
- Lacustrine Deposits
- Lithosols-Regosols
- Made Ground
- Mineral Alluvium
- Peaty Podzols
- Shallow Peaty Gleys
- Shallow Surfacewater/Groundwater



National Roads Design Office
 Maudlins, Naas, Co. Kildare, Ireland
 Tel: +353-45-898199, Fax: +353-45-875845, e-mail: kcc@kildarendo.com

DESMOND PAGE BE, MA, MIE
 Chartered Engineer
 DIRECTOR of SERVICES
 Transportation & Public Safety

JOHN COPPINGER BE, MIE
 SENIOR ENGINEER

PROJECT **N81 Hollywood Cross to Tallaght Road Improvement Scheme - Constraints Report**

DRAWING **AGRICULTURAL SOILS (Sheet 3 of 3)**

Filename: N:\PROJECTS\NR0159\DRAWINGS\CONSTRAINTSRE Dwg.No. Figure 4.10.9

Scale: 1:25,000 @ A3
 Date: Feb.'09
 Drawn by: RAC
 Checked: WPC
 Revision: