

20

Chapter 20 Architectural Heritage



20 Architectural Heritage

20.1 Background

County Kildare, located in the heart of Leinster, contains a wealth of archaeological and architectural heritage that can be found in both urban and rural settings. There is evidence of settlement in County Kildare from the late Neolithic period and each stage of growth within the county has left a unique imprint on the built form and heritage. Much of the development in the county has its roots in the eighteenth and nineteenth centuries. During this time landlords planned urban settlements while concurrently building fine country houses such as Castletown House and Carton Demesne and religious communities expanded towns such as Ballitore, based on existing street patterns. Industrial heritage plays a very important role in the county with canals, distilleries and forges making a strong contribution to the character of places. Vernacular structures, such as thatched cottages and farmhouses, reflect how the majority of the population lived, and they form an integral part of the character of County Kildare. Extensive architectural developments took place during the twentieth century and fine examples of Edwardian architecture survive, along with prolific works of the Board of Works and local authority housing provisions.

County Kildare boasts a rich architectural heritage comprising a number of country houses and demesnes, planned towns, vernacular structures, industrial heritage, vernacular architecture, ecclesiastical architecture, and a wealth of non-structural items including stone walls and street furniture. The built environment is an intrinsic part of our heritage and it provides our society with an opportunity to learn about the past and understand the present.

20.2 Goal

To protect our architectural heritage and to encourage sensitive sustainable development so as to ensure its survival and maintenance for the future.

20.3 Context

The unprecedented level of development over recent years has brought many changes to the built environment and architectural conservation has become an increasingly important element of planning. The Convention for the Protection of the Architectural Heritage of Europe (The Granada Convention), drawn up by the Council of Europe and signed at Granada in 1985, was ratified by Ireland in 1997. As a result, comprehensive and systematic legislative provisions for protection of the architectural heritage were introduced by the Government as part of the Planning Code, with the implementation of the Local Government (Planning and Development) Act, 2000-2004.

This Act is consolidated into Part IV of the Planning and Development Act, 2000-2004, and it is now a mandatory requirement of the Development Plan to include a Record of Protected Structures (RPS). The RPS replaces the system of 'listed buildings' in previous County Development Plans.

20.3.1 Protected Structures

In relation to a protected structure or proposed protected structure, the meaning of the term structure includes the interior of the structure, the land lying within the curtilage of the structure, any other structure lying within the curtilage and their interior, all fixtures and fittings and features which form part of the interior or exterior of that structure. The protection also extends to any features specified as being in the attendant grounds.

20.3.2 Purpose of Designation

The effect of protected structure status is to ensure that any changes or alterations to the character of a structure are carried out in such a way that the existing character is retained and enhanced. Therefore, works which would, in the opinion of the Council, have material effect on the character of the structure, require planning permission.

20.3.3 Section 57 Declarations

It is important to note that not all works to a Protected Structure will constitute material alterations. Under Section 57 of the Planning and Development Act, 2000 owners and occupiers may request a declaration from the Planning Authority as to the type of works, which it considers, would or would not materially affect the character of the structure.



20.4 Objectives

20.4.1 Record of Protected Structures

- (1) The Council will compile and maintain a Record of Protected Structures and will include in the Record every structure or parts of such structures which, in the Planning Authority's opinion, is of special architectural, historical, archaeological, artistic, cultural, scientific, social or technical interest.

Protected Structures are shown on the Development Plan maps 20.3 and listed in table 20.1 of this written statement.

- (2) In the light of the publication of the National Inventory of Architectural Heritage (NIAH) and other relevant surveys additions will be made to the RPS in a phased basis.

20.4.2 Curtilage and Attendant Grounds of Protected Structures

- (3) County Kildare boasts a large number of Country Houses and Demesnes where the grounds and settings constitute an intrinsic element of their character. The County has seen an unprecedented demand for housing in recent years which has put increasing pressure on land for development. Any piecemeal development of demesnes can be detrimental to the historical and architectural importance of a structure. It is an objective of the Council to prohibit development in gardens or landscapes which are deemed to be an important part of the setting of a Protected Structure or where they contribute to the character of an Architectural Conservation Area.

20.4.3 Views Within the Curtilage of a Protected Structure

- (4) It is an objective of the Council to safeguard the amenities of Castletown and Donaghcumper and environs as shown on Map 20.1. This includes the main avenue and the axial views between Castletown House and Conolly's Folly, and between Castletown House and the Wonderful Barn, Leixlip, the views from the House to the river and across the back parterre and from the main avenue to the river towards Castletown, and up and down the river to Celbridge and New Bridges respectively.

It is also an objective of the Council to preserve the views to and from Carton House within the Demesne walls, as outlined in Map 20.2.

- (5) It is the objective of the Council to prepare a Local Area Plan for Castletown Demesne and in conjunction with relevant bodies to protect the views as outlined on Map 20.1.

20.4.4 Extensions to Protected Structures

- (6) It is often necessary to permit new extensions to a Protected Structure so as to adapt it to modern living or to make it economically viable. Proposals for new structures or extensions need careful consideration and it is an objective of the Council that new development should not have any adverse effects on the character of the structure.

20.4.5 Change of Use of Protected Structures

- (7) Sympathetic reuse and/or development of structures, including appropriate contemporary design additions near to protected structures, can allow our architectural heritage to continue to offer aesthetic, environmental and economic benefits for future generations. It is an objective of the Council to consider the appropriate change of use of a Protected Structure.

20.4.6 Retention and Re-use of Older Buildings which are not protected

- (8) The retention, rehabilitation and reuse of older buildings can play a pivotal role in the sustainable development of the county. County Kildare contains many older buildings and the council recognises the contribution made by older buildings, both individually and collectively, to the unique character, heritage and identity of the County. The retention and reuse of older buildings can engender environmental benefits through the reduction in waste generated. To facilitate retention of older buildings, the Council will give consideration to the relaxation of car parking and other Development Control requirements in appropriate circumstances.

20.4.7 Upper Floor Use

- (9) Over recent years there has been increasing pressure for housing in Kildare whilst the need for a greater housing mix has also developed. Historic buildings often present an opportunity to provide accommodation in upper floors above ground floor shops and offices. Mixed uses also provide variety and vibrancy to an area whilst preventing a building from falling into dereliction. It is an objective of the

Council to encourage the use of upper floors. The Council will give consideration to the relaxation of car parking and other Development Control requirements in appropriate circumstances.

20.4.8 Traditional Fabric

- (10) Historic buildings comprise a range of construction materials, which contribute to the character, colour, texture, and patina of age of a building and it is an objective of the Council to encourage the retention of original and early building fabric.

20.4.9 Protection of Non-Structural Elements

- (11) Many non-structural elements, such as historic gardens, stone walls, ditches and street furniture make a positive contribution to our built heritage and it is an objective of the Council to protect such items. Carelessness and a lack of awareness can result in the loss of these elements. Non-structural elements can make an important contribution to the character of an area and help to create a distinctive sense of place. Such items include lamp standards, post boxes, milestones, water pumps, paving, kerbing, paving, cobbles and setts, plaques, statues, other monuments and stone walls.

20.4.10 Industrial Architecture

- (12) There are many fine examples of Industrial architecture, such as distilleries, warehouses, and forges, in the County and they make a strong contribution to the character of a place. However, for the most part these structures are no longer used for their original purpose. It is an objective of the Council to protect industrial architecture and to encourage appropriate new uses to be found for vacant structures.

20.4.11 Vernacular Architecture

- (13) Vernacular architecture, including thatched cottages and farmhouses, makes a strong contribution to the character of the countryside and streetscape and it is an objective of the council to protect vernacular architecture in County Kildare for the benefit of future generations.

20.5 Policy Statements

It is the policy of the Council:

20.5.1 Record of Protected Structures

AH1 To protect the architectural heritage of the County and to include all structures considered to be of special architectural, historical, archaeological, artistic, cultural, scientific, social or technical interest in the Record of Protected Structures.

AH2 Using the provisions of Part IV of the Planning & Development Act 2000-2004, to continually revise the Record of Protected Structures (RPS).

20.5.2 Curtilage and Attendant Grounds of Protected Structures

AH3 To protect the curtilage of protected structures or proposed protected structures from any works which would cause loss of or damage to the special character of the protected structure and loss of or damage to, any structures of heritage value within the curtilage of the protected structure.

AH4 To protect structures and features that are considered to be of heritage value which lie within the attendant grounds of a protected structure.

AH5 To prohibit inappropriate development within the curtilage and/or attendant grounds of a Protected Structure. Any proposed development within the curtilage and/or attendant grounds must demonstrate that it is part of an overall strategy for the future conservation of the entire complex including the structures, demesne and/or attendant grounds.

AH6 That developments within Demesnes shall require 3D Digital Survey Modelling.

AH7 To only consider development within the curtilage of a Protected Structure where it can be shown that the structure, character, appearance and setting will not be adversely affected.

AH8 To support the re-development of Clongowes to ensure the continued and enhanced educational use of this protected structure. Any proposed development within the curtilage and/or attendant grounds must demonstrate that it is part of an overall strategy for the future conservation of the entire complex including the structures, demesne and/or attendant grounds.

20.5.3 Views Within the Curtilage of Protected Structures

AH9 (a) To maintain the views from Castletown House to the River Liffey and to maintain views along paths within the curtilage and also to maintain views within Carton Demesne.

AH9 (b) To require that new works will not obscure views of principal elevations of protected structures.

20.5.4 Works to Protected Structures and Older Buildings

AH10 To promote best practice and the use of skilled specialist practitioners in the conservation of, and any works to, protected structures.

AH11 To encourage high quality contemporary design in relation to planning applications that are made for the construction of extensions or new buildings affecting Protected Structures or older buildings of architectural merit not included in the RPS. The Council will not encourage pastiche design.

20.5.5 Change of Use

AH12 To favourably consider the change of use of any structure included in the Register of Protected Structures provided such a change of use does not adversely impact on its intrinsic character.

AH13 To actively encourage uses, that are compatible with the character of protected structures. In certain cases, the Planning Authority may relax site zoning restrictions in order to secure the preservation and restoration of the structures. These restrictions, including site development

standards, may be relaxed if the protected structure, its special interest, character & setting of the buildings is protected to the highest standard and the use and development is consistent with conservation policies and the proper planning and development of the area.

AH14 To promote the maintenance and appropriate reuse of older buildings of architectural, cultural, historic and aesthetic merit which make a positive contribution to the character, appearance and quality of local streetscapes and the sustainable development of the County. Any necessary works will be carried out in accordance with best conservation practice.

20.5.6 Upper Floor Use

AH15 To encourage the use of upper floors of Protected Structures and older buildings, preferably for residential purposes, provided such a change does not adversely impact on the intrinsic character of the structure.

20.5.7 Traditional Fabric

AH16 To promote the retention of original or early building fabric including timber sash windows, stonework, brickwork, joinery, render and slate. Likewise the Council will encourage the re-instatement of historically correct traditional features.

20.5.8 Fire Damage Affecting Protected Structures

AH17 Where a Protected Structure has been damaged by fire, the retention of those elements that make it of special interest and which have survived, either in whole or in part, shall be retained where this is practicable.

20.5.9 Demolition of Protected Structures

AH18 To strongly resist the demolition of any Protected Structure, unless the Council is satisfied that exceptional circumstances exist. The demolition of a Protected Structure with the retention of its façade will likewise not generally be permitted. In all such cases the opinion of the DoEHLG and other relevant bodies will be sought.

20.5.10 Recording

- AH19 That all applications in relation to a Protected Structure should include an architectural heritage assessment report which should assess the implications of the development for the character of the existing structure and the area in which it is located.

20.5.11 Protection of Non-Structural Elements

- AH20 To protect and retain important non-structural elements of the built heritage. These elements include historic gardens, stone walls, landscapes and demesnes, curtilage features and street furniture.

20.5.12 Industrial Architecture

- AH21 To encourage appropriate change of use and reuse of industrial buildings, provided such a change does not seriously impact on the intrinsic character of the structure and that any works are carried out in accordance with best conservation practice.

20.5.13 Vernacular Architecture

- AH22 To resist the demolition of vernacular architecture, in particular thatched cottages and farmhouses and to encourage the reuse of vernacular architecture including farm buildings, provided such a change does not seriously impact on the intrinsic character of the structure and that any works are carried out in accordance with best conservation practice.

20.5.14 Shopfronts

- AH23 To seek the repair and retention of traditional timber and/or rendered shop fronts and pub fronts, including those that may not be protected structures.

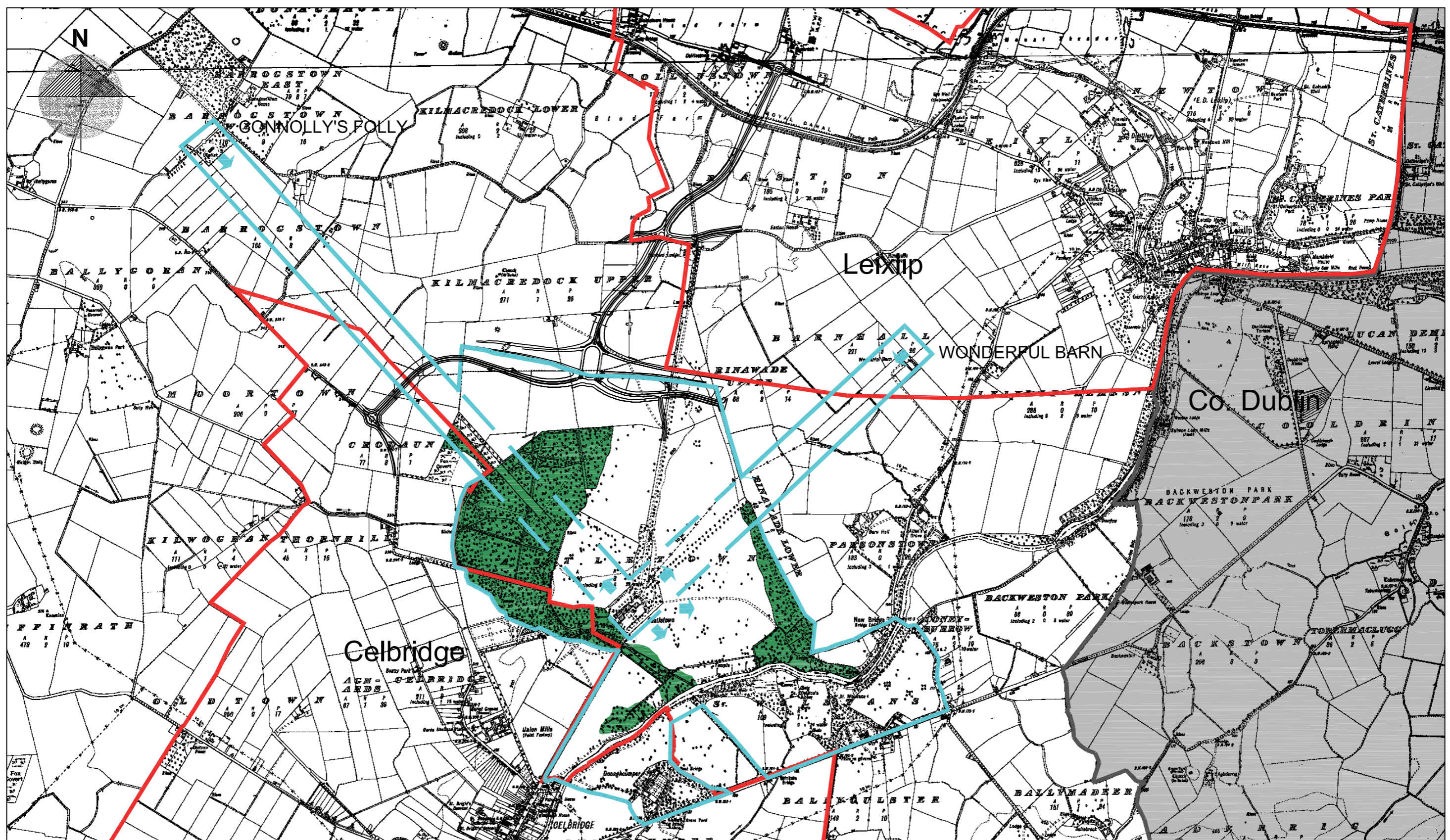
20.5.15 Conservation Grants for Protected Structures

- AH24 To endeavour to strategically target conservation funding for specific priority projects.

20.5.16 Guidelines for Planning Authorities

- AH25 That all proposed applications for Protected Structures will be assessed by taking into consideration the advice contained in Architectural Heritage Protection, Guidelines for Planning Authorities 2004.





**KILDARE COUNTY COUNCIL
PLANNING DEPARTMENT
St. MARY'S NAAS**

CASTLETOWN - DONAGHCUMPER
County Development Plan 2005 - 2011

- Legend:**
- Boundary of Area to be Protected —
 - County Boundary —
 - Leixlip & Celbridge Town Dev. Boundaries —
 - Woodland to be Preserved ■
 - Views to be Preserved ➔

Scale:
N.T.S.

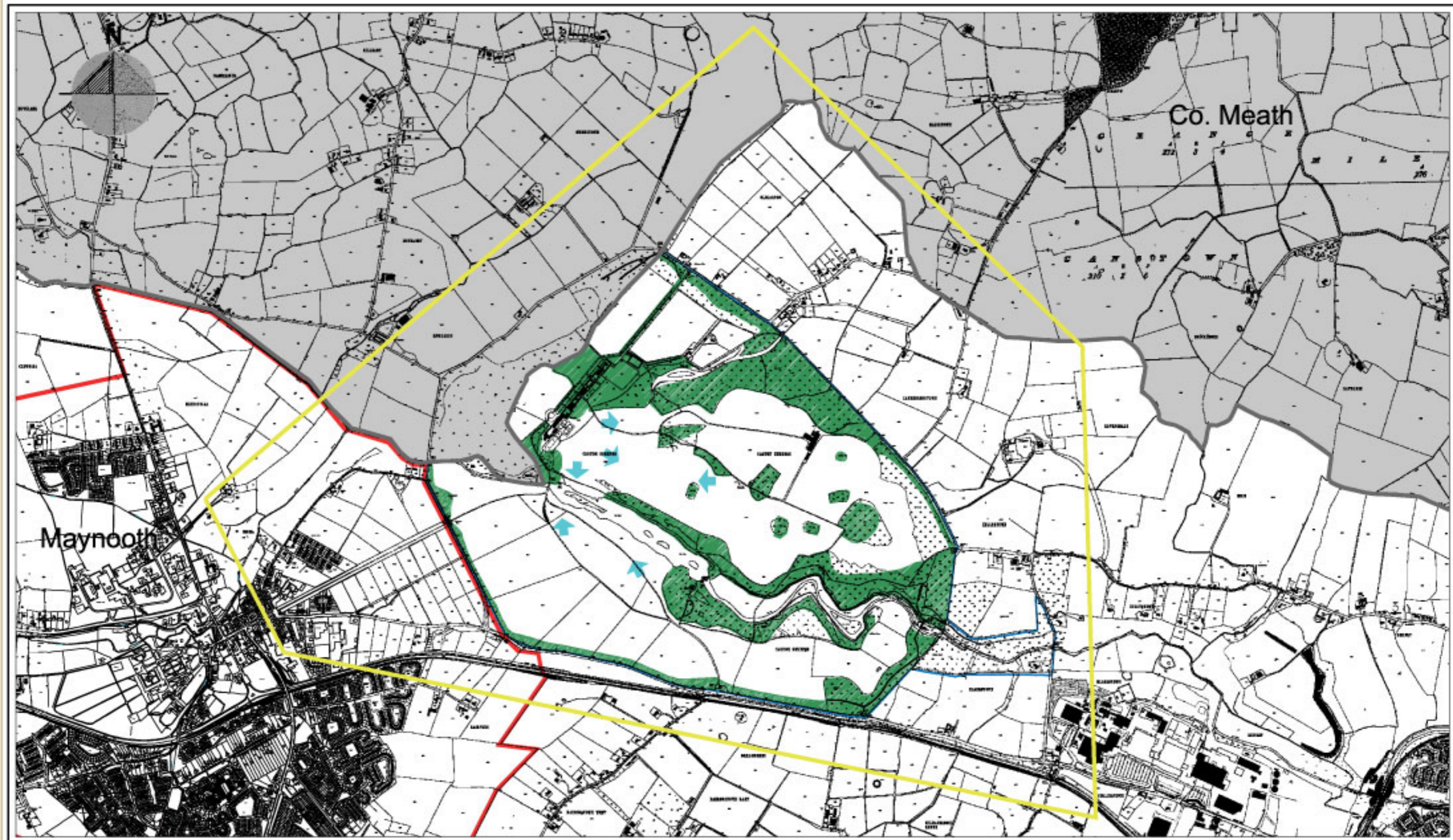
Map Ref:
20.1

Date:
May 2005

Drg No:
200/05/154

*THIS DRAWING IS TO BE READ IN
CONJUNCTION WITH THE WRITTEN STATEMENT*

© Ordnance Survey Ireland. All rights reserved.
Licence No.: 2004/07CCMA (Kildare County Council)



KILDARE COUNTY COUNCIL
PLANNING DEPARTMENT
St. MARY'S NAAS

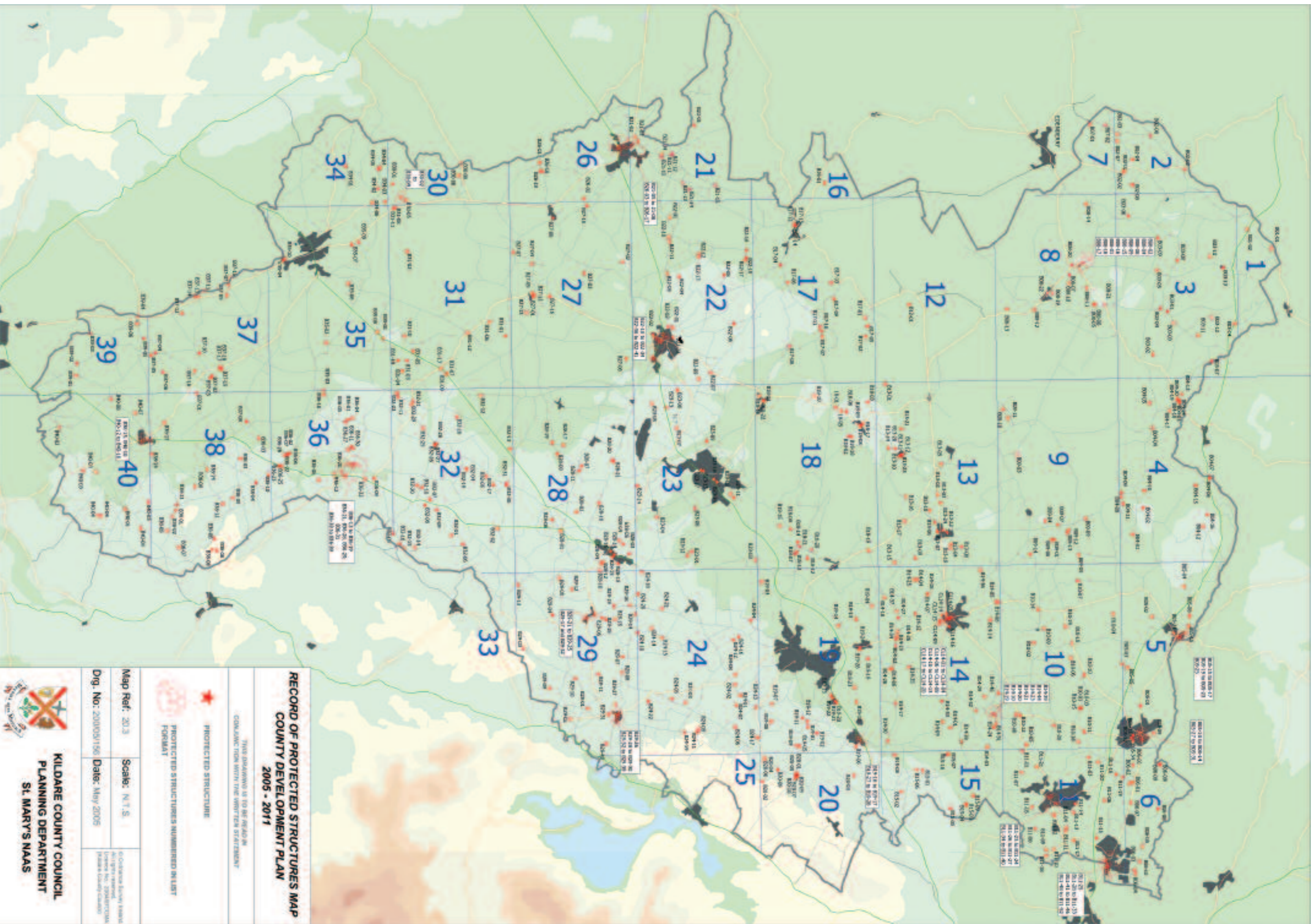
CARTON DEMESNE
 County Development Plan 2005 - 2011

- Legend:**
- Special Study Area █
 - County Boundary █
 - Maynooth Town Development Boundary █
 - Woodland to be Preserved █
 - Views to be Preserved ➤
 - Demesne Wall █

Scale:	N.T.S.	Map Ref:	20.2
Date:	May 2005	Drg No.:	200/05/155

THIS DRAWING IS TO BE READ IN CONJUNCTION WITH THE WRITTEN STATEMENT

© Ordnance Survey Ireland. All rights reserved.
 License No.: 2004/07CCMA (Kildare County Council)



**RECORD OF PROTECTED STRUCTURES MAP
COUNTY DEVELOPMENT PLAN
2005 - 2011**

THIS DOCUMENT IS TO BE READ IN
CONJUNCTION WITH THE WRITTEN STATEMENT

PROTECTED STRUCTURE

PROTECTED STRUCTURES NUMBERED IN LIST
FORMAT

Map Ref: 2013 Scale: N 1 : 5

Dir. No: 200504156 Date: May 2005



**KILDARE COUNTY COUNCIL
PLANNING DEPARTMENT
ST MARY'S NAAS**

Table 20.1 Record of Protected Structures for County Kildare

This document is the record of Protected Structures which existed on 18th May 2005. It should be noted that additions to and deletions from the Record of Protected Structures are made on an ongoing basis and details of amendments to the Record can be obtained from the Planning Office

Ref. No	NIAH Ref.	Building Address	Townland	Town	Description	OS 6" Map Ref
B01-01		Ballynakill Rath	Ballynakill		Enclosure	1
B02-01		Carrick Castle	Carrick		Castle	2
B02-02		Brackagh Holy Well - "Lady Well"	Brackagh		Holy Well	2
B02-02A		Brackagh Holy Well - "Lady Well"	Brackagh		Holy Well	2
B02-03		Grange Castle	Grangewest		Castle	2
B02-04		Witches' Stone, Carrick Hill	Carrick		Witches' stone	2
B02-05		Carrick Church (in ruins)	Carrick		Church	2
B02-06	11900201	Rahan Church	Rahin		Church	2
B02-07	11900202	Grange House	Kinnafad		House	2
B02-08		Ballindoolin House	Ballindoolin		House	2
B03-01		Cadamstown Medieval Cross, Socket and part of cross	Cadamstown	Johnstown Bridge	Medieval Cross, Socket and part of cross	
B03-02		Kilshancoe Triangular Earthworks	Kilshancoe		Earthworks	3
B03-03		Base of Cross	Clonagh		Base of Cross	3
B03-04		Church (in ruins)	Cadamstown	Johnstown Bridge	Church	3
B03-05	11900304	Ballinderry House	Ballinderry		House	3
B03-06		Williamstown House	Williamstown		House	3
B03-07		Blackwater Aqueduct	Kilmore		Aqueduct	3
B03-08	11900308	Kilglass House	Kilglass		House	3
B03-10		Bell Tower in grounds of Garrisker House	Garrisker		Bell Tower	3
B03-11		Kilmore House	Kilmore		House	3
B04-01		Ballykeelan Moated Site	Ballykeelan		Moated Site	4
B04-02		Ovidstown Ringfort	Ovidstown		Ringfort	4
B04-03		Johnstown Bridge - 2 Medieval Carved Stones	Johnstown		2 Medieval Carved Stones	4
B04-04		Dunferth Church Ruins and Hamilton Mausoleum and carved stones	Dunferth		Church and Hamilton Mausoleum & Carved Stones	4
B04-06		Cloncurry Church Ruins and Mausoleum	Cloncurry		Church and Mausoleum	4
B04-07		Cloncurry Moat	Cloncurry		Motte	4
B04-08		Moat at Hortland	Hortland		Motte	4
B04-09		Plaque on Bishops Chair Bridge	Hortland		Plaque on bridge	4
B04-10	11900407	Knockanally House*	Knockanally		House	4
B04-11		Hortland House	Hortland		House	4
B04-12		Cappagh Windmills in ruins	Cappagh		Windmill	4
B04-13	11801001	Windmill in ruins Johnstown Bridge	Johnstown		Windmill	4
B04-14	11801004	Catholic Church and interior of St. Patricks	Johnstown Bridge	Johnstown	Church	4
B05-01		Laraghbryan Church (in ruins)	Laraghbryan East		Church and graveyard	5
B05-02		Courtown House	Courtown Great	Kilcock	House	5
B05-03		Laragh House	Laragh Demesne	Maynooth	House	5
B05-04		Pitchfordstown House	Pitchfordstown	Kilcock	House	5
B05-05		"Lara" (house)	Roestown		House	5
B06-01		Donaghmore Church Ruins	Donaghmore	Maynooth	Church	6
B06-02		Donaghmore Early Field System	Donaghmore	Maynooth	Early Field System	6
B06-03		Confey Church Ruins	Confey	Lexlip	Church and Graveyard	6
B06-05		Knockmulrooney Tower	Confey	Lexlip	Tower House	6
B06-09		Carton House and associated outhouses, stables and yards	Carton Demesne	Maynooth	House	6
B06-09i		Interiors of Carton Demesne (House and Gardens)	Carton Demesne	Maynooth	House and Garden	6
B06-10		Confey Abbey	Confey	Lexlip	Abbey	6

* Knockanally House - Currently in use as a club house

Table 20.1 Record of Protected Structures for County Kildare - *Continued*

Ref. No	NIAH Ref.	Building Address	Townland	Town	Description	OS 6" Map Ref
B06-11		Grangewilliam House	Donaghmore and Barrogstown East	Maynooth	House	6
B07-01		Kinnafad Castle	Kinnafad		Castle	7
B08-02		Remains of Church	Carbury	Carbury	Church and Graveyard	8
B08-03		Carbury Moat	Carbury	Carbury	Moat	8
B08-04		Carbury Tumulus and Earthworks	Carbury	Carbury	Tumulus and Earthworks	8
B08-05		Ardkill Ancient Field System	Ardkill	Carbury	Field System	8
B08-06		Ruins of Ardkill Castle	Ardkill	Carbury	Castle	8
B08-07		Trinity Well at Newbury Hall	Demesne		Well	8
B08-08*		Carved Stone in Carbury Village (house opposite Garda Barracks)	Carbury	Carbury	Carved Stone	8
B08-09		Carved Stone on Council Store at Carbury	Carbury	Carbury	Carved Stone	8
B08-10		Newbury Hall	Demesne		House	8
B08-11	11900811	Ardkill House - Carbury	Ardkill	Carbury	House	8
B08-13		Drummin House	Drummond	Carbury	House	8
B08-14		Oldcourt House	Oldcourt		House	8
B08-15		Church of Ireland	Carbury	Carbury	Church	8
B09-01		Donadea Canopied tomb & Medieval Church Ruins	Donadea Demesne		Canopied Tomb and Medieval Church	9
B09-02		Donadea Castle	Donadea Demesne		Castle	9
B09-03		Disused Burial Ground	Hodgestown		Burial ground	9
B09-04		Dunmurraghill Early Church Site	Dunmurraghill		Early Church Site	9
B09-05		Ringfort	Donadea		Ringfort	9
B09-06		Donadea Demesne - Castle, including 17th - 19th century additions	Donadea Demesne		Castle	9
B09-07	11900904	Estate Housing (The Range)	Dunmurraghill		House	9
B09-08		Lime Kiln	Dunmurraghill		Lime Kiln	9
B09-09		Newpark House	Newtownmoneenluggagh		House	9
B09-10		Coolcarrigan House	Coolcarrigan	Coil Dubh	House	9
B09-11		Coolcarrigan Church	Coolcarrigan	Coil Dubh	Church	9
B09-12*		Hillview (former Post Office)	Dunmurraghill		House	9
B09-13		The Rectory	Dunmurraghill		Rectory	9
B09-14		Kilnamargh House	Kilnamargh South		House	9
B10-01		Round Tower	Taghadee	Maynooth	Round Tower	10
B10-03		Church and Graveyard	Taghadee	Maynooth	Church and graveyard	10
B10-04		Surviving Portions of the Pale:			Surviving Portions of the Pale	10
B10-04A		Surviving Portions of the Pale at (a) Ballyloughan			Surviving Portions of the Pale	10
B10-04B		Surviving Portions of the Pale at (b) Ballybrack, Ballyloughlan, Graigepottle, Clonduff, and Clonfert South			Surviving Portions of the Pale	10
B10-04C		Surviving Portions of the Pale at (c) Clongowes			Surviving Portions of the Pale	10
B10-05		St. Patrick's Well	Ardross	Celbridge	Holy Well	10
B10-06		Cowanstown Church Ruins and Holy Well	Cowanstown	Maynooth	Church and Holy Well	10
B10-07		Killeen Moat	Clonshanbo		Moat	10
B10-08		Barberstown Castle	Barberstown	Celbrige	Castle	10
B10-09	11901002	Rathcoffey Catholic Church	Rathcoffey North	Rathcoffey	Church	10
B10-10	11901005	Donaghstown Catholic Church	Donaghstown	Maynooth	Church	10
B10-11		Toolestown House	Toolestown	Maynooth	House	10
B10-13		Barberstown Castle	Barberstown	Celbridge	Castle	10
B10-14	11901001	Thatched Dwelling, Painestown Cross Roads	Moortown		Thatched Dwelling	10

* Carved Stone - Located in house opposite the Garda Barracks

* Hillview - Former Post Office

Table 20.1 Record of Protected Structures for County Kildare - *Continued*

Ref. No	NIAH Ref.	Building Address	Townland	Town	Description	OS 6" Map Ref
B10-15		Taghadoe House	Taghadoe	Maynooth	House	10
B10-16		Corballis House	Corbally	Celbridge	House	10
B10-17		"Greygates" (house)	Barberstown Upper	Celbridge	House	10
B11-01		St. Patrick's Chapel	Ardrass Lower	Celbridge	Chapel	11
B11-02		Donaghcumper Medieval Church Ruins	Donaghcumper	Celbridge	Medieval Church	11
B11-03		Griffinrath Ringfort	Griffinrath	Celbridge	Ringfort	11
B11-04		St. Wolstan's Abbey	St. Wolstan's	Celbridge	Abbey	11
B11-05		Site of Castle	Simmonstown		Site of Castle	11
B11-06		Kilmacredock Church Ruins	Kilmacredock		Church	11
B11-07		Kiladoon Country House	Kiladoon		House	11
B11-08		Elm Hall House	Loughlinstown	Celbridge	House	11
B11-09	11901103	Stacumny House	Stacumny	Celbridge	House	11
B11-10		Stacumny Lodge	Stacumny	Celbridge	Lodge	11
B11-13		Castletown House, Temple, Batty Langley Lodge, Entrance Gates and Avenue	Castletown	Celbridge	House	11
B11-14		Castletown Walled Garden and pedimented arch and nearby temple	Castletown	Celbridge	Walled Garden and pedimented arch and nearby temple	11
B11-15	11901102	Wonderful Barn complex	Barnhall	Lexlip	Barn	11
B11-18		Stacumny Cottage	Stacumny	Celbridge	Cottage	11
B11-19		Grangewilliam House	Barrogstown West	Maynooth	House	11
B11-20		Ballygoran (house)	Ballygoran		House	11
B11-21		Estate Cottage	Kiladoon	Celbridge	Cottage	11
B11-22		Feighcullen Church	Feighcullen	Rathangan	Church	11
B12-01		Lullymore Monastic Enclosure	Lullymore East	Rathangan	Monastic Enclosure	12
B13-01	11901309	Ballyteige Castle	Ballyteige North	Kilmeague	Castle	13
B13-02		St. Farnan's Well	Downings North	Prosperous	Holy Well	13
B13-03		Ruined Church	Downings North	Prosperous	Church and Graveyard	13
B13-04		Eldonsfort	Curryhills	Prosperous		13
B13-05		Blackwood Castle	Blackwood		Castle	13
B13-06		Ringfort	Downings North	Prosperous	Ringfort	13
B13-09		Medieval Church Ruins	Killybegs Demesne		Medieval Church and Graveyard	13
B13-10*		Robertstown Hotel and associated waterfront buildings	Robertstown	Robertstown	Hotel and associated waterfront buildings	13
B13-11		Robertstown Garda Station	Robertstown	Robertstown	Garda Station	13
B13-13		Lowtown Depot	Robertstown	Robertstown		13
B13-14	11806001	Annsborough House and Railings	Robertstown West	Robertstown	House	13
B13-15		Landenstown House	Landenstown	Sallins	House	13
B13-17		Woodville House	Downings South		House	13
B13-18		Downings House	Downings North	Prosperous	House	13
B13-19	11807012	Curryhills House	Curryhills	Prosperous	House	13
B13-20	11806010	Robertstown House	Robertstown West	Robertstown	House	13
B13-21		Lowtown House	Grangeclare Little		House	13
B14-01		Clownings Rectilinear Earthworks ("Puddlehall Moat")	Clownings	Straffan	Moated Site	14
B14-02		Bodenstown Medieval Church Ruins and Wolfe Tone's Grave	Bodenstown	Sallins	Medieval Church and Graveyard	14
B14-03		Castledillon Graveyard and Early Church Site	Castledillon Upper		Church Site and a Graveyard	14
B14-04		Longtown Moat	Longtown Demesne	Sallins	Moat	14
B14-05*		Mainham Moat (Queen Buans Grave) and surrounding land to west & north (Site of Aonach)	Mainham	Clane	Moat	14
B14-06		Socket Stones for Crosses	Sherlockstown	Sallins	Socket Stones for Crosses	14
B14-07		Tumulus	Firmount East	Clane	Tumulus	14
B14-08		Wogan Browne Mausoleum	Mainham	Clane	Mausoleum	14

* Robertstown Hotel - In use as Training Centre and Museum

* Mainham Moat - Formerly Queen Buans grave and site of Aonach

Table 20.1 Record of Protected Structures for County Kildare - *Continued*

Ref. No	NIAH Ref.	Building Address	Townland	Town	Description	OS 6" Map Ref
B14-09		Ruined Castle and Church and Baptismal font	Whitechurch	Straffan	Church and Graveyard	14
B14-10		Church Ruins	Straffan	Straffan	Church and Graveyard	14
B14-11		Motte and Bailey	Mainham	Clane	Motte and Bailey	14
B14-12		Millicent Church and Lych Gate	Millicent Demesne	Sallins	Church and Lych Gate	14
B14-13		Castlesize House	Castlesize	Sallins	House	14
B14-14		Clongoweswood College	Clongowes		College	14
B14-15		Wogan Browne Mausoleum	Mainham	Clane	Wogan Browne Mausoleum	14
B14-16		Sandymount House	Fleshtown	Sallins	House	14
B14-18		Moatfield House	Firmount East	Clane	House	14
B14-19		Catholic Church	Straffan	Straffan	Church	14
B14-20	11809001	Church of Ireland Church	Straffan	Straffan	Church	14
B14-21		Lych Gate to Graveyard	Straffan	Straffan	Lych gate into Graveyard	14
B14-22		Old RIC Barracks	Straffan	Straffan	Old RIC Barracks	14
B14-25		Entrance arch of Longtown House	Longtown Demesne	Sallins	House	14
B14-26		Millicent House	Millicent		House	14
B14-28		Sherlockstown House	Sherlockstown	Sallins	Tower House	14
B14-29	11809026	Straffan House and Gates	Straffan Demesne	Straffan	House and Gates	14
B14-31*		Lodge at Lodge Park House (due west of main house)	Lodgepark	Straffan	Lodge	14
B14-32	11809019	Millbrook House	Turnings Lower	Straffan	House	14
B14-33		Turnings House and lodge/entrance walls	Turnings Upper	Straffan	House	14
B14-34*		Gate Lodge and entrance gates/walls to east of Castlesize House	Castlesize	Sallins	Gate Lodge and Entrance gates and walls	14
B14-35		Prospect (house)	Prospect	Sallins	House	14
B15-01		Round Tower and Church	Oughterard	Straffan	Round Tower and Church	15
B15-01A		Round Tower and Church	Oughterard	Straffan	Round Tower and Church	15
B15-02		Medieval Earthwork Complex	Castlewarden North	Straffan	Rectangular Enclosure	15
B15-03		Lyons Church and Carvings	Lyons Demesne		Church and Graveyard	15
B15-04		Site of Castle and Medieval Village	Lyons Demesne		Castle	15
B15-05		Earthworks	Lyons Demesne		Earthworks	15
B15-06		Oughterard Castle (in ruins)	Oughterard	Straffan	Castle	15
B15-07		Roman Catholic Church	Ardclough		Church	15
B15-08		Bishopscourt House	Bishopscourt Upper	Kill	House	15
B15-09		Lyons House & Interiors (including Gabrielli murals)	Lyons Demesne		House	15
B15-10		Old School House	Ardclough		Old School House	15
B15-11		Stone Cottage (single storey)	Clonaghilis	Straffan	Stone Cottage	15
B17-01		Earthworks	Drumsru	Rathangan	Enclosure	17
B17-02		Ringfort	Cloncumber	Kilmeague	Ringfort	17
B17-04		Boherkill Forge (including horseshoe arch)	Boherkill	Rathangan	Forge	17
B17-05		Two footbridges over Slate River (formerly mass path)	Cloncumber	Rathangan	2 Footbridges	17
B17-06		Kilmoney House	Kilmoney South	Rathangan	House	17
B18-01		Church ruins and Fr. Moore's Grave at Allen Church Yard	Allen		Church and Graveyard	18
B18-02		Kilmeague Church Ruins	Rathernan	Kilmeague	Church and Graveyard	18
B18-03		Church ruins at Crosspatrick near Kilmeague	Ballintine	Kilmeague	Church Site and Graveyard	18
B18-04		St. Patrick's Well	Barretstown		Holy Well	18
B18-05		Allen Catholic Church	Allen		Church	18
B18-06		St. Brigid's Path (near Allen)	Ballintine	Kilmeague	Path	18
B18-07		Victoria Bridge	Yeomanstown/Moortown	Naas	Bridge	18
B18-08		Church of Ireland	Kilmeague	Kilmeague	Church	18

* Lodge at Park House - Due west of main house

* Gate Lodge and Entrance - To east of Castlesize House

Table 20.1 Record of Protected Structures for County Kildare - *Continued*

Ref. No	NIAH Ref.	Building Address	Townland	Town	Description	OS 6" Map Ref
B18-10		Hill of Allen Tower	Carrick		Tower	18
B18-11		Milltown Catholic Church and gates	Milltown	Milltown	Church	18
B18-12		Yeomanstown House	Yeomanstown	Naas	House	18
B18-14		Morristown Lattin	Morristown Lower	Naas	House	18
B19-01		Furness Church at Furness House	Forenaghts Great	Naas	Church and Graveyard	19
B19-02		Forenaghts Great Rath and Standing Stone	Forenaghts Great	Naas	Ringfort and Standing Stone	19
B19-03		Ringfort	Ladytown	Naas	Ringfort	19
B19-04		Barretstown Group of Barrows (4)	Barretstown		Ring Barrow	19
B19-05		Arch of Haynestown Castle	Haynestown	Naas	Arch of Castle	19
B19-06		Kilhill Moat	Kilhill		Moat	19
B19-07		Graveyard and Church (in ruins)	Tipper South	Naas	Church and Graveyard	19
B19-08		Stone Cross	Newtown		Tumulus	19
B19-08A		Stone Cross	Newtown		Standing Stone	19
B19-09		Site of Cist Burial	Haynestown	Naas	Cist	19
B19-10	11812027	Palmerstown House and entrance gates	Palmerstown Demesne	Johnstown Demesne	House	19
B19-11		Forenaghts House	Forenaghts Little	Naas	House	19
B19-12		Furness House - Doric column and statue	Forenaghts Great	Naas	House	19
B19-13		Leinster Aqueduct	Waterstown/Osberstown	Sallins	Aqueduct	19
B19-13A		Leinster Aqueduct	Waterstown/Osberstown	Sallins	Aqueduct	19
B19-14		Osberstown House	Osberstown	Sallins	House	19
B20-01		Rathmore Moat (motte)	Rathmore	Rathmore	Motte	20
B20-02		Moat	Wolfstown	Rathmore	Enclosure	20
B20-03		Moat	Rathgorragh	Kill	Ringfort	20
B20-05		Church of Ireland Church	Rathmore West	Eadestown	Church	20
B20-06	11902001	Roman Catholic Church	Eadestown		Church	20
B20-07		Rathmore House	Rathmore East	Rathmore	House	20
B21-01		Yew Tree Graveyard	Clogheen	Monasterevin	Ecclesiastical remains	21
B21-02	11816100	Pass Bridge	Coolnafearagh	Monasterevin	Bridge	21
B21-03		Ruined Church and Cassidy Mausoleum	Passlands	Monasterevin	Church & Cassidy Mausoleum	21
B21-04	11902103	Ballykelly Maltings	Millfarn			21
B22-01		Lackagh Beg Ring Barrow	Lackagh Beg		Earthworks	22
B22-02		Lough Minane	Lough Minane (Kildare)	Kildare		22
B22-03		Black Abbey	Kildare	Kildare	Abbey	22
B22-04		Rathwalkin Barrow	Rathwalkin	Kildare	Ring Barrow	22
B22-05		Base of cross	Crossmorris	Kildare	Wayside Cross	22
B22-06		Burial Ground	Dunmurray	Kildare	Burial Ground	22
B22-07		Base of Cross	Rathbride Cross Roads	Kildare	Base of Cross	22
B22-08		Watergrange Barrow and Earthworks	Watergrange	Kildare	Barrow and Earthworks	22
B22-09		Two earthworks	Little Curragh		Earthworks	22
B22-10		Tumulus	Lackagh More		Tumulus	22
B22-11		Church ruins and Barbadoes Monument	Lackagh More		Church Site and Graveyard	22
B22-12		Knavinstown Church ruins and graveyard	Knavinstown	Kildare	Church and graveyard	22
B22-13		Knavinstown House & associated farm buildings	Knavinstown	Kildare	House	22
B22-14		Church of Ireland Church	Lackagh		Church	22
B22-14A		Church of Ireland Church	Lackagh		Church	22
B22-16		Springfield Country House	Tullylost	Rathangan	House	22

Table 20.1 Record of Protected Structures for County Kildare - *Continued*

Ref. No	NIAH Ref.	Building Address	Townland	Town	Description	OS 6" Map Ref
B22-17		Thomastown Country House	Thomastown West	Kildare	Enclosure	22
B23-01		Great Connell Standing Stone	Herbert		Standing Stone	23
B23-02		Old Connell Moat	Oldconnell	Newbridge	Motte and Bailey	23
B23-03		Ladytown Watch House	Ladytown		House	23
B23-04		Rosetown Rath	Rosetown		Ringfort	23
B23-05		Curragh Gibbet Rath and two smaller earthworks nearby	Curragh		Ringfort and two smaller earthworks nearby	23
B23-06		Walshe's Rath	Curragh		Ringfort	23
B23-07		Site of Ancient Road across Curragh	Curragh		Site of Ancient Road	23
B23-08		Ruins of Great Connell Abbey and Medieval Carved Stone	Greatconnell	Newbridge	Abbey and Standing Stone	23
B23-09		Morristownbiller Motte and Bailey	Morristownbiller	Newbridge	Motte and Bailey	23
B23-10		Father Moore's Well	Rathbride		Well	23
B23-12		Corbally Harbour	Herbert			23
B23-13		Herbert Lodge	Curragh		Lodge	23
B24-01		"The Long Stone"	Punchestown Great	Naas	Standing Stone	24
B24-02		Craddockstown West Standing Stone	Craddockstown West	Naas	Standing Stone	24
B24-03		Sillagh Earthworks - "The Ring"	Sillagh	Ballymore Eustace	Earthworks	24
B24-04		Rath	Rathasker	Naas	Ringfort	24
B24-05		Motte and Bailey	Donode Big	Ballymore Eustace	Motte and Bailey	24
B24-06		Ringfort	Blackhall, Rathmore		Ringfort	24
B24-07		Punchestown Moat	Punchestown Great	Naas	Motte	24
B24-09		Ruined Church	Tipperkevin	Ballymore Eustace	Church	24
B24-10		Ruins of Harristown Castle and artificial waterway	Harristown	Brannockstown	Settlement deserted	24
B24-11		Toberkevin	Tipperkevin	Ballymore Eustace	Trackway	24
B24-12		Killashee Church, including headstones and souterrain	Killashee	Naas	Church and Graveyard	24
B24-13	11902408	Beggar's End thatched cottage	Baltreacy	Naas	Thatched cottage	24
B24-15		Dunshane House	Johnstown or Dunshane	Brannockstown	House	24
B24-16		Killashee House	Killashee	Naas	House	24
B24-17		Eadestown House	Eadestown		House	24
B24-19		Old Forge	Elverstown		Forge	24
B26-01	11902602	Riverstown House, including farm buildings and St. Brigid's Well	Riverstown		House and Well	26
B26-02	11902601	Clonegath House	Clonegath	Monasterevin	House	26
B27-01		Nurney Castle (in ruins)	Nurney		Castle	27
B27-02		Dolmen	Grangebeg	Kildare	Megalithic Structure	27
B27-03		Ruined Church and walled graveyard	Dunaney		Church and Graveyard	27
B27-04		Church in ruins at Harristown	Harristown Lower	Brannockstown	Church and Graveyard	27
B27-05		Pigeon House	Nurney		House	27
B27-07		Cherrymills House	Cherrymills	Monasterevin	House	27
B27-08	11902701	Kildangan Catholic Church, including the O'Reilly Memorial Brass of 1820	Kildangan	Monasterevin	Church	27
B27-09	11902707	Nurney Roman Catholic Church	Nurney	Nurney	Church and Graveyard	27
B27-10	11902706	O'Brien's Shopfront	Walterstown	Nurney	Shopfront	27
B27-11	11902711	Nurney Church of Ireland Church	Nurney Demesne	Nurney	Church	27
B27-12		Nurney Pigeon House and Gate Lodge	Nurney	Nurney	House and Gate Lodge	27
B27-13		Nurney House	Nurney Demesne	Nurney	House	27
B27-14		Old RIC Barracks	Blackditch	Nurney	Old RIC Barracks	27
B28-01		Church Site	Old Kilcullen	Kilcullen	Church Site	28
B28-01A		Church Site, Round tower and two crosses	Old Kilcullen	Kilcullen	Church Site Crosses	28

Table 20.1 Record of Protected Structures for County Kildare - *Continued*

Ref. No	NIAH Ref.	Building Address	Townland	Town	Description	OS 6" Map Ref
B28-02		Dún Áilline Hill Fort	Knockaulin		Hill Fort	28
B28-03		Multiple Ring Barrow at Kilcullen Bridge	Logstown		Multiple Ring Barrow	28
B28-04		New Abbey Church in Ruins and Medieval Altar tomb	Nicholastown	Kilcullen	Abbey church and Medeval Alter tomb	28
B28-05		Castlemartin Medieval Church & Carved Stones	Castlemartin	Kilcullen	Medieval Church and Carved Stones	28
B28-06		Tumulus	Old Kilcullen	Kilcullen	Tumulus	28
B28-08		Castlemartin House - including gates, restored church and ice house	Castlemartin	Kilcullen	House	28
B28-09		Martinstown Gothic Lodge	Martinstown		Lodge	28
B29-01		Long Stone	Broadleas Commons	Ballymore Eustace	Long Stone	29
B29-06		Sylvester's Church and Font at Brannockstown	Brannockstown	Brannockstown	Church and Font	29
B29-07		Ruined Church and Base of Cross	Coughlanstown West	Ballymore Eustace	Church and base of Cross	29
B29-08		Stone Cross	Coughlanstown West	Ballymore Eustace	Stone Cross	29
B29-09		Ring Fort	Allingstown		Ring Fort	29
B29-10		Barrow	Ballybough	Ballymore Eustace	Barrow	29
B29-11		Ardenode House	Ardenode East	Ballymore Eustace	House	29
B29-13	11902902	Gormanstown Catholic Church	Gormanstown		Catholic Church	29
B29-14		Woodville House	Dunnstown	Brannockstown	House	29
B29-15	11821006	Harristown House and gates	Harristown	Brannockstown Demesne	House and Gates	29
B29-16		Carnalway House	Carnalway		House	29
B29-17		Gothic lodge and gates	Brannockstown	Brannockstown	Lodge and gates	29
B29-18		Old bridge	Harristown Demesne	Brannockstown	Bridge	29
B29-19		New bridge (1788)	Harristown		Bridge	29
B30-01		Remains of Rhebans Castle	Castlereban North	Athy	Castle	30
B30-02		Kilberry Castle in ruins	Kilberry	Athy	Castle	30
B30-03		Kilberry Church in ruins	Kilberry	Athy	Church	30
B30-04		Kilberry Abbey in ruins	Kilberry	Athy	Abbey	30
B30-05		Castleready in ruins	Kilberry	Athy	Castle	30
B30-06		Church in ruins	Cloney	Athy	Church	30
B30-07		Dunrally House	Cloney	Athy	House	30
B30-08		Dunrally Bridge	Cloney	Athy	Bridge	30
B31-01		Earthworks	Sorteen Upper		Earthworks	31
B31-02		Site at Killart Church	Oldcourt	Athy	Site at Church	31
B31-03		Kilmeade Circular Burial and Fitzgerald Tomb	Kilmeade	Athy	Circular Burial Tomb	31
B31-04		Kilmeade Moat	Kilmeade	Athy	Moat	31
B31-07	11903110	Fontstown Church of Ireland Church	Fontstown Lower	Fontstown	Church	31
B31-08	11903101	Kilberry (Bert) Church of Ireland Church	Bert Demesne	Kilberry	Church	31
B31-09	11903109	Old School House	Fontstown Lower	Athy	Old School House	31
B32-01		2 Ring Barrows and stone circle	Brewel West		2 Ring Barrows and Stone Circle	32
B32-02		Standing stone	Kilgowan		Standing Stone	32
B32-03		Killeencormach graveyard, Colbinstown – including all monuments contained within	Killeencormach		Graveyard	32
B32-04		Blackhall Castle	Blackhall		Castle	32
B32-05		Davidstown Church and Ruins	Davidstown		Church and associated ruins	32
B32-06		Old Burial Ground	Brewel West		Old Burial Ground	32
B32-07		Kyle Graveyard	Blackrath		Graveyard	32
B32-08		Remains of Castle, including complex of farm buildings and vernacular house	Blackrath		Castle	32
B32-09		Blackrath	Blackrath		Ringfort	32
B32-10		Earthwork	Inchaquire		Earthwork	32

Table 20.1 Record of Protected Structures for County Kildare - *Continued*

Ref. No	NIAH Ref.	Building Address	Townland	Town	Description	OS 6" Map Ref
B32-11		Old Burial Ground	Glassely	Ballitore	Old Burial Ground	32
B32-12		Church (in ruins)	Castlefarm	Ballitore	Church	32
B32-13		Earthworks	Ballyshannon Demesne		Earthworks	32
B32-14		Ballintaggart Country House	Ballintaggart	Kilcullen	House	32
B32-16		Colbinstown House	Colbinstown		House	32
B32-17	11903211	Calverstown House	Calverstown	Calverstown Demesne	House	32
B32-18		Thatched dwelling (gable-ended, 2-storey)	Great Rath	Ballitore	Thatched dwelling	32
B32-19		Blackhall House	Blackhall		House	32
B32-20		Poplar Hall	Inchaquire	Ballitore	House	32
B32-21		Old Grange House	Old Grange	Monasterevin	House	32
B32-22		Calverstown House (Georgian)	Calverstown	Kilcullen	House	32
B32-23	11903201	Glassely House	Glassely		House	32
B32-24		Drummers Well	Lipstown	Ballitore	Well	32
B34-01		Churchtown Church (in ruins)	Raheenaderragh	Athy	Church	34
B34-03	11903403	Bert House	Bert Demesne	Athy	House	34
B35-01		Ardscull Moat	Ardscull	Athy	Moat	35
B35-02		Ruins of Inch Castle	Inch	Athy	Castle	35
B35-03		Burtown Big Old Burial Ground	Burtown Big	Athy	Old Burial ground	35
B35-04	11903511	Ardree Farm House and gate lodge	Ardree	Athy	Farm House and Gate Lodge	35
B35-05		Ardree Lifting Bridge	Ardree	Athy	Lifting Bridge	35
B35-06	11903504	Geraldine House, including associated outbuildings and hitching post	Geraldine	Athy	House	35
B36-01		Earthworks	Mullamast		Earthworks	36
B36-02		Moone High Cross	Moone	Athy	High Cross	36
B36-03		Eagle Monument	Belan Demesne		Monument	36
B36-04		Rath	Mullamast		Ringfort	36
B36-05		Long Stone	Mullamast		Long Stone	36
B36-06		Ruins of Franciscan friary, portion of stone crosses and St. Columcille's Well	Moone	Athy	Ecclesiastical Remains	36
B36-07		Tower of Moone Castle	Moone	Athy	Tower of Castle	36
B36-08		Two Earthworks	Timolin		Two earthworks	36
B36-09	11903601	Roman Catholic Church	Crookstown	Ballitore	Church	36
B36-10	11903619	Burtown House, including interior plasterwork	Burtown Little	Athy	House	36
B36-11	11822052	Boakfield House	Mullamast	Ballitore	House	36
B36-12		Brookmount House	Timolin		House	36
B36-13	11822024	Water Pump	Ballitore	Ballitore	Water Pump	36
B36-14	11822009	Crookstown Mill*	Crookstown Lower	Ballitore	Mill	36
B36-15		Creamery Office	Ballitore	Ballitore	Creamery Office	36
B36-16	11822020	Quaker graveyard	Ballitore	Ballitore	Graveyard	36
B36-17		Fullers Court	Ballitore	Ballitore	Monument in wall	36
B36-18		Castellated Mill	Ballitore	Ballitore	Mill	36
B36-19	11822060	Ballitore Hill House (Greese Mount)	Ballitore	Ballitore	House	36
B36-21		Carved Stones*	Ballitore	Ballitore	Carved Stones	36
B37-01		Ring Fort	Mullaghreelan	Castledermot	Ringfort	37
B37-02	11903719	Kilkea Castle and Moat	Kilkea Demesne	Kilkea	Castle and Moat	37
B37-03	11903721	Kilkea Church (ruins) and Graveyard Monuments	Kilkea	Kilkea	Church & Graveyard monuments	37
B37-04		Castle (in ruins)	Castleroe West	Maganey	Castle	37
B37-07		Remains of St. Ledger's Castle	Grangemellon	Athy	Castle	37

* Crookstown Mill - In use as Museum/Gallery

* Carved Stones - Rear of Quaker House

Table 20.1 Record of Protected Structures for County Kildare - *Continued*

Ref. No	NIAH Ref.	Building Address	Townland	Town	Description	OS 6" Map Ref
B37-09	11903707	Grangemellon House	Grangemellon	Athy	House	37
B37-10	11903715	Millbrook Corn and Saw Mill	Beaconstown	Maganey	Corn and Saw Mill	37
B37-11		Tankardstown Bridge	Grangemellon	Athy	Bridge	37
B37-12	11903713	Levitstown House	Levitstown		House	37
B37-13	11903710	Levitstown Swing Bridge	Grangemellon	Athy	Bridge	37
B37-13A		Levitstown Swing Bridge	Grangemellon	Athy	Bridge	37
B37-14	11903711	Levitstown Mill	Levitstown		Mill	37
B37-15		Kilmorony Bridges	Grangemellon	Athy	Bridges	37
B37-16	11903718	Ernest Shackleton's House (Kilkea House)	Kilkea Upper		House	37
B38-01		Corballis Castle (ruins)	Corballis	Castledermot	Castle	38
B38-02		Corballis Church (ruins)	Corballis	Castledermot	Church	38
B38-03		Bolton Castle remains	Bolton	Moone	Castle	38
B38-04		Killelan Church Ruin	Killelan	Moone	Church	38
B38-05		Standing Stone and Earthworks	Sheriffhill	Moone	Standing stone & earthworks	38
B38-07		Carrigeen North Moat	Carrigeen		Moat	38
B38-08		Earthworks	Tankardstown		Earthworks	38
B38-09		Earthworks	Moatavanny	Castledermot	Earthworks	38
B38-11	11903804	Ballynacarrick Forge with Horseshoe arch	Corballis	Castledermot	Forge	38
B38-12		Davidstown House	Davidstown Demesne	Moone	House	38
B38-13		Woodlands	Garterfarm	Castledermot	House	38
B38-14		Marshalestown House	Marshalestown	Castledermot	House	38
B39-01		Church ruins in Bolton/ Moone	Ballaghmoon		Church	39
B39-02	11903909	Ballaghmoon Bridge	Ballaghmoon		Bridge	39
B39-03	11903908	Gotham Bridge	Gotham Bunmanoge		Bridge	39
B40-02		Ballyhade Graveyard	Ballyhade	Castledermot	Graveyard	40
B40-03		Earthworks	Knocknacree	Castledermot	Earthworks	40
B40-04		Two Earthworks	Knockshannagh	Castledermot	Earthworks	40
B40-05		Two Earthworks and graveyard	Knockpatrick	Castledermot	Earthworks and Graveyard	40
B40-06	11904004	Prumplestown Corn Mill	Johnstown South		Corn Mill	40
B40-07		Woodlands House	Woodlands West	Castledermot	House	40
B01-02	11900102	Ballyonan Corn Mill	Ballyonan			01
B02-04		Carrick Hill	Carrick		Witches' Stone	02
B03-09		Balrennet House	Balrennet		House	02
B03-12	11900312	Ballina (Balyna) House, Ballina Demesne	Ballina		House	03
B03-13	11900306	Broadford*	Royal oak	Broadford	House	03
B03-14	11900302	J Furey's	Moyvally	Moyvally	House	03
B04-05		Colree Fort	Colree		Fort	04
B04-15	11900403	Ballyvoneen House	Ballyvoneen	Cloncurry	House	04
B04-16	11900402	Cappagh House	Cappagh		House	04
B04-17	11801014	Metcalfe Park	Gorteen (DunfiethEd)	Johnstown Bridge	House	04
B04-18	11801006	Johnstown Bridge*	Johnstown Bridge (Cadamstown Ed)	Johnstown Bridge	House	04
B04-19	11801016	Johnstown Bridge	Johnstown (Cadamstown Ed)	Johnstown Bridge	House	04
B04-20	11801017	Johnstown Bridge	Johnstown (Cadamstown Ed)	Johnstown Bridge	House	04
B05-02		Courtown House	Courtown Great		House	05
B05-06	11900501	Pitchfordstown Lodge	Pitchfordstown		House	05
B05-07	11900502	Boycetown*	Boycetown	Kilcock	House	05

* Broadford - Formerly Broadford School

* Johnstown Bridge - Formerly a National School

* Boycetown - Formerly Boycetown Presbytery

Table 20.1 Record of Protected Structures for County Kildare - *Continued*

Ref. No	NIAH Ref.	Building Address	Townland	Town	Description	OS 6" Map Ref
B05-08	11900503	Saint Patrick's*	Boycetown	Kilcock	House	05
B05-09	11900506	Maria Villa	Mariavilla	Maynooth	House	05
B05-10	11803067	Butler's House, Convent Lane, Dillon's Lane	Maynooth	Maynooth	House	05
B05-11	11803050	Buckley House, Main Street	Maynooth	Maynooth	House	05
B05-12	11803045	Harbour House (Bean House), Leinster Street	Maynooth	Maynooth	House	05
B05-13	11803043	Nuzstop, Main Street	Maynooth	Maynooth	House with Shop	05
B05-14	11803039	Lyreen House, Court House Square	Maynooth	Maynooth	House	05
B05-15	11802042	Stapleton, New Lane	Kilcock	Kilcock	House with Shop	05
B05-16	11802029	Toddy's, Harbour Street	Kilcock	Kilcock	House with Shop	05
B05-17	11802024	119 Church Lane	Kilcock	Kilcock	House	05
B05-18	11802018	Whitestown House, Kinnegad Road	Boycetown	Kilcock	House	05
B05-19	11802016	The Shrubbery, Kinnegad Road	Kilcock	Kilcock	House	05
B05-20	11802012	The Lion House, Church Street	Kilcock	Kilcock	House with Public House	05
B05-21	11802002	The Square, Kilcock	Kilcock	Kilcock	House	05
B05-22	11802003	The Square, Kilcock	Kilcock	Kilcock	House	05
B05-24	11802035	Courtown Rd., Kilcock	Kilcock	Kilcock	House	05
B05-25	11802040	Church St., Kilcock	Kilcock	Kilcock	House	05
B05-27	11803090	Finnerty House, Dublin Road, Maynooth	Maynooth	Maynooth	House	05
B05-28	11803091	D.R. Glas, Ryebank House, Dublin Road, Maynooth	Maynooth	Maynooth	House	05
B05-29	11803092	Dublin Road, Maynooth	Maynooth	Maynooth	House	05
B05-30	11803095	Dillon's Row, Maynooth	Maynooth	Maynooth	House	05
B05-31	11803098	Leinster Street, Maynooth	Maynooth	Maynooth	House	05
B05-32	11803104	141 Greenfield Cottages	Greenfield	Maynooth	House	05
B05-33	11803106	Maynooth Railway Station (Former) Straffan Rd (Off)*	Greenfield	Maynooth	House	05
B05-34	11803109	202 Railpark	Railpark	Maynooth	House	05
B06-04		Tower of Confey Castle	Confey		Tower	06
B06-06		Lime Kiln	Railpark		Lime Kiln	06
B06-07		Hedsor House	Blakestown		House	06
B06-08		Ravensdale House and Gates	Ravensdale		House	06
B06-12	11803102	Castle View House, Parson Street	Maynooth	Maynooth	House	06
B07-02	11900701	Kinnafad House	Kinnafad		House	07
B08-01		Carbury Castle	Carbury		Castle	08
B08-12		Dreenan Windmill in ruins	Dreenan		Windmill	08
B08-16		Stable Building opposite Church of Ireland Church	Carbury		Stable	08
B08-17	11900807	Edward Grogan, Carbury	Carbury	Carbury	House	08
B08-18	11900808	Church of Ireland Cottage, Carbury Hill	Carbury	Carbury	House	08
B08-19	11900805	Derrinturn House	Derrinturn	Derrinturn	House	08
B08-20	11900806	Carbury*	Carbury	Carbury	House	08
B08-21	11900811	Carbury Sweep	Ardkill		Thatched House	08
B08-22	11900804	The Turn Inn	Derrinturn	Derrinturn	House with Public House	08
B10-02		Castle	Rathcoffey Demesne		Castle	10
B10-12		Barberstown House	Barberstown		House	10
B10-16	11903805	Corballis House	Corbally		House	10
B10-18	11901004	Barreen Cottage, Barreen Cross Roads, Barreen	Barreen	Kilcock	House	10
B10-19	11901003	Baltracey House	Baltracey (Balaraheen Ed)		House	10
B10-20	11901006	Windgates Villa	Windgates		House	10

* Saint Patrick's - Formerly Roman Catholic Church

* Maynooth Railway Station - Formerly Railway Station Master's House

* Carbury - Former Carbury Rectory

Table 20.1 Record of Protected Structures for County Kildare - *Continued*

Ref. No	NIAH Ref.	Building Address	Townland	Town	Description	OS 6" Map Ref
B11-11		St. Wolstan's House	St. Wolstan's		House	11
B11-12		Stacumny	Stacumny		Lime Kiln	11
B11-13	11805063	Castletown House	Castletown	Celbridge	House and Demesne	11
B11-16		Connolly Folly	Barrogstown West		Obelisk	11
B11-17		Coneyburrow	Coneyburrow		Lime Kiln	11
B11-23	11805062	Kildrought House, Main Street	Celbridge	Celbridge	House	11
B11-24	11805074	Celbridge Abbey, Clane Road	Celbridge Abbey (Celbridge Ed)	Celbridge	Monastery	11
B11-25	11804009	67 Main Street, Leixlip	Leinsterlodge	Leixlip	House	11
B11-26	11805061	Francis & Margaret Finlay Dublin Rd, Donaghcumper	Donaghcumper	Celbridge	House	11
B11-27	11805035	Main Street, Celbridge	Celbridge	Celbridge	House	11
B11-28	11804077	Ralph Square (Off), Leixlip	Leixlip	Leixlip	House	11
B11-29	11804079	'The Stables', Pound Street, Leixlip*	Leixlip	Leixlip	House	11
B11-30	11804070	337 Mill Lane, Leixlip	Leixlip	Leixlip	House	11
B11-31	11804040	Glebe House, Pound Lane, Leixlip	Leixlip	Leixlip	House	11
B11-32	11804039	Ryevale Tavern, Pound Street, Leixlip	Leixlip	Leixlip	House	11
B11-33	11804026	14 Main Street, Leixlip	Leixlip	Leixlip	House	11
B11-34	11805044	Oakley Park (St Raphael's), Church Rd, Celbridge*	Oakleypark	Celbridge	House	11
B11-35	11805045	Celbridge Lodge, Church Rd, Celbridge	Celbridge	Celbridge	House	11
B11-36	11805048	150 Church Rd, Celbridge	Celbridge	Celbridge	House	11
B11-37	11805053	Abbey View, Church Rd, Celbridge	Celbridge	Celbridge	House	11
B11-38	11805055	The Forge, Primrose Hill, Celbridge	Donaghcumper	Celbridge	House	11
B11-39	11805003	Jasmine House, Main Street, Celbridge	Celbridge	Celbridge	House/Guesthouse	11
B11-40	11805034	Landscape House, Main Street, Celbridge	Celbridge	Celbridge	House	11
B11-41	11804073	St Catherine's Park (Liffey Valley House Hotel)*	St Catherine's Park	Leixlip	House	11
B11-42	11804074	Leixlip House Hotel, Captain's Hill, Leixlip*	Newtown (Leixlip Ed)	Leixlip	House	11
B11-43	11804075	Newton Hill House	Newtown (Leixlip Ed)	Leixlip	House	11
B11-44	11804076	Leixlip Bridge Toll House, Leixlip Bridge	Leixlip	Leixlip	House	11
B11-45	11804069	74 Mill Street, Leixlip	Leixlip	Leixlip	House	11
B11-46	11804066	Black Castle, Mill Street, Leixlip	Leixlip	Leixlip	House	11
B11-48	11804029	Mill House, Main Street, Leixlip	Leixlip	Leixlip	House with shops	11
B11-49	11804021	Castle View House, 5 Main Street, Leixlip		Leixlip	House	11
B11-50	11804022	1 Main Street, Leixlip	Leixlip	Leixlip	House	11
B11-51	11804023	Ivy House, Main Street, Leixlip	Leixlip	Leixlip	House	11
B11-52	11804045	Leixlip Castle	Leixlip Demesne	Leixlip	Country House	11
B11-53	11805073	The Abbey National School*	Celbridge Abbey	Celbridge	National School	11
B13-07		Curryhills	Curryhills		Ringfort	13
B13-08		Scrawtown Fort	Curryhills		Fort	13
B13-12	11806004	Binns Bridge	Robertstown	Robertstown	Bridge	13
B13-16		Bonynges Bridge (Healy's Bridge)	Downings South		Bridge	13
B13-22	11807001	Main Street, Prosperous	Curryhills	Prosperous	House	13
B13-23	11806008	Thatched House, Robertstown	Robertstown East	Robertstown	Thatched House	13
B13-24	11807009	The Villa, Prosperous	Curryhills	Prosperous	House	13
B14-17	11901405	Devonshire Bridge*	Kileenmore		Bridge	14
B14-23		Glebe House	Glebe		House	14
B14-24		Lodge Park House	Lodgepark		House	14
B14-27		Millicent Estate Houses	Millicent South		House	14

* 'The Stables' - Former Glebe House Stables

* Leixlip House Hotel - In use as Hotel

* Oakley Park - In use as Hospital

* The Abbey National School - Currently Vacant

* St Catherine's Park - In use as Hotel

* Devonshire Bridge - Canal Bridge

Table 20.1 Record of Protected Structures for County Kildare - *Continued*

Ref. No	NIAH Ref.	Building Address	Townland	Town	Description	OS 6" Map Ref
B14-30		Painestown House	Painestown		House	14
B14-34		Gate Lodge and gates/walls to east of Castlesize	Castlesize			14
B14-35		Prospect House	Prospect		House	14
B14-36	11901401	Welds Thatched House Ballynagappagh	Ballynagappagh (Clane Ed)		Thatched House	14
B14-37	11901404	Thatched House, Millicent South	Millicent South	Clane	Thatched House	14
B14-38	11901407	Straffan*	Clownings (Bodenstown Ed)	Straffan	House	14
B14-39	11809012	Straffan Cottage	Straffan	Straffan	House	14
B14-40	11809010	Bohereen	Bawnoges	Bohereen (Straffan)	House	14
B14-41	11808005	Main Street, Clane	Clane	Clane	House	14
B14-42	11808010	Abbeylands House	Clane	Clane	House	14
B14-44	11809015	Straffan Inn	Straffan	Straffan	House with Public House	14
B15-01		Oughterard	Oughterard		Round Tower and Church	15
B16-01	11901601	Blakefield House	Ballysooghan North		House	16
B17-03		Cappanargid	Cappanargid		Church (in ruins)	17
B17-07	11901706	Feighcullen Church of Ireland Church	Feighcullen		Church of Ireland Church	17
B17-08	11901710	Punchersgrange House	Punchersgrange	Punchersgrange	House	17
B17-09	11901704	Bushfield House	Glenaree		House	17
B17-10	11901707	Feighcullen House	Feighcullen		House	17
B17-11	11901708	Feighcullen Glebe House*	Feighcullen		House	17
B17-12	11810037	Rathangan Lodge, (Bracknagh Rd.) Portarlinton Rd.	Rathangan (Rathangan Ed)	Rathangan	House	17
B17-13	11810036	Oakley House, Portarlinton Rd.	Rathangan (Rathangan Ed)	Rathangan	House	17
B17-14	11810035	Portarlinton Rd.	Rathangan (Rathangan Ed)	Rathangan	House	17
B18-09		Kilmeague	Kilmeague		Terraced House with stone and cobbled pavement	18
B18-13		Morristown Lattin Corn Mill	Yeomanstown		Corn Mill	18
B18-15		Barretstown House	Barretstown		House	18
B18-16	11901813	Hanged Man's	Milltown (Feighcullen Ed)		House with Public House	18
B18-17	11901802	Kilmeage*	Kilmeage	Kilmeage	House	18
B18-18	11901804	Kilmeage Rectory, Rathernan*	Rathernan	Kilmeage	House	18
B18-19	11901815	Thatched House, Donore, Naas	Stickins		Thatched House	18
B18-20	11901817	Thatched House, Thomastown, Naas	Thomastown (Carragh Ed)		Thatched House	18
B18-21	11901818	Thatched House, Thomastown, Naas	Thomastown (Carragh Ed)		Thatched House	18
B18-22	11901810	Old School/ Graveyard House, Milltown	Milltown	Milltown	House	18
B19-15		Johnstown	Johnstown		Standing Stone	19
B19-16	11815022	Killhill	Killhill	Kill	House	19
B19-17	11815017	Kill West	Kill West	Kill	House	19
B19-19	11811033	Sherlockstown Rd.	Sallins	Sallins	House	19
B19-20	11812007	Johnstown Village	Palmerstown	Johnstown	House	19
B19-21	11812011	Ballyowen*	Palmerstown	Johnstown	House	19
B19-22	11812020	Johnstown House	Maudlings	Johnstown House	House	19
B19-23	11812025	Kerdiffstown House*	Kerdiffstown	Johnstown	House	19
B19-24	11811015	Canal View	Sallins	Sallins	House	19
B19-26	11811026	Árd na Gréine	Sallins	Sallins	House	19
B19-27	11815015	R.J. Behan	Kill West	Kill	House	19
B19-28	11815011	Marsville House	Kill West	Kill	House	19
B20-04		Eadestown Fountain (Tickell Memorial)	Eadestown		Fountain	20
B20-08	11813003	Moate House	Rathmore East	Rathmore	House	20

* *Straffan - Former Station Master's House** *Feighcullen Glebe House - Formerly a Glebe House** *Kilmeage - Formerly Kilmeage School** *Kilmeage Rectory - Formerly Kilmeage Rectory** *Ballyowen - Formerly Royal Irish Constabulary Barracks** *Kerdiffstown House - In use as a Nursing Home*

Table 20.1 Record of Protected Structures for County Kildare - *Continued*

Ref. No	NIAH Ref.	Building Address	Townland	Town	Description	OS 6" Map Ref
B20-09	11813005	Rathmore West*	Rathmore West	Rathmore	House	20
B20-10	11813011	Main St., Rathmore West	Rathmore West	Rathmore	House	20
B21-05	11816075	Togher House, Drogheda Street	Monasterevin	Monasterevin	House	21
B21-06	11816080	Togher Lodge, Canal Harbour (Off)	Monasterevin	Monasterevin	House	21
B21-07	11816094*	Canal Harbour	Monasterevin	Monasterevin		21
B21-08	11816095	Canal Harbour (Off)	Monasterevin	Monasterevin	House	21
B21-09	11902101	Thatched House, Oldgrange	Oldgrange (Monasterevin Ed)	Monasterevin	Thatched House	21
B21-10	11902102	Thatched House, Ballykelly	Ballykelly		Thatched House	21
B21-11	11902105	The Lough House, Coolsickin	Coolsickin or Quinsborough		Thatched House	21
B21-12	11902106	Thatched House, Coolsickin	Coolsickin or Quinsborough		Thatched House	21
B21-13	11902107	Thatched House, Mullaghroe Lower	Mullaghroe Lower		Thatched House	21
B21-14	11902110	Thatched House, Mountrice Cross Roads	Mountrice		Thatched House with Shop	21
B21-15	11902112	Thatched House, Ummeras More	Ummeras More		Thatched House	21
B22-15		Church of Ireland Church	Thomastown		Church of Ireland Church	21
B22-18	11817102	Leinster Lodge, Chaplin's Lane	Kildare	Kildare	House	22
B22-19	11817100	Virginia Lodge, Market Square	Kildare	Kildare	House	22
B22-21	11817089	No.19 Fairview Cottages	Kildare		House	22
B22-22	11817086	Kildare	Kildare		House	22
B22-23	11817085	Bungalow One, Dunmurray Rd.	Kildare	Kildare	House	22
B22-24	11817072	The Cottage, Tully Rd.	Kildare	Kildare	House	22
B22-25	11817071	French Furze Rd.	Kildare	Kildare	House	22
B22-26	11817053	Aisling House, Dublin Rd.	Kildare	Kildare	House	22
B22-27	11817033	Abbey View House			House	22
B22-28	11817029	White Abbey Rd	Kildare	Kildare	House	22
B22-29	11817009	Firecastle Lane	Kildare	Kildare	House	22
B22-30	11817006	Vergers House, Market Square*	Kildare	Kildare	House	22
B22-31	11817082	Kilcumney House	Kildare	Kildare	House	22
B22-32	11817074	Valetta House, Tully Rd.	Kildare	Kildare	House	22
B22-33	11817070	Ulster Lodge	Curraghfarm	Kildare	House	22
B22-34	11817069	The Nook	Curraghfarm	Kildare	House	22
B22-36	11817067	Munster Lodge, Leinster Walk	Kildare	Kildare	House	22
B22-37	11817062	Saint Jude's House, Hospital Street	Kildare	Kildare	House	22
B22-38	11817059	Beech Grove House, Dublin Street	Kildare	Kildare	House	22
B22-39	11817052	Lislee House, Dublin Street	Kildare	Kildare	House	22
B22-40	11817038	Kilgowan Lodge, Convent Rd.	Kildare	Kildare	House	22
B22-41	11817028	M.J. McEnerney, White Abbey Rd.	Kildare	Kildare	House with Public House	22
B23-11		Old Connell House	Oldconnell		House	23
B23-14		Athgarvan Lodge	Blackrath		House	23
B23-15	11818050	Bourtree Lodge, Moorefield Rd.	Moorfield	Newbridge	House	23
B23-16	11818019	Charlotte House, Charlotte Street	Greatconnell	Newbridge	House	23
B23-17	11818053	'Tin Roof Cottage', Moorefield Rd., Newbridge	Moorfield	Newbridge	House	23
B23-18	11818013	15 Eyre Street	Greatconnell	Newbridge	House	23
B24-08		Craddockstown West Moat	Craddockstown West		Moat	24
B24-14		Dunstown House	Dunstown		House	24
B24-18		Brownstown House	Brownstown		House	24
B24-20	11902403	Carnalway Rectory*	Carnalway		House	24

* Rathmore West - Former Rectory

* Canal Harbour - Former Railway Station

* Vergers House - Former Church of Ireland Rectory

* Carnalway Rectory - Former Church of Ireland Rectory

Table 20.1 Record of Protected Structures for County Kildare - *Continued*

Ref. No	NIAH Ref.	Building Address	Townland	Town	Description	OS 6" Map Ref
B24-21	11902405	Dunstown Cottage	Dunstown		House	24
B24-22	11902407	Wellfield House	Briencan		House	24
B26-03	11816104	Monasterevin*	Monasterevin	Monasterevin	House	26
B26-04	11816072	Kilrue House, Drogheda Street*	Monasterevin	Monasterevin	House	26
B26-05	11816064	Little Acre House, Dublin St.	Monasterevin	Monasterevin	House	26
B26-06	11816051	The Lodge, Moorabbey, Dublin St.	Monasterevin	Monasterevin	House	26
B26-07	11816020	Monasterevin House, Moore St.	Monasterevin	Monasterevin	House	26
B26-08	11816068	The Ranch, Dublin St.	Monasterevin	Monasterevin	House	26
B26-09	11816047	Grove House, Dublin Street (Off)	Monasterevin	Monasterevin	House	26
B26-10	11816054	Mooreabbey House, Dublin Street (Off)	Monasterevin	Monasterevin	House	26
B26-12	11816042	Finlays, Dublin St.	Monasterevin	Monasterevin	House with Public House	26
B26-13	11816041	Matt Dunne and Associates, Dublin Street	Monasterevin	Monasterevin	House with Commercial Office	26
B26-14	11816028	AVS Services, Main Street	Monasterevin	Monasterevin	House with Shop	26
B26-16	11816069	Brook House/Thomas Boland, Drogheda Street	Monasterevin	Monasterevin	House	26
B26-17	11816071	St. John's, Drogheda Street*	Monasterevin	Monasterevin	House	26
B26-18	11902603	Thatched House, Killeen West, Kildangan	Killeen West		Thatched House	26
B26-19	11902604	Doyle's Thatched House,	Killeen West	Kildangan	Thatched House	26
B27-06		Tully East, Kildare	Tully East, Kildare		Tumulus	27
B27-15	11902702	Thatched House, Clonegath Cross Roads	Clonegath		Thatched House	27
B27-16	11902705	Thatched House, Walterstown (Nurney Ed)	Walterstown (Nurney Ed)		Thatched House	27
B28-07		Ballysax Great	Ballysax Great		Tumulus	28
B28-11		Church of Ireland	Ballysax Great		Church of Ireland Church	28
B28-12	11819035	Newabbey House	Nicholastown (Kilcullen Ed)	Kilcullen	House	28
B28-13	11819028	Logstown Cottage	Logstown	Kilcullen	House	28
B28-14	11819025	Liffey Bank House, Main Street	Kilcullenbridge (Kilcullen Ed)	Kilcullen	House	28
B28-15	11819022	Sunnyside House, Main Street (Off)	Kilcullenbridge (Kilcullen Ed)	Kilcullen	House	28
B28-16	11819009	Kilcullen Credit Union, Main Street	Kilcullenbridge (Kilcullen Ed)	Kilcullen	House	28
B28-17	11902810	Martinstown, Curragh*	Martinstown (Ballyshannon Ed)	Martinstown	House	28
B28-18	11902812	Sunny Hill Cottages	Sunnyhill		House	28
B28-19	11902809	Martinstown Rectory, Martinstown Cross Roads*	Martinstown (Ballyshannon Ed)	Martinstown	House	28
B28-20	11902801	Jockey Hall*	Ballysax Great	The Curragh	House	28
B28-21	11902802	Thornton Lodge*	Ballysax Great	The Curragh	House	28
B28-22		House at Knockaulin	Old Kilcullen		House	28
B29-02		'The Piper's Stones', Broadleas Common	Broadleas Common		Stone Circle	29
B29-03		Grangebeg	Grangebeg		Ring barrow	29
B29-04		Kennycourt	Kennycourt		Site of ancient burials	29
B29-05		Gilltown	Gilltown		Earthworks	29
B29-09		Allingstown	Allingstown		Ring Fort	29
B29-12		Gilltown House	Gilltown		House	29
B29-20		Carnalway Glebe House	Carnalway		House	29
B29-21	11821012	Peacock Cottage	Grangemore	Brannockstown	House	29
B29-22	11821010	'The Farmhouse'	Moorhill	Brannockstown	House	29
B29-23	11821011	Moorhill	Moorhill	Brannockstown	House	29
B29-24	11821001	La Touche Cottage, Brannockstown Crossroads	Grangemore	Brannockstown	House	29
B29-25	11821007	Beechlaw House, Brannockstown Crossroads	Grangemore	Brannockstown	House	29
B29-26	11820029	Dil Cnoc Avon, Plunkett Rd.	Ballymore Eustace East	Ballymore Eustace	House	29

* Monasterevin - In grounds of former Charter School

* Kilrue House - Former Church of Ireland Rectory

* St. John's - Former National School

* Martinstown - Estate Worker's House

* Martinstown Rectory - Former Church of Ireland Rectory

* Jockey Hall - Former Racing Lodge

* Thornton Lodge - Former Stable Block

Table 20.1 Record of Protected Structures for County Kildare - *Continued*

Ref. No	NIAH Ref.	Building Address	Townland	Town	Description	OS 6" Map Ref
B29-27	11820030	Mountcashel Lodge	Ballymore Eustace West	Ballymore Eustace	House	29
B29-29	11820034	Mick Murphy's Bar, Main St.	Ballymore Eustace East	Ballymore Eustace	House with Public House	29
B29-30	11820012	Headon's, Naas Rd.	Ballymore Eustace East	Ballymore Eustace	House with Public House	29
B29-31	11820005	Ballymore Eustace National School	Broadleas Commons	Ballymore Eustace	Building	29
B29-32	11821009	Grangemore	Grangemore	Brannockstown	House	29
B29-33	11820038	Naas Rd., Ballymore Eustace East	Ballymore Eustace East	Ballymore Eustace	House	29
B29-34	11820040	Barrack Street, Ballymore Eustace east	Ballymore Eustace East	Ballymore Eustace	House	29
B29-35	11820027	Ballymore Eustace East	Ballymore Eustace East	Ballymore Eustace	House	29
B29-36	11820026	Ballymore Eustace East	Ballymore Eustace East	Ballymore Eustace	House	29
B29-37	11820025	Halfacre House, Barrack Street, Plunkett Rd.	Ballymore Eustace East	Ballymore Eustace	House	29
B29-38	11820022	Barrack Street	Ballymore Eustace East	Ballymore Eustace	House	29
B29-39	11820009	Chapel St.	Ballymore Eustace East	Ballymore Eustace	House	29
B29-40	11902901	Bishopslane House	Bishopslane (Ballymore Eustace Ed)	Ballymore Eustace	House	29
B31-05	11903106	Youngstown House	Youngstown		House	31
B31-06	11903113	Gorteen House	Gorteen Upper		House	31
B31-10	11903105	Thatched House, Ballynabarna, Athy	Ballynabarna		Thatched House	31
B31-11	11903102	RIC Barracks/ 'Moore's Shop'	Kilberry	Kilberry	House	31
B31-12	11903111	P.Conlan, Boley Crossroads	Boley Little		House with Public House	31
B31-13	11903108	Thatched House, Fontstown Crossroads	Fontstown Lower		Thatched House	31
B31-14	11903104	Kilmead House	Kilmead	Kilmead	House	31
B31-15	11902803	Saint Brigid's National School*	Brownstown Great	Cut Bush	House	31
B32-25	11903213	Thatched House, Killeen, Narraghmore	Killeen		Thatched House	32
B32-26	11903207	Lipstown Upper*	Lipstown Upper	Narraghmore	House	32
B32-27	11903206	Narraghmore Courthouse*	Lipstown Upper	Narraghmore	House	32
B32-28	11903204	Lipstown Upper	Lipstown Upper	Narraghmore	House	32
B32-29	11903202	Thatched House, Oldgrange, Narraghmore	Grange	Oldgrange	Thatched House	32
B32-30	11903210	Grove Villa	Calverstown	Calverstown	House	32
B32-31	11903209	Calverstown Cottage	Carrighill Lower	Calverstown	House	32
B34-02		Castlereban South	Castlereban South		Rheban Moat	34
B34-04	11903401	Moore's Thatched House, Ballyroe	Castlereban North	Athy	Thatched House	34
B34-05	11903402	Rosebank Thatched Cottage, Castlereban South	Castlereban South	Athy	Thatched House	34
B34-06	11903405	Moatstown Corn Mill, Moatstown*	Moatstown		House	34
B35-07	11903502	Tomard	Tomard		House	34
B35-08	11903507	The Grove, Ardscull Crossroads*	Ardscull		House	34
B35-09	11903501	Salisbury House	Salisbury		House	34
B35-10	11903511	Ardeigh House	Ardee	Athy	House	34
B36-20	11822054	Greese Bank House and Chapel	Ballitore		House and Chapel	34
B36-22	11903614	Moone Abbey House	Moone		Country House	34
B36-23	11903610	The Gate House, Moone	Moone		House	34
B36-25	11903609	Scratham View	Moone	Moone	House	34
B36-26	11903613	Park Cottage	Moone		House	34
B36-27	11822049	Peelhall Cottage	Mullamast	Ballitore	House	36
B36-28	11822029	Ballitore House	Ballitore	Ballitore	House	36
B36-29	11822015	Mary Leadbeater House	Ballitore	Ballitore	House	36
B36-30	11822051	Clonragh House	Ballitore	Ballitore	House	36
B36-31	11822061	Ballitore Hill*	Ballitore		House	36

* RIC Barracks/ 'Moore's Shop' - Former RIC Barracks

* Saint Brigid's National School - Former National School

* Lipstown Upper - Former Dispensary

* Narraghmore Courthouse - Former Courthouse

* Moatstown Corn Mill - Former Mill House

* The Grove - Former RIC Barracks

* Ballitore Hill - Former Coach House

Table 20.1 Record of Protected Structures for County Kildare - *Continued*

Ref. No	NIAH Ref.	Building Address	Townland	Town	Description	OS 6" Map Ref
B36-32	11822064	Crookstown House	Crookstown Upper	Crookstown	House	36
B36-33	11822063	Ballitore Hill	Ballitore		House	36
B36-34	11822062	Ballitore Hill	Ballitore		House	36
B36-35	11822027	Ballitore	Ballitore	Ballitore	House	36
B36-36	11822007	The Cottage, Mill Lane	Ballitore	Ballitore	House	36
B36-37	11822006	Ballitore	Ballitore	Ballitore	House	36
B36-39	11822002	Ballitore	Ballitore	Ballitore	House	36
B37-05		Castleroe East	Castleroe East		Earthworks	37
B37-06		Hallahoise	Hallahoise		Ritual Site	37
B37-08		Belan House	Belan Demesne		House (in ruins) including stables and follies	37
B37-17	11903720	Kilkea Parsonage*	Kilkea Lodge Farm	Kilkea	House	37
B37-18	11903722	Kilkea National School*	Kilkea Lodge Farm	Kilkea	House	37
B37-19	11903723	Kilkea Lodge Farm*	Kilkea Lodge Farm	Kilkea	House	37
B37-20	11903703	Dollardstown House	Dollardstown		House	39
B38-06		Hughestown	Hughestown		Earthworks	38
B38-10		Simonstown West	Simonstown West		Standing Stone	38
B38-16	11823038	Crophill House	Crophill	Castledermot	House	38
B39-04		Maganey Bridge	Maganey Lower		Bridge	39
B39-05	11903901	Maganey Catholic Church	Maganey Upper	Maganey	Roman Catholic Church	39
B39-06	11903904	Maganey Railway Station (Former)*	Maganey Lower	Maganey	House	39
B40-01		Old Priory	Graney East		Old Priory or Nunnery	40
B40-08	11904007	Graney House	Graney East		House	40
B40-10	11823006	Douola House, Main Street	Castledermot	Castledermot	House	40
B40-11	11823010	Main Street	Castledermot	Castledermot	House	40
B40-12	11823022	St.James, Church Lane	Castledermot	Castledermot	House	40
B40-13	11823024	Castledermot Parochial House, Abbey Street*	Castledermot	Castledermot	House	40
B40-14	11823025	The Laurels, Main Street	Castledermot	Castledermot	House	40
B40-15	11823030	School House Restaurant, Abbey Street	Castledermot	Castledermot	House	40
B40-16	11823040	High Street	Castledermot	Castledermot	House	40
CL14- 01	11808004	Jones Public House, Main St. Clane.		Clane	Public House	14
CL14- 02	11808005	Doctor's Surgery, Main St. Clane.		Clane	House	14
CL14- 03		The Corner House, Main St. Clane		Clane	Public House	14
CL14- 04		Church of Ireland and grounds, building and boundary, Clane.		Clane	Church	14
CL14- 05		Bellaville House, Prosperous Rd. Clane		Clane		14
CL14- 06	11808008	Convent, Main St. Clane		Clane		14
CL14- 07	11808007	Catholic Church, Main St. Clane		Clane		14
CL14- 08	11808003	Former Garda Barracks, Main St. Clane		Clane		14
CL14- 09	11808013	Alexandra Bridge, Naas Rd. Bridge, Clane.		Clane	Bridge	14
CL14- 10	11808011	House at junction (Village Inn / Jas Manor) North Main St. Clane		Clane	Public House	14
CL14- 11	11808001	Stone Barn, Ballinagappa Rd. Clane		Clane	Stone Barn	14
CL14- 12		Clane Abbey and graveyard, Clane		Clane	Monument	14
CL14- 13		Bullan Stone Monument, Clane.		Clane	Monument	14
CL14- 14		Clane Socket stone of Cross Monument, Clane.		Clane	Monument	14
CL14- 15		Motte Monument, Clane		Clane	Monument	14
CL14- 16	11808010	Abbeylands House, Clane.	Abbeyland	Clane		14
CL14- 17		Stone Bridge at end of Stream Park Bridge, Clane		Clane	Bridge	14
CL14- 18		Large stone bridge at Stream Park Bridge, Clane		Clane	Bridge	14
CL14- 19	11808012	The Presbytery, Main St Building, Clane		Clane		14
CL14- 20	11808006	Old National School, Main St Building, Clane.		Clane		14

* Kilkea Parsonage - Former Church of Ireland Rectory
 * Kilkea National School - Former National School
 * Kilkea Lodge Farm - Estate Worker's House
 * Maganey Railway Station - Former Railway Station

* Castledermot Parochial House - Former Parochial House
 * Clane Abbey and graveyard - Housing estate & road has impacted on setting
 * Motte Monument, Clane - Apartment scheme & road has impacted on setting
 * Abbeylands House, Clane - Housing estate & road has impacted on setting

* The Presbytery, Main St Building, Clane - Former Presbytery
 * Old National School, Main St Building, Clane - Former National School