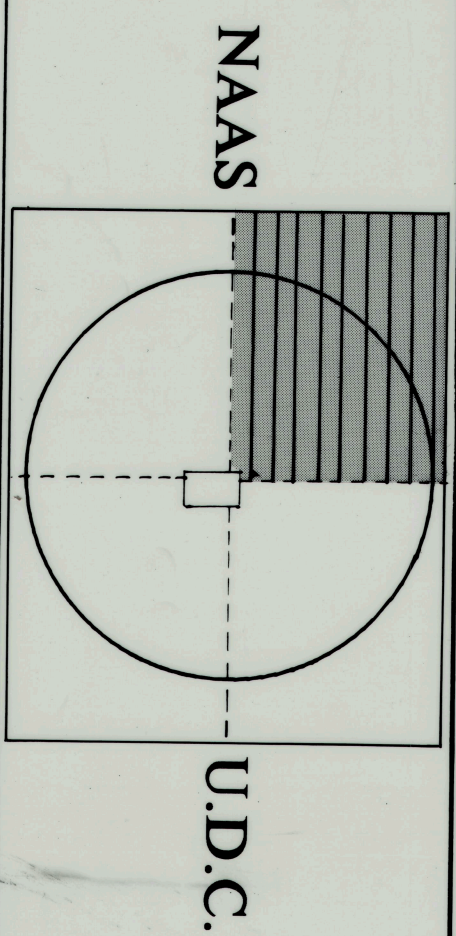


NAAS DEVELOPMENT PLAN 1992

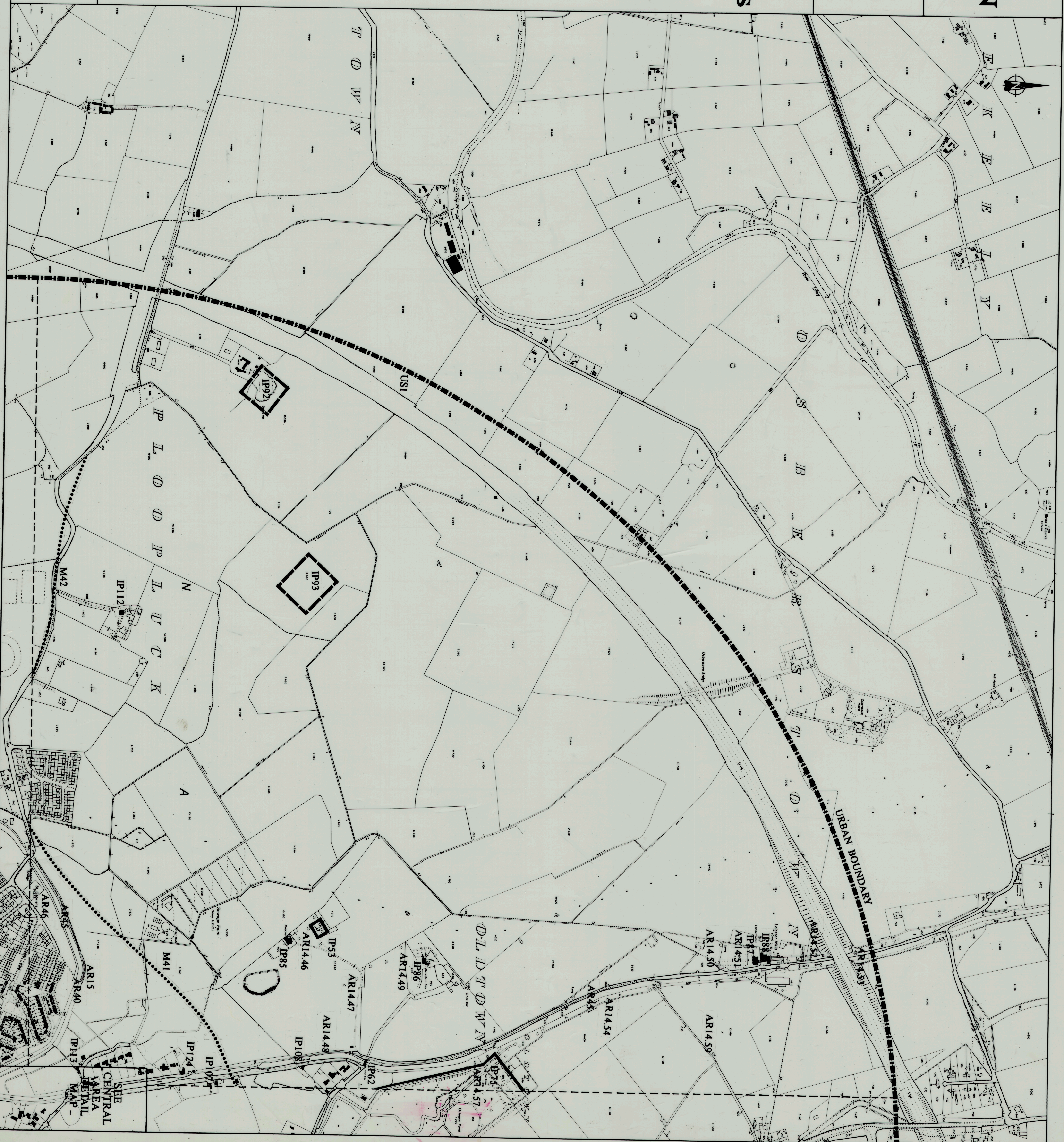


Development & Conservation Objectives

- ERI. EXISTING RESIDENTIAL OBJECTIVES
- NRI. NEW RESIDENTIAL OBJECTIVES
- RCI. RETAIL/COMMERCIAL OBJECTIVES
- CEI. COMMUNITY/EDUCATION OBJECTIVES
- IWI. INDUSTRIAL/WHOLESALE OBJECTIVES
- ARI. AMENITY/RECREATION OBJECTIVES
- USI. UTILITY SERVICES OBJECTIVES
- IP1. ITEMS FOR PRESERVATION OBJECTIVES
- A1. AGRICULTURAL OBJECTIVES
- M1. MOVEMENT OBJECTIVES
- T1. TRANSPORT OBJECTIVES
- AREA OF ARCHAEOLOGICAL POTENTIAL
- ROAD LINE
- ITEMS TO BE PRESERVED

SCALE 1 : 5000

Planning Department



SEE CENTRAL AREA RETAIL MAP