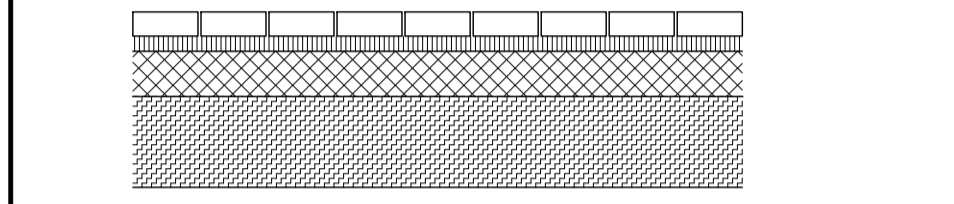


PERMEABLE PAVING CONSTRUCTION

80mm PERMEABLE PAVING CONCRETE BLOCK TO BS EN 1338 & ARCHITECTS SPECIFICATION & APPROVAL & LAYING PATTERN ON
 LAYING MATERIAL & JOINTING TO MANUFACTURERS SPECIFICATION (TYPICALLY TYPE 2/6.3 CC 80/20 TO IS EN 13342) ON
 150mm HYDRAULICALLY BOUND COARSE GRADED AGGREGATE TO BS EN14227-1 ON
 300mm COARSE GRADED AGGREGATE, 4mm to 20mm TO IS EN 1342 TO MANUFACTURERS RECOMMENDATIONS ON
 GEGRID (AS THRACE GROUP T22 OR SIMILAR APPROVED) TO CL 609 (NRA) (CGR'S ARE TO BE CONFIRMED)

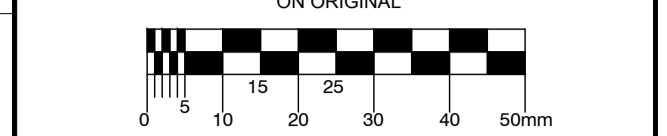


PERMEABLE PAVING CONSTRUCTION
SCALE 1:25

Breakdown of Shared Parking Between KCC Overflow & MERITS Building

	No. of existing spaces lost within site boundary	No. of spaces proposed
KCC overflow car park	36	19
Relocated KCC spaces into new car park		17
MERITS : Total permitted is 55 spaces		
MERITS car park standard spaces		46
MERITS car park accessible spaces at 5%		3
MERITS car park charge spaces at 10%		6
Total Proposed New Parking Spaces		91

© COPYRIGHT OF THIS DRAWING IS RESERVED BY DBFL CONSULTING ENGINEERS. NO PART SHALL BE REPRODUCED OR TRANSMITTED WITHOUT THEIR WRITTEN PERMISSION.



NOTES:
SERVICES LEGEND

- SITE BOUNDARY
- PROPOSED PERMEABLE PAVEMENT EXTENTS
- PROPOSED BITUMEN SURFACE TO MATCH EXISTING
- PROPOSED REINFORCED GRASS
- PROPOSED FOOTPATH
- PROPOSED LANDSCAPING
- PROPOSED DROP KERB
- PROPOSED TACTILE PAVING
- ROAD LEVEL
- ROAD GRADIENT
- No. OF CAR PARKING BAYS
- ELECTRICAL PARKING BAY
- MOTORCYCLE PARKING BAY
- PROPOSED ENTRANCE/ACCESS
- PROPOSED PALADIN FENCE (1.99m HIGH)
- EXISTING CAR PARKING SPACE TO BE REMOVED
- KCC RELOCATED PARKING
- MERITS PARKING
- BICYCLE PARKING

ORDNANCE SURVEY IRELAND LICENCE
No EN 0017918
© ORDNANCE SURVEY IRELAND
GOVERNMENT OF IRELAND

KILDARE COUNTY COUNCIL OFFICE

BB32 Fire Appliance
Overall Length 6800mm
Overall Body Height 2500mm
Max Spay Growth Clearance 4250mm
Max Track Width 2500mm
Lock-to-lock time 7-910m
Urg to Curbs Turning Radius

REV. DATE	DESCRIPTION	PPK	MMC
A	06/02/18 GENERAL AMENDMENTS		
PLANNING			
DESIGNED	DATE	PREPARED	CHECKED
MMK	JAN 2018	PPK	KJS

DBFL Consulting Engineers
 Dublin Office: Ormond House, Upper Ormond Quay, Dublin 7, Ireland. Phone: +353 1 400 4000 Fax: +353 1 400 4050
 Waterford Office: Unit 2, The Crandery, 1-2 O'Connell Street, Waterford, Ireland. Phone: +353 51 300 500 Fax: +353 51 844 913

PROJECT
MID EASTERN REGIONAL INNOVATION THINK SPACE M.E.R.I.T.S

DRG. TITLE
ROAD LAYOUT

CLIENT
KILDARE COUNTY COUNCIL

SCALE	1:250 @A1	FILE REF.	170225-2000
DRG. NO.	170225-2000		A