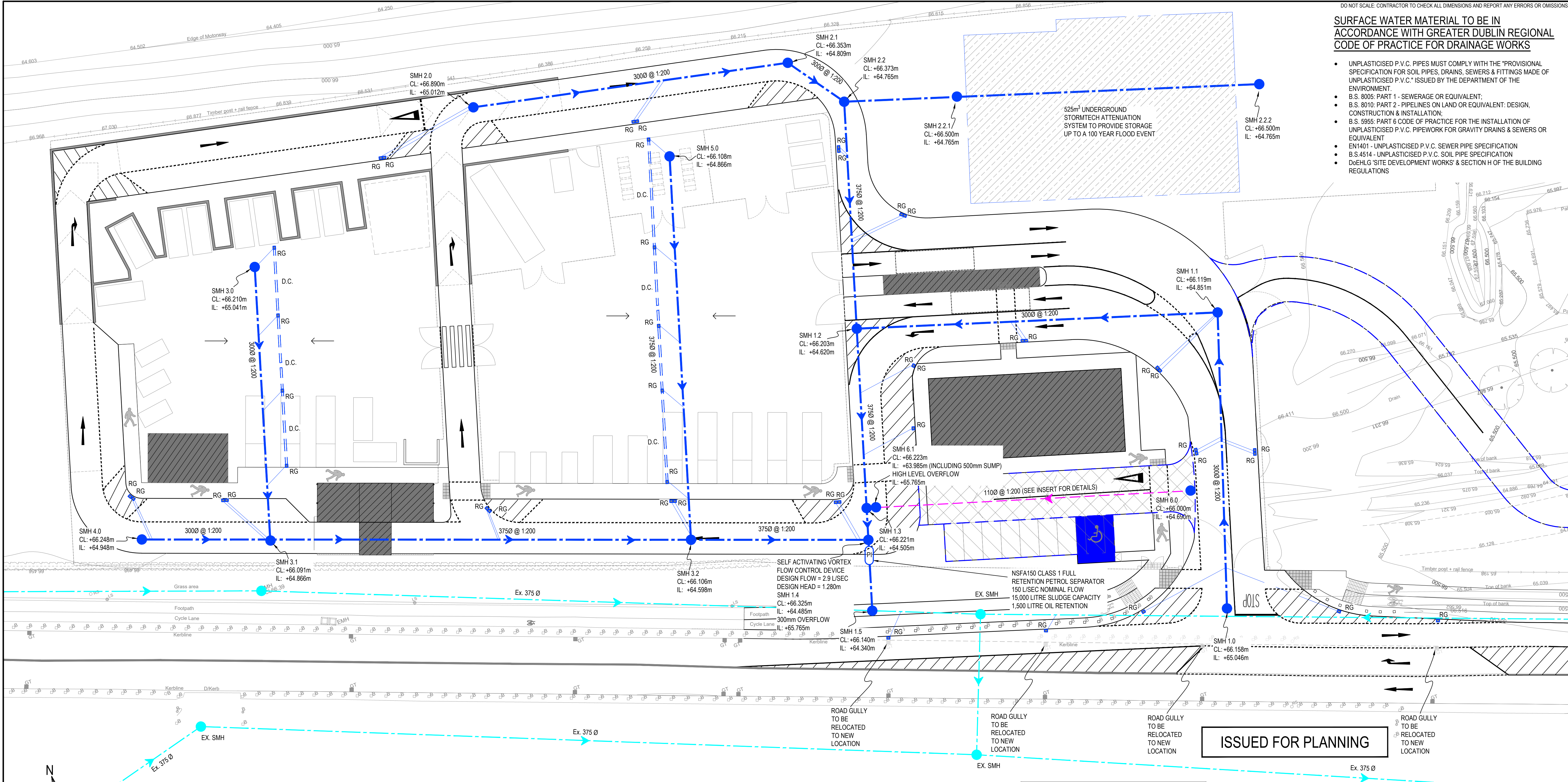


DO NOT SCALE: CONTRACTOR TO CHECK ALL DIMENSIONS AND REPORT ANY ERRORS OR OMISSIONS

SURFACE WATER MATERIAL TO BE IN ACCORDANCE WITH GREATER DUBLIN REGIONAL CODE OF PRACTICE FOR DRAINAGE WORKS

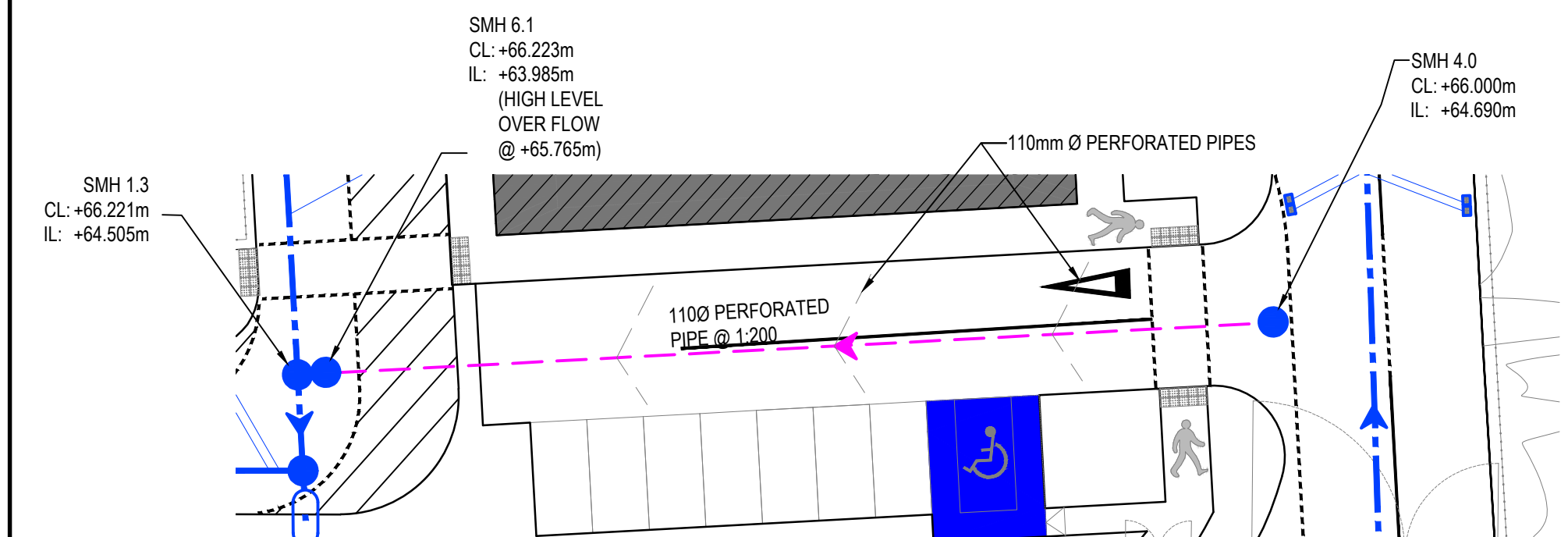
- UNPLASTICISED P.V.C. PIPES MUST COMPLY WITH THE 'PROVISIONAL SPECIFICATION FOR SOIL PIPES, DRAINS, SEWERS & FITTINGS MADE OF UNPLASTICISED P.V.C.' ISSUED BY THE DEPARTMENT OF THE ENVIRONMENT.
- B.S. 8005: PART 1 - SEWERAGE OR EQUIVALENT;
- B.S. 8010: PART 2 - PIPELINES ON LAND OR EQUIVALENT: DESIGN, CONSTRUCTION & INSTALLATION;
- B.S. 9955: PART 6 CODE OF PRACTICE FOR THE INSTALLATION OF UNPLASTICISED P.V.C. PIPEWORK FOR GRAVITY DRAINS & SEWERS OR EQUIVALENT
- EN1401 - UNPLASTICISED P.V.C. SEWER PIPE SPECIFICATION
- B.S.4514 - UNPLASTICISED P.V.C. SOIL PIPE SPECIFICATION
- DoEHLG 'SITE DEVELOPMENT WORKS' & SECTION H OF THE BUILDING REGULATIONS



ISSUED FOR PLANNING

0 2.5 5 7.5 10 12.5 m
SCALE 1:250 @ A1; 1:500 @ A3

PROPOSED SURFACE WATER DRAINAGE LAYOUT SCALE 1:250



PROPOSED SURFACE WATER CARPARK DRAINAGE LAYOUT SCALE 1:250

- NOTE 1:** MANHOLE COVER LEVELS ARE APPROXIMATE. ACTUAL OVER LEVELS SHOULD MATCH SURROUNDING FINISHED GROUND LEVELS U.N.O.
- NOTE 2:** PIPES WITH LESS COVER THAN
- 600mm FOR GRASSED AREAS
 - 900mm FOR FOOTPATHS
 - 1200mm FOR ROADS
- NEED TO BE ENCASED IN A MIN. 150mm THK. CONCRETE SURROUND
- NOTE 3:** FOR TYPICAL DRAINAGE DETAIL REFER TO DRAWING C-010
- NOTE 4:** ALL 110mm PVC SEWER PIPES TO HAVE A MINIMUM GRADIENT OF 1 IN 60
- NOTE 5:** REMAINING OPEN ENDS OF EXISTING SEWER PIPE FOLLOWING DIVERSIONS / DECOMMISSIONING ARE TO BE PLUGGED WITH CONCRETE

NOTES:

- REFER TO SURVEY DRAWINGS FOR EXISTING SERVICES LAYOUTS AND MANHOLE INFORMATION
- DECOMMISSIONING & REMOVAL OF SERVICES TO TAKE PLACE FOLLOWING DEANTING OF SCHOOL FROM EFFECTED BUILDINGS U.N.O.
- WORKS TAKING PLACE OUTSIDE OF DESIGNATED CONTRACTORS SITE ARE TO BE CARRIED OUT DURING SCHOOL HOLIDAY PERIODS
- ALL EXISTING SURFACES TO BE REINSTATED FOLLOWING DIVERSION OF SERVICES/CONSTRUCTION OF NEW SERVICES

PIPE SIZES:

- ALL PIPE RUNS BETWEEN MANHOLES TO BE 2250 U.N.O
- ALL PIPE RUNS BETWEEN INSPECTION CHAMBERS TO BE 1500 U.N.O
- ALL PIPE RUNS BETWEEN AJs AND FROM RAINWATER PIPES OR GULLIES TO BE 1100 U.N.O

LEGEND

- EXISTING STORM WATER SEWER
- EXISTING STORM WATER SEWER (TO BE REMOVED)
- PROPOSED STORM WATER SEWER
- PROPOSED CHANNEL DRAIN
- PROPOSED INFILTRATION TRENCH
- PROPOSED LAND DRAIN
- SMH PROPOSED STORM WATER MH
- SIC PROPOSED INSPECTION CHAMBER
- RG PROPOSED ROAD GULLY
- SAJ PROPOSED STORM WATER AJ
- RWP PROPOSED RAINWATER PIPE
- PERMEABLE PAVING FOR CAR-PARKING
- PERMEABLE PAVING FOR ROAD
- REINFORCED GRASS ROADWAY FOR ACCESS TO COMPOUND

S2.P04	ISSUED FOR PLANNING	22.02.2019	KD	PD
S2.P03	ISSUED FOR INFORMATION	17.12.2018	KD	PD
S2.P02	ISSUED FOR INFORMATION	12.12.2018	KD	PD
S2.P01	ISSUED FOR INFORMATION	05.11.2018	KD	PD
Rev.	Note	Date	Drawn	Check

DONNACHADH O'BRIEN
& ASSOCIATES CONSULTING ENGINEERS

UNIT 5C
ELM HOUSE
MILLENNIUM PARK
NAAS
CO. KILDARE

PHONE
+353 45 984 042
INFO@DOBRIEN-ENGINEERS.IE
WWW.DOBRIEN-ENGINEERS.IE

Client: KILDARE COUNTY COUNCIL
Comhairle Chontae Chill Dara
MR. JOE BOLAND, DIRECTOR OF SERVICES
WATER SERVICES & ENVIRONMENT

Project: PROPOSED CIVIC AMENITY CENTRE
& WASTE TRANSFER FACILITY AT KILMACREDDOCK UPPER,
CASTLETOWN, CELBRIDGE, Co. KILDARE

Drawing Title: PROPOSED SURFACE WATER DRAINAGE LAYOUT

Drawn By: KD	Checked By: PD	Approved By: DOB	Date: FEB' 2017	Scale: 1:250	Sheet Size: A1
Project Number: DOBA1701	Drawing Number: CIVAMY-DOB- XX-SI- DR-C-0020	Status Code: S2	Rev Number: P04		