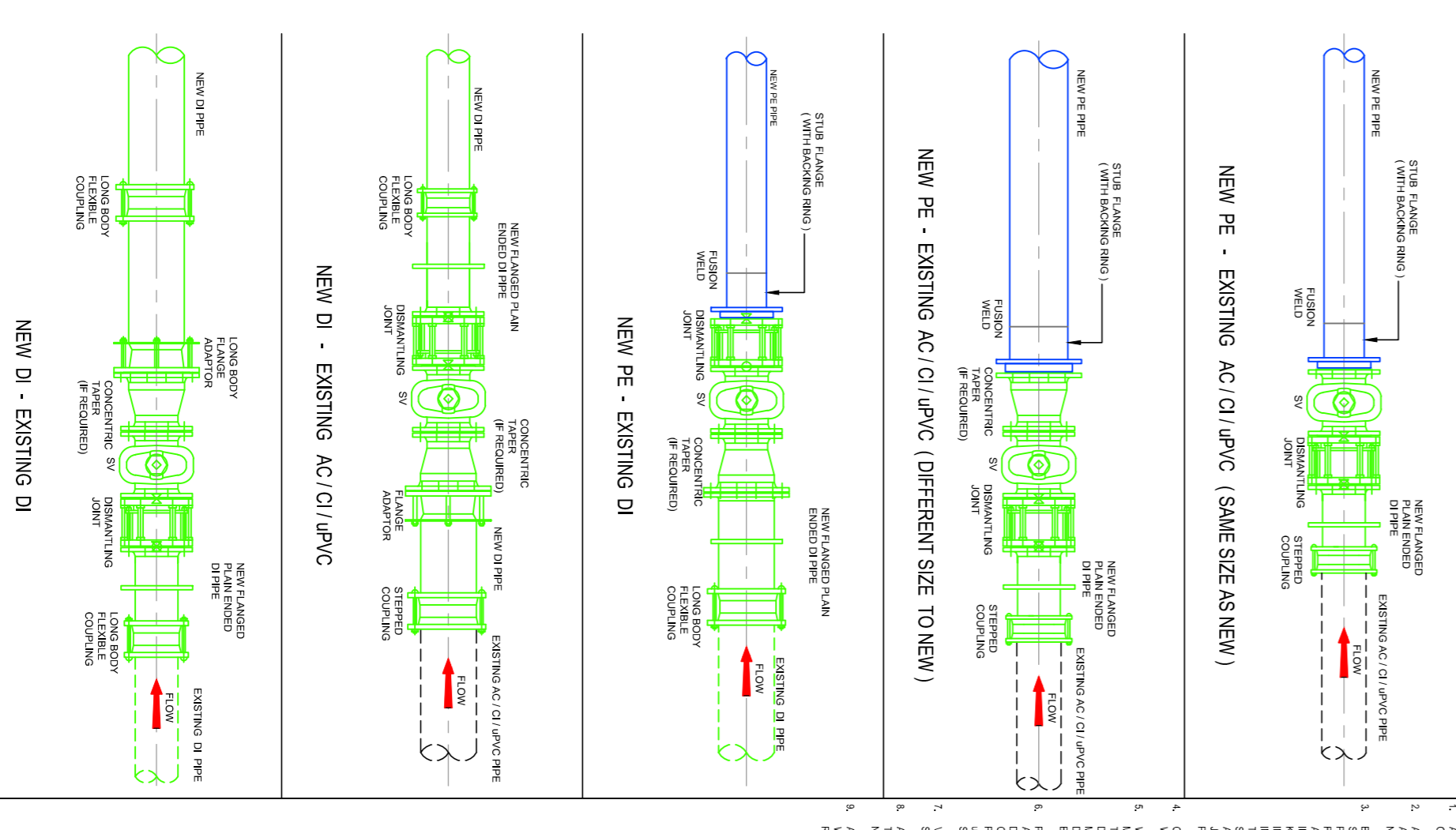
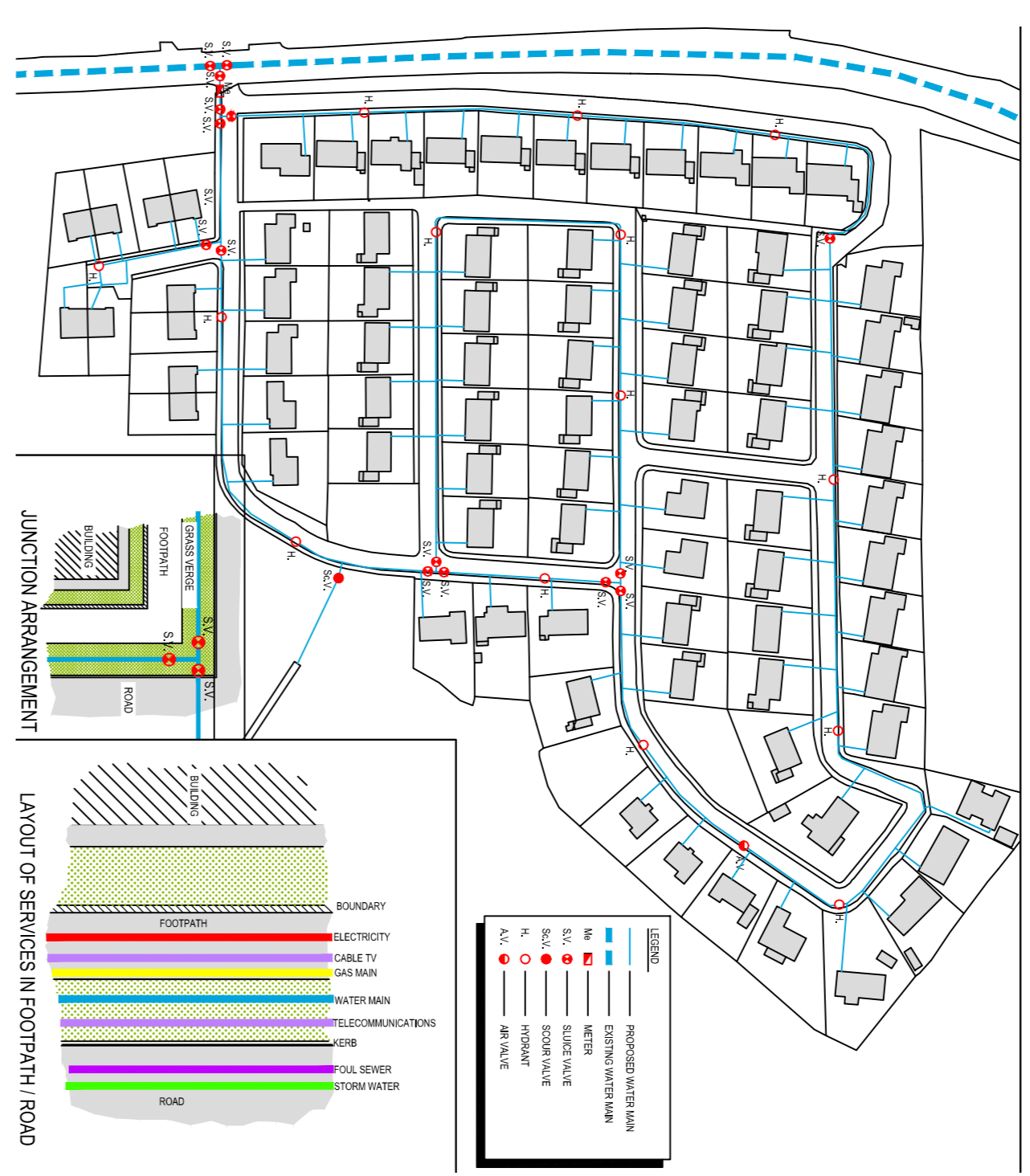


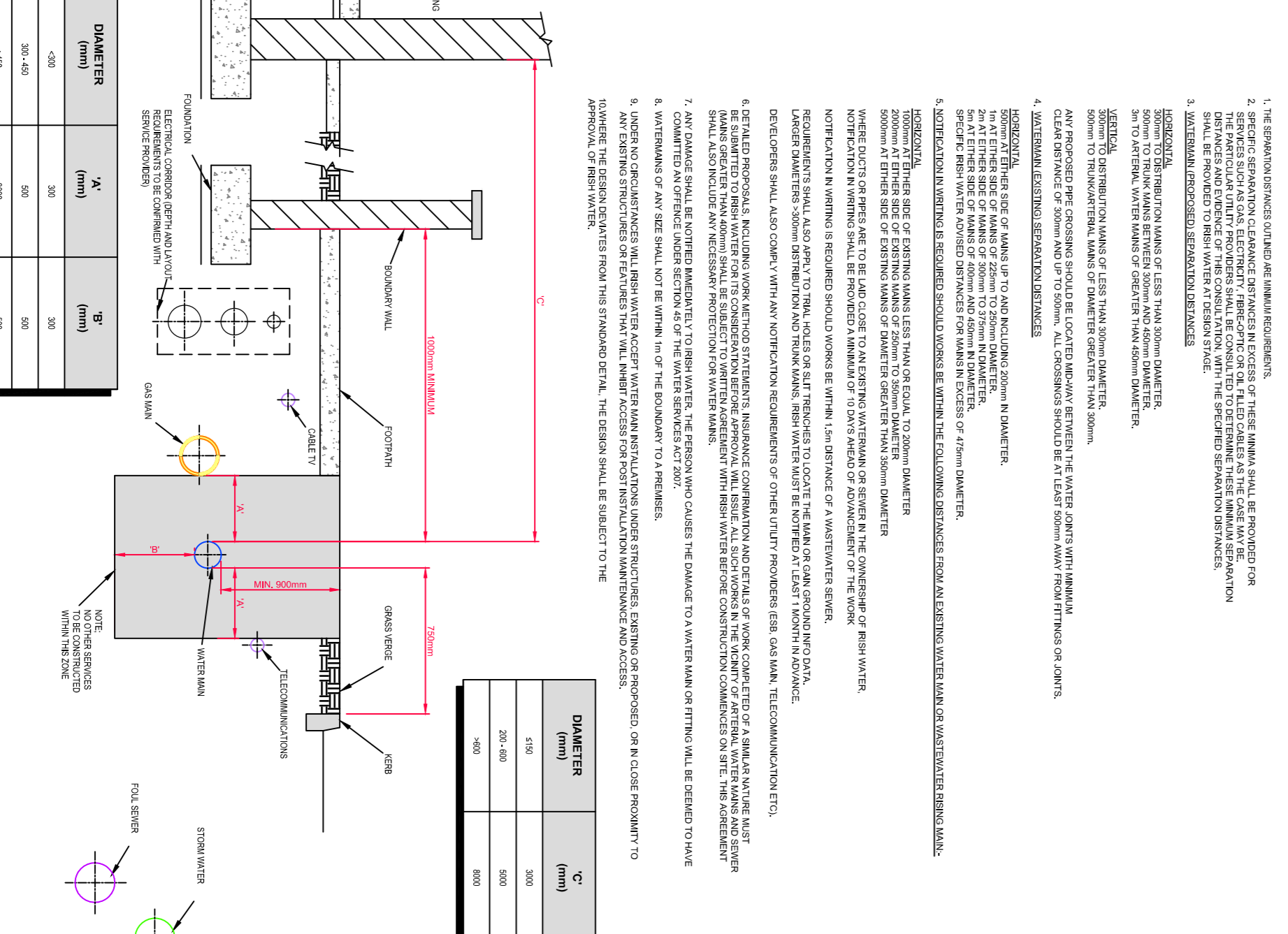
TYPICAL IRISH WATER DETAIL FOR WATER SERVICE CONNECTION RESPONSIBILITY - NTS



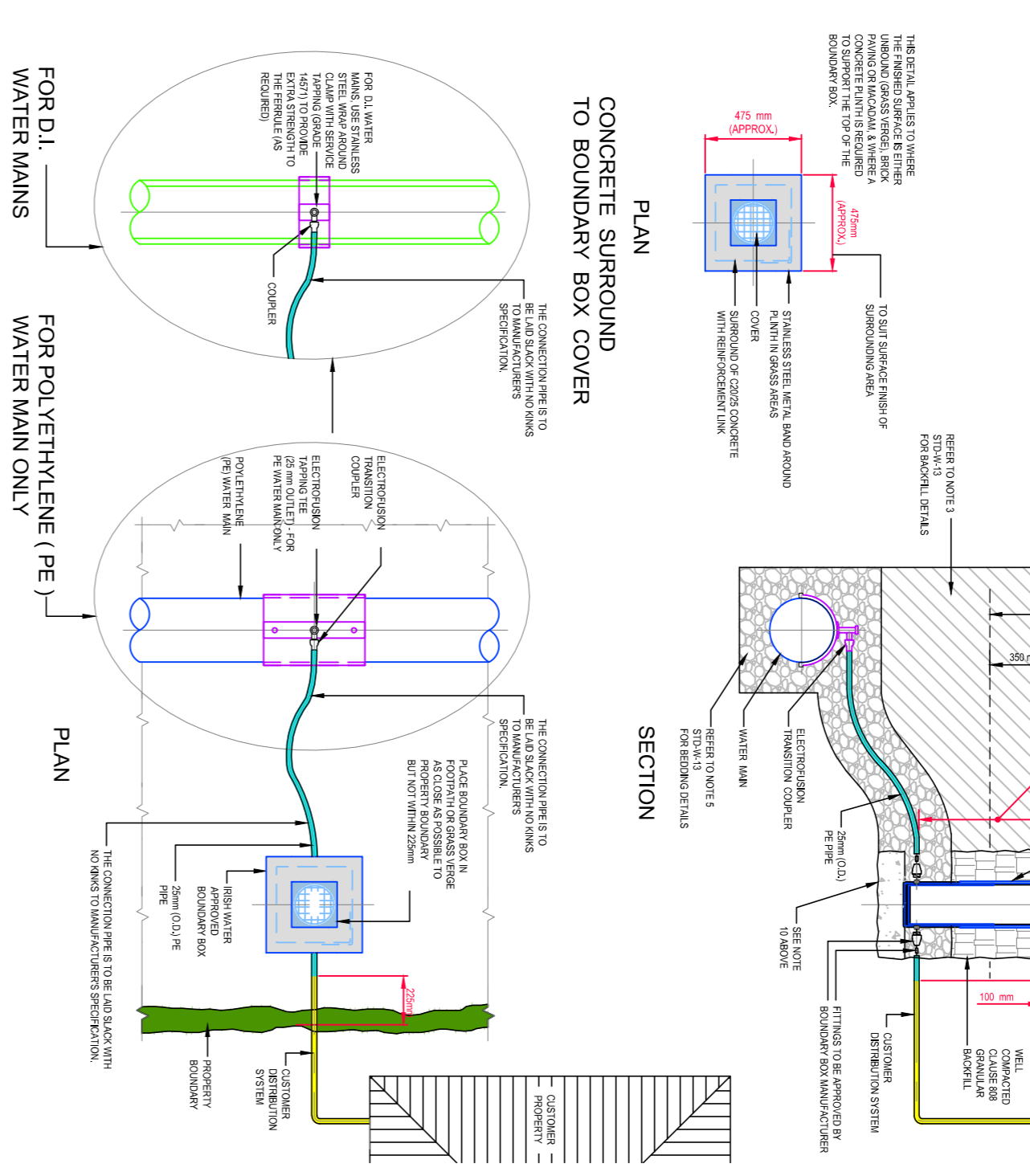
1. THE SERVICE PIPE SHALL BE INSTALLED IN ACCORDANCE WITH THE IWSM REGULATIONS.
2. THE SERVICE PIPE SHALL BE INSTALLED IN ACCORDANCE WITH THE IWSM REGULATIONS.
3. THE SERVICE PIPE SHALL BE INSTALLED IN ACCORDANCE WITH THE IWSM REGULATIONS.
4. THE SERVICE PIPE SHALL BE INSTALLED IN ACCORDANCE WITH THE IWSM REGULATIONS.
5. THE SERVICE PIPE SHALL BE INSTALLED IN ACCORDANCE WITH THE IWSM REGULATIONS.
6. THE SERVICE PIPE SHALL BE INSTALLED IN ACCORDANCE WITH THE IWSM REGULATIONS.
7. THE SERVICE PIPE SHALL BE INSTALLED IN ACCORDANCE WITH THE IWSM REGULATIONS.
8. THE SERVICE PIPE SHALL BE INSTALLED IN ACCORDANCE WITH THE IWSM REGULATIONS.
9. THE SERVICE PIPE SHALL BE INSTALLED IN ACCORDANCE WITH THE IWSM REGULATIONS.
10. THE SERVICE PIPE SHALL BE INSTALLED IN ACCORDANCE WITH THE IWSM REGULATIONS.
11. THE SERVICE PIPE SHALL BE INSTALLED IN ACCORDANCE WITH THE IWSM REGULATIONS.
12. THE SERVICE PIPE SHALL BE INSTALLED IN ACCORDANCE WITH THE IWSM REGULATIONS.
13. THE SERVICE PIPE SHALL BE INSTALLED IN ACCORDANCE WITH THE IWSM REGULATIONS.
14. THE SERVICE PIPE SHALL BE INSTALLED IN ACCORDANCE WITH THE IWSM REGULATIONS.



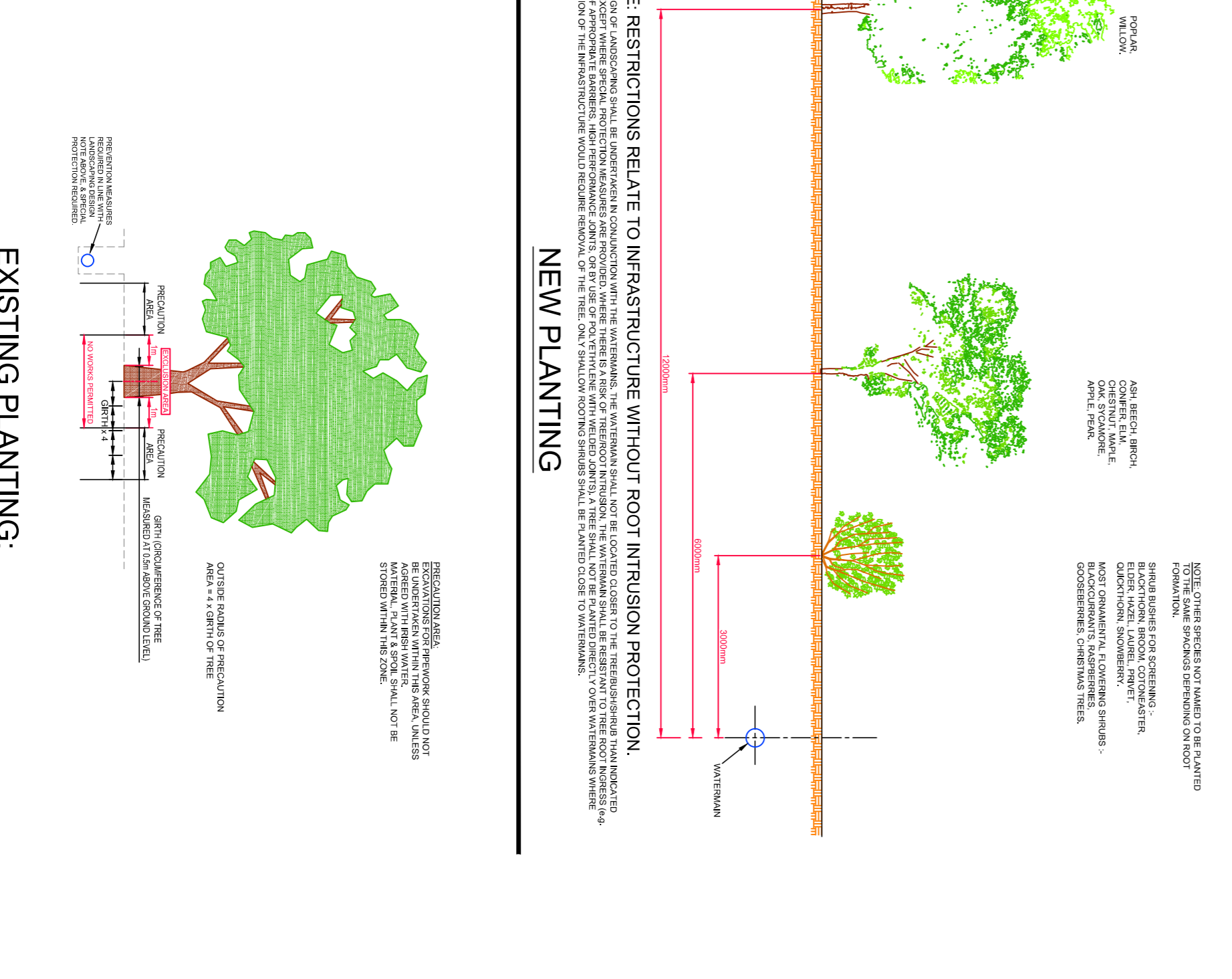
TYPICAL IRISH WATER DETAIL FOR TYPICAL WATERMAIN LAYOUT WITHIN DEVELOPMENTS - NTS



1. THE SERVICE PIPE SHALL BE INSTALLED IN ACCORDANCE WITH THE IWSM REGULATIONS.
2. THE SERVICE PIPE SHALL BE INSTALLED IN ACCORDANCE WITH THE IWSM REGULATIONS.
3. THE SERVICE PIPE SHALL BE INSTALLED IN ACCORDANCE WITH THE IWSM REGULATIONS.
4. THE SERVICE PIPE SHALL BE INSTALLED IN ACCORDANCE WITH THE IWSM REGULATIONS.
5. THE SERVICE PIPE SHALL BE INSTALLED IN ACCORDANCE WITH THE IWSM REGULATIONS.
6. THE SERVICE PIPE SHALL BE INSTALLED IN ACCORDANCE WITH THE IWSM REGULATIONS.
7. THE SERVICE PIPE SHALL BE INSTALLED IN ACCORDANCE WITH THE IWSM REGULATIONS.
8. THE SERVICE PIPE SHALL BE INSTALLED IN ACCORDANCE WITH THE IWSM REGULATIONS.
9. THE SERVICE PIPE SHALL BE INSTALLED IN ACCORDANCE WITH THE IWSM REGULATIONS.
10. THE SERVICE PIPE SHALL BE INSTALLED IN ACCORDANCE WITH THE IWSM REGULATIONS.
11. THE SERVICE PIPE SHALL BE INSTALLED IN ACCORDANCE WITH THE IWSM REGULATIONS.
12. THE SERVICE PIPE SHALL BE INSTALLED IN ACCORDANCE WITH THE IWSM REGULATIONS.
13. THE SERVICE PIPE SHALL BE INSTALLED IN ACCORDANCE WITH THE IWSM REGULATIONS.
14. THE SERVICE PIPE SHALL BE INSTALLED IN ACCORDANCE WITH THE IWSM REGULATIONS.



TYPICAL IRISH WATER DETAIL FOR CUSTOMER CONNECTION & BOUNDARY BOX - NTS



Rev	Note	Date	Drawn	Check
S2.P02	ISSUED FOR PLANNING	22.02.19	KD	PD
S2.P01	ISSUED FOR INFORMATION	05.11.18	KD	PD

Client:	KILDARE COUNTY COUNCIL	Unit 3C ELM HOUSE MILLERSBURG PARK NAAS CO. KILDARE	Phone +353 45 884 012
Project:	PROPOSED CIVIC AMENITY CENTRE AT KILMACREDDOCK	Donnachadh O'Brien & Associates Consulting Engineers CO. KILDARE	www.donnachadhobrien.ie
Drawing Title:	TYPICAL WATERMAIN DETAILS SHEET 1 OF 3		
Drawn By:	Checked By:	Approved By:	Date:
Project Number:	DOB1701		

FOR INFORMATION ONLY