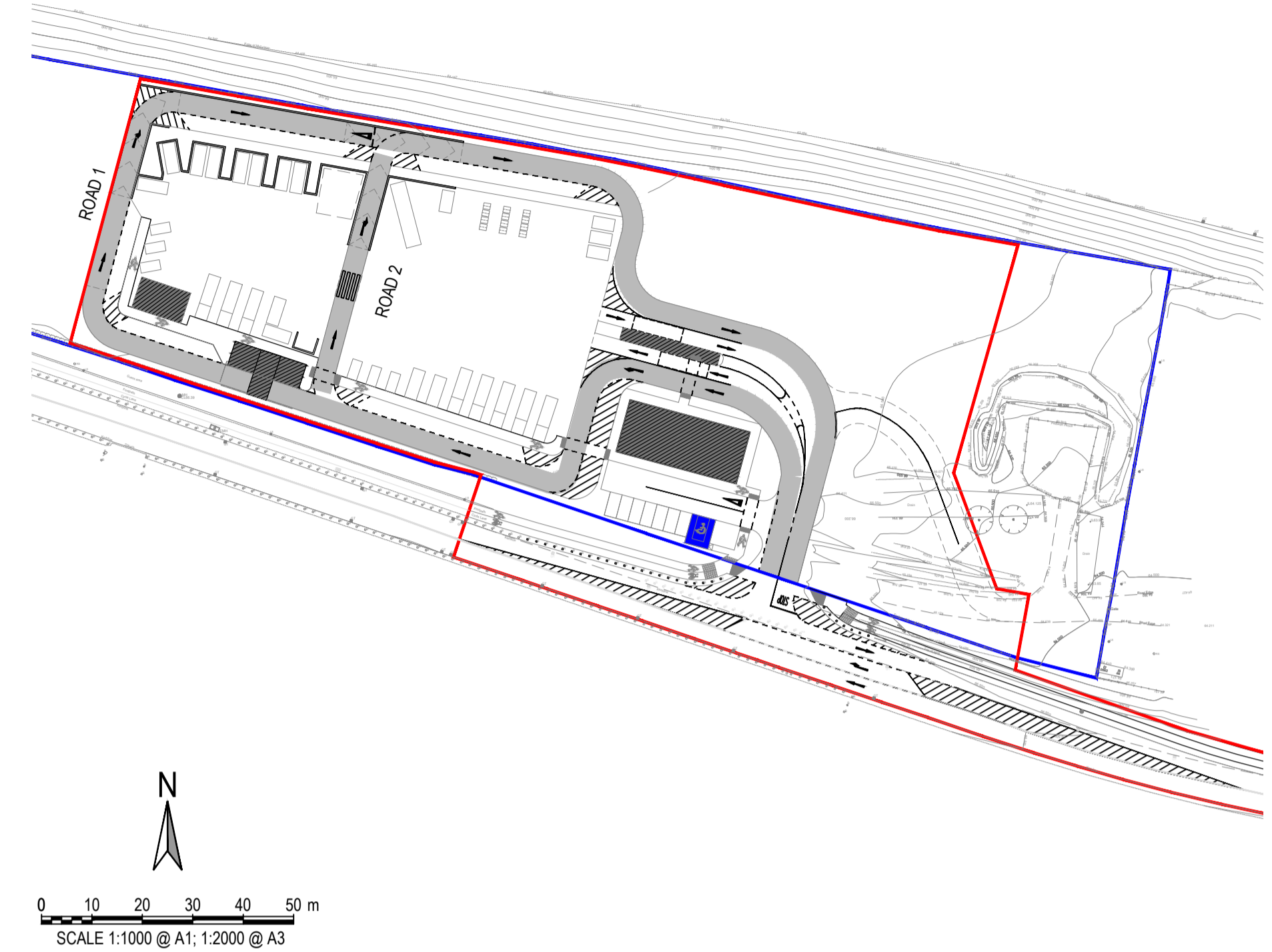


| | | | | | | | | | | | |
|---|---|--|--|--|--|--|--|--|--|--|--|
| MANHOLE COVER LEVELS APPROX (m) | 68.21 | | | | | | | | | | 68.89 |
| FOUL WATER SEWER INVERT LEVELS (m) | 68.207 | | | | | | | | | | 68.89 |
| SURFACE WATER SEWER INVERT LEVELS (m) | 67.615 | | | | | | | | | | 68.89 |
| ROAD 2 (H)1:500, (V)1:100 | | | | | | | | | | | |
| CHAINAGE ON CENTRELINE (m) | 0.000, 2.000, 10.000, 20.000, 30.000, 32.960 | | | | | | | | | | 40.000, 50.000, 52.895, 64.895 |
| LEVELS ON CENTRELINE OF CARRIAGEWAY (m) | 68.203, 68.153, 68.205, 68.270 | | | | | | | | | | 68.335, 68.350, 68.361, 68.359, 67.718, 67.088 |
| LEVELS ON LEFT HAND CHANNEL (m) | 68.155, 68.255 | | | | | | | | | | 68.320, 68.358, 68.400, 68.551, 68.570 |
| LEVELS ON RIGHT HAND CHANNEL (m) | 68.220 | | | | | | | | | | 68.370, 68.870 |
| VERTICAL DESIGN ON CARRIAGEWAY CENTRELINE | GRADIENT 0.650% (1 IN 153.825) LENGTH = 30.390M | | | | | | | | | | GRADIENT 3.285% (1 IN 30.445) LENGTH = 20.325M |
| HORIZONTAL DESIGN ON CARRIAGEWAY CENTRELINE | STRAIGHT LENGTH = 50.685M | | | | | | | | | | |
| EXISTING LEVELS (m) | 68.262, 68.308, 68.348 | | | | | | | | | | 68.420, 68.391, 68.403, 68.520, 68.504, 68.506, 68.551, 68.547, 68.604, 68.602 |



PROPOSED SITE KEYPLAN
SCALE 1:1000

- NOTE 1: MANHOLE COVER LEVELS ARE APPROXIMATE. ACTUAL COVER LEVELS SHOULD MATCH SURROUNDING FINISHED GROUND LEVELS U.N.O.
- NOTE 2: PIPES WITH LESS COVER THAN:
- 600mm FOR GRASSED AREAS
 - 750mm FOR FOOTPATHS
 - 900mm FOR ROADS NEED TO BE ENCASED IN A MIN. 150mm THK. CONCRETE SURROUND
- NOTE 3: PIPE MATERIALS TO COMPLY WITH SECTION 3.13 OF THE CoP FOR WASTEWATER INFRASTRUCTURE DOCUMENT IW-CS-5030-03

- NOTES:**
- FOR STANDARD DOBA NOTES REFER TO DRAWING 1701-DOB-XX-SI-DR-S-0001 & S-0002
 - REFER TO ARCHITECTS DRAWINGS FOR ALL SITE & APPLICATION BOUNDARIES
 - THIS DRAWING IS TO BE READ IN CONJUNCTION WITH ALL OTHER RELEVANT ARCHITECTS & ENGINEERS DRAWINGS AND SPECIFICATIONS.
 - USE FIGURED DIMENSIONS ONLY. DO NOT SCALE
 - REFER TO SURVEY DRAWINGS FOR EXISTING SERVICES LAYOUTS AND MANHOLE INFORMATION
 - ALL EXISTING SURFACES TO BE REINSTATED FOLLOWING DIVERSION OF SERVICES/CONSTRUCTION OF NEW SERVICES
 - THE CONTRACTOR SHALL VERIFY ALL DIMENSIONS AND LEVELS WITH ARCHITECTURAL DRAWINGS PRIOR TO START OF CONSTRUCTION. ANY DISCREPANCIES TO BE NOTIFIED TO THE ENGINEER & ARCHITECT FOR RESOLUTION
 - CONTRACTOR TO ENSURE ALL WATER & WASTEWATER RELATED WORKS ARE IN ACCORDANCE WITH THE IRISH WATER WATER INFRASTRUCTURE & WASTEWATER INFRASTRUCTURE CODE OF PRACTICE & STANDARD DETAILS DOCUMENTS
 - TESTING OF ALL GRAVITY SEWERS AND MANHOLES TO BE IN ACCORDANCE WITH IRISH WATER CODE OF PRACTICE FOR WASTEWATER INFRASTRUCTURE SECTION 4.10 TESTING OF GRAVITY SEWERS & MANHOLES

ISSUED FOR PLANNING

| | | | | |
|--------|------------------------|------------|-------|-------|
| S2.P03 | ISSUED FOR PLANNING | 22.02.2019 | KD | PD |
| S2.P02 | ISSUED FOR INFORMATION | 17.12.2018 | KD | PD |
| S2.P01 | ISSUED FOR INFORMATION | 05.11.2018 | KD | PD |
| Rev. | Note | Date | Drawn | Check |

DONNACHADH O'BRIEN & ASSOCIATES CONSULTING ENGINEERS

UNIT 5C
ELM HOUSE
MILLENNIUM PARK
NAAS
CO. KILDARE

PHONE
+353 45 984 042
INFO@DOBRIEN-ENGINEERS.IE
WWW.DOBRIEN-ENGINEERS.IE

Client: **KILDARE COUNTY COUNCIL**
Comhairle Chontae Chill Dara
MR. JOE BOLAND, DIRECTOR OF SERVICES
WATER SERVICES & ENVIRONMENT



Project: **PROPOSED CIVIC AMENITY CENTRE & WASTE TRANSFER FACILITY AT KILMACREDDOCK UPPER, CASTLETOWN, CELBRIDGE, Co. KILDARE**

Drawing Title: **PROPOSED ROAD LONG SECS WITH SW & FOUL DRAINAGE SH2**

| | | | | | |
|-----------------------------|---|---------------------|--------------------|-----------------|-------------------|
| Drawn By: KD | Checked By: PD | Approved By: DOB | Date: FEB' 2017 | Scale: 1:250 | Sheet Size: A1 |
| Project Number: DOBA1701 | Drawing Number: CIVAMY-DOB-XX-SI-DR-C-0141 | Status Code: S2 | Rev Number: P03 | | |