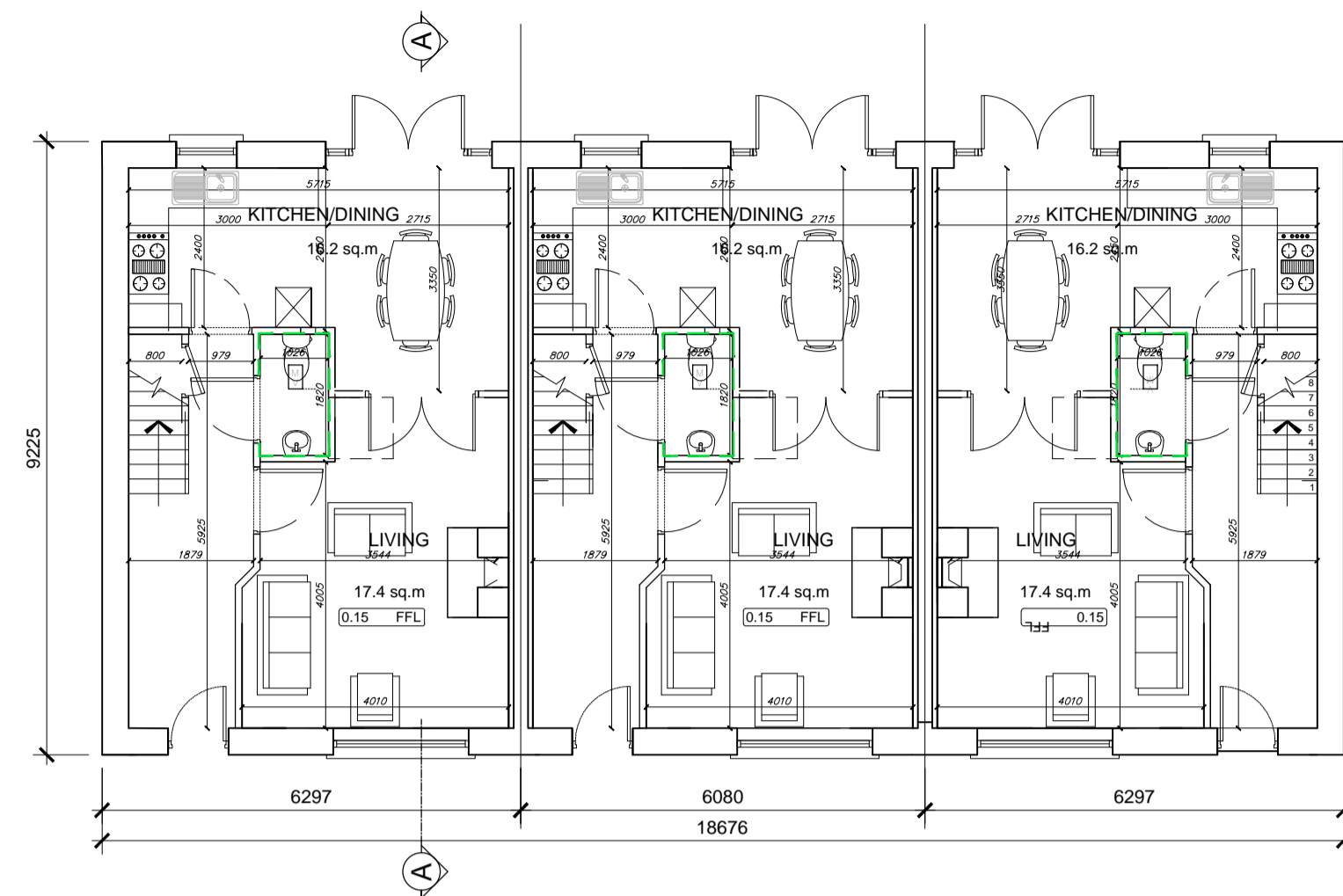


**GENERAL NOTES:**

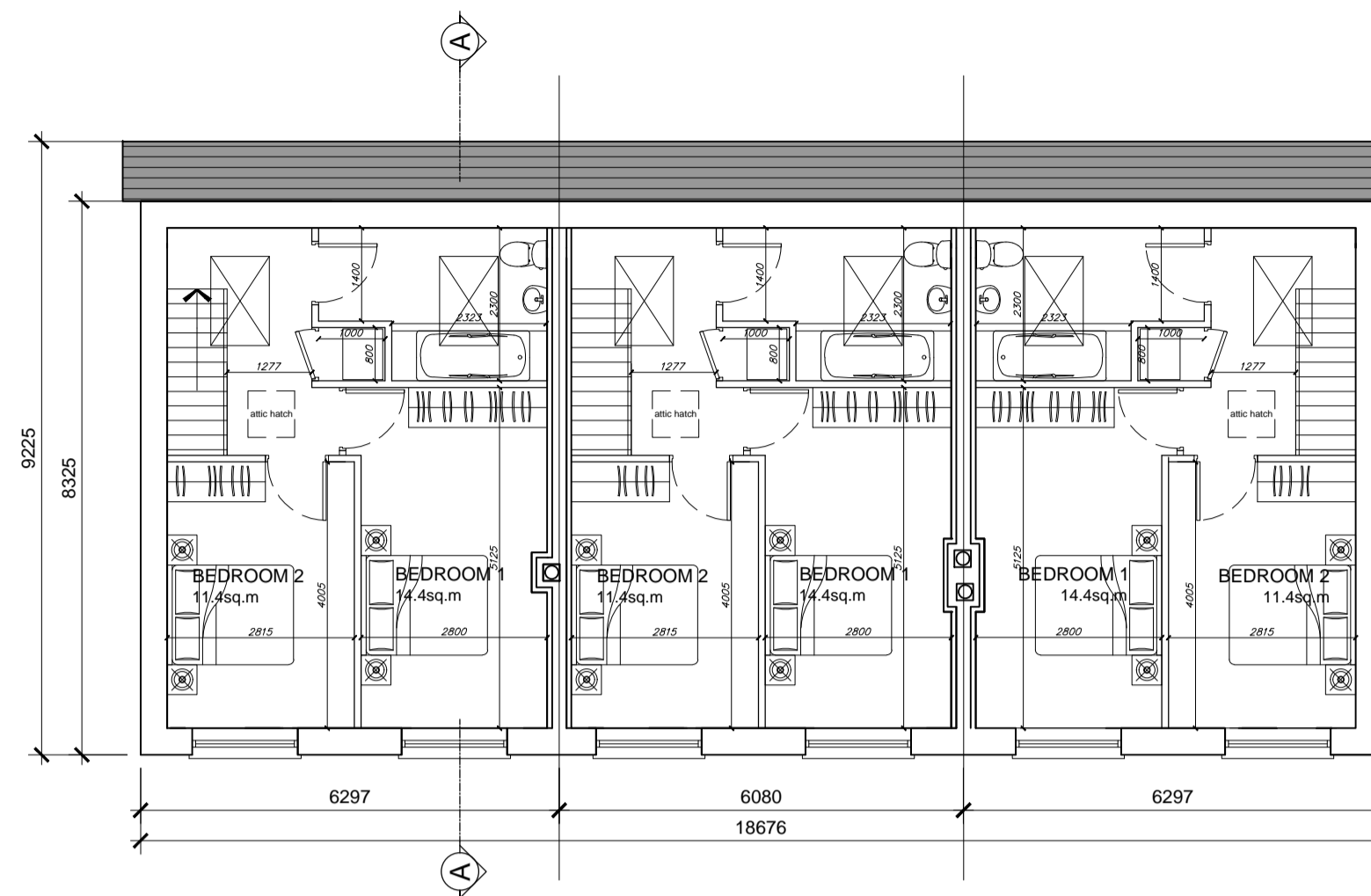
THIS DRAWING TO BE READ IN CONJUNCTION WITH ARCHITECT'S DRAWINGS, AND CONSULTANT ENGINEER'S DRAWINGS AND SPECIFICATIONS.  
 REFER TO ARCHITECT'S SITE PLAN SK01 FOR SPECIFIC NORTH ORIENTATION.  
 LEVELS GIVEN ON HOUSE TYPE DRAWINGS ARE GIVEN TO A LOCAL ABSOLUTE ZERO LEVEL. FOR SPECIFIC LEVELS OF INDIVIDUAL UNITS REFER TO ARCHITECT'S CONTEXT SECTIONS AND ENGINEERS DRAWINGS WHERE LEVELS ARE GIVEN IN RELATION TO LANDSURVEY'S BENCHMARK ON MALIN HEAD LEVEL.

**NOTES ON FINISHES:**

ROOF: TO BE FINISHED IN TILE IN SELECTED COLOUR.  
 WALLS: TO BE FINISHED IN SELECTED CLAY BRICKWORK, AND RENDER AS INDICATED.  
 JOINERY: ALL WINDOWS, DOORS (FRAMES&LEAVES), FASCIAS, SOFFITS, TO BE UPVC, ALUMINIUM OR TIMBER FOR PAINTING.  
 RAINWATER GOODS: TO BE UPVC OR PROFILED ALUMINIUM TO SPECIFICATION.



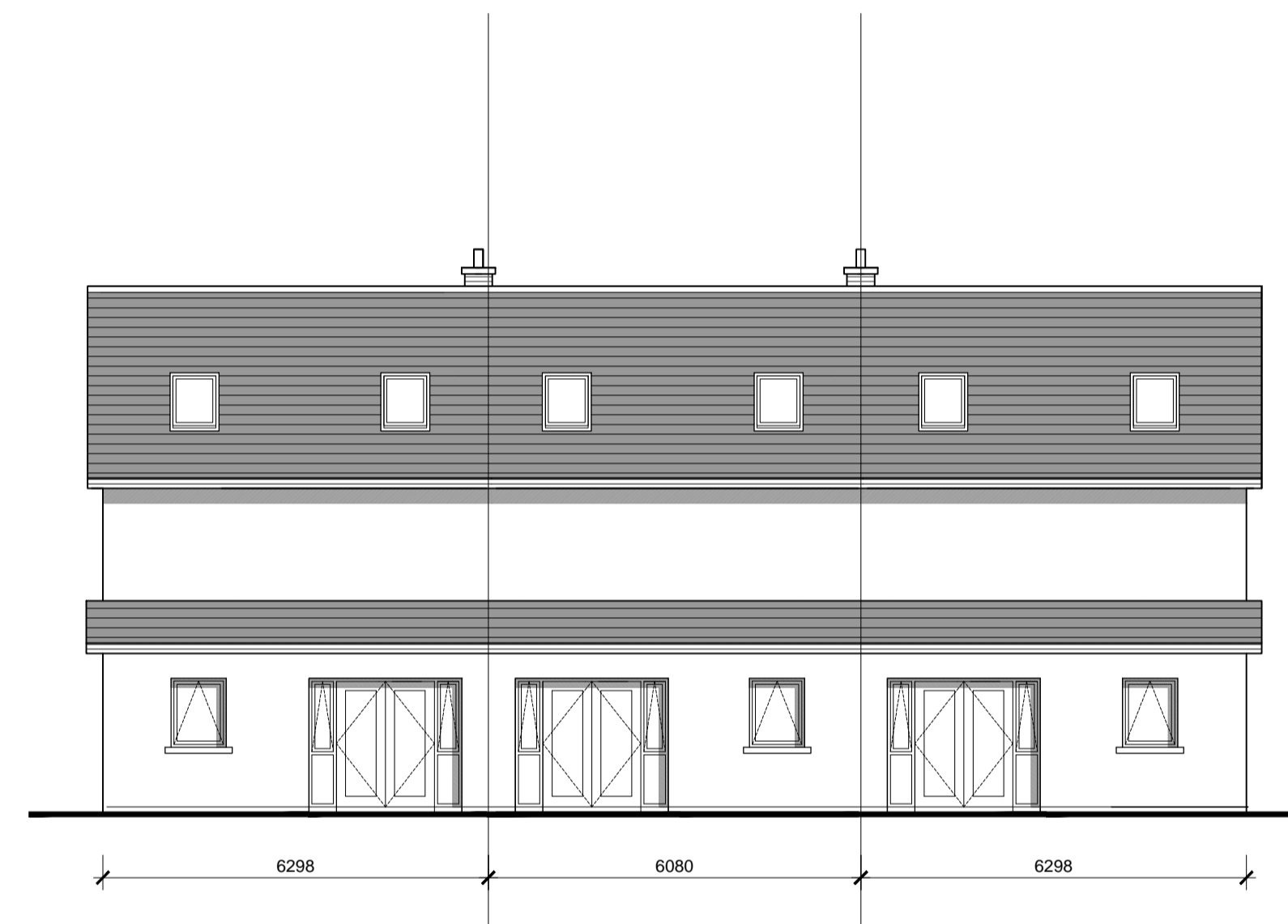
**GROUND FLOOR PLAN**  
 48.7m<sup>2</sup>  
 OA 90.9m<sup>2</sup>



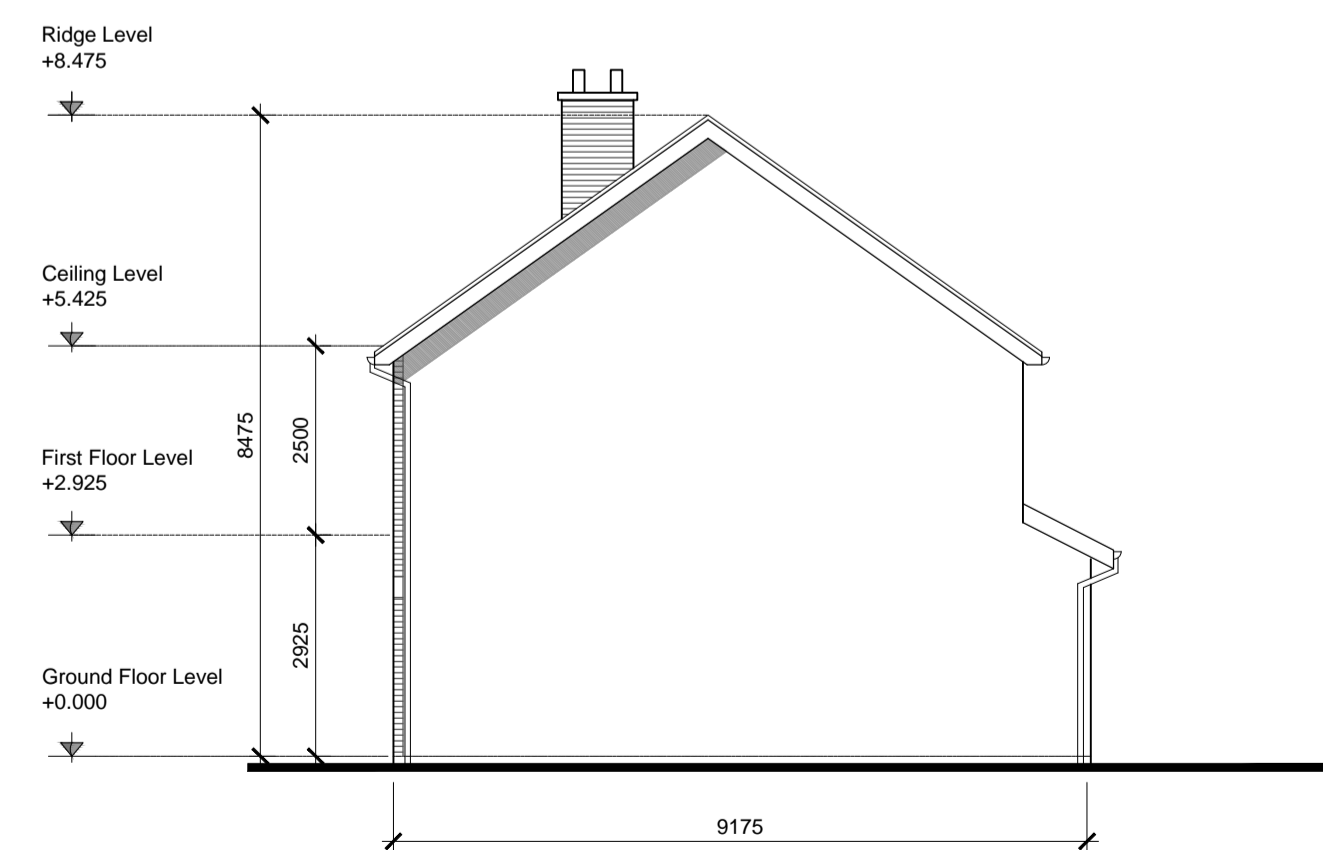
**FIRST FLOOR PLAN**  
 44.0m<sup>2</sup>



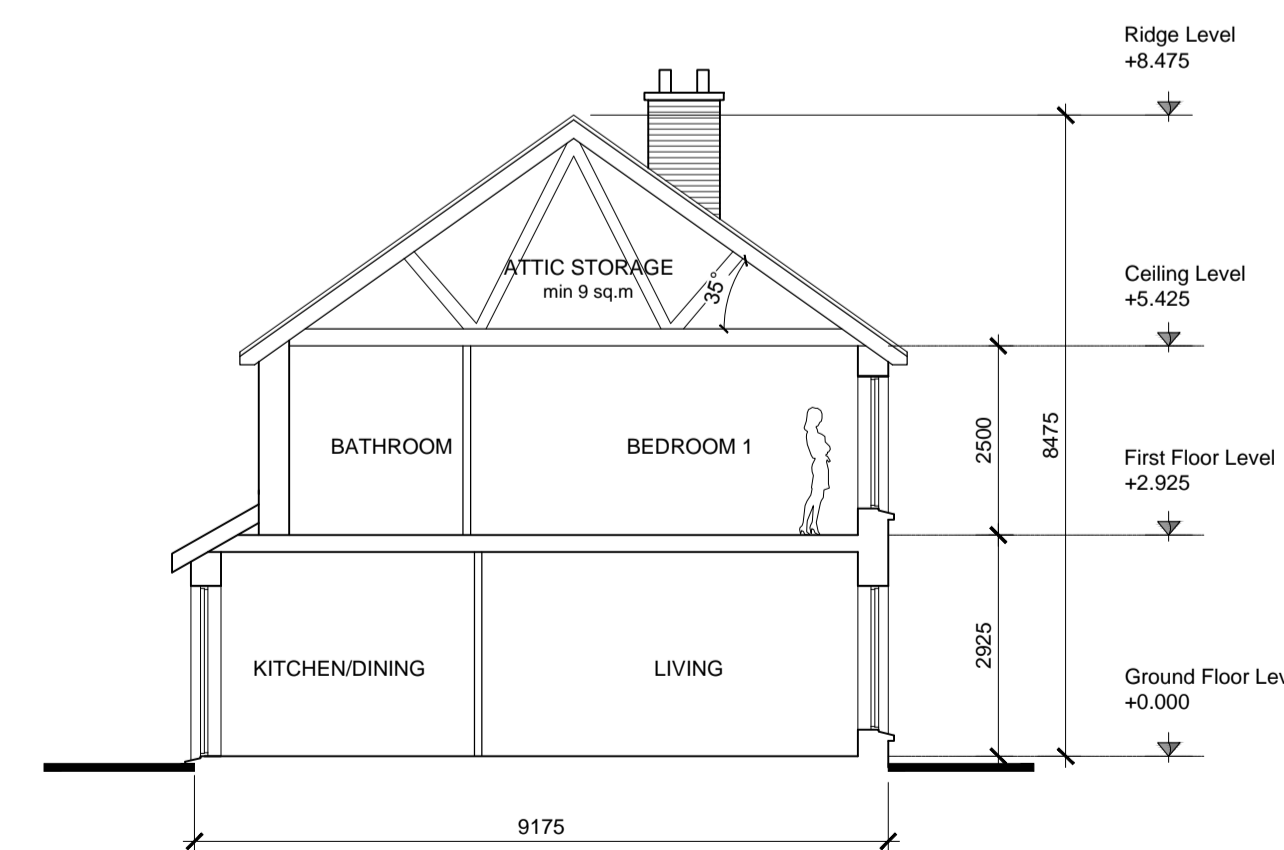
**FRONT ELEVATION**



**REAR ELEVATION**



**SIDE ELEVATION**



**SECTION A-A**

**HOUSE TYPE F/F1 - 3 No.**  
 2 STORY / 2 BEDROOMS

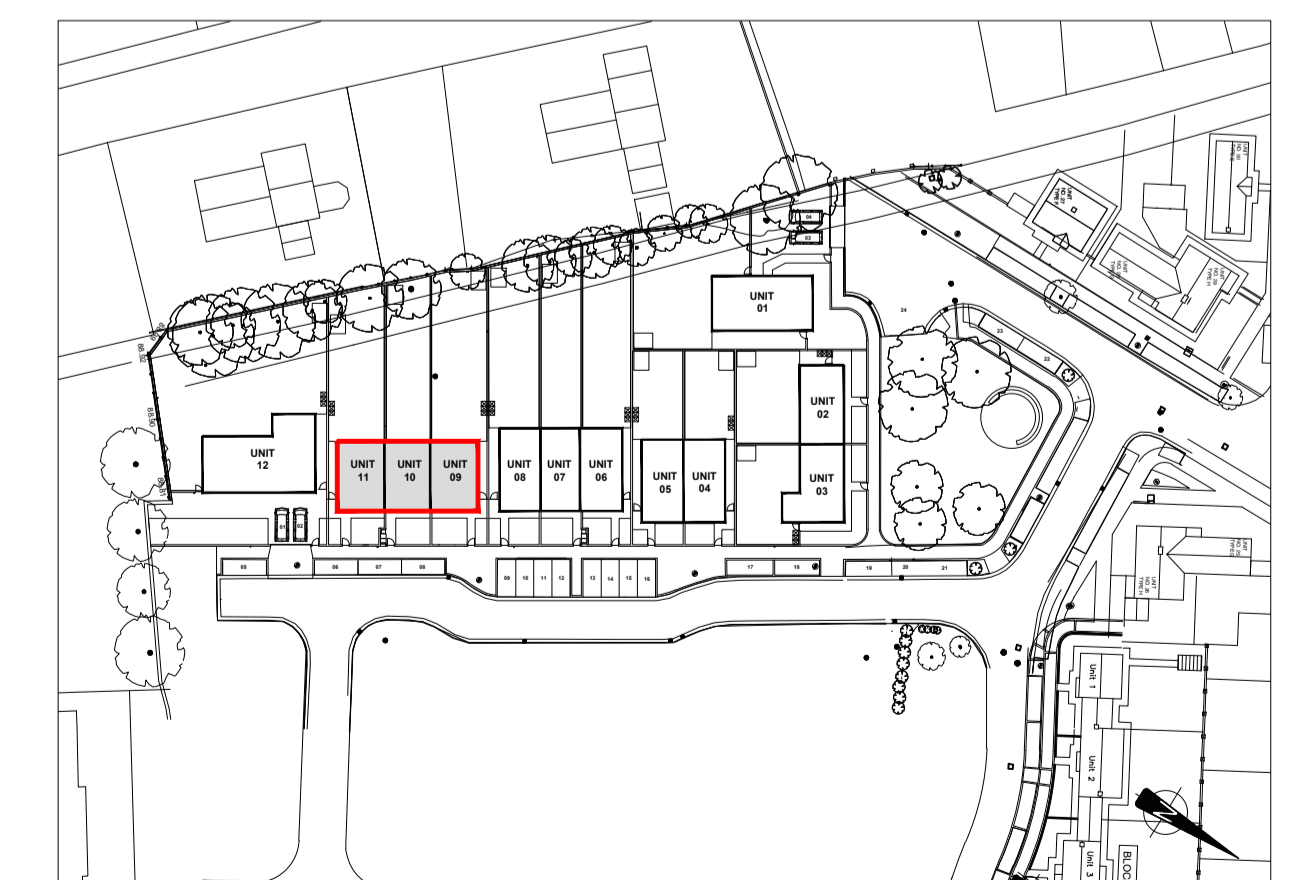
**AREA SCHEDULE**

GROUND FLOOR	48.7 m <sup>2</sup> / 524.2 ft <sup>2</sup>
FIRST FLOOR	44.0 m <sup>2</sup> / 473.6 ft <sup>2</sup>
<b>TOTAL</b>	<b>92.7 m<sup>2</sup> / 997.8 ft<sup>2</sup></b>

UNIT NO. 09	LIVING ROOM	17.4 m <sup>2</sup>
	KITCHEN/DINING	16.2 m <sup>2</sup>
	BEDROOM 01 (13 m <sup>2</sup> )	14.4 m <sup>2</sup>
	BEDROOM 02 (11.4 m <sup>2</sup> )	11.4 m <sup>2</sup>
	SANITARY FACILITIES	9.5 m <sup>2</sup>
	CIRCULATION	16.7 m <sup>2</sup>
	<b>GROSS AREA</b>	<b>92.7 m<sup>2</sup></b>
	STORAGE	1.2 m <sup>2</sup>
	ATTIC STORAGE	17.9 m <sup>2</sup>
	<b>TOTAL</b>	<b>19.1 m<sup>2</sup></b>
	PRIVATE OPEN SPACE	163.5 m <sup>2</sup>

UNIT NO. 10	LIVING ROOM	17.4 m <sup>2</sup>
	KITCHEN/DINING	16.2 m <sup>2</sup>
	BEDROOM 01 (13 m <sup>2</sup> )	14.4 m <sup>2</sup>
	BEDROOM 02 (11.4 m <sup>2</sup> )	11.4 m <sup>2</sup>
	SANITARY FACILITIES	9.5 m <sup>2</sup>
	CIRCULATION	16.7 m <sup>2</sup>
	<b>GROSS AREA</b>	<b>92.7 m<sup>2</sup></b>
	STORAGE	1.2 m <sup>2</sup>
	ATTIC STORAGE	17.9 m <sup>2</sup>
	<b>TOTAL</b>	<b>19.1 m<sup>2</sup></b>
	PRIVATE OPEN SPACE	123.9 m <sup>2</sup>

UNIT NO. 11	LIVING ROOM	17.4 m <sup>2</sup>
	KITCHEN/DINING	16.2 m <sup>2</sup>
	BEDROOM 01 (13 m <sup>2</sup> )	14.4 m <sup>2</sup>
	BEDROOM 02 (11.4 m <sup>2</sup> )	11.4 m <sup>2</sup>
	SANITARY FACILITIES	9.5 m <sup>2</sup>
	CIRCULATION	16.7 m <sup>2</sup>
	<b>GROSS AREA</b>	<b>92.7 m<sup>2</sup></b>
	STORAGE	1.2 m <sup>2</sup>
	ATTIC STORAGE	17.9 m <sup>2</sup>
	<b>TOTAL</b>	<b>19.1 m<sup>2</sup></b>
	PRIVATE OPEN SPACE	146.2 m <sup>2</sup>



**SITE LOCATION MAP (1:1000)**

**NOTES:**

DO NOT SCALE FROM DRAWINGS. WORK TO FIGURED DIMENSIONS ONLY. ARCHITECT TO BE NOTIFIED OF ALL DISCREPANCIES.



**Kildare County Council**  
 Comhairle Contae Chill Dara

REVISIONS		
DATE	DESCRIPTION	No.

<b>M CORM</b> M'ROSSAN O'ROURKE MANNING ARCHITECTS	PROJECT TITLE:	DATE:	DRAWN BY:
	12NO. SOCIAL HOUSING UNITS ANNE STREET, PROSPEROUS, CO KILDARE	JUN '16	MM
DRAWING TITLE: <b>HOUSE TYPE F-F1-F</b> PLANS, SECTIONS, ELEVATIONS	SCALE:	REVISION:	
	1:100	-	
	JOB NO:	DRAWING NO:	
	16010	PL11	