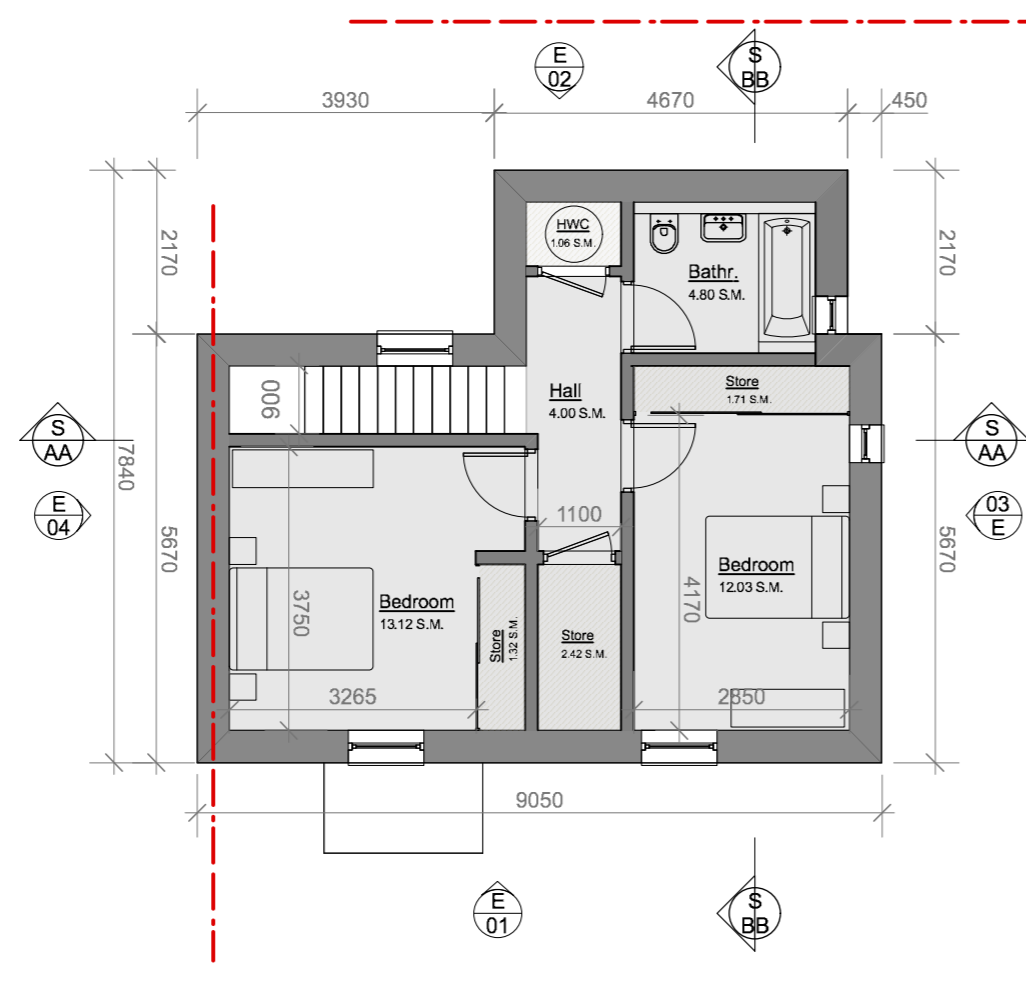
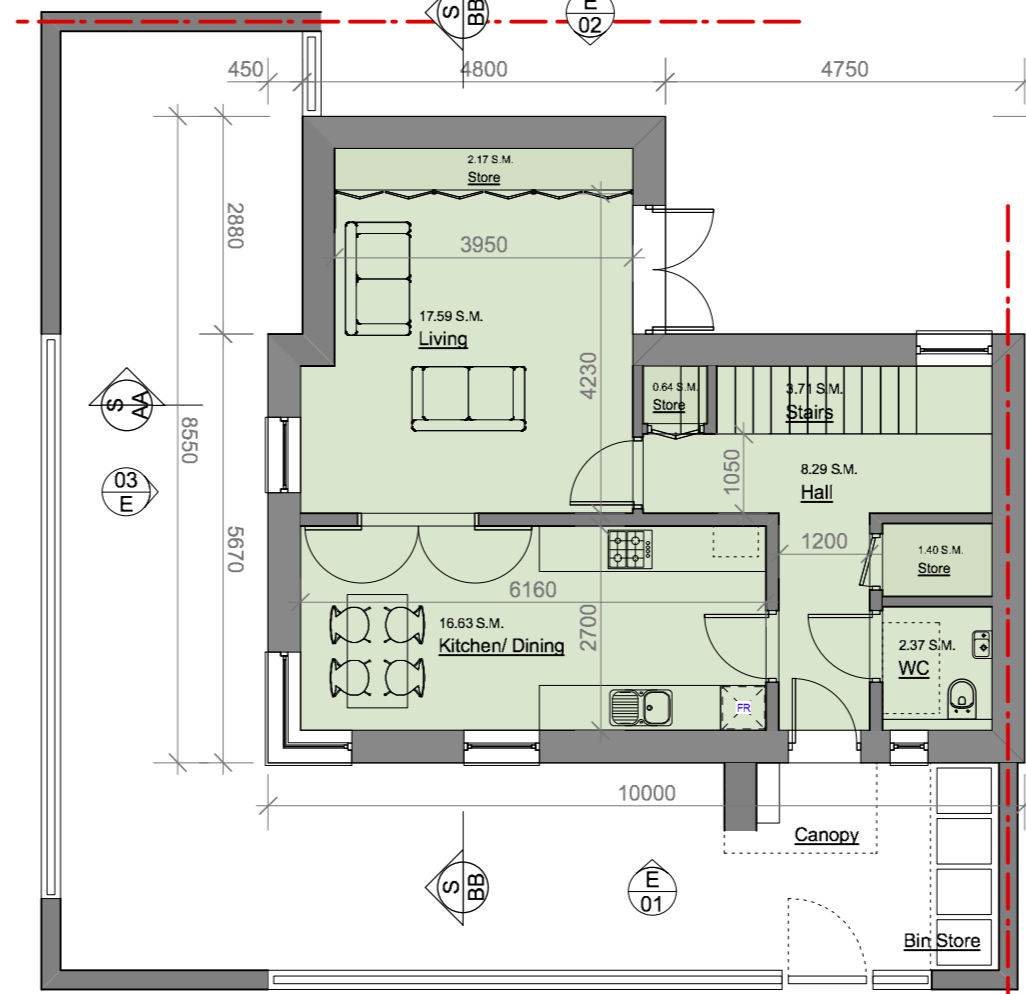


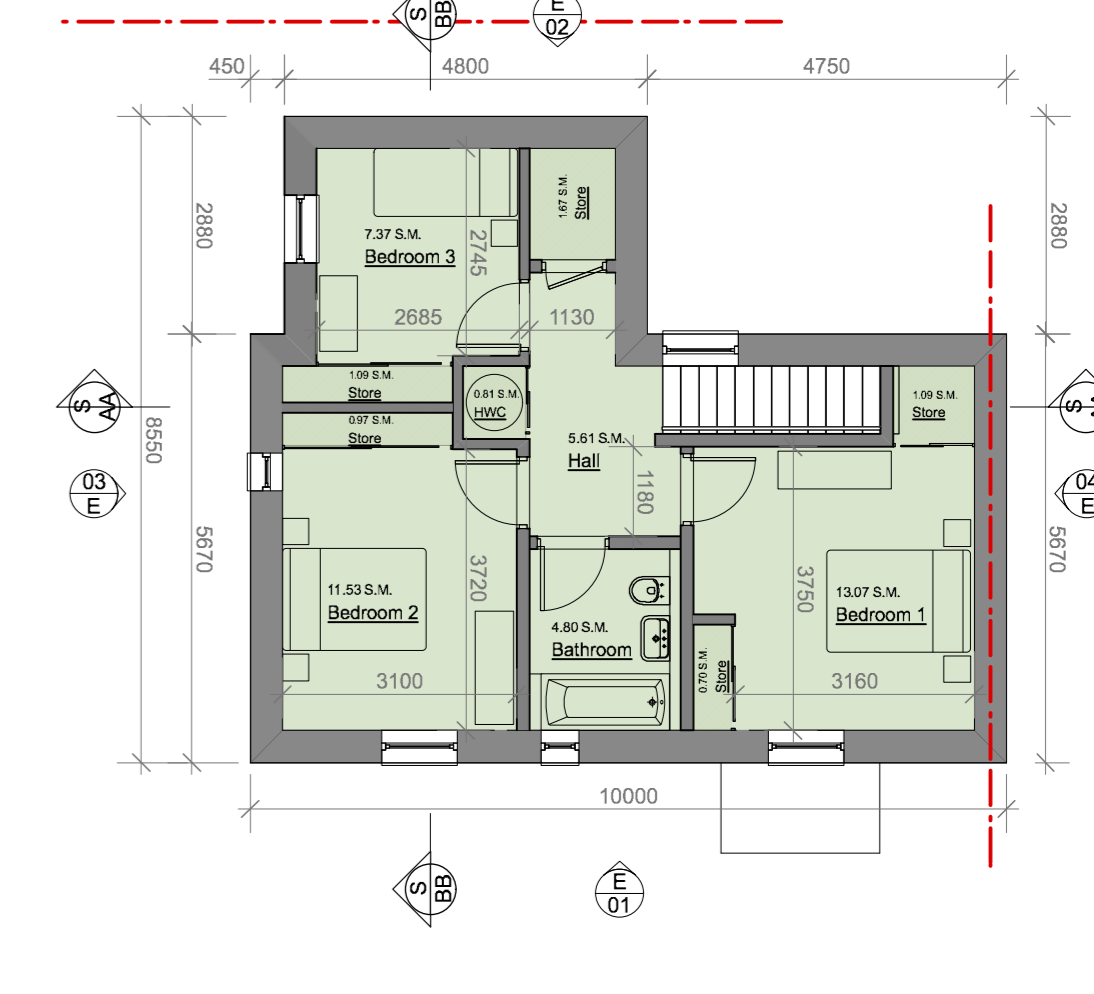
2B / 4P Corner House - Block E / S  
Ground Floor Plan



2B / 4P Corner House - Block E / S  
First Floor Plan

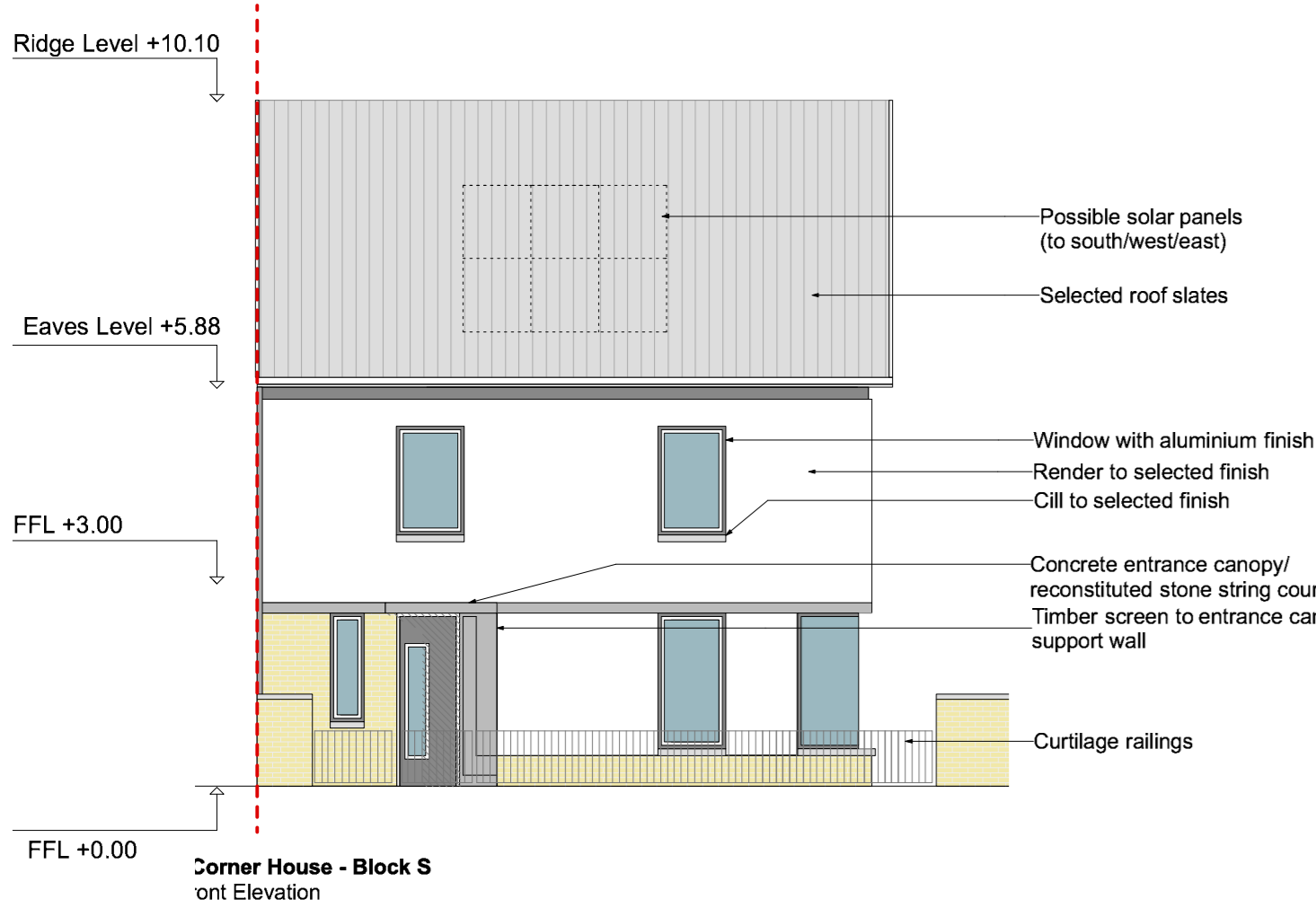


3B / 5P Corner House - Block E / S  
Ground Floor Plan

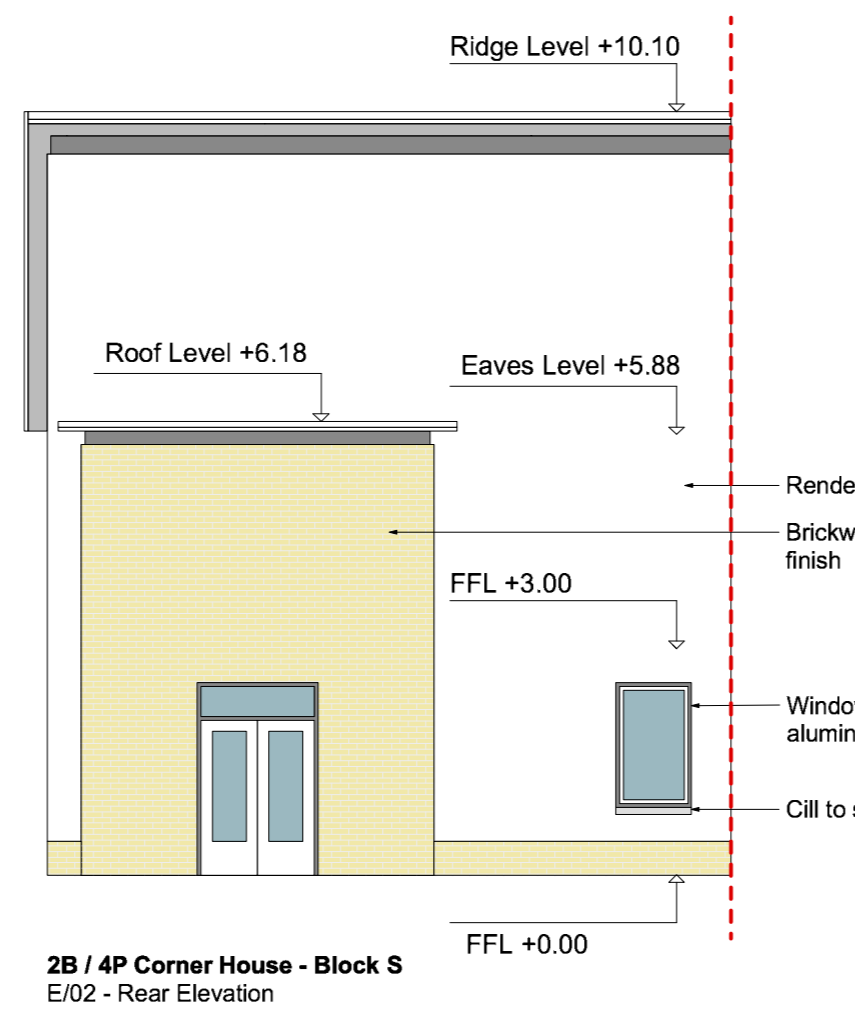


3B / 5P Corner House - Block E / S  
First Floor Plan

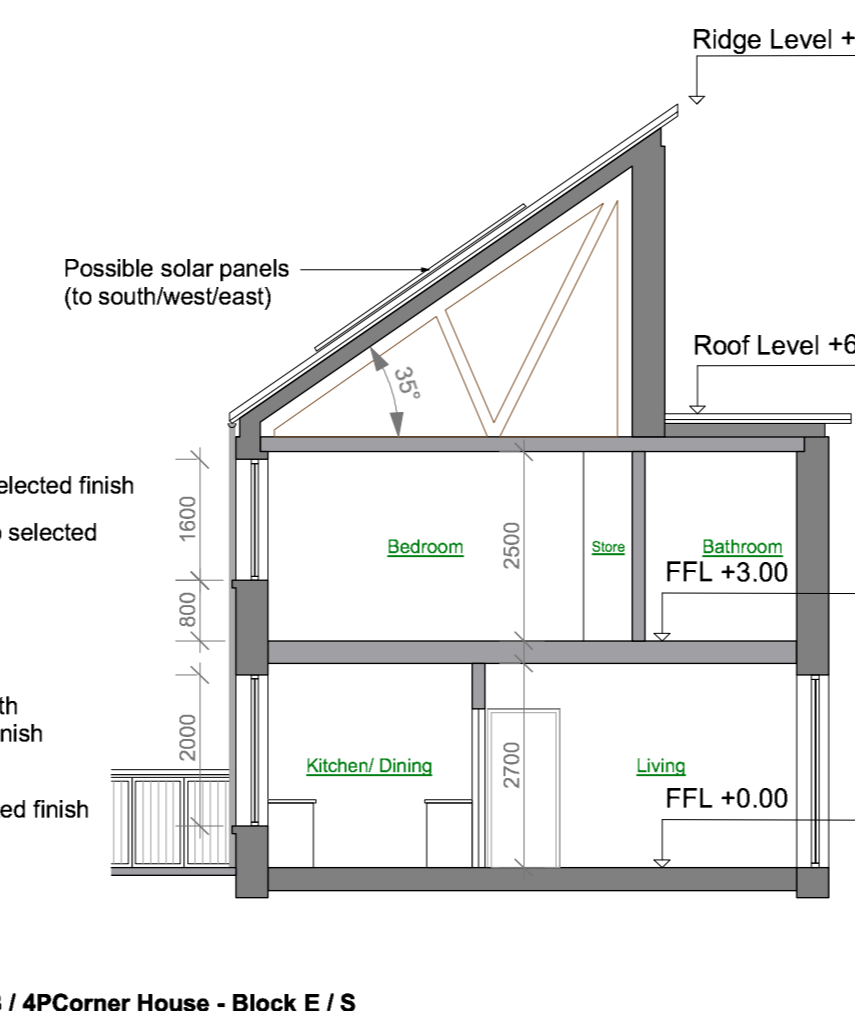
## Floor Plans



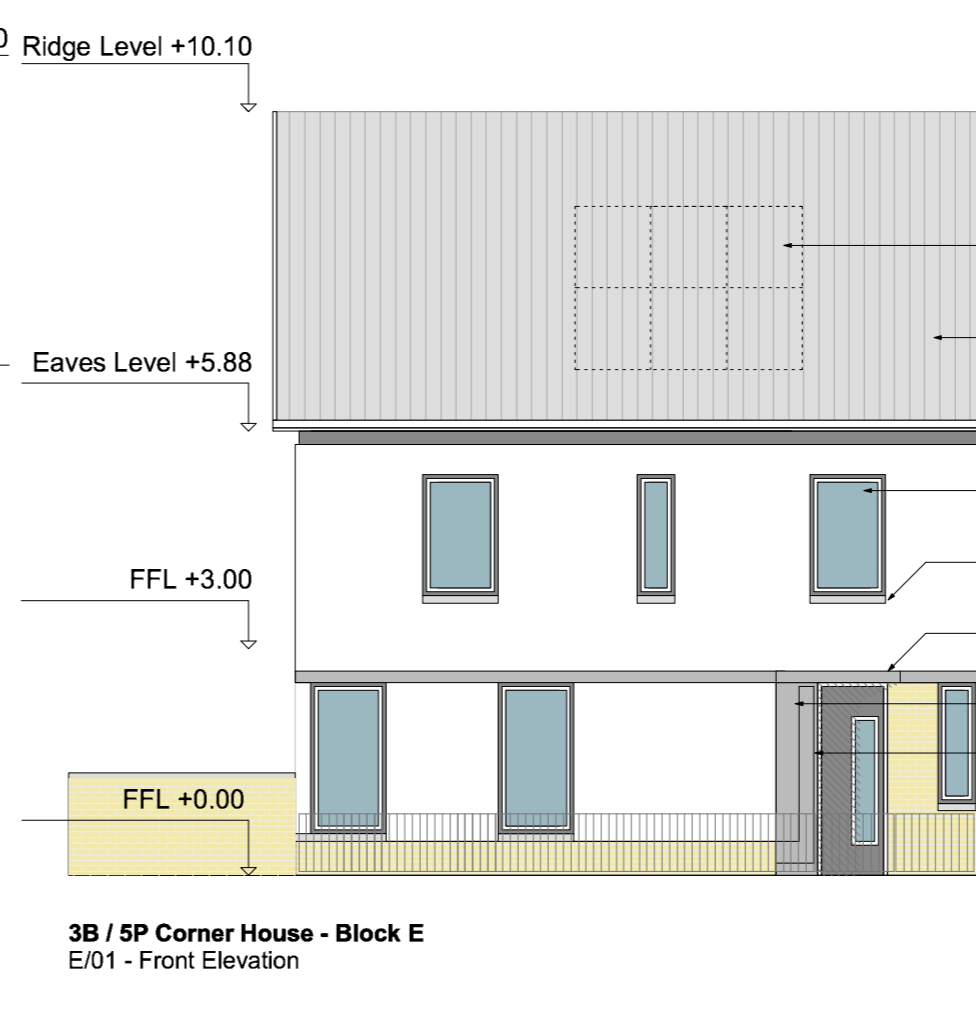
Corner House - Block S  
Front Elevation



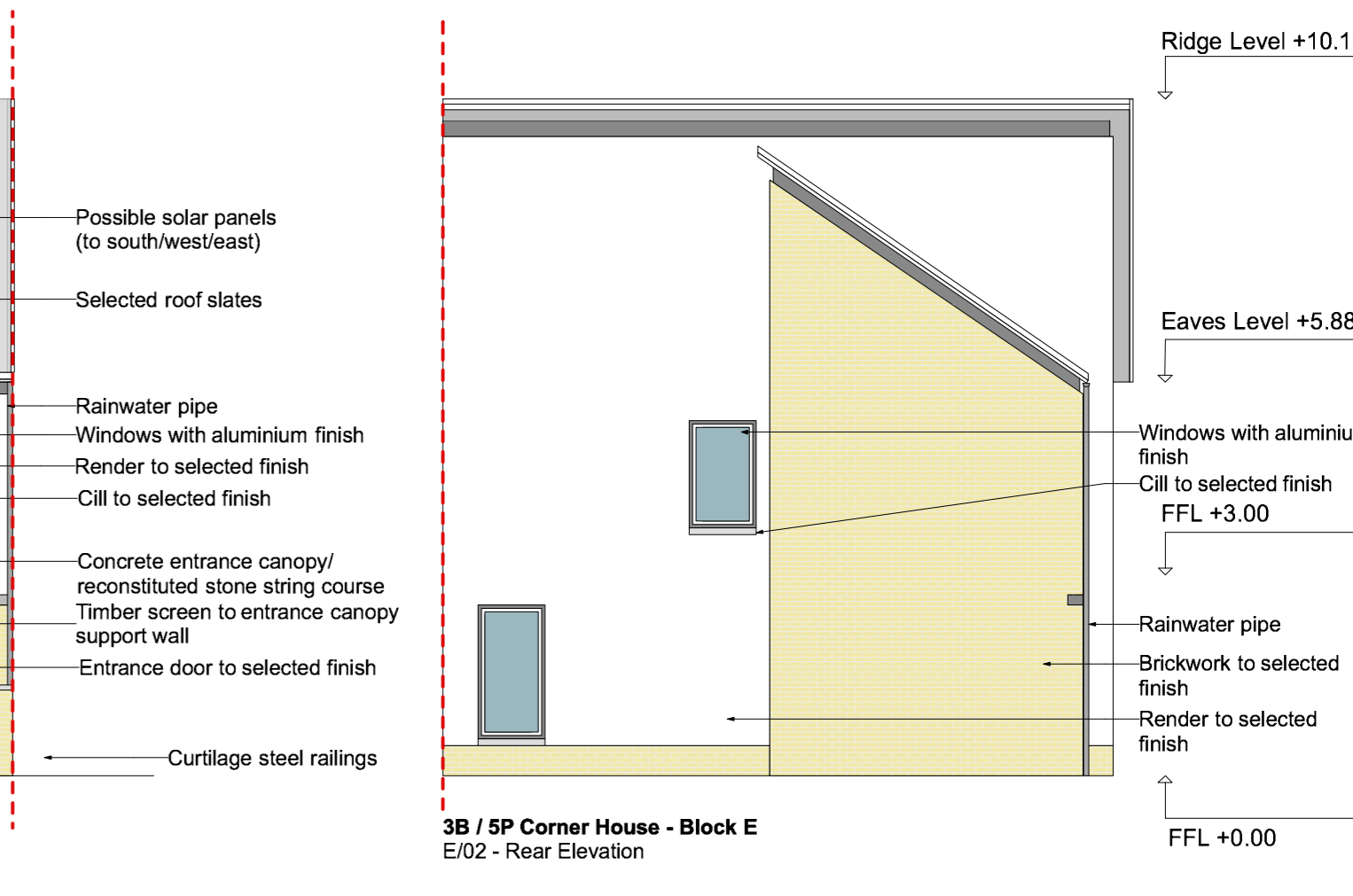
2B / 4P Corner House - Block S  
E/02 - Rear Elevation



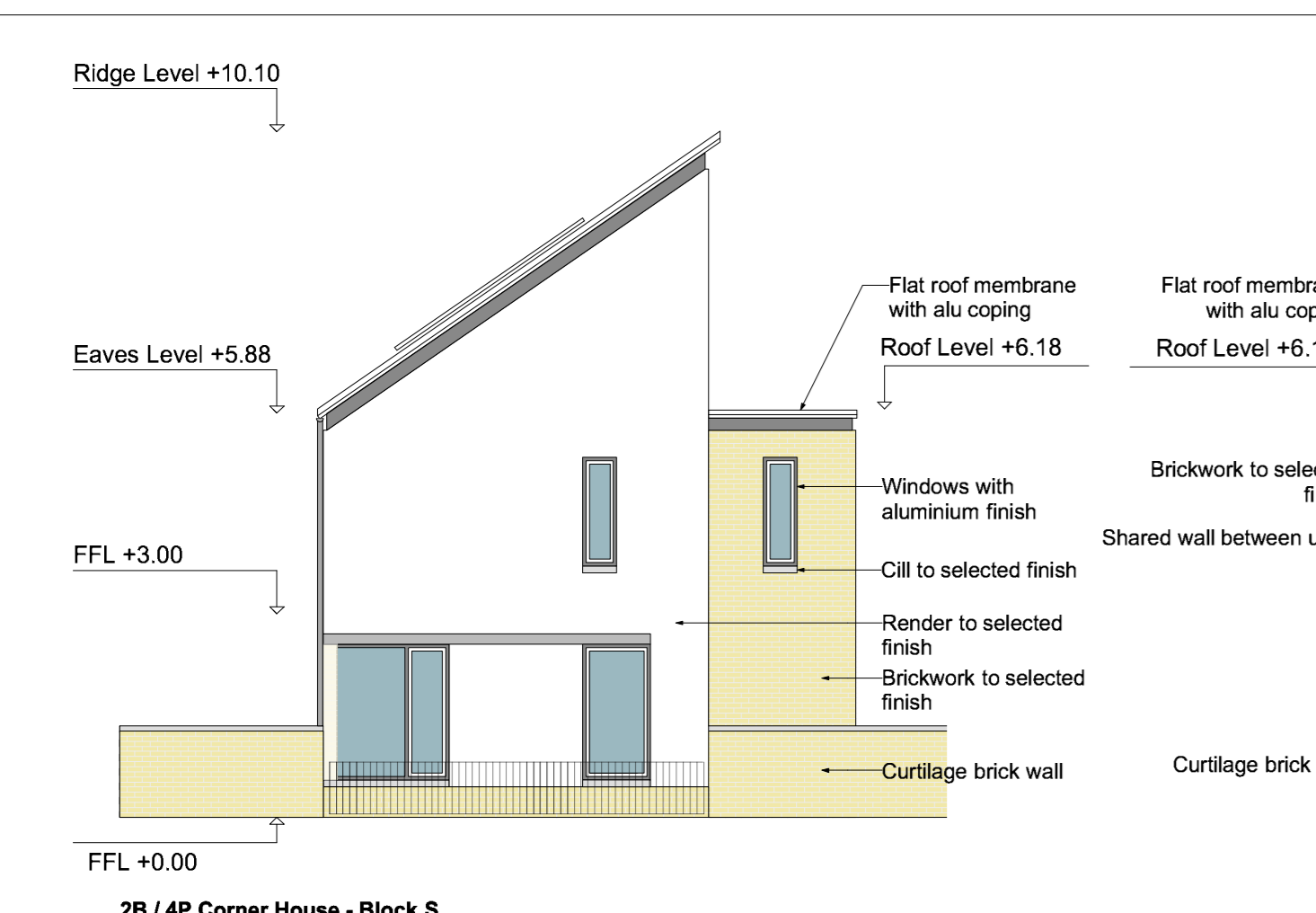
2B / 4P Corner House - Block E / S  
S/BB - Section B-B



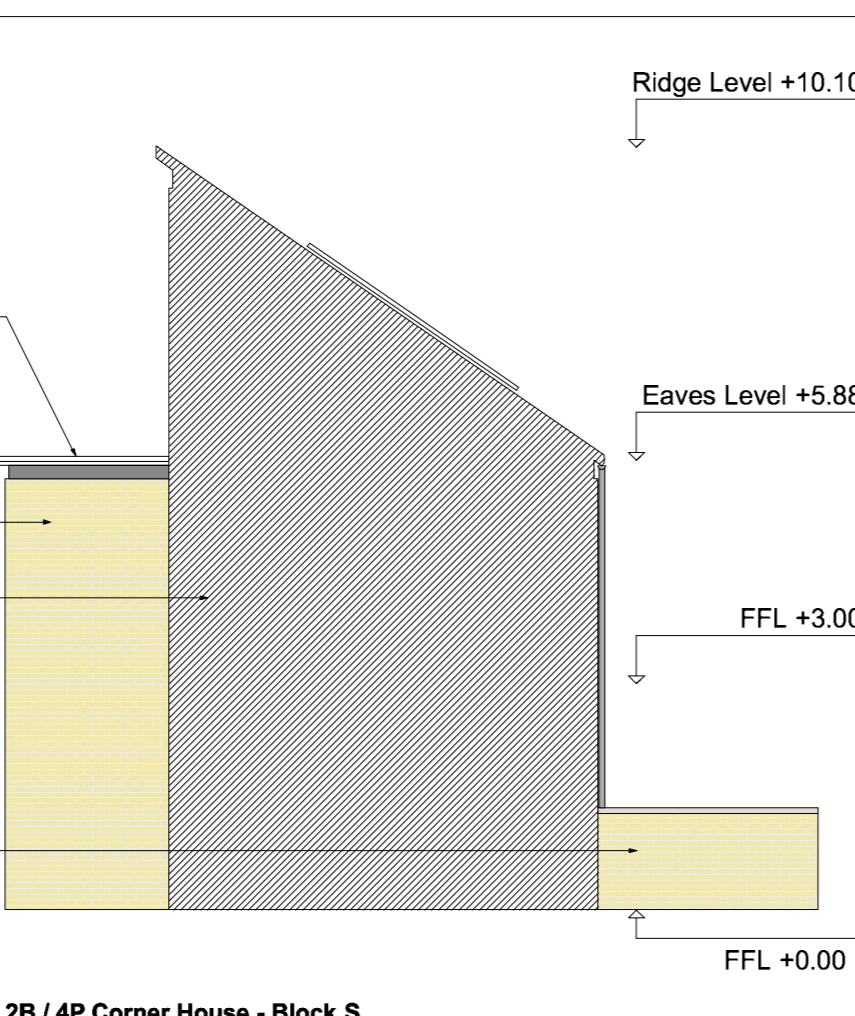
3B / 5P Corner House - Block E  
E/01 - Front Elevation



3B / 5P Corner House - Block E  
E/02 - Rear Elevation



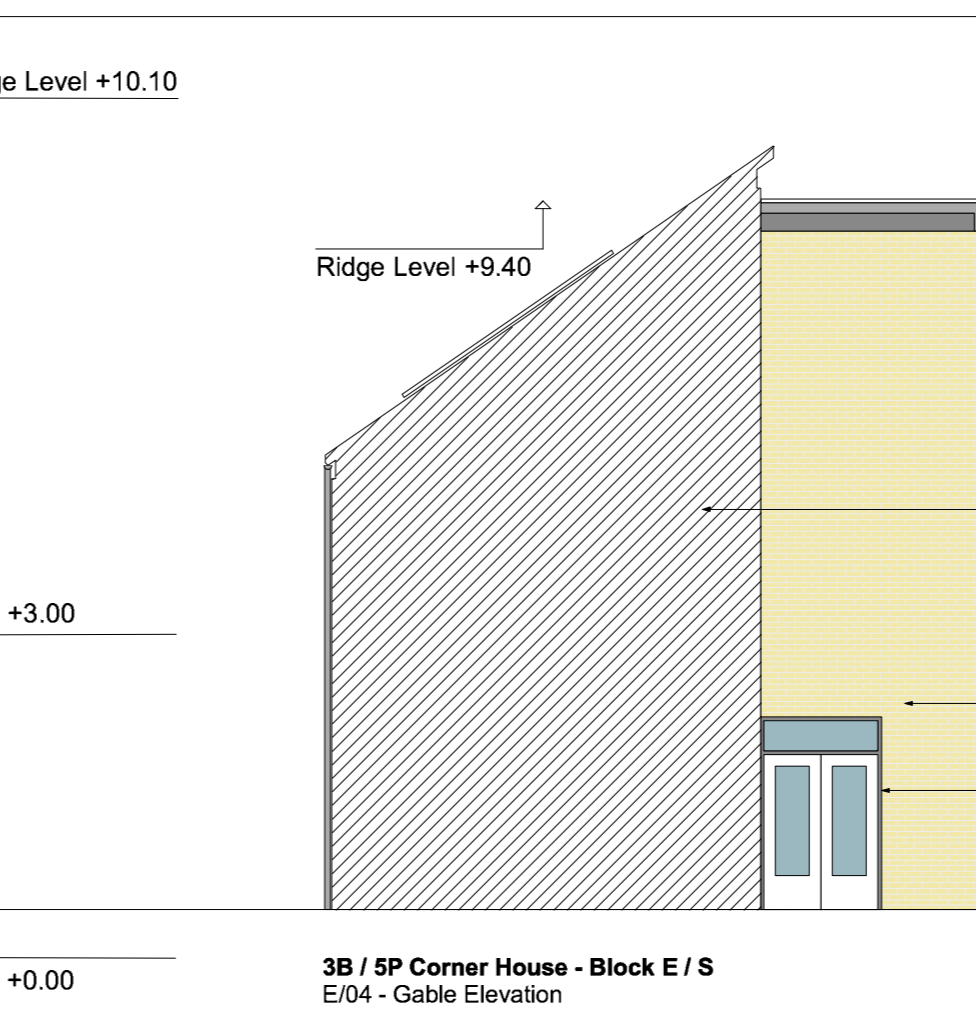
2B / 4P Corner House - Block S  
E/03 - Side Elevation



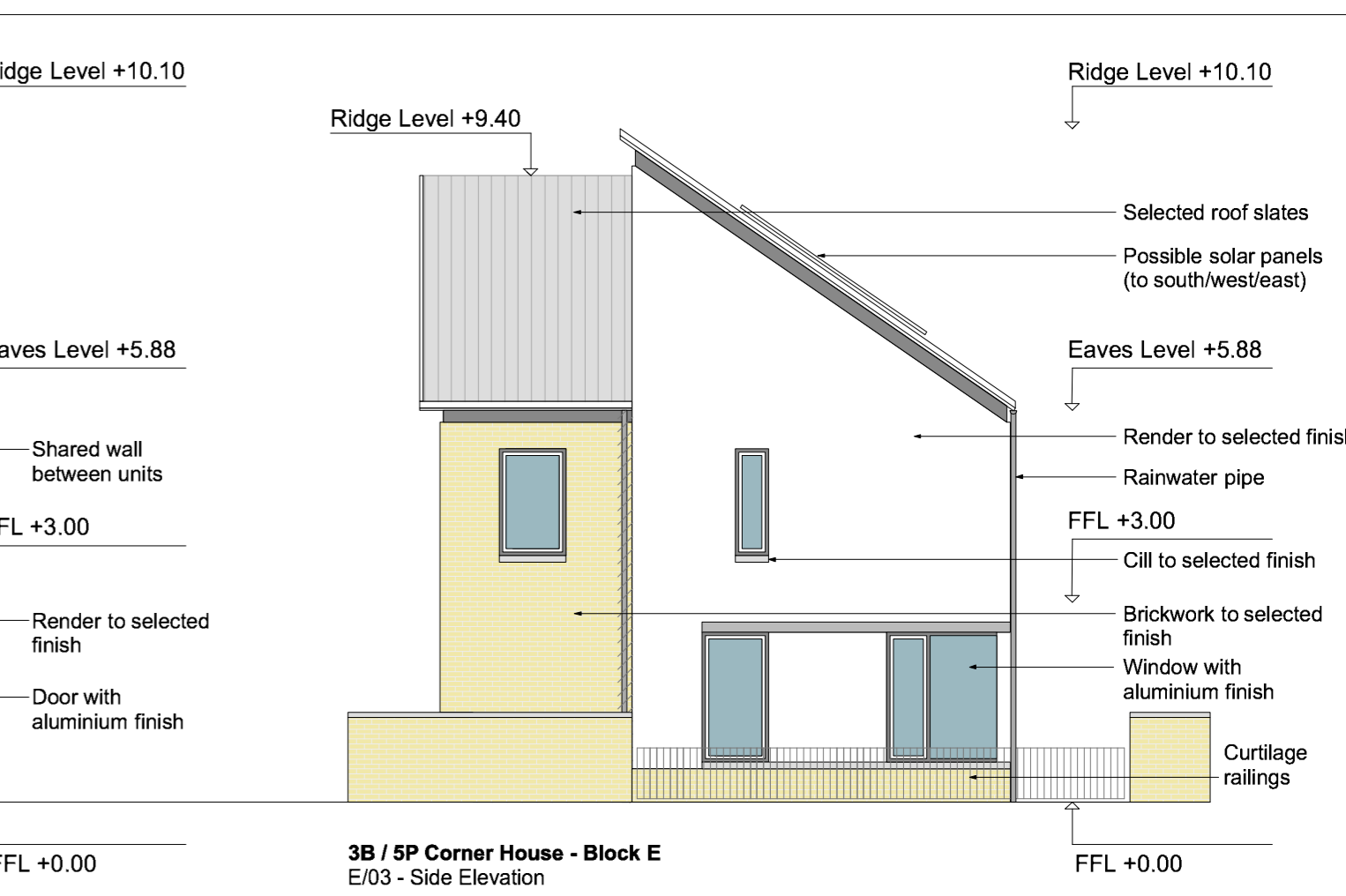
2B / 4P Corner House - Block S  
E/04 - Gable Elevation



3B / 5P Corner / Semi-detached House - Block E / S  
S/A/A - Section A-A



3B / 5P Corner House - Block E / S  
E/04 - Gable Elevation



3B / 5P Corner House - Block E  
E/03 - Side Elevation

## Elevations / Sections

## Unit Allocation



For further information on planning, screening and social infrastructure please refer to planning documentation, prepared by HRA Planning.

For further information on soft landscaping please refer to landscape design plan, prepared by Mitchell+Associates.

For further information on road engineering and drainage please refer to engineering documentation, prepared by Malone O'Regan.

For further information on mechanical and engineering, including CCTV, please refer to M+E documentation, prepared by Semple McKillop.

For further information on ecological impact assessment please refer to ecological documentation, prepared by NMEcology.

For further information on architectural design and details please refer to the architectural design statement, prepared by SHA.

**Allocation of all individual building types and their orientation to North is indicated on sheet 326/NAN/031**

Use figured dimensions only. Do not use drawings based on unverified information. Do not use drawings based on unverified information. Do not use drawings based on unverified information. Do not use drawings based on unverified information.

REV NOTES DATE

**SEÁN HARRINGTON ARCHITECTS**

PROJECT: Residential Development at Nancy's Lane, Clane  
CLIENT: Kildare County Council  
DRAWN BY: odtp  
CHECKED BY: sh

326-CLA-PL-022

## Elevations / Sections