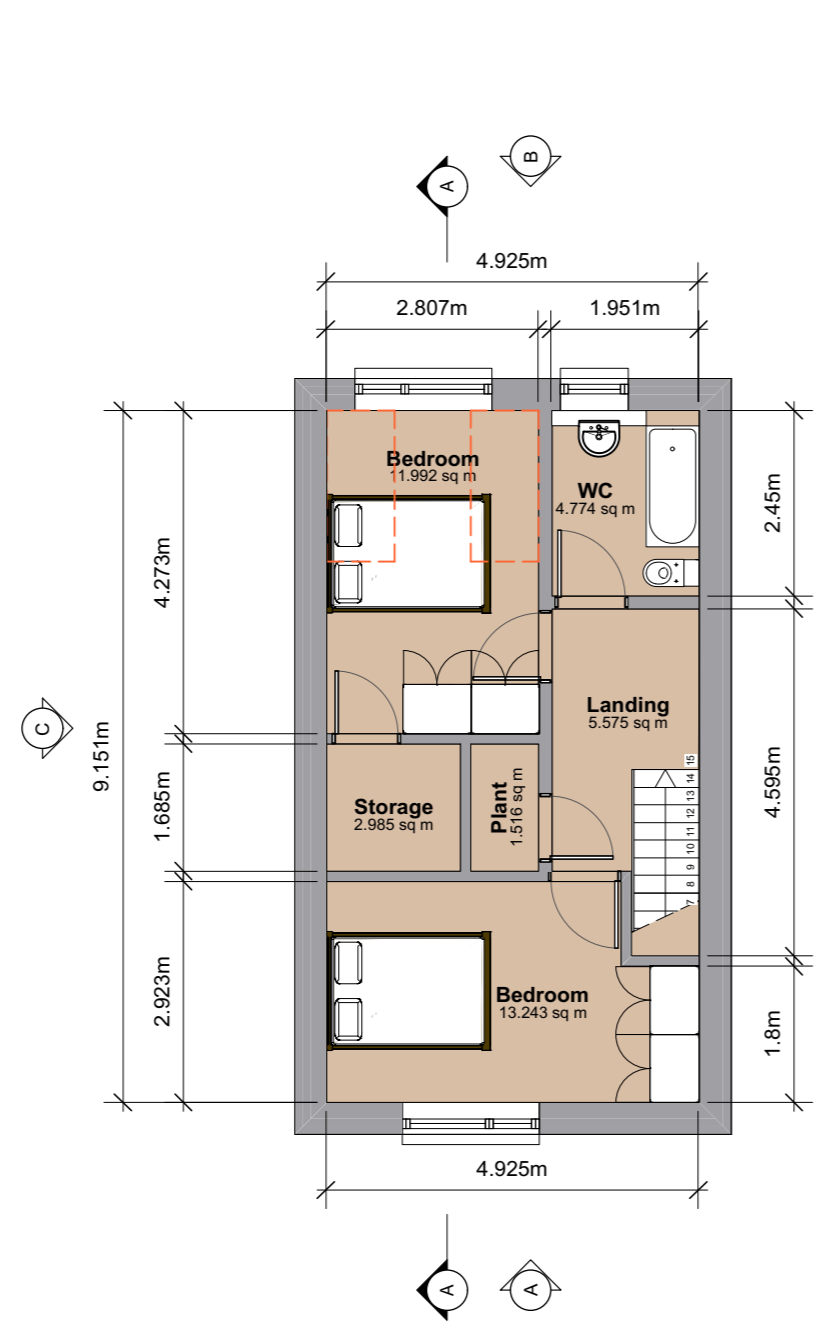
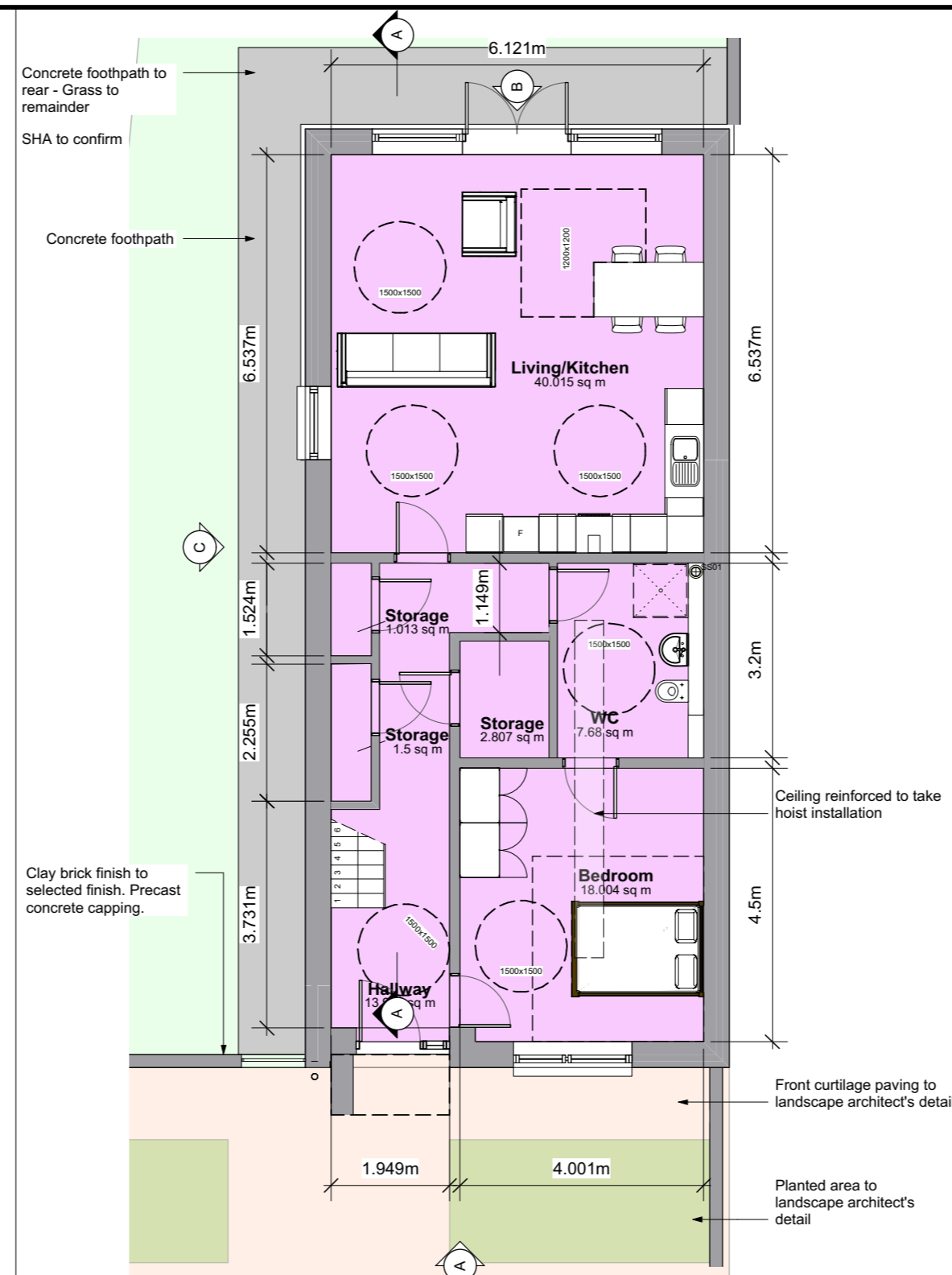


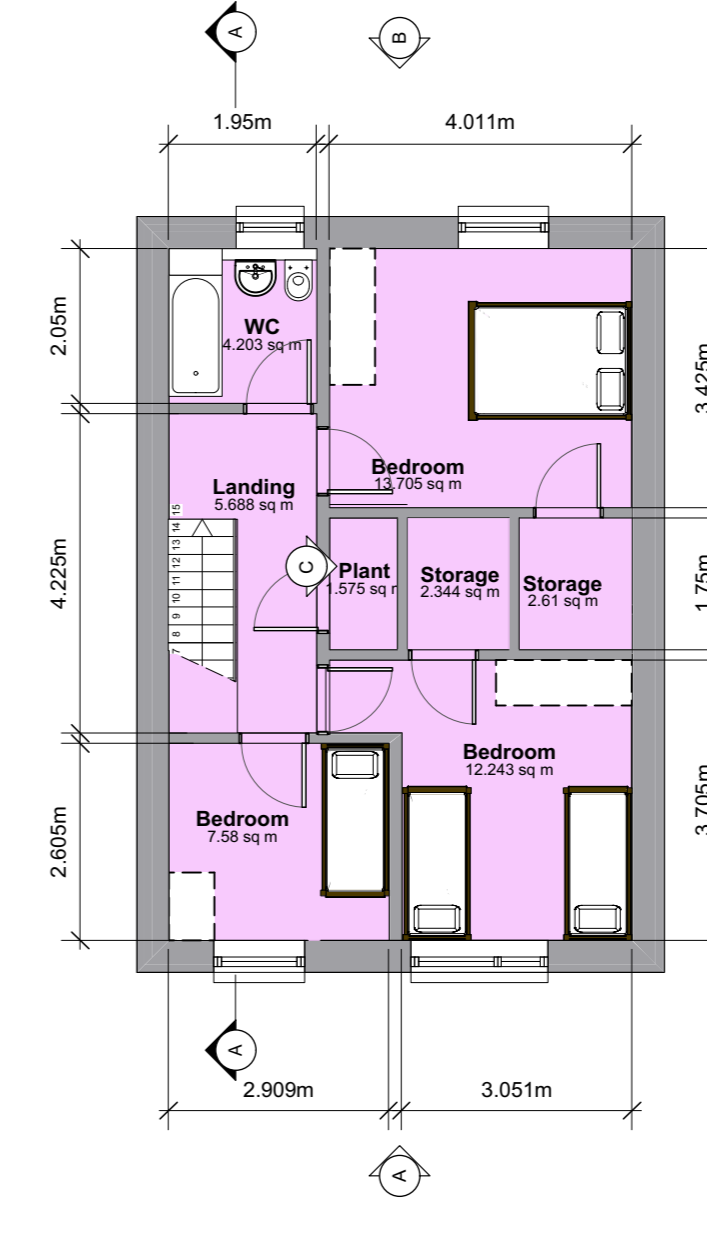
01A 2B/4P Terrace - Dwl. Type 02A - Ground Floor Plan
Scale: 1:100



01B 2B/4P Terrace - Dwl. Type 02A - First Floor Plan
Scale: 1:100



02A 4B/7P End Terrace - Dwl. Type 04C - Ground Floor Plan
Scale: 1:100



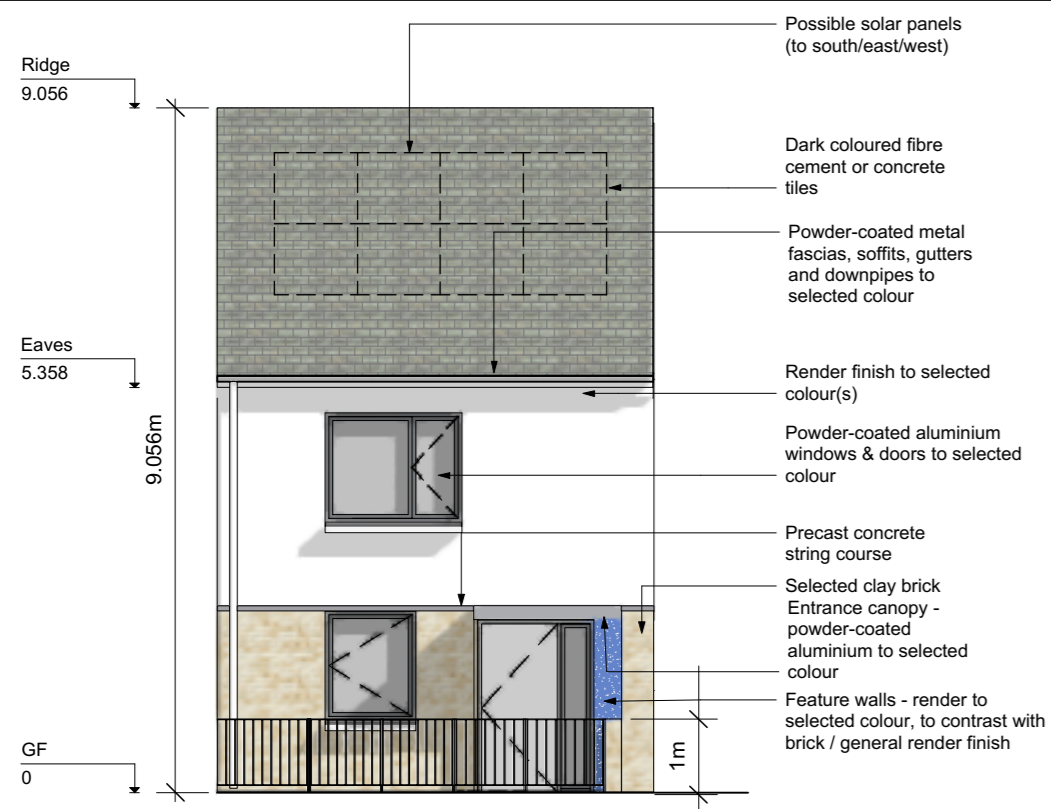
02B 4B/7P End Terrace - Dwl. Type 04C - First Floor Plan
Scale: 1:100

Unit Type Schedule of Accommodation	
2 bed 2 storey dwl (2B4P)	
Area compliance with KCC CDP & DSFNA 2018	
Target Minimum floor areas	
Aggregate GIA	85.0m ²
Aggregate Living	30.0m ²
Aggregate Bedroom	25.0m ²
Aggregate Storage	6.0m ²
Min. Width (Liv/Kit)	3.6m
Min. Width Achieved	See Floor Plans
Min. Width (Bed)	2.8m
Min. Width Achieved	See Floor Plans
Area Breakdown	
GIA - 2B/4P GF	44.6m ²
GIA - 2B/4P 1F	45.1m ²
Aggregate GIA	89.6m ²
Room Name	Area
Living Room	15.8m ²
Kitchen	14.8m ²
Aggregate Living	30.6m ²
Bedroom	12.0m ²
Bedroom	13.2m ²
Aggregate Bedroom	25.2m ²
Storage	1.3m ²
Storage	1.3m ²
Storage	0.5m ²
Storage	3.0m ²
Aggregate Storage	6.1m ²
WC	4.8m ²
WC	2.7m ²
Plant	1.5m ²

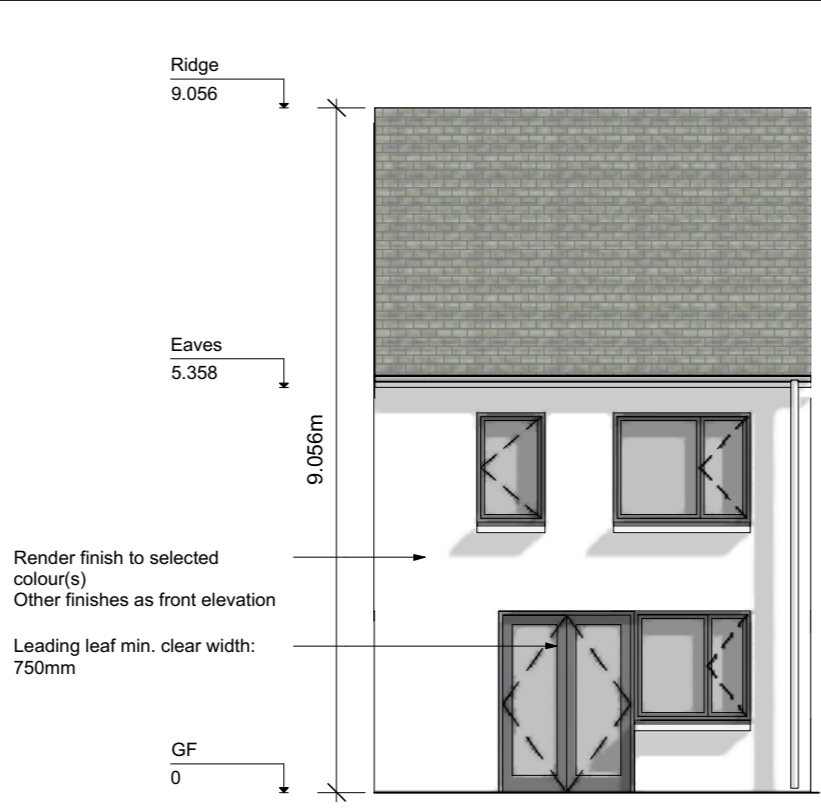
03A 2B/4P Type 02A Schedule
Scale: 1:100

Unit Type Schedule of Accommodation	
4 bed 2 storey dwelling (4B7P)	
Area compliance with KCC CDP & QHSC 2007	
Target Minimum floor areas	
Aggregate GIA	110.0m ²
Aggregate Living	40.0m ²
Aggregate Bedroom	43.0m ²
Aggregate Storage	10.0m ²
Min. Width (Liv/Kit)	3.8m
Min. Width Achieved	See Floor Plans
Min. Width (Bed)	2.8m
Min. Width Achieved	See Floor Plans
Area Breakdown	
GIA - 3B/5P GF	89.0m ²
GIA - 3B/5P FF	56.0m ²
Aggregate GIA	145.0m ²
Room Name	Area
Living/Kitchen	40.0m ²
Aggregate Living	40.0m ²
Bedroom	18.0m ²
Bedroom	13.7m ²
Bedroom	7.6m ²
Bedroom	12.2m ²
Aggregate Bedroom	51.5m ²
Storage	1.5m ²
Storage	2.8m ²
Storage	1.0m ²
Storage	2.6m ²
Storage	2.3m ²
Aggregate Storage	10.3m ²
WC	4.2m ²
WC	7.7m ²
Plant	1.6m ²

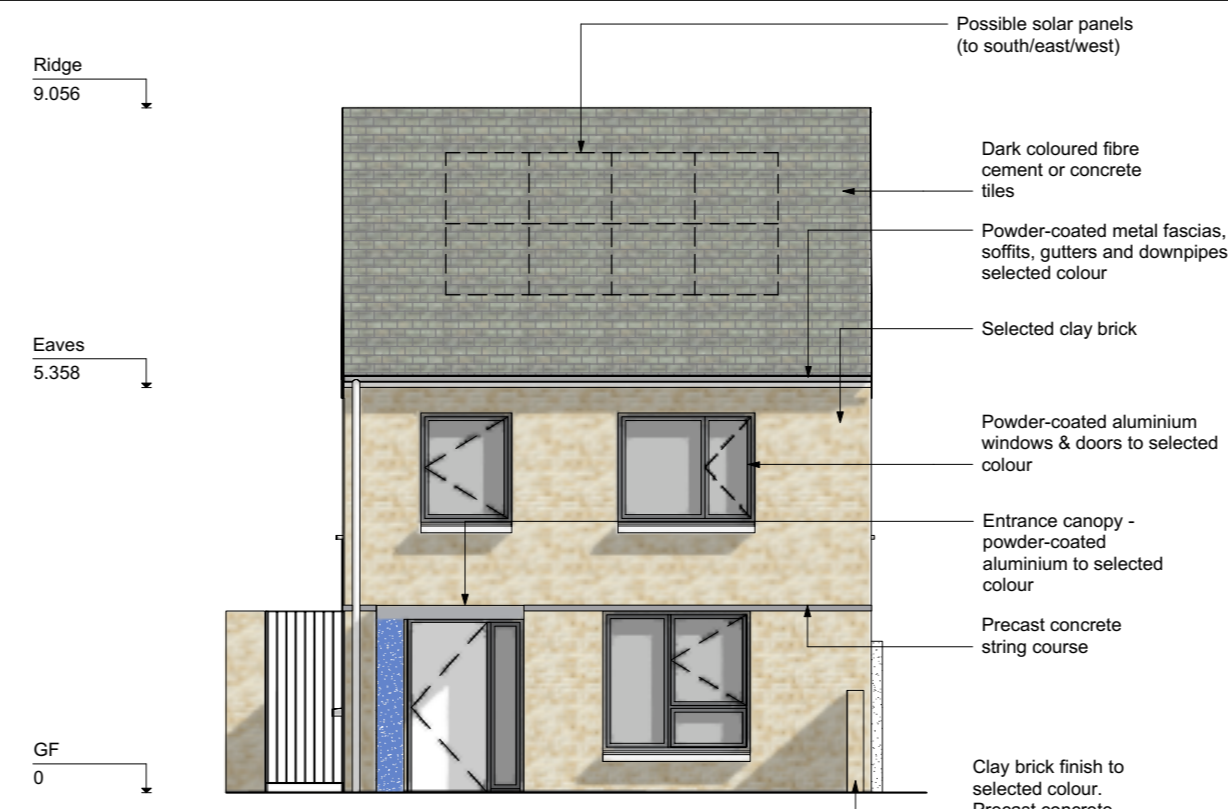
03B 4B/7P Type 04C - Schedule
Scale: 1:100



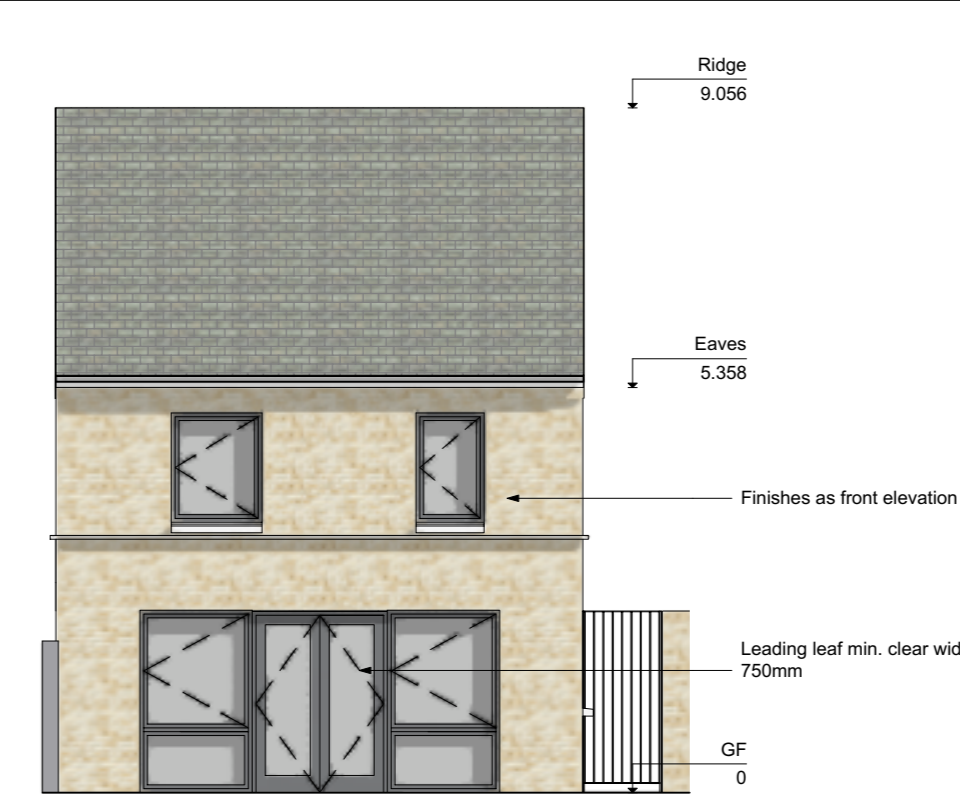
01C 2B/4P Terrace - Dwl. Type 02A - Elevation B
Scale: 1:100



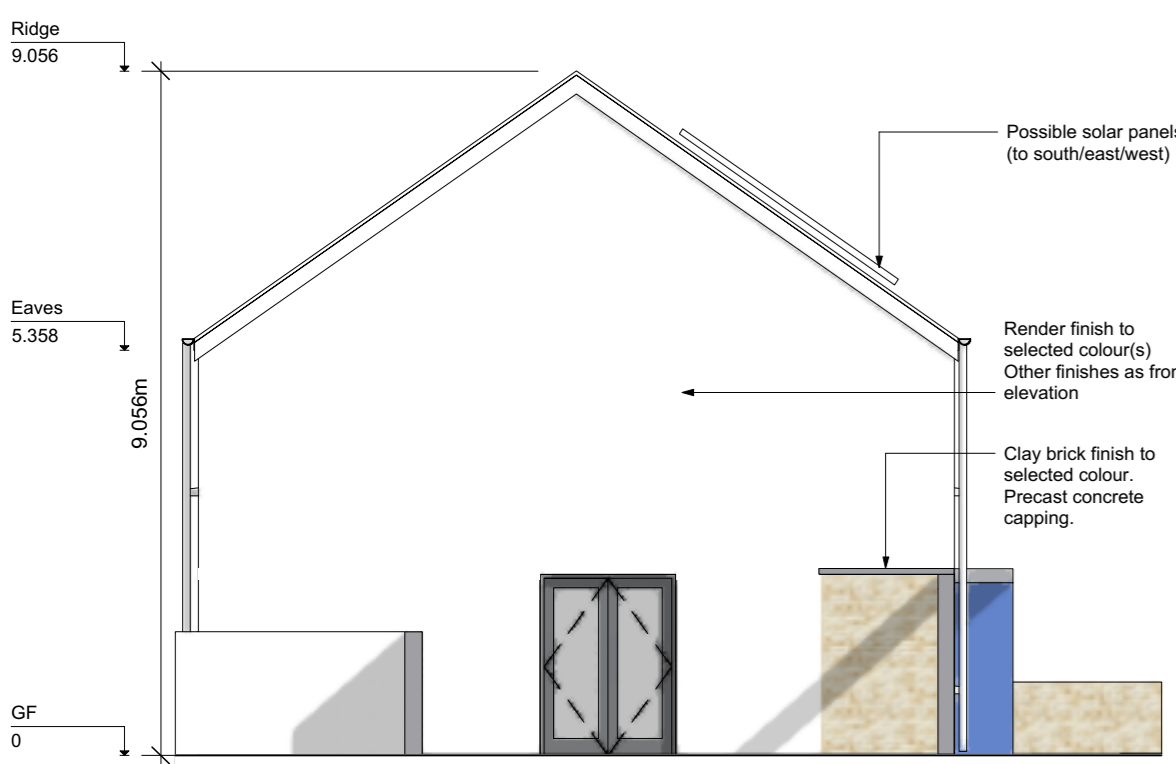
01D 2B/4P Terrace - Dwl. Type 02A - Elevation D
Scale: 1:100



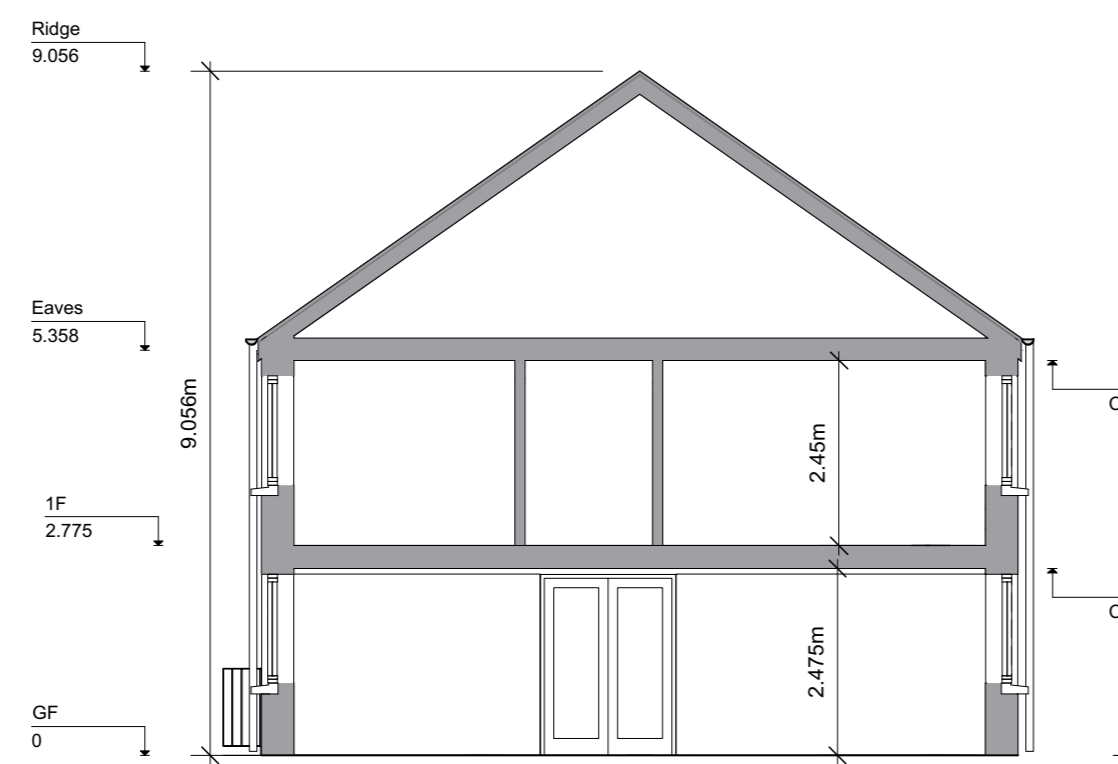
02C 4B/7P End Terrace - Dwl. Type 04C - Elevation A
Scale: 1:100



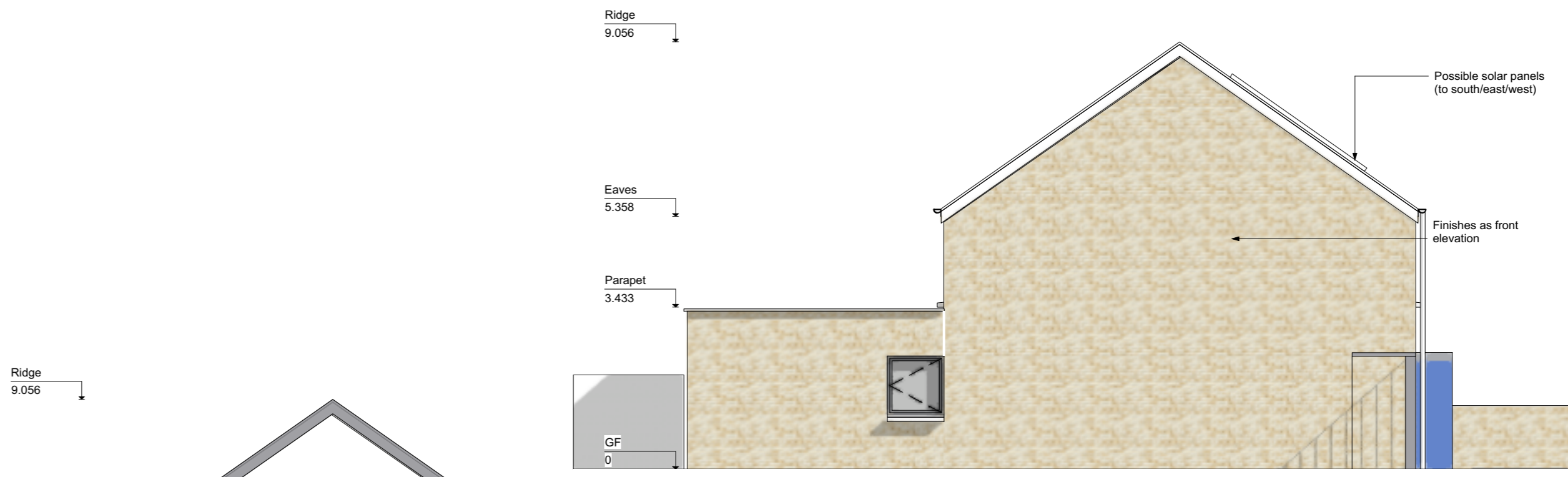
02D 4B/7P End Terrace - Dwl. Type 04C - Elevation B
Scale: 1:100



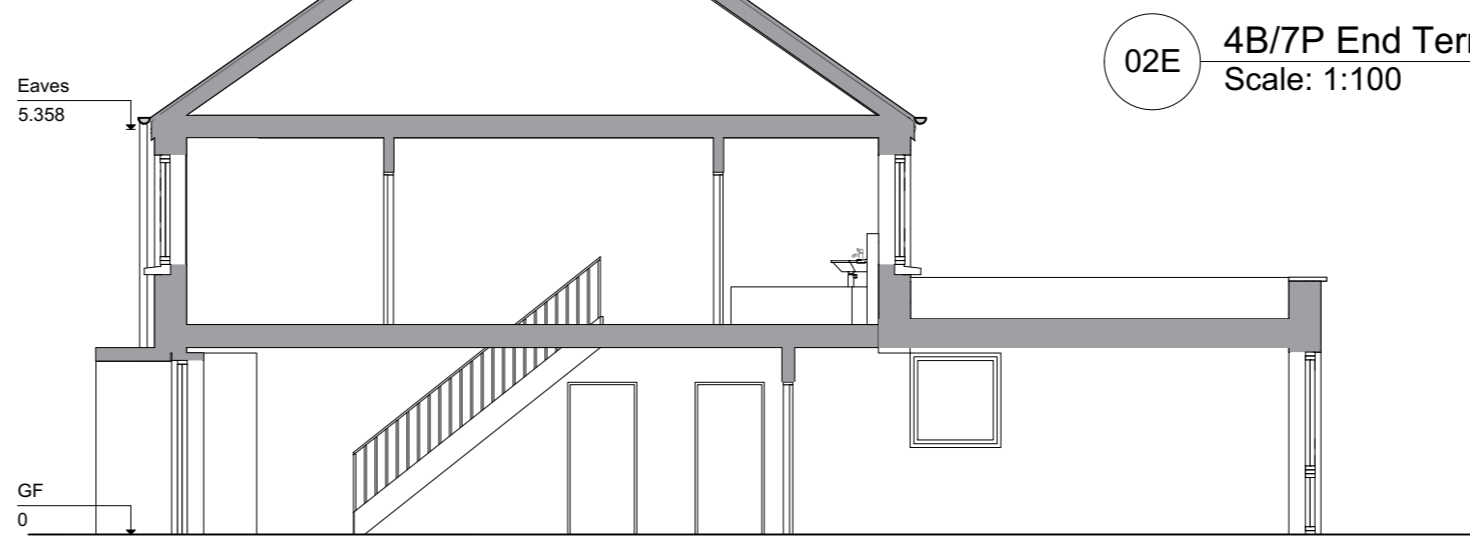
01E 2B/4P Terrace - Dwl. Type 02A - Elevation C
Scale: 1:100



01F 2B/4P Terrace - Dwl. Type 02A - Section A-A
Scale: 1:100



02E 4B/7P End Terrace - Dwl. Type 04C - Elevation C
Scale: 1:100



02F 4B/7P End Terrace - Dwl. Type 04C - Section A-A
Scale: 1:100

Use figured dimensions only. Do not scale drawings. Read in conjunction with specification and contract documents. Report any discrepancies in drawings to architect before starting work on site. Check all dimensions on site. This drawing is the copyright of Sean Harrington Architects and may be reproduced, in whole or part, without prior agreement.

REV	NOTES	DATE
03	4B7P special updated to revised KCC brief	25/09/21
04	Revised for KCC comments	18/11/21
05	Minor Amendments	24/11/21

SEÁN HARRINGTON ARCHITECTS		3rd Floor 12/122 Capital Street Dublin 1, Ireland	T: 01 8733 422 E: info@shba.ie
PROJECT: Social Housing Bundle 3 - Residential Development at Fortbarrington Road, Athy			
CLIENT: Kildare County Council			
DRAWING TITLE: Dwelling Types 2A & 4C			
PROJECT STAGE: Stage 02B	SCALE: As Shown	DATE: MAR'21	PROJECT NO: SHB3-ATY-AR-COA-DR-0015
DESIGNER: S2	DRAWN BY: SM	CHECKED BY: RG	REV: 05