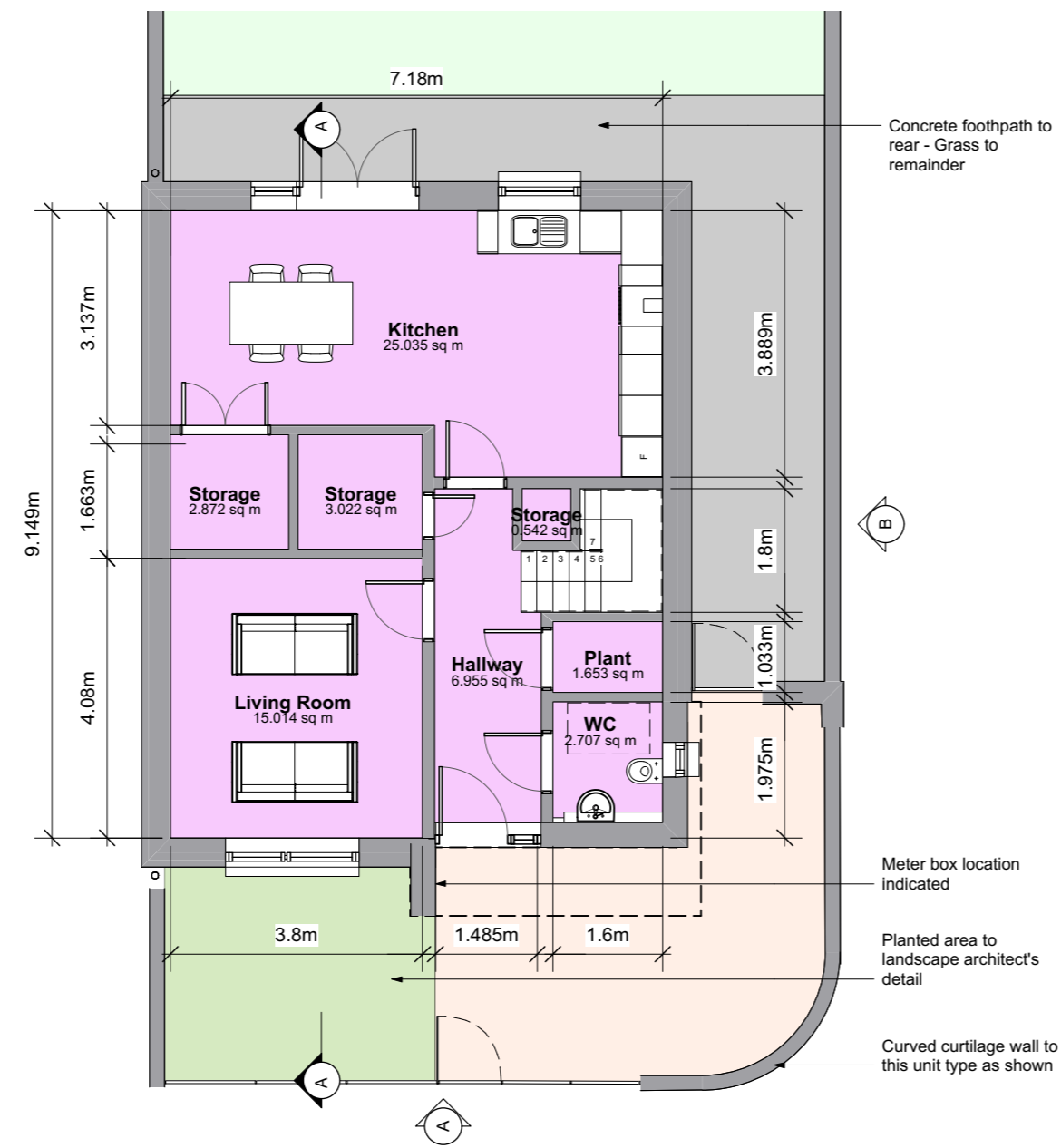
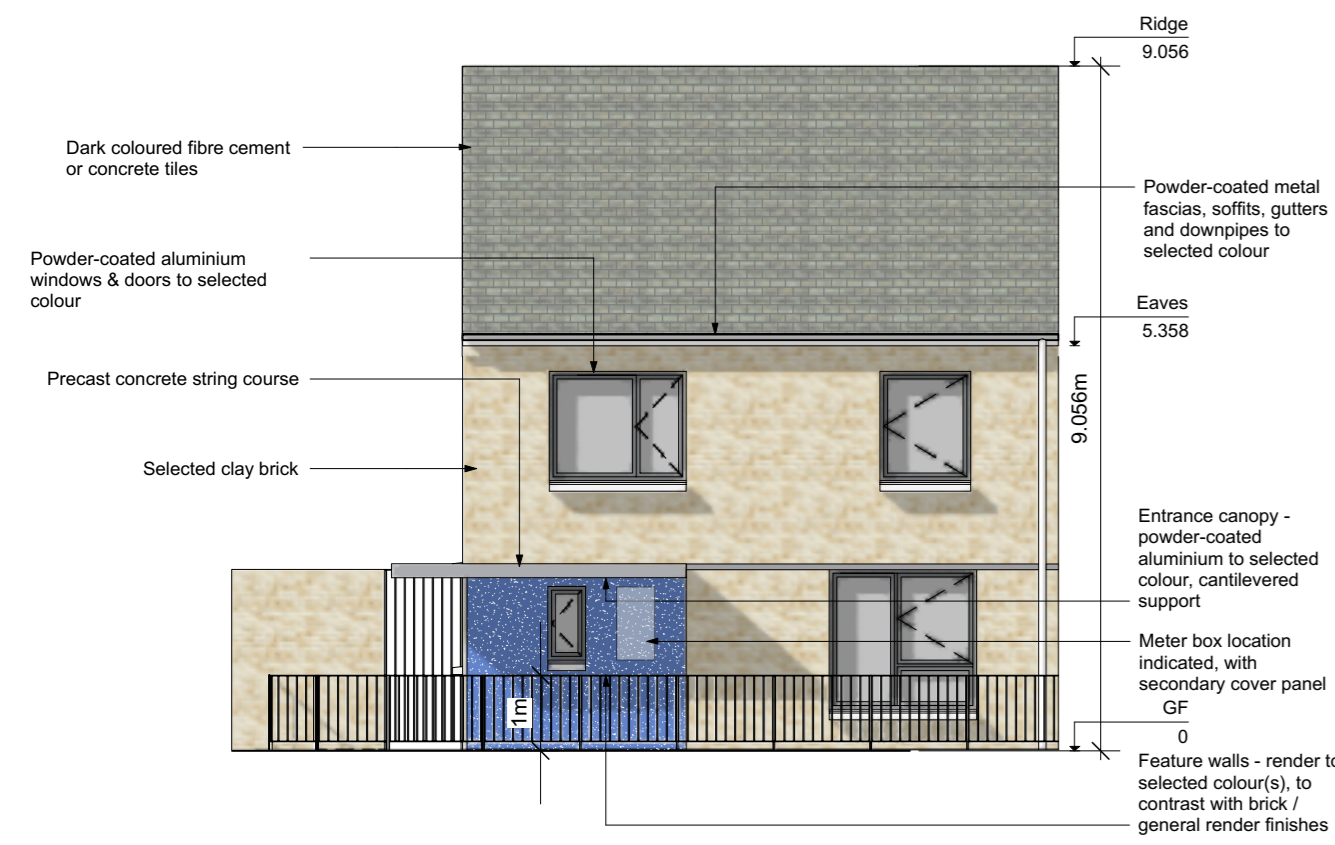


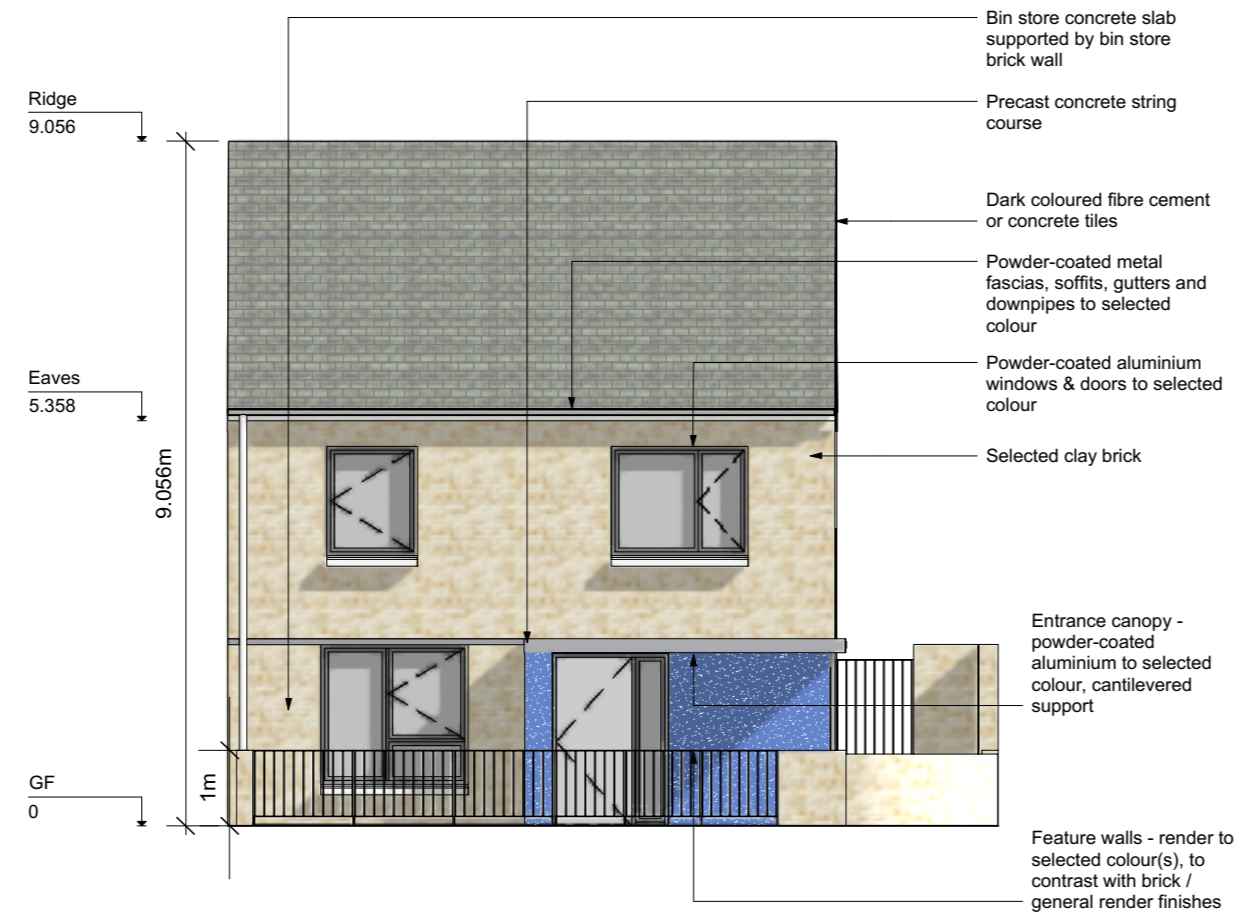
01A 4B/7P End Terrace Dw. Type 04A - Ground Floor Plan  
Scale: 1:100



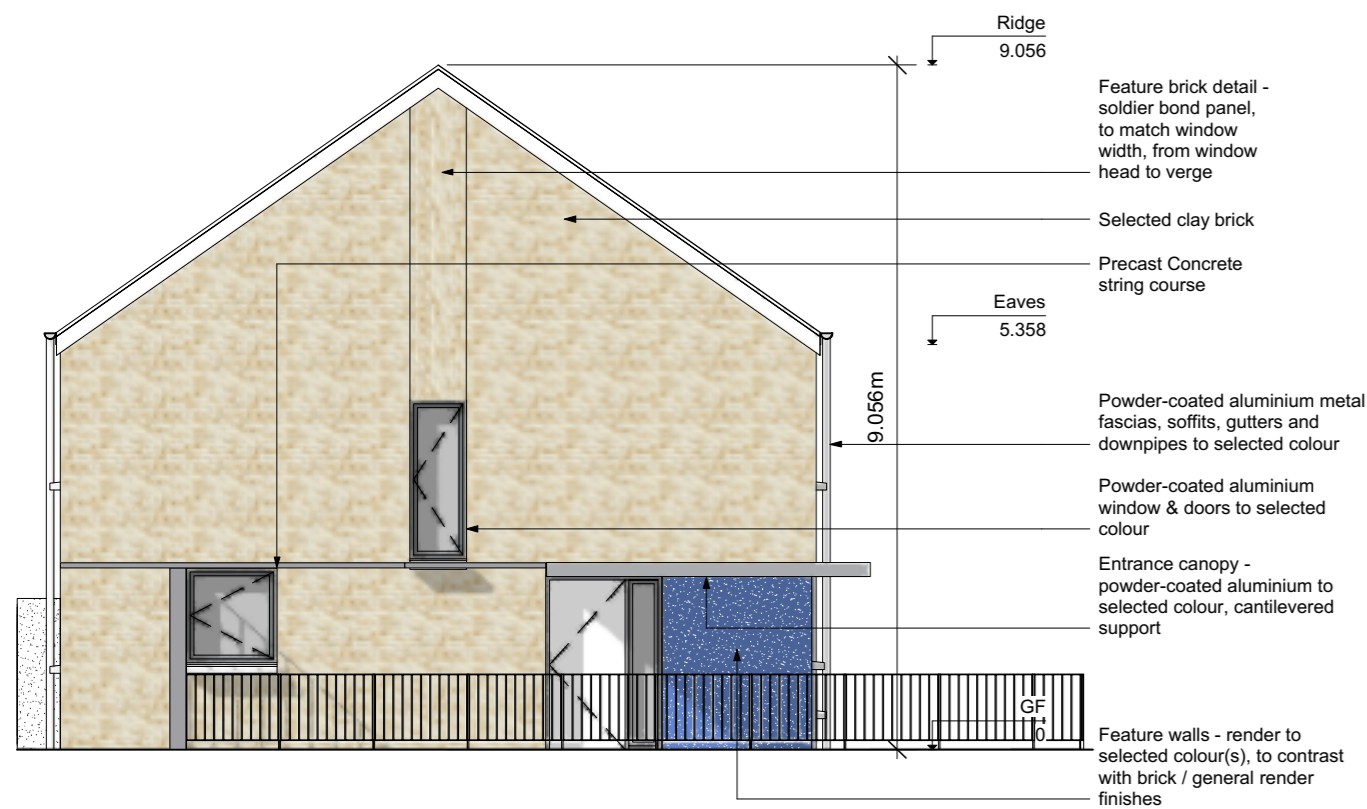
01B 4B/7P End Terrace Dw. Type 04B - Ground Floor Plan  
Scale: 1:100



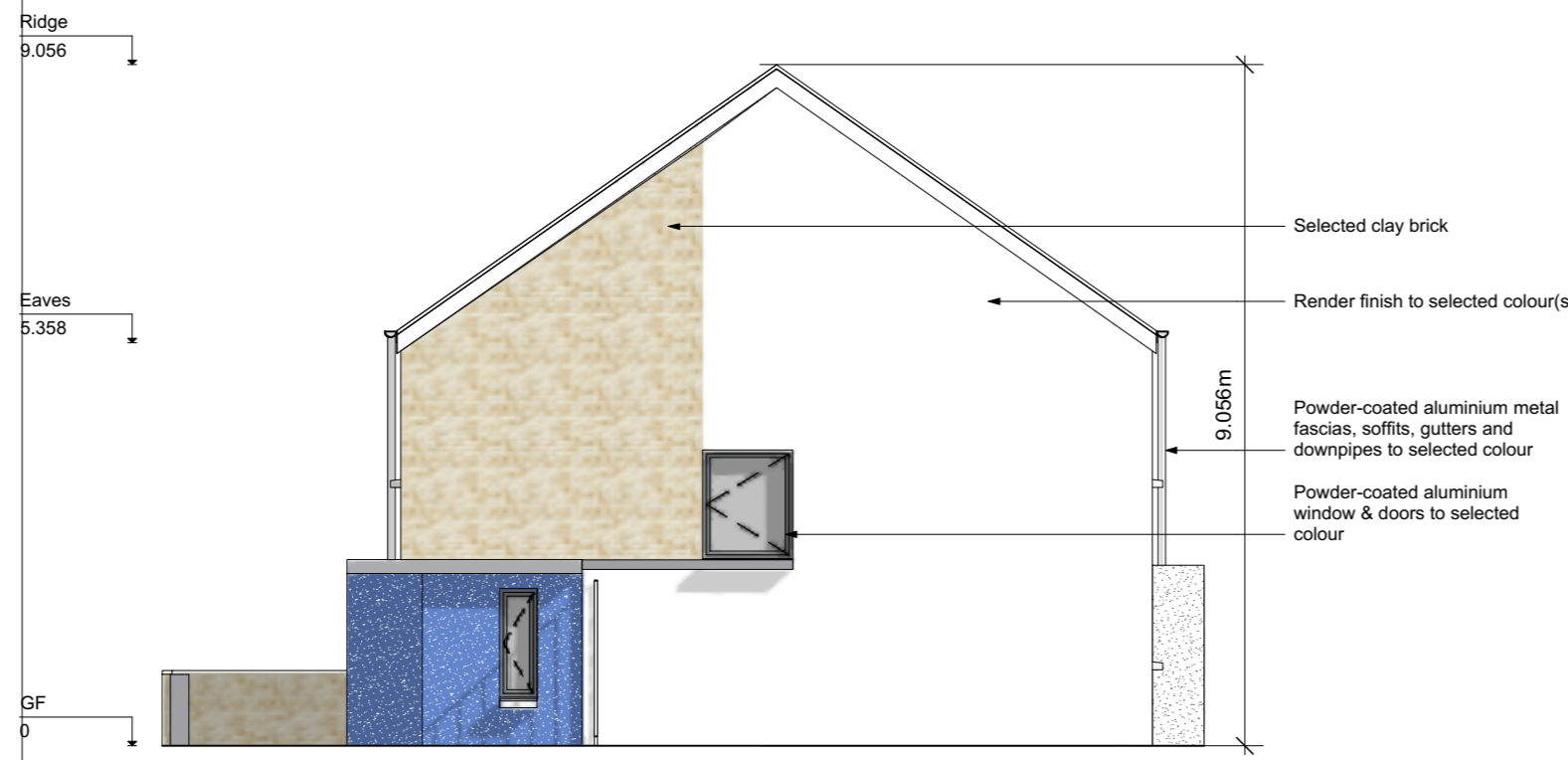
01C 4B/7P End Terrace Dw. Type 04A - Elevation A  
Scale: 1:100



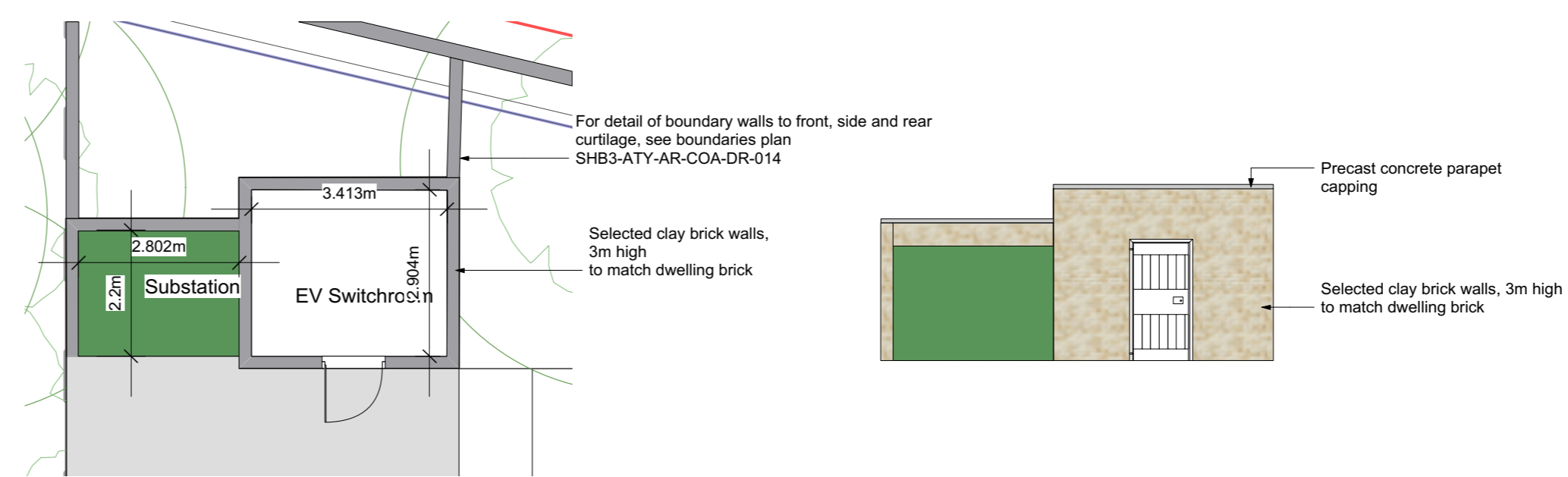
01D 4B/7P End Terrace Dw. Type 04B - Elevation A  
Scale: 1:100



01E 4B/7P End Terrace Dw. Type 04A - Elevation B  
Scale: 1:100



01F 4B/7P End Terrace Dw. Type 04B Elevation B  
Scale: 1:100



02A ESB Substation Plan  
Scale: 1:100

02B ESB Substation Elevation  
Scale: 1:100

Unit Type Schedule of Accommodation	
4 bed 2 storey dwelling (4B7P) (Var.01)	
Area compliance with KCC CDP & QHSC 2007	
Target Minimum floor areas	
Aggregate GIA	110.0m <sup>2</sup>
Aggregate Living	40.0m <sup>2</sup>
Aggregate Bedroom	43.0m <sup>2</sup>
Aggregate Storage	10.0m <sup>2</sup>
Min. Width (Liv/Kit)	3.8m
Min. Width Achieved	See Floor Plans
Min. Width (Bed)	2.8m
Min. Width Achieved	See Floor Plans
Area Breakdown	
GIA - 4B/7P GF	65.7m <sup>2</sup>
GIA - 4B/7P 1F	65.7m <sup>2</sup>
Aggregate GIA	131.4m <sup>2</sup>
Room Name	Area
Kitchen	25.0m <sup>2</sup>
Living Room	15.0m <sup>2</sup>
Aggregate Living	40.0m <sup>2</sup>
Bedroom	11.7m <sup>2</sup>
Bedroom	13.0m <sup>2</sup>
Bedroom	11.4m <sup>2</sup>
Bedroom	7.1m <sup>2</sup>
Aggregate Bedroom	43.2m <sup>2</sup>
Storage	3.0m <sup>2</sup>
Storage	3.0m <sup>2</sup>
Storage	0.5m <sup>2</sup>
Storage	1.9m <sup>2</sup>
Storage	2.1m <sup>2</sup>
Aggregate Storage	10.7m <sup>2</sup>
WC	4.3m <sup>2</sup>
WC	2.7m <sup>2</sup>
Plant	2.2m <sup>2</sup>

03A 4B/7P End Terrace Type 4A - Schedule  
Scale: 1:100

Unit Type Schedule of Accommodation	
4 bed 2 storey dwelling (4B7P) (Var.02)	
Area compliance with KCC CDP & QHSC 2007	
Target Minimum floor areas	
Aggregate GIA	110.0m <sup>2</sup>
Aggregate Living	40.0m <sup>2</sup>
Aggregate Bedroom	43.0m <sup>2</sup>
Aggregate Storage	10.0m <sup>2</sup>
Min. Width (Liv/Kit)	3.8m
Min. Width Achieved	See Floor Plans
Min. Width (Bed)	2.8m
Min. Width Achieved	See Floor Plans
Area Breakdown	
GIA - 4B/7P GF	64.9m <sup>2</sup>
GIA - 4B/7P 1F	65.7m <sup>2</sup>
Aggregate GIA	130.6m <sup>2</sup>
Room Name	Area
Kitchen	25.0m <sup>2</sup>
Living Room	15.0m <sup>2</sup>
Aggregate Living	40.0m <sup>2</sup>
Bedroom	11.7m <sup>2</sup>
Bedroom	13.0m <sup>2</sup>
Bedroom	11.4m <sup>2</sup>
Bedroom	7.1m <sup>2</sup>
Aggregate Bedroom	43.2m <sup>2</sup>
Storage	2.9m <sup>2</sup>
Storage	3.0m <sup>2</sup>
Storage	0.5m <sup>2</sup>
Storage	1.9m <sup>2</sup>
Storage	2.1m <sup>2</sup>
Aggregate Storage	10.5m <sup>2</sup>
WC	4.3m <sup>2</sup>
WC	2.7m <sup>2</sup>
Plant	1.7m <sup>2</sup>

03B 4B/7P End Terrace Type 4B Schedule  
Scale: 1:100

NOTE: For rear elevation, please refer to drawing no. SHB3-ATY-AR-COA-DR-0101/03A  
NOTE: Rear elevation for Type 04A is finished entirely in clay brick  
NOTE: For Section, please refer to drawing no. SHB3-ATY-AR-COA-DR-0101/04A

NOTE: For rear elevation, please refer to drawing no. SHB3-ATY-AR-COA-DR-0101/03A  
NOTE: For Section, please refer to drawing no. SHB3-ATY-AR-COA-DR-0101/04A

Use figured dimensions only. Do not scale drawings. Read in conjunction with specification and coordinate drawings. Report any discrepancies in drawings to Architect before starting work on site. Check all dimensions on site. This drawing is the copyright of Sean Harrington Architects, and may not be reproduced, in whole or part, without prior agreement.

REV	NOTES	DATE
02	Issued to RCPA	16/09/21
03	Revised for KCC comments	18/11/21
04	Minor amendments	24/11/21

<b>SEÁN HARRINGTON ARCHITECTS</b>		3rd Floor, 12/122 Capital Street, Dublin 1, Ireland	T: 01 8733 422 E: info@shba.ie
PROJECT: Social Housing Bundle 3 - Residential Development at Fortbarrington Road, Athy			
CLIENT: Kildare County Council			
DRAWING TITLE: Dwelling Type 04A, 04B & ESB Substation			
PROJECT STAGE: Stage 02B	SCALE: As Shown	DATE: MAR 21	PROJECT NO: SHB3-ATY-AR-COA-DR-0016
DESIGNER: S2	PREPARED BY: SM	CHECKED BY: RG	REV NO: 04