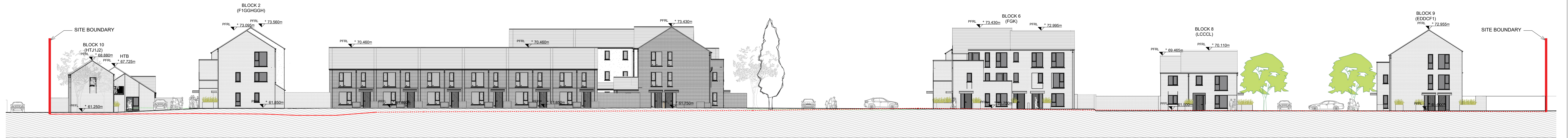
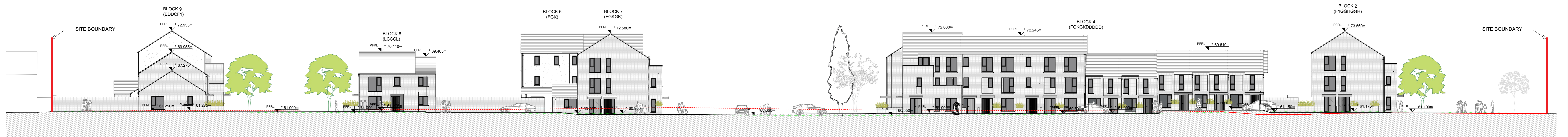




SECTION A-A 1:200 SCALE



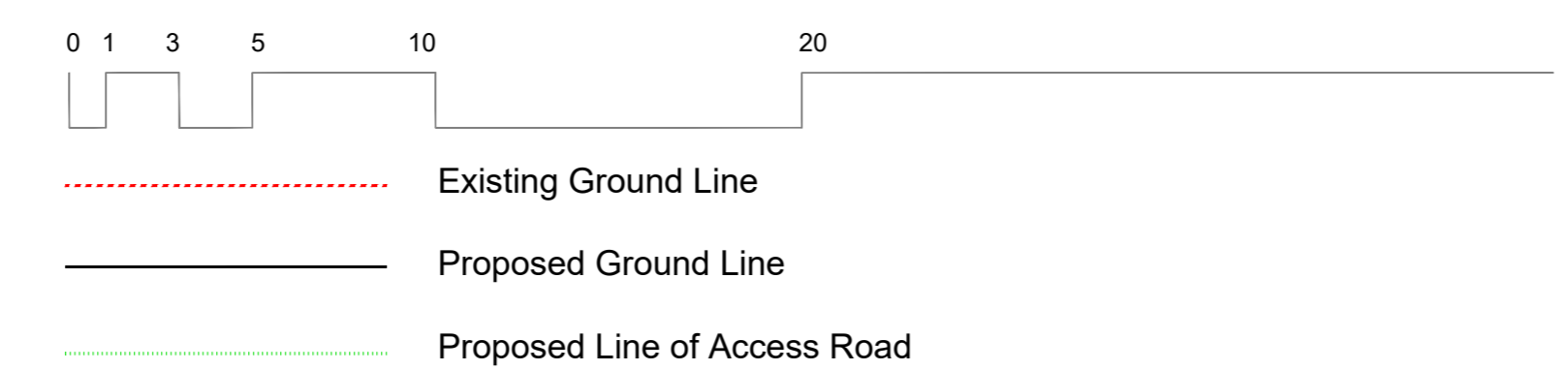
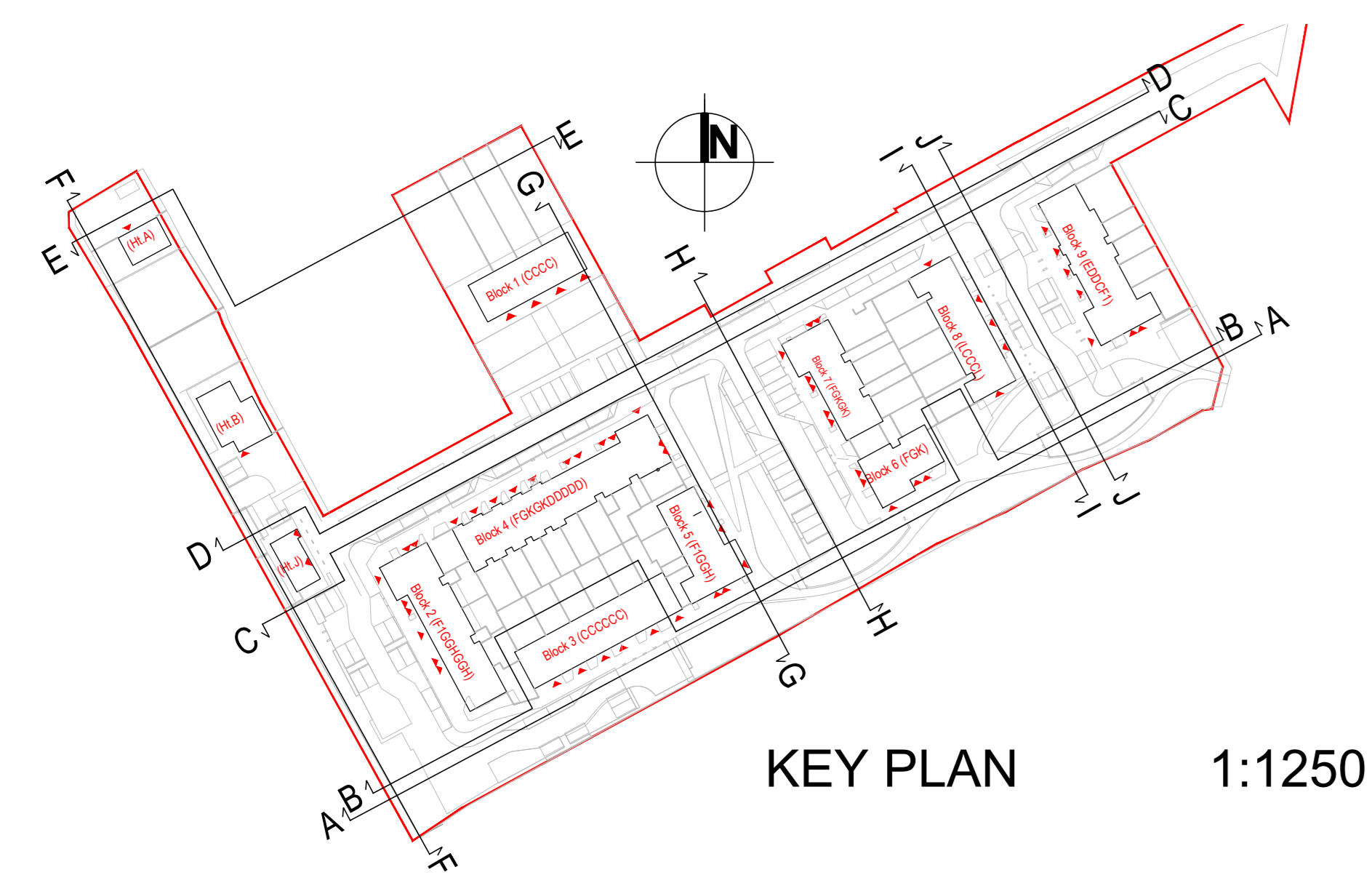
SECTION B-B 1:200 SCALE



SECTION C-C 1:200 SCALE



SECTION D-D 1:200 SCALE



Note: For proposed Finished Floor Levels (FFLs) and road levels, please refer to engineer's drawings. Levels indicated for guidance only; engineer's drawings take precedence for levels.

Rev.	By	Date	Description
C	AS	17/08/2022	Part 8 Issue Updated following client's comments
D	CS	01/09/2022	Block 7 Revisions
C	CS	11/09/2022	Part 8 Issue
B	CS	09/04/2022	Updated to include revised blocks 2, 5, 8 & 9



Mil House, Mill Street, Dundalk, Co. Louth
 +353 (0) 42 858 4465
 info@vandijkarchitects.com
 www.vandijkarchitects.com

Project Name: Site Sections A-A, B-B, C-C & D-D (Sheet 1)

Scale	Project No.	Client
1:200	2043-PA-008	Greenfields Maynooth
D AD	2043-PA-006.008	Kildare County Council
DC	VF	17/08/2022

All works to be carried out using proper materials which are fit for the use they are intended and for the condition in which they are to be used. All materials shall be of standard quality and shall be used in accordance with the manufacturer's instructions. The contractor shall be responsible for ensuring that the works are carried out in accordance with the specifications and drawings. The contractor shall be responsible for ensuring that the works are carried out in accordance with the specifications and drawings. The contractor shall be responsible for ensuring that the works are carried out in accordance with the specifications and drawings.