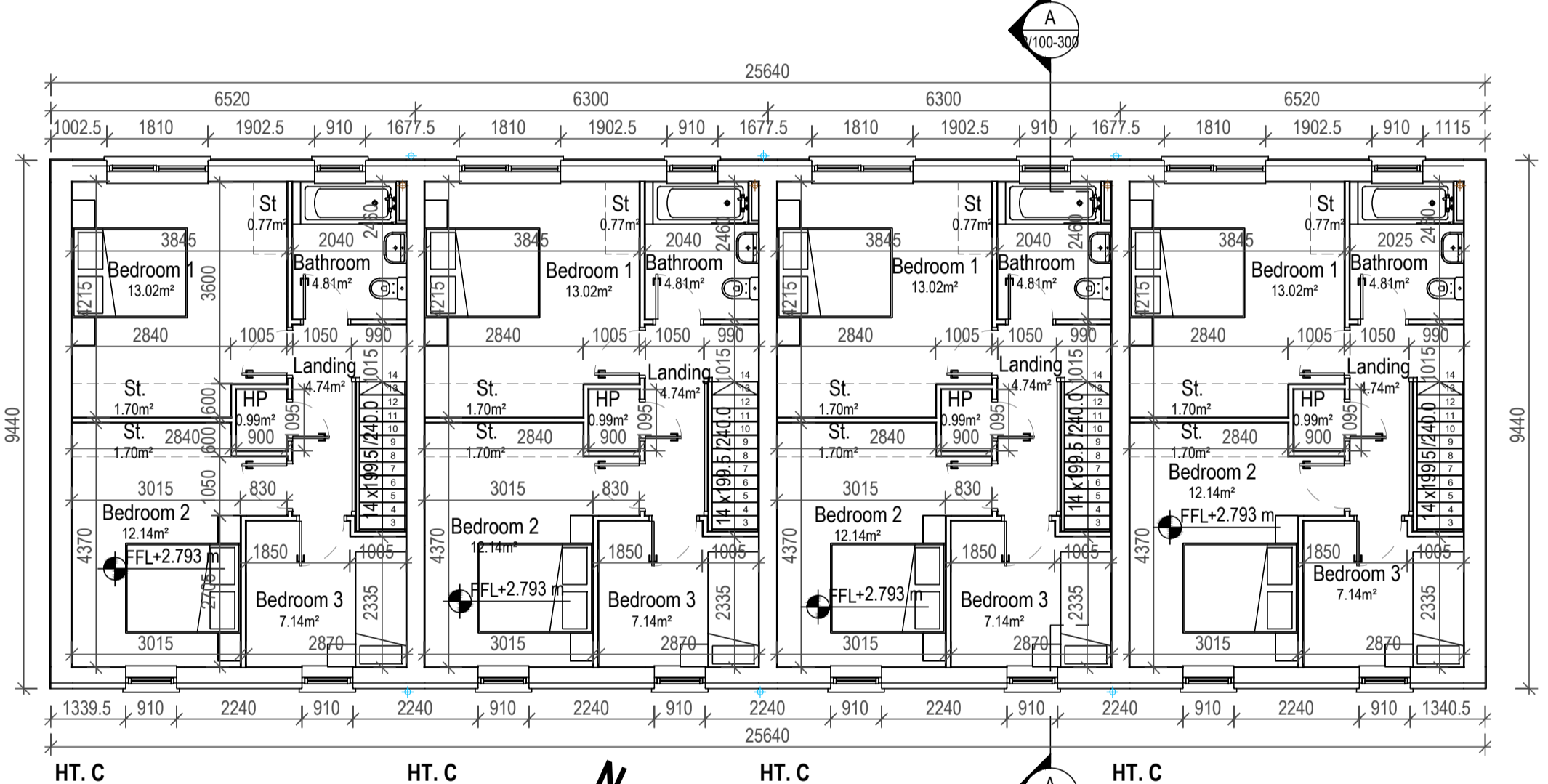
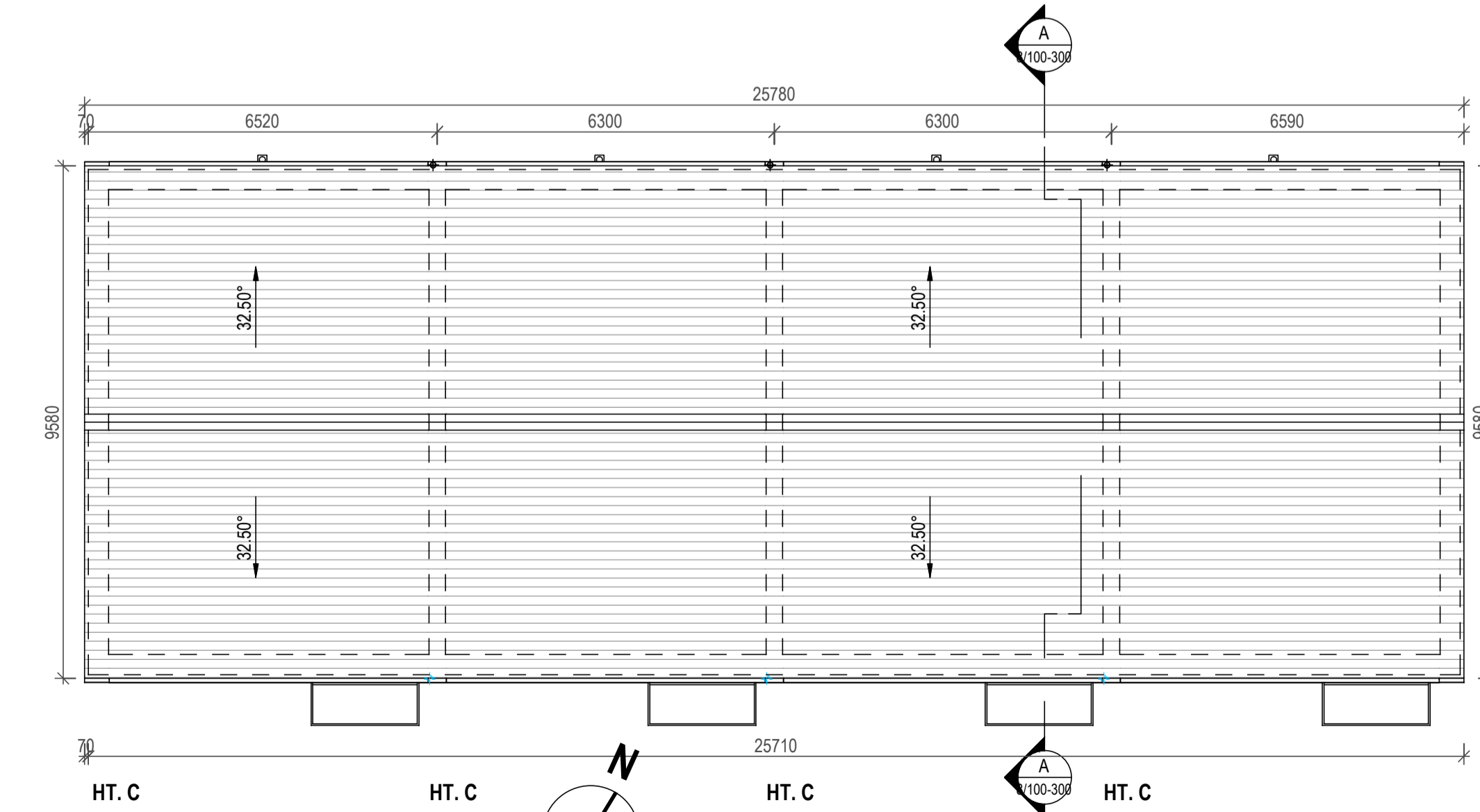


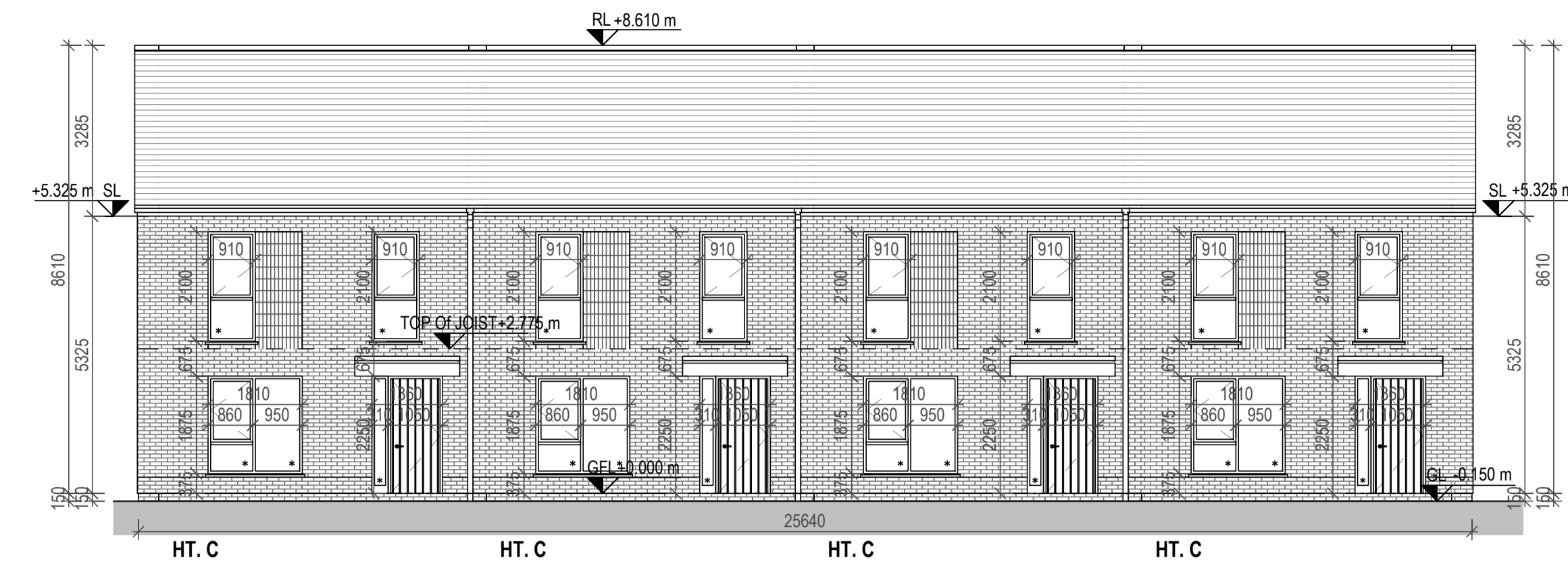
1 Ground Floor Plan  
1:100



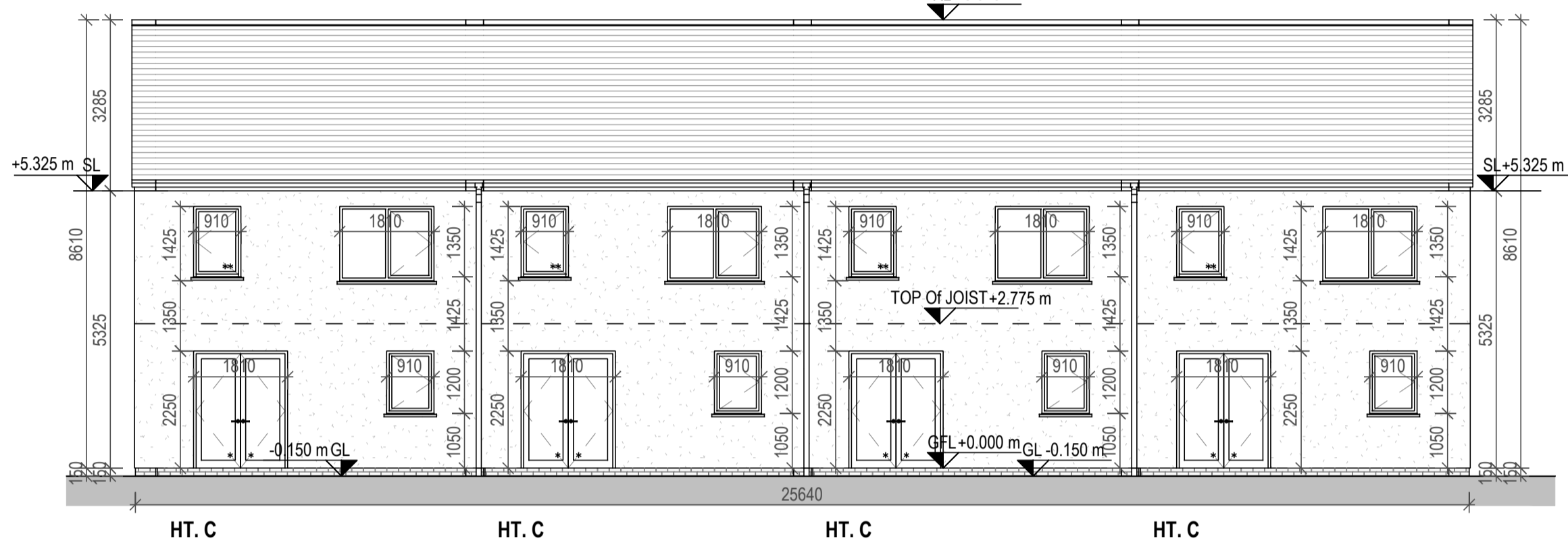
2 First Floor Plan  
1:100



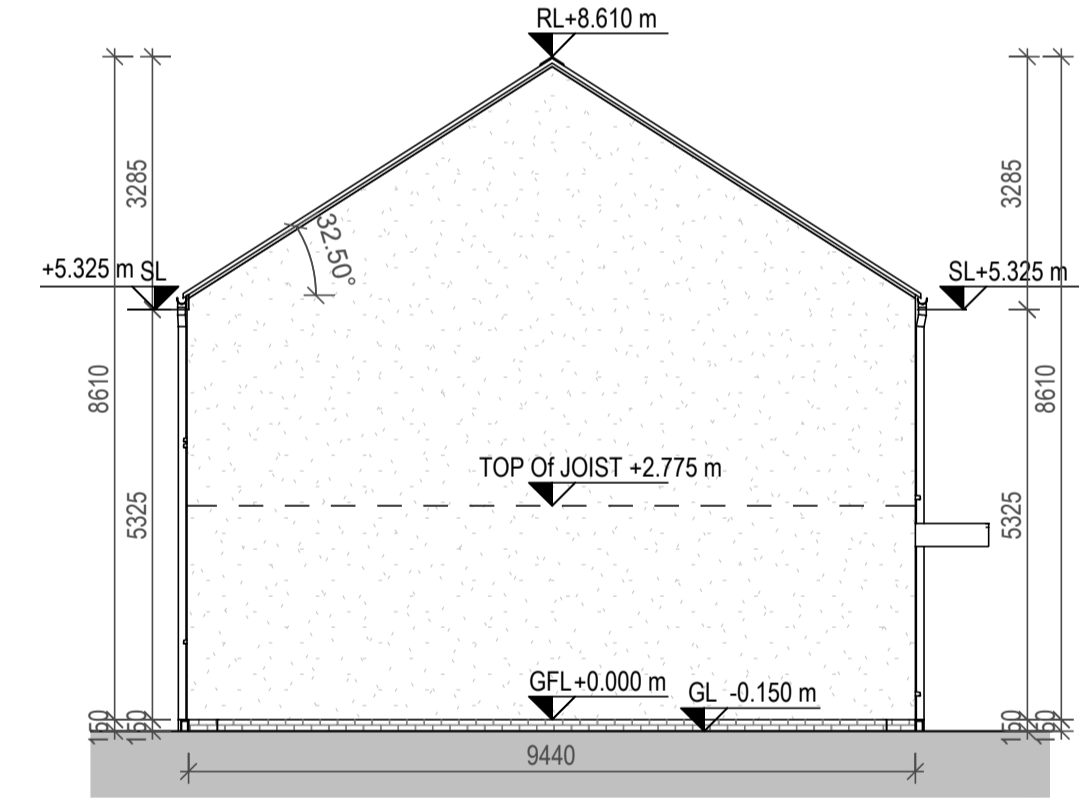
3 Roof Plan  
1:100



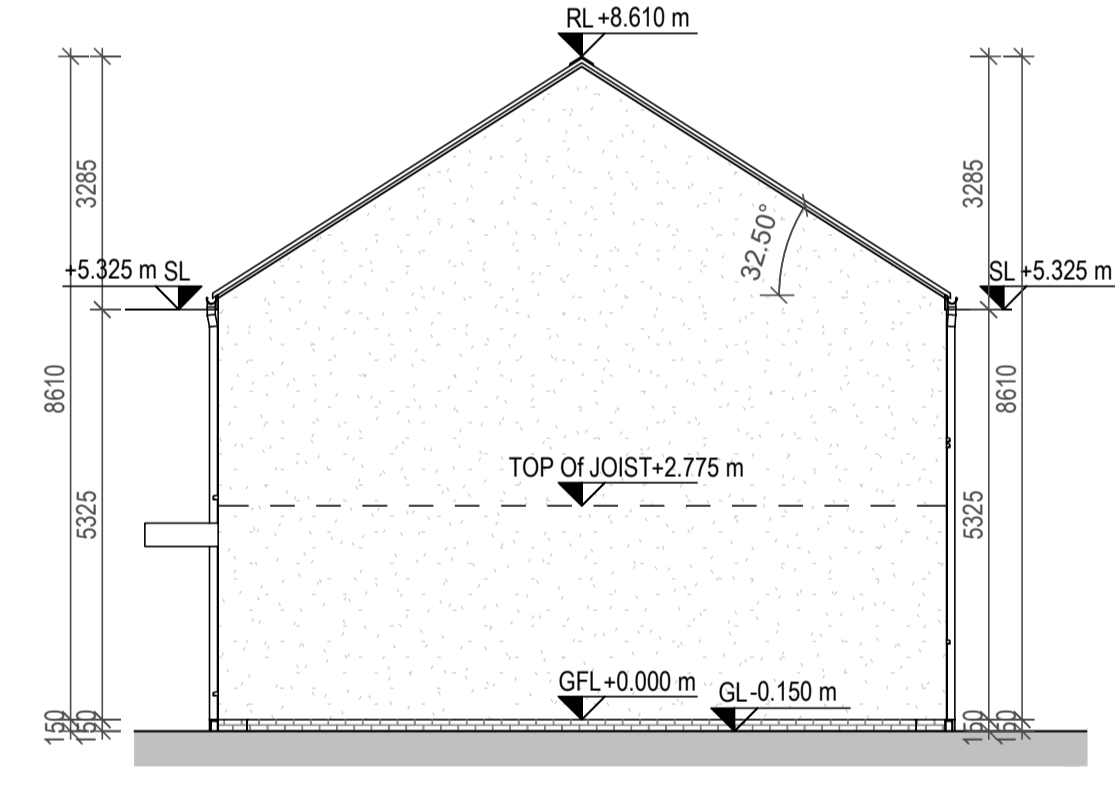
4 Front Elevation  
1:100



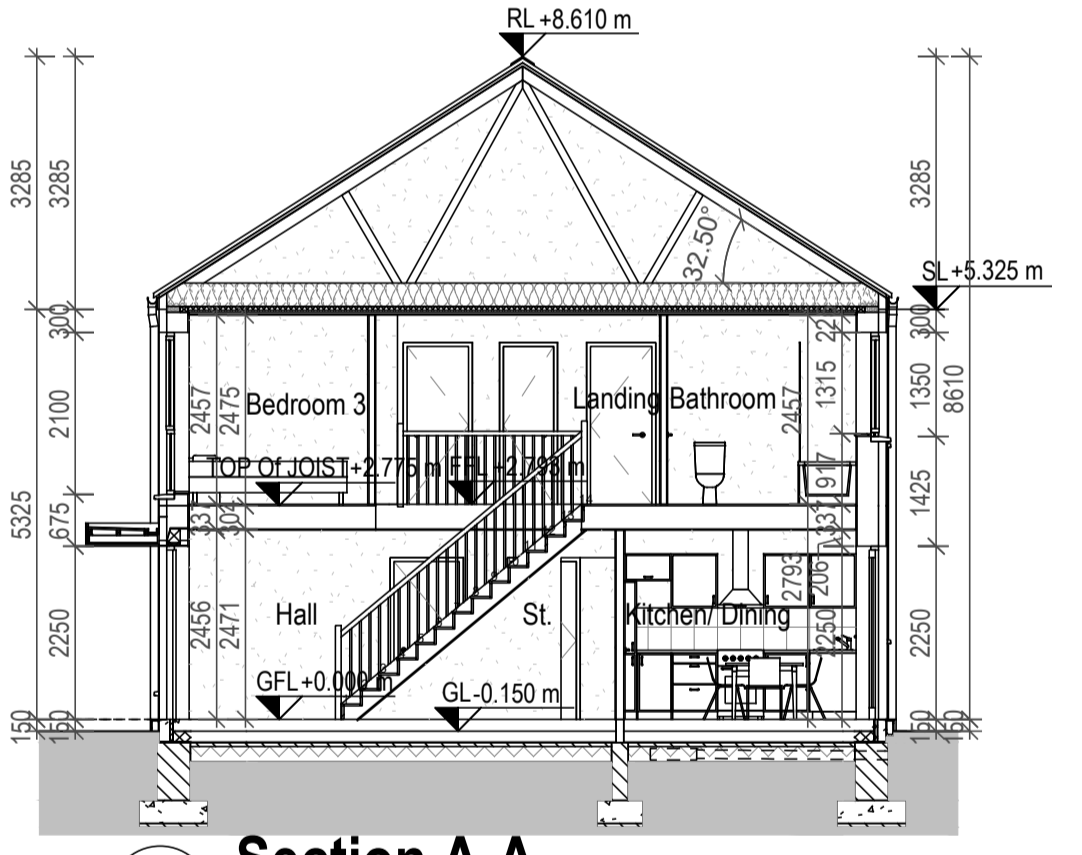
5 Rear Elevation  
1:100



6 Side Elevation 1  
1:100



7 Side Elevation 2  
1:100



8 Section A-A  
1:100

Ht. C Room Schedule	
Name	Area
Bathroom	4.81 m <sup>2</sup>
Hall	7.58 m <sup>2</sup>
HP	0.99 m <sup>2</sup>
Landing	4.74 m <sup>2</sup>
WC	2.10 m <sup>2</sup>
20.23 m <sup>2</sup>	
Kitchen/ Dining	18.70 m <sup>2</sup>
Living Room	15.33 m <sup>2</sup>
1 Living Area	34.03 m <sup>2</sup>
Bedroom 1	13.02 m <sup>2</sup>
Bedroom 2	12.14 m <sup>2</sup>
Bedroom 3	7.14 m <sup>2</sup>
2 Bedroom	32.30 m <sup>2</sup>
St	0.77 m <sup>2</sup>
St.	1.70 m <sup>2</sup>
St.	1.70 m <sup>2</sup>
St.	2.25 m <sup>2</sup>
St.	2.65 m <sup>2</sup>
3 Storage	9.07 m <sup>2</sup>
	95.62 m <sup>2</sup>

Gross Floor Area	
Level	Area
GFL	51.42 m <sup>2</sup>
FFL	49.21 m <sup>2</sup>
	100.63 m <sup>2</sup>

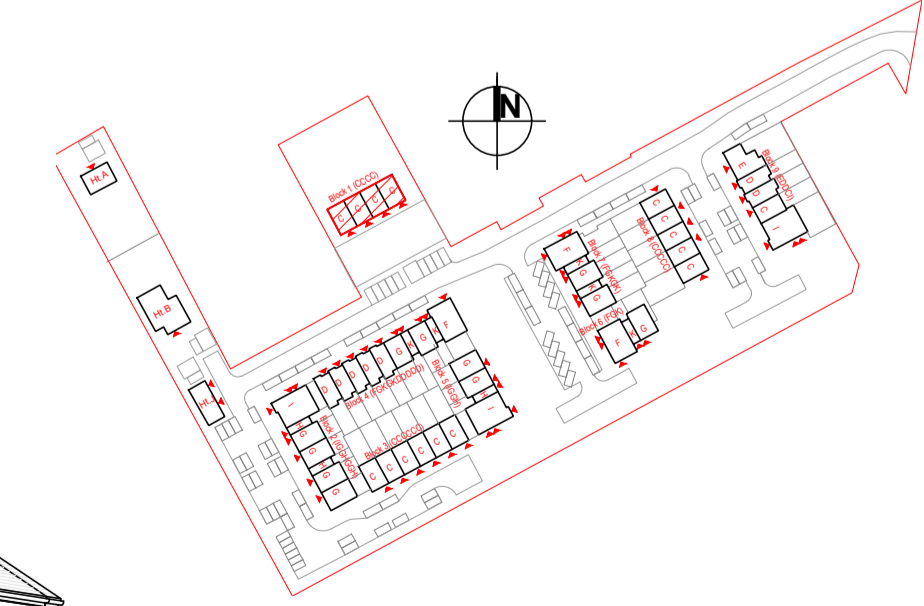
Quality Housing for Sustainable Communities space provision

Ht.C	Dwelling Type	Gross Floor Area	Minimum Main Living Room Area	Aggregate Living Area	Aggregate Bedroom Area	Storage Area
Target	3 Bed 5P House	100	13	34	32	9
Proposed	3 Bed 5P House	100.6	15.3	34	32.4	9.3

PLEASE NOTE:  
Minimum unobstructed living room width 3.8m.  
Main bedroom area 13m<sup>2</sup>, Double room 11.4m<sup>2</sup> (2.8m minimum width), Single room 7.1m<sup>2</sup> (2.1m minimum width)



9 3D View 1



Key Plan  
1:2500

Rev.	By	Date	Description
A	VM	20/10/2021	First Issue For DT



Mill House, Mill Street, Dundalk, Co. Kildare (0) 42 935 4466		info@vandijkarchitects.com www.vandijkarchitects.com	
Drawing Title: BL1 (CCCC) General Plans & Elevations			
Scale: 1:100	Drawing Number: 20/10/2021-PA-BL1-100-3500	Greenfields Maynooth	
Revision: A	Drawn: VM	Kildare Co. Co.	
Drawn by: MS	Drawn by: VM	Date:	October 2022

All works to be carried out using proper materials which are fit for the use they are intended and for the condition in which they are to be used. All materials used in connection with the works to comply with the construction products regulations 2011 and the harmonised technical specifications/standards that fall within the remit of the CPR no. 305/2011. Figured dimensions must be used in preference to scaled dimensions. Any dimensional discrepancies must be reported to the Architect immediately. This drawing remains the copyright of van Dijk Architects. It must not be used for any purpose or otherwise without the express permission of this practice. Do not copy or redistribute these drawings or any other information without the expressed approval of van Dijk Architects.