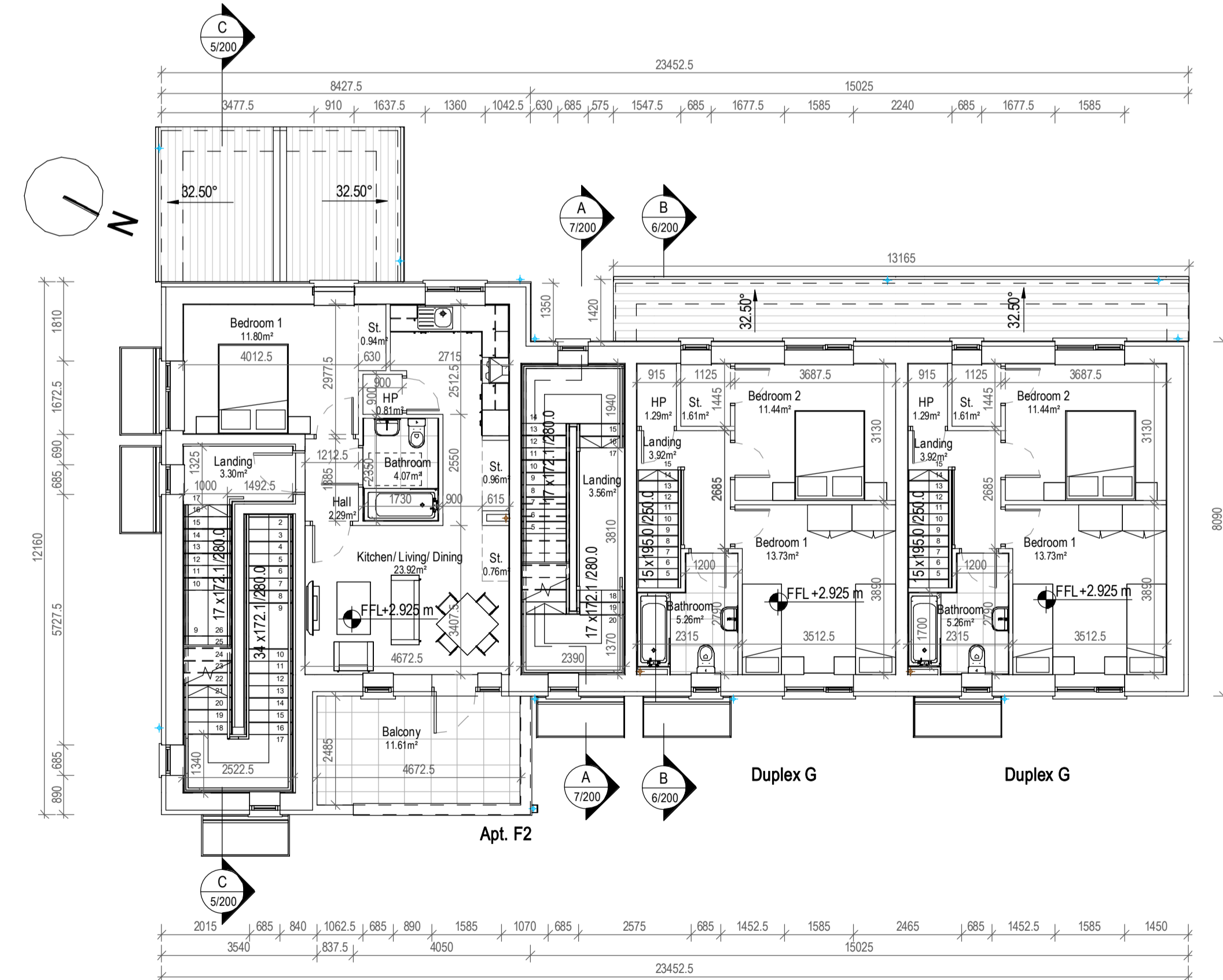


1 Ground Floor Plan  
1 : 100



2 First Floor Plan  
1 : 100

| Quality Housing for Sustainable Communities space provision |                |                  |                               |                       |                        |              |
|---|----------------|------------------|-------------------------------|-----------------------|------------------------|--------------|
| Apt.F1.1 UD   | Dwelling Type  | Gross Floor Area | Minimum Main Living Room Area | Aggregate Living Area | Aggregate Bedroom Area | Storage Area |
| Target  | 2 Bed 3P House | 73               | 13                            | 28                    | 20                     | 6            |
| Proposed  | 2 Bed 3P House | 75.24            | 13                            | 28.10                 | 20.18                  | 6.02         |

PLEASE NOTE:  
Minimum unobstructed living room width 3.8m.  
Main bedroom area 13m<sup>2</sup>, Double room 11.4m<sup>2</sup> (2.8m minimum width), Single room 7.1m<sup>2</sup> (2.1m minimum width)

| Quality Housing for Sustainable Communities space provision |                |                  |                               |                       |                        |              |
|---|----------------|------------------|-------------------------------|-----------------------|------------------------|--------------|
| Apt.F2  | Dwelling Type  | Gross Floor Area | Minimum Main Living Room Area | Aggregate Living Area | Aggregate Bedroom Area | Storage Area |
| Target  | 1 Bed 2P House | 45               | 11                            | 23                    | 11                     | 3            |
| Proposed  | 1 Bed 2P House | 47.39            | 11                            | 23.92                 | 11.80                  | 3.47         |

PLEASE NOTE:  
Minimum unobstructed living room width 3.8m.  
Main bedroom area 13m<sup>2</sup>, Double room 11.4m<sup>2</sup> (2.8m minimum width), Single room 7.1m<sup>2</sup> (2.1m minimum width)

| Quality Housing for Sustainable Communities space provision |                |                  |                               |                       |                        |              |
|---|----------------|------------------|-------------------------------|-----------------------|------------------------|--------------|
| Duplex G  | Dwelling Type  | Gross Floor Area | Minimum Main Living Room Area | Aggregate Living Area | Aggregate Bedroom Area | Storage Area |
| Target  | 2 Bed 4P House | 85               | 13                            | 30                    | 25                     | 6            |
| Proposed  | 2 Bed 4P House | 88.18            | 13                            | 31.57                 | 25.17                  | 8.44         |

PLEASE NOTE:  
Minimum unobstructed living room width 3.6m.  
Main bedroom area 13m<sup>2</sup>, Double room 11.4m<sup>2</sup> (2.8m minimum width), Single room 7.1m<sup>2</sup> (2.1m minimum width)

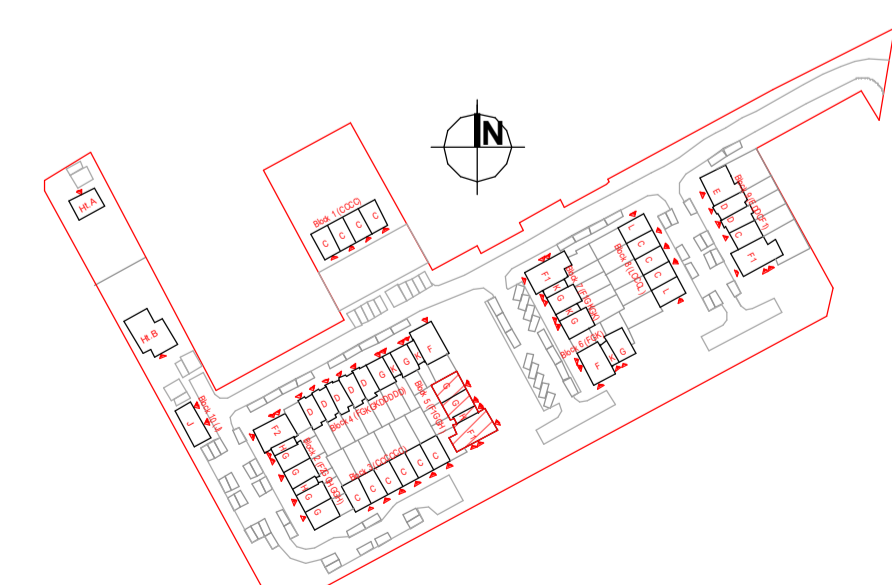
| Apt. H Room Schedule            |                      |
|---------------------------------|----------------------|
| Name                            | Area                 |
| Bathroom                        | 5.06 m <sup>2</sup>  |
| Corridor                        | 10.09 m <sup>2</sup> |
| Hall                            | 16.70 m <sup>2</sup> |
| Landing                         | 3.56 m <sup>2</sup>  |
| Landing                         | 3.22 m <sup>2</sup>  |
| HP                              | 1.59 m <sup>2</sup>  |
|                                 | 40.23 m <sup>2</sup> |
| Bedroom 2                       | 13.44 m <sup>2</sup> |
| Master Bedroom                  | 11.68 m <sup>2</sup> |
| Bedroom                         | 25.11 m <sup>2</sup> |
| Living Room/<br>Kitchen/ Dining | 34.82 m <sup>2</sup> |
| Liv                             | 34.82 m <sup>2</sup> |
| St.                             | 1.96 m <sup>2</sup>  |
| St.                             | 3.01 m <sup>2</sup>  |
| St.                             | 0.90 m <sup>2</sup>  |
| St.                             | 5.86 m <sup>2</sup>  |

| Duplex G Room Schedule   |                      |
|--------------------------|----------------------|
| Name                     | Area                 |
| Bathroom                 | 5.26 m <sup>2</sup>  |
| Corridor                 | 3.92 m <sup>2</sup>  |
| Hall                     | 7.24 m <sup>2</sup>  |
| WC                       | 2.97 m <sup>2</sup>  |
| HP                       | 1.29 m <sup>2</sup>  |
|                          | 20.68 m <sup>2</sup> |
| Kitchen & Living<br>Room | 31.57 m <sup>2</sup> |
| 1. Liv                   | 31.57 m <sup>2</sup> |
| Bedroom 2                | 11.44 m <sup>2</sup> |
| Bedroom 1                | 13.73 m <sup>2</sup> |
| 2 Bedroom                | 25.17 m <sup>2</sup> |
| Utility/St.              | 5.54 m <sup>2</sup>  |
| St.                      | 1.61 m <sup>2</sup>  |
| St.                      | 1.06 m <sup>2</sup>  |
| 3 Storage                | 8.21 m <sup>2</sup>  |

| Apt. F1 UD Room Schedule        |                      |
|---------------------------------|----------------------|
| Name                            | Area                 |
| Hall                            | 10.80 m <sup>2</sup> |
| Wet Room                        | 6.66 m <sup>2</sup>  |
| HP                              | 1.08 m <sup>2</sup>  |
|                                 | 18.54 m <sup>2</sup> |
| Kitchen/ Dining/<br>Living Room | 28.10 m <sup>2</sup> |
| 1. Liv                          | 28.10 m <sup>2</sup> |
| Bedroom 1                       | 7.03 m <sup>2</sup>  |
| Bedroom 2                       | 13.07 m <sup>2</sup> |
| 2. Bedroom                      | 20.10 m <sup>2</sup> |
| St.                             | 0.42 m <sup>2</sup>  |
| St.                             | 1.62 m <sup>2</sup>  |
| St.                             | 1.38 m <sup>2</sup>  |
| St.                             | 0.36 m <sup>2</sup>  |
| St.                             | 1.78 m <sup>2</sup>  |
| St.                             | 0.57 m <sup>2</sup>  |
| 3. St.                          | 6.12 m <sup>2</sup>  |

| Apt. F2 Room Schedule      |                      |
|----------------------------|----------------------|
| Name                       | Area                 |
| Bathroom                   | 4.07 m <sup>2</sup>  |
| Balcony                    | 11.61 m <sup>2</sup> |
| Hall                       | 3.30 m <sup>2</sup>  |
| HP                         | 0.81 m <sup>2</sup>  |
| Landing                    | 3.30 m <sup>2</sup>  |
| Hall                       | 2.29 m <sup>2</sup>  |
|                            | 25.37 m <sup>2</sup> |
| Kitchen/ Living/<br>Dining | 23.92 m <sup>2</sup> |
| 1. Liv                     | 23.92 m <sup>2</sup> |
| Bedroom 1                  | 11.80 m <sup>2</sup> |
| 2. Bedroom                 | 11.80 m <sup>2</sup> |
| St.                        | 0.96 m <sup>2</sup>  |
| St.                        | 1.23 m <sup>2</sup>  |
| St.                        | 0.94 m <sup>2</sup>  |
| St.                        | 0.76 m <sup>2</sup>  |
| 3. St.                     | 3.89 m <sup>2</sup>  |

| Apt. F3 Room Schedule           |                      |
|---------------------------------|----------------------|
| Name                            | Area                 |
| Balcony                         | 8.16 m <sup>2</sup>  |
| Bathroom                        | 4.07 m <sup>2</sup>  |
| Landing                         | 3.38 m <sup>2</sup>  |
| Hall                            | 2.31 m <sup>2</sup>  |
| Hall                            | 3.67 m <sup>2</sup>  |
| HP                              | 0.81 m <sup>2</sup>  |
|                                 | 22.40 m <sup>2</sup> |
| Kitchen/ Living/<br>Dining Room | 29.60 m <sup>2</sup> |
| 1. Liv                          | 29.60 m <sup>2</sup> |
| Bedroom 1                       | 11.80 m <sup>2</sup> |
| 2. Bedroom                      | 11.80 m <sup>2</sup> |
| St.                             | 0.62 m <sup>2</sup>  |
| St.                             | 0.94 m <sup>2</sup>  |
| St.                             | 1.23 m <sup>2</sup>  |
| St.                             | 0.96 m <sup>2</sup>  |
| St.                             | 0.54 m <sup>2</sup>  |
| 3. St.                          | 4.29 m <sup>2</sup>  |



Key Plan  
1 : 2500

| Rev. | By | Date       | Description              |
|------|----|------------|--------------------------|
| A    | JC | 16/08/2022 | First Issue For Planning |



Mill House, Mill Street, Dundalk, Co. Louth  
+353 (0) 42 935 4466  
info@vandijkarchitects.com  
www.vandijkarchitects.com

Drawing Title: BL5 (FIGGH)  
Ground Floor Plan & First Floor Plan

| Rev. | By | Date       | Description         |
|------|----|------------|---------------------|
| 1    | MS | 16/08/2022 | 2043-PA-BL5-100     |
| 2    | MS | 16/08/2022 | 2043-PA-BL5-100-200 |
| 3    | MS | 16/08/2022 | 2043-PA-BL5-100-200 |

All works to be carried out using proper materials which are fit for the use they are intended and for the condition in which they are to be used. All materials used in connection with the works to comply with the construction products regulation (EU) no. 305/2011 and the harmonised technical specifications/standards that fall within the remit of the CEN no. 305/2011. Figured dimensions must be used in preference to scaled dimensions. Any dimensional discrepancies must be reported to the Architect immediately. This drawing remains the copyright of van Dijk Architects. It must not be used for any purpose building or otherwise without the express permission of the practice. Do not copy or redistribute these drawings or any additional information without the expressed approval of van Dijk Architects.