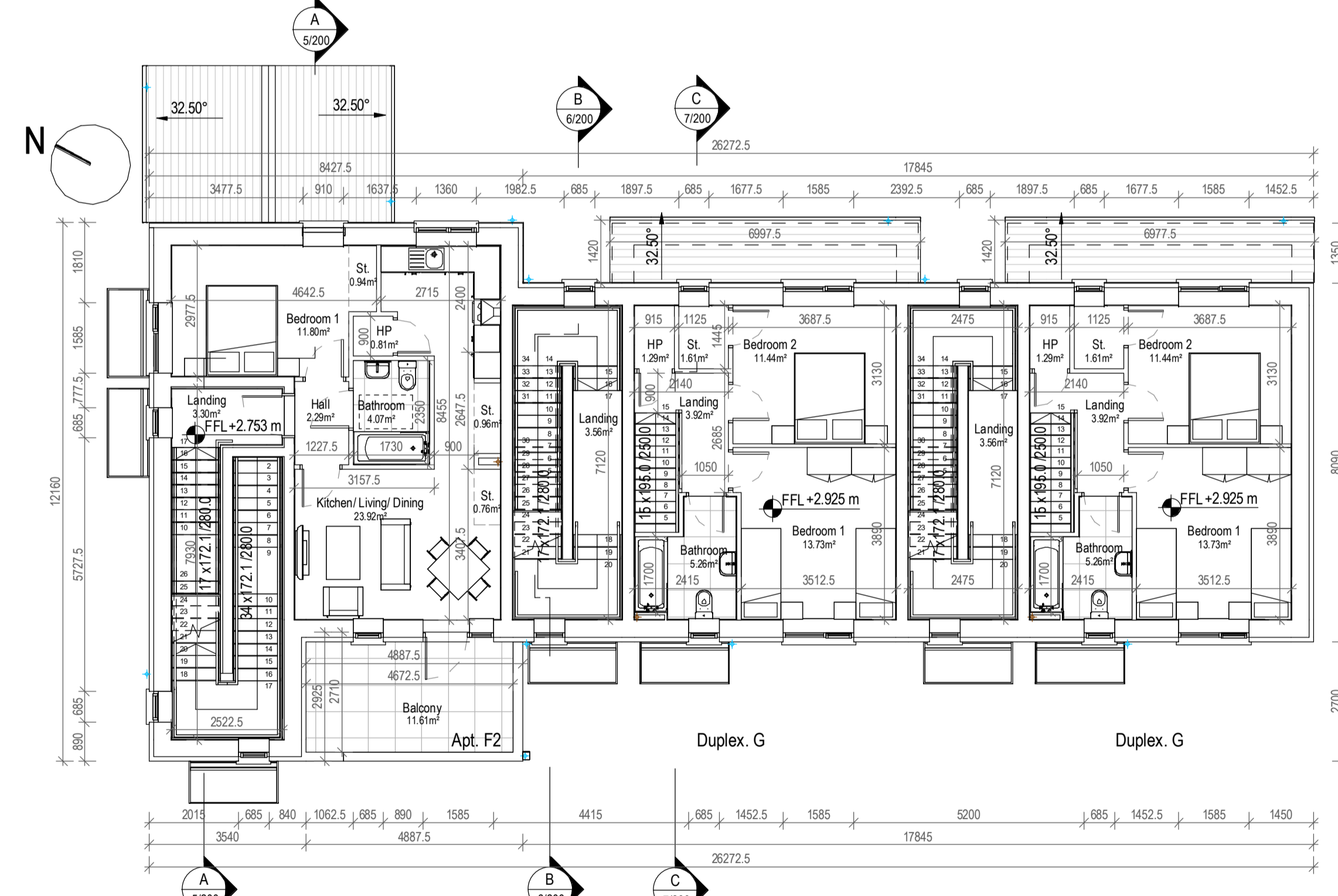
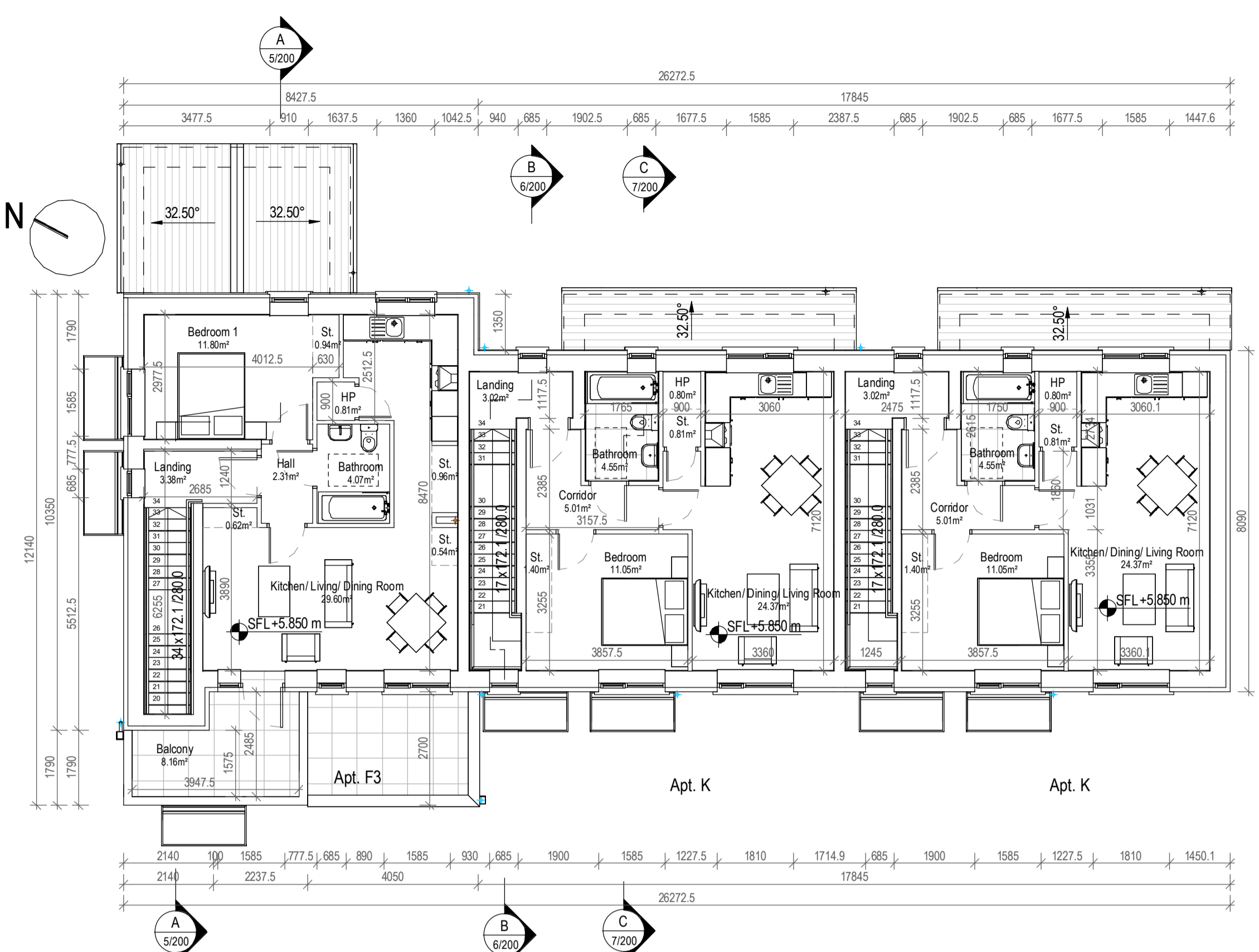


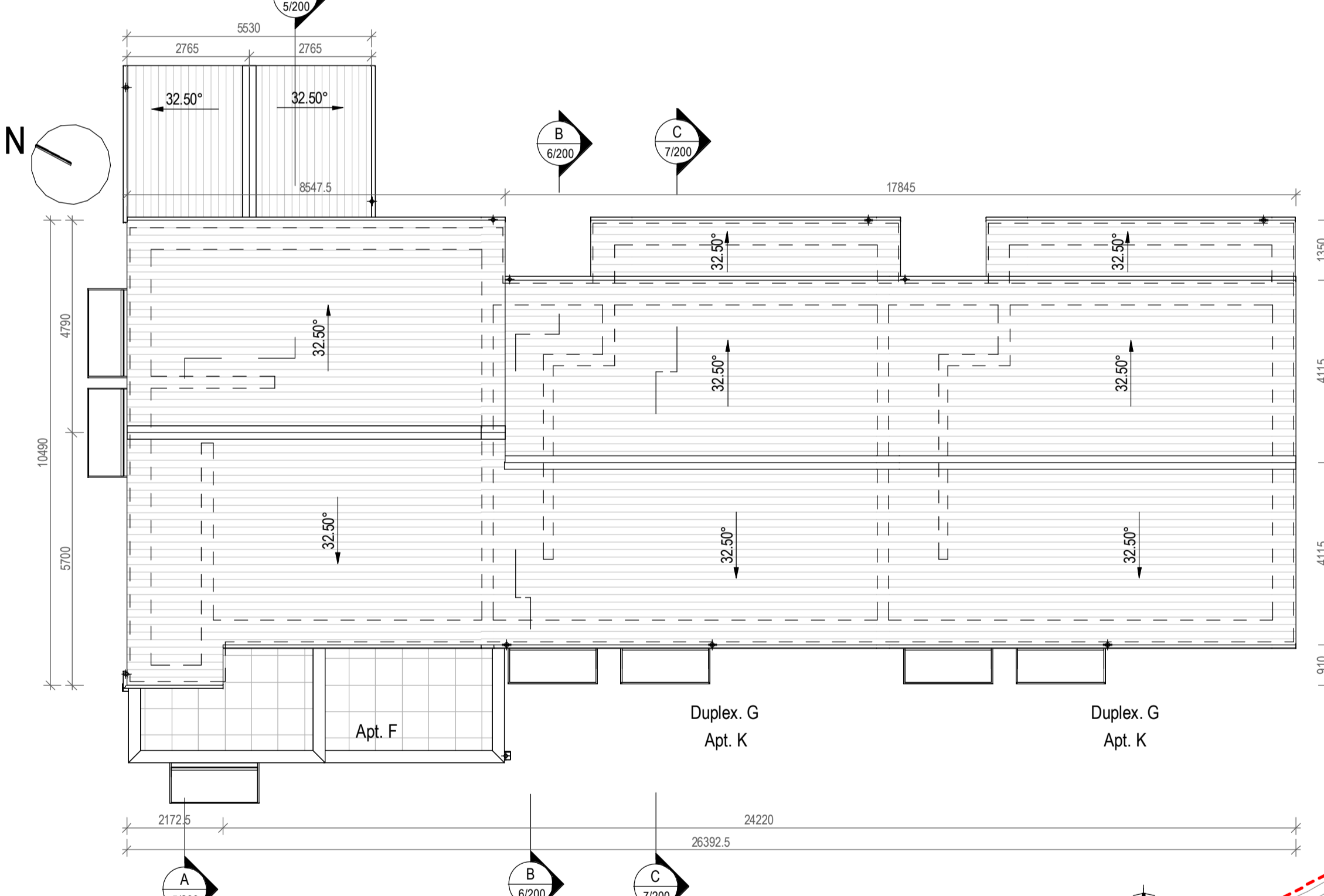
1 Ground Floor Plan  
1:100



2 First Floor Plan  
1:100



3 Second Floor Plan  
1:100



4 Roof Plan  
1:100

Apt. F1.1 UD Room Schedule	
Name	Area
Hall	10.80 m <sup>2</sup>
Wet Room	6.66 m <sup>2</sup>
HP	1.08 m <sup>2</sup>
	18.54 m <sup>2</sup>
Kitchen/ Dining/ Living Room	28.10 m <sup>2</sup>
1. Liv	28.10 m <sup>2</sup>
Bedroom 1	7.03 m <sup>2</sup>
Bedroom 2	13.07 m <sup>2</sup>
2. Bedroom	20.10 m <sup>2</sup>
St.	0.42 m <sup>2</sup>
St.	1.62 m <sup>2</sup>
St.	1.38 m <sup>2</sup>
St.	0.36 m <sup>2</sup>
St.	1.78 m <sup>2</sup>
St.	0.57 m <sup>2</sup>
3. St.	6.12 m <sup>2</sup>
	72.86 m <sup>2</sup>

Apt. F2 Room Schedule	
Name	Area
Bathroom	4.07 m <sup>2</sup>
Balcony	11.61 m <sup>2</sup>
Hall	3.30 m <sup>2</sup>
HP	0.81 m <sup>2</sup>
Landing	3.30 m <sup>2</sup>
Hall	2.29 m <sup>2</sup>
	25.37 m <sup>2</sup>
Kitchen/ Living/ Dining	23.92 m <sup>2</sup>
1. Liv	23.92 m <sup>2</sup>
Bedroom 1	11.80 m <sup>2</sup>
2. Bedroom	11.80 m <sup>2</sup>
St.	0.96 m <sup>2</sup>
St.	1.23 m <sup>2</sup>
St.	0.94 m <sup>2</sup>
St.	0.76 m <sup>2</sup>
3. St.	3.89 m <sup>2</sup>
	64.98 m <sup>2</sup>

Apt. F1 Gross Floor Area	
Level	Area
GFL	75.24 m <sup>2</sup>
Total	75.24 m <sup>2</sup>

Apt. F3 Room Schedule	
Name	Area
Balcony	8.16 m <sup>2</sup>
Bathroom	4.07 m <sup>2</sup>
Landing	3.38 m <sup>2</sup>
Hall	2.31 m <sup>2</sup>
Hall	3.67 m <sup>2</sup>
HP	0.81 m <sup>2</sup>
	22.40 m <sup>2</sup>
Kitchen/ Living/ Dining Room	29.60 m <sup>2</sup>
1. Liv	29.60 m <sup>2</sup>
Bedroom 1	11.80 m <sup>2</sup>
2. Bedroom	11.80 m <sup>2</sup>
St.	0.62 m <sup>2</sup>
St.	0.94 m <sup>2</sup>
St.	1.23 m <sup>2</sup>
St.	0.96 m <sup>2</sup>
St.	0.54 m <sup>2</sup>
3. St.	4.29 m <sup>2</sup>
	68.09 m <sup>2</sup>

Apt. F3 Gross Floor Area	
Level	Area
GFL	52.81 m <sup>2</sup>
Total	52.81 m <sup>2</sup>

Apt. F2 Gross Floor Area	
Level	Area
GFL	47.39 m <sup>2</sup>
Total	47.39 m <sup>2</sup>

Duplex G Room Schedule	
Name	Area
Bathroom	5.26 m <sup>2</sup>
Landing	3.92 m <sup>2</sup>
Hall	7.24 m <sup>2</sup>
WC	2.97 m <sup>2</sup>
HP	1.29 m <sup>2</sup>
	20.68 m <sup>2</sup>
Kitchen & Living Room	31.57 m <sup>2</sup>
1. Liv	31.57 m <sup>2</sup>
Bedroom 2	11.44 m <sup>2</sup>
Bedroom 1	13.73 m <sup>2</sup>
2 Bedroom	25.17 m <sup>2</sup>
Utility/St.	5.54 m <sup>2</sup>
St.	1.61 m <sup>2</sup>
St.	1.06 m <sup>2</sup>
3 Storage	8.21 m <sup>2</sup>
	85.62 m <sup>2</sup>

Duplex G Gross Floor Area	
Level	Area
GFL	49.20 m <sup>2</sup>
FFL	37.98 m <sup>2</sup>
Total	87.18 m <sup>2</sup>

Apt. K Room Schedule	
Name	Area
Bathroom	4.55 m <sup>2</sup>
Corridor	5.01 m <sup>2</sup>
Hall	11.77 m <sup>2</sup>
Landing	3.56 m <sup>2</sup>
Landing	3.02 m <sup>2</sup>
	27.91 m <sup>2</sup>
Kitchen/ Dining/ Living Room	24.37 m <sup>2</sup>
1. Liv	24.37 m <sup>2</sup>
Bedroom	11.05 m <sup>2</sup>
2. Bedroom	11.05 m <sup>2</sup>
HP	0.80 m <sup>2</sup>
St.	1.40 m <sup>2</sup>
St.	2.77 m <sup>2</sup>
St.	0.81 m <sup>2</sup>
3 St.	5.79 m <sup>2</sup>
	69.11 m <sup>2</sup>

Apt. K Gross Floor Area	
Level	Area
GFL	49.76 m <sup>2</sup>
FFL	37.98 m <sup>2</sup>
Total	49.76 m <sup>2</sup>

Quality Housing for Sustainable Communities space provision						
Apt. F1.1 UD	Dwelling Type	Gross Floor Area	Minimum Main Living Room Area	Aggregate Living Area	Aggregate Bedroom Area	Storage Area
Target	2 Bed 3P House	73	13	28	20	6
Proposed	2 Bed 3P House	75.24	13	28.10	20.18	6.02

PLEASE NOTE:  
Minimum unobstructed living room width 3.6m.  
Main bedroom area 13m<sup>2</sup>, Double room 11.4m<sup>2</sup> (2.8m minimum width), Single room 7.1m<sup>2</sup> (2.1m minimum width)

Quality Housing for Sustainable Communities space provision						
Apt. F2	Dwelling Type	Gross Floor Area	Minimum Main Living Room Area	Aggregate Living Area	Aggregate Bedroom Area	Storage Area
Target	1 Bed 2P House	45	11	23	11	3
Proposed	1 Bed 2P House	47.39	11	23.92	11.80	3.47

PLEASE NOTE:  
Minimum unobstructed living room width 3.6m.  
Main bedroom area 13m<sup>2</sup>, Double room 11.4m<sup>2</sup> (2.8m minimum width), Single room 7.1m<sup>2</sup> (2.1m minimum width)

Quality Housing for Sustainable Communities space provision						
Apt. F3	Dwelling Type	Gross Floor Area	Minimum Main Living Room Area	Aggregate Living Area	Aggregate Bedroom Area	Storage Area
Target	1 Bed 2P House	45	11	23	11	3
Proposed	1 Bed 2P House	52.81	11	29.43	11.80	3.74

PLEASE NOTE:  
Minimum unobstructed living room width 3.6m.  
Main bedroom area 13m<sup>2</sup>, Double room 11.4m<sup>2</sup> (2.8m minimum width), Single room 7.1m<sup>2</sup> (2.1m minimum width)

Quality Housing for Sustainable Communities space provision						
Apt. K	Dwelling Type	Gross Floor Area	Minimum Main Living Room Area	Aggregate Living Area	Aggregate Bedroom Area	Storage Area
Target	1 Bed 2P House	45	11	23	11	3
Proposed	1 Bed 2P House	49.75	11	24.52	11.05	3.01

PLEASE NOTE:  
Minimum unobstructed living room width 3.6m.  
Main bedroom area 13m<sup>2</sup>, Double room 11.4m<sup>2</sup> (2.8m minimum width), Single room 7.1m<sup>2</sup> (2.1m minimum width)

Quality Housing for Sustainable Communities space provision						
Duplex G	Dwelling Type	Gross Floor Area	Minimum Main Living Room Area	Aggregate Living Area	Aggregate Bedroom Area	Storage Area
Target	2 Bed 4P House	85	13	30	25	6
Proposed	2 Bed 4P House	88.72	13	31.57	25.17	8.44

PLEASE NOTE:  
Minimum unobstructed living room width 3.6m.  
Main bedroom area 13m<sup>2</sup>, Double room 11.4m<sup>2</sup> (2.8m minimum width), Single room 7.1m<sup>2</sup> (2.1m minimum width)



Key Plan  
1:2500

Rev.	By	Date	Description
A	JC	16/08/2022	First Issue For Planning



Mill House, Mill Street, Dundalk, Co. Louth  
+353 (0) 42 935 4466  
info@vandijkarchitects.com  
www.vandijkarchitects.com

Drawing Title: **Block 7 (FGKKG) Floor Plans**

Scale	Drawing Number	Job	Client
1:100	2043-PA-BL7-100	Greenfields Maynooth	Kildare Co. Co.
A	A1	2043-PA-BL7-100-200	MS
MS	MS	MS	MS
			September 2021

All works to be carried out using proper materials which are fit for the use they are intended and for the condition in which they are to be used. All materials used in connection with the works to comply with the construction products regulation (EU) no. 305/2011 and the harmonised technical specifications/standards that fall within the remit of the CEN or CENELEC.  
Figured dimensions must be used in preference to scaled dimensions. Any dimensional discrepancies must be reported to the Architect immediately. This drawing remains the copyright of van Dijk Architects. It must not be used for any purpose building or otherwise without the express permission of the practice. Do not copy or redistribute these drawings or any additional information without the express approval of van Dijk Architects.