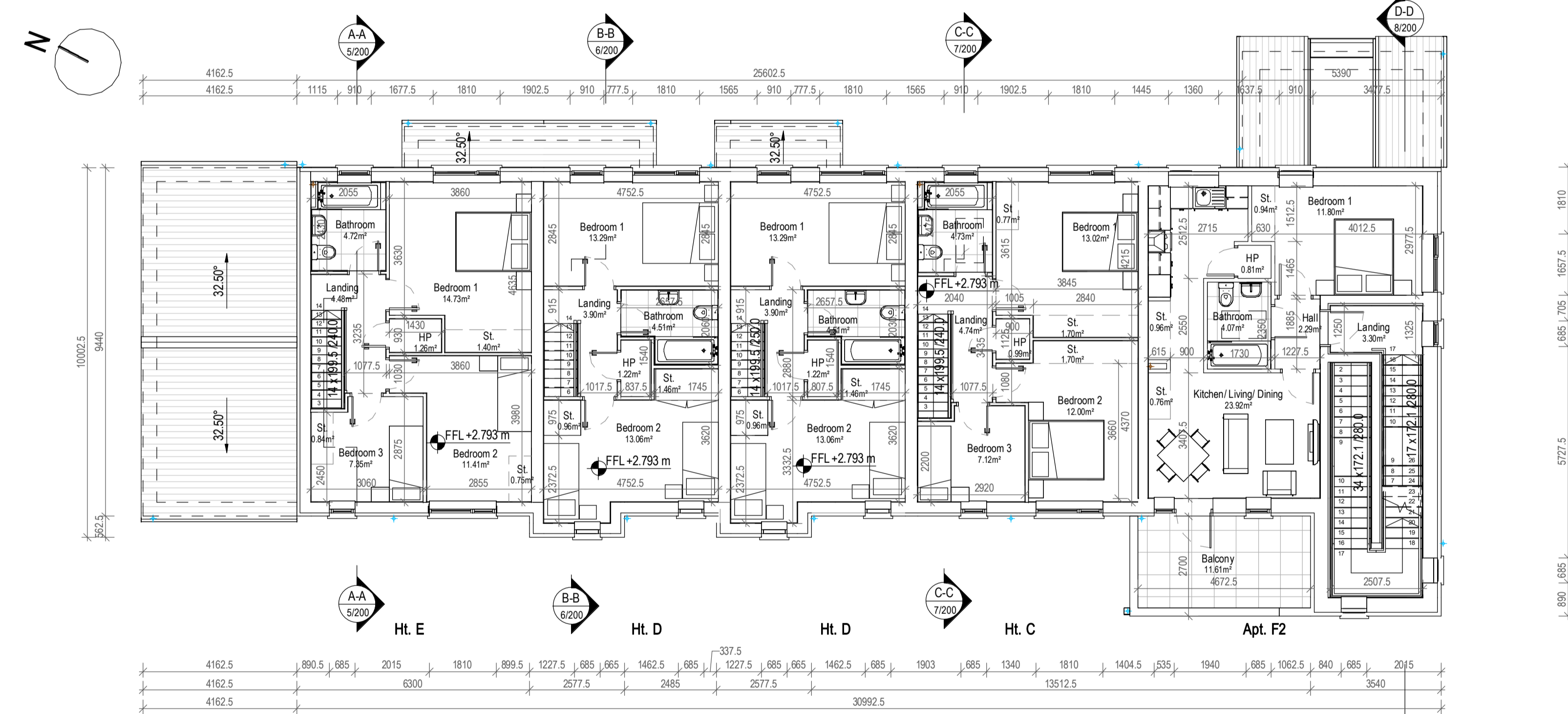


1 Ground Floor Plan
1:100



2 First Floor Plan
1:100

Quality Housing for Sustainable Communities space provision						
Ht.E	Dwelling Type	Gross Floor Area	Minimum Main Living Room Area	Aggregate Living Area	Aggregate Bedroom Area	Storage Area
Target	4 Bed 7P House	110	15	40	43	10
Proposed	4 Bed 6P House	130.6	15	43.18	45.63	11.37

PLEASE NOTE:
Minimum unobstructed living room width 3.8m.
Main bedroom area 13m², Double room 11.4m² (2.8m minimum width), Single room 7.1m² (2.1m minimum width)

Quality Housing for Sustainable Communities space provision						
Ht.D	Dwelling Type	Gross Floor Area	Minimum Main Living Room Area	Aggregate Living Area	Aggregate Bedroom Area	Storage Area
Target	2 Bed 3P House	85	13	28	20	6
Proposed	2 Bed 3P House	85.04	13	31.44	26.35	6.18

PLEASE NOTE:
Minimum unobstructed living room width 3.8m.
Main bedroom area 13m², Double room 11.4m² (2.8m minimum width), Single room 7.1m² (2.1m minimum width)

Quality Housing for Sustainable Communities space provision						
Ht.C	Dwelling Type	Gross Floor Area	Minimum Main Living Room Area	Aggregate Living Area	Aggregate Bedroom Area	Storage Area
Target	3 Bed 5P House	100	13	34	32	9
Proposed	3 Bed 5P House	100.6	13	34.01	32.14	10.02

PLEASE NOTE:
Minimum unobstructed living room width 3.8m.
Main bedroom area 13m², Double room 11.4m² (2.8m minimum width), Single room 7.1m² (2.1m minimum width)

Quality Housing for Sustainable Communities space provision						
Apt. F1 UD	Dwelling Type	Gross Floor Area	Minimum Main Living Room Area	Aggregate Living Area	Aggregate Bedroom Area	Storage Area
Target	2 Bed 3P House	73	13	28	20	6
Proposed	2 Bed 3P House	75.24	13	28.10	20.18	6.10

PLEASE NOTE:
Minimum unobstructed living room width 3.8m.
Main bedroom area 13m², Double room 11.4m² (2.8m minimum width), Single room 7.1m² (2.1m minimum width)

Quality Housing for Sustainable Communities space provision						
Apt. F2	Dwelling Type	Gross Floor Area	Minimum Main Living Room Area	Aggregate Living Area	Aggregate Bedroom Area	Storage Area
Target	1 Bed 2P House	45	11	23	11	3
Proposed	1 Bed 2P House	47.39	11	23.92	11.80	3.47

PLEASE NOTE:
Minimum unobstructed living room width 3.8m.
Main bedroom area 13m², Double room 11.4m² (2.8m minimum width), Single room 7.1m² (2.1m minimum width)

Quality Housing for Sustainable Communities space provision						
Apt. F3	Dwelling Type	Gross Floor Area	Minimum Main Living Room Area	Aggregate Living Area	Aggregate Bedroom Area	Storage Area
Target	1 Bed 2P House	45	11	23	11	3
Proposed	1 Bed 2P House	52.81	11	29.43	11.80	3.77

PLEASE NOTE:
Minimum unobstructed living room width 3.8m.
Main bedroom area 13m², Double room 11.4m² (2.8m minimum width), Single room 7.1m² (2.1m minimum width)

Ht.E Room Schedule	
Name	Area
Landing	4.48 m ²
Bathroom	4.72 m ²
HP	1.26 m ²
Hall	13.86 m ²
WC	2.25 m ²
Wet Room	6.87 m ²
33.45 m ²	
Living Room	15.62 m ²
Kitchen/ Dining	27.56 m ²
43.18 m ²	
Bedroom 2	11.41 m ²
Bedroom 1	14.73 m ²
Bedroom 3	7.35 m ²
Bedroom	12.14 m ²
45.64 m ²	
St.	0.75 m ²
St.	1.40 m ²
St.	1.78 m ²
St.	1.50 m ²
St.	2.52 m ²
St.	0.84 m ²
St.	1.32 m ²
10.10 m ²	

Ht.D Room Schedule	
Name	Area
St.	0.56 m ²
St.	0.60 m ²
1.16 m ²	
Landing	3.90 m ²
WC	1.60 m ²
Hall	1.38 m ²
Hall	3.12 m ²
HP	1.22 m ²
Bathroom	4.51 m ²
15.72 m ²	
Kitchen/Dining	14.35 m ²
Living Room	17.09 m ²
31.44 m ²	
Bedroom 2	13.06 m ²
Bedroom 1	13.29 m ²
26.35 m ²	
St.	1.42 m ²
St.	1.48 m ²
St.	1.46 m ²
St.	0.96 m ²
3. St.	5.32 m ²

Ht.C Room Schedule	
Name	Area
Landing	4.74 m ²
Bathroom	4.73 m ²
HP	0.99 m ²
Hall	7.53 m ²
WC	2.14 m ²
20.13 m ²	
Living Room	15.39 m ²
Kitchen/ Dining	18.62 m ²
34.01 m ²	
Bedroom 2	12.00 m ²
Bedroom 1	13.02 m ²
Bedroom 3	7.12 m ²
32.14 m ²	
St.	1.70 m ²
St.	1.70 m ²
St.	2.18 m ²
St.	2.68 m ²
St.	0.77 m ²
9.02 m ²	

Ht.E Gross Floor Area	
Level	Area
FFL	49.21 m ²
GFL	81.37 m ²
Total	130.58 m ²

Ht.D Gross Floor Area	
Level	Area
FFL	40.22 m ²
GFL	44.82 m ²
Total	85.04 m ²

Ht.C Gross Floor Area	
Level	Area
FFL	49.21 m ²
GFL	51.42 m ²
Total	100.63 m ²

Apt.F1 UD Room Schedule	
Name	Area
Hall	10.80 m ²
Wet Room	6.66 m ²
HP	1.08 m ²
18.54 m ²	
Kitchen/ Dining/ Living Room	28.10 m ²
28.10 m ²	
1. Liv	28.10 m ²
Bedroom 1	7.03 m ²
Bedroom 2	13.07 m ²
20.10 m ²	
St.	0.42 m ²
St.	1.62 m ²
St.	1.38 m ²
St.	0.36 m ²
St.	1.78 m ²
St.	0.57 m ²
3. St.	6.12 m ²

Apt.F2 Room Schedule	
Name	Area
Bathroom	4.07 m ²
Balcony	11.61 m ²
Hall	3.30 m ²
HP	0.81 m ²
Landing	3.30 m ²
Hall	2.29 m ²
25.37 m ²	
Kitchen/ Living/ Dining	23.92 m ²
23.92 m ²	
1. Liv	23.92 m ²
Bedroom 1	11.80 m ²
11.80 m ²	
2. Bedroom	11.80 m ²
St.	0.96 m ²
St.	1.23 m ²
St.	0.94 m ²
St.	0.96 m ²
St.	0.54 m ²
3. St.	3.89 m ²

Apt.F3 Room Schedule	
Name	Area
Balcony	8.16 m ²
Bathroom	4.07 m ²
Landing	3.38 m ²
Hall	2.31 m ²
Hall	3.67 m ²
HP	0.81 m ²
22.40 m ²	
Kitchen/ Living/ Dining Room	29.60 m ²
29.60 m ²	
1. Liv	29.60 m ²
Bedroom 1	11.80 m ²
11.80 m ²	
2. Bedroom	11.80 m ²
St.	0.62 m ²
St.	0.94 m ²
St.	1.23 m ²
St.	0.96 m ²
St.	0.54 m ²
3. St.	4.29 m ²

Apt. F1 UD Gross Floor...	
Level	Area
GFL	75.24 m ²
Total	75.24 m ²

Apt. F2 Gross Floor Area	
Level	Area
FFL	47.39 m ²
Total	47.39 m ²

Apt. F3 Gross Floor Area	
Level	Area
SFL	52.81 m ²
Total	52.81 m ²



A	JC	16/08/2022	First Issue For Planning
Rev.	By	Date	Description



Mill House, Mill Street., Dundalk, Co. Louth info@vandijkarchitects.com
+353 (0) 42 935 4466 www.vandijkarchitects.com

Drawing Title	
Block 9 (EDDCF1)	Ground / First Floor Plans

Scale	Drawing Number	Job	Client
1:100	2043-PA-BL9-100	Greenfields Maynooth	Kildare Co. Co.
AS	2043-PA-BL9-100-200		
Author	Checked	Date	
M	KH	September 2021	

All works to be carried out using proper materials which are fit for the use they are intended and for the condition in which they are to be used. All materials used in connection with the works to comply with the construction products regulation (EU) no. 305/2011 and the harmonised technical specifications/standards that fall within the remit of the CEN no. 305/2011. Figured dimensions must be used in preference to scaled dimensions. Any dimensional discrepancies must be reported to the Architect immediately. This drawing remains the copyright of van Dijk Architects. It must not be used for any purpose building or otherwise without the express permission of the practice. Do not copy or redistribute these drawings or any additional information without the expressed approval of van Dijk Architects.