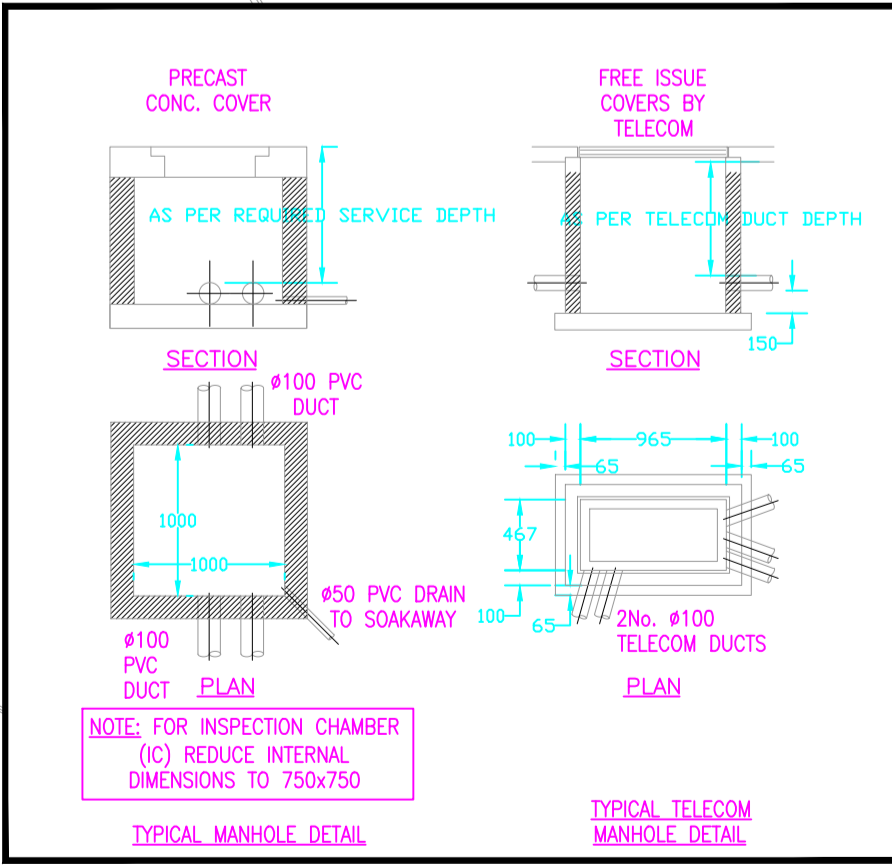
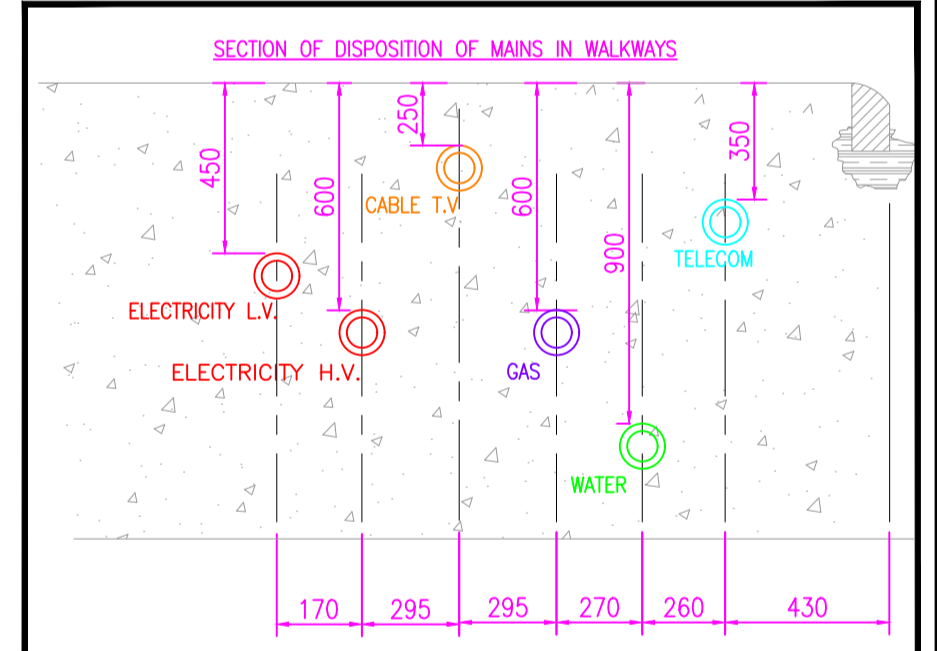
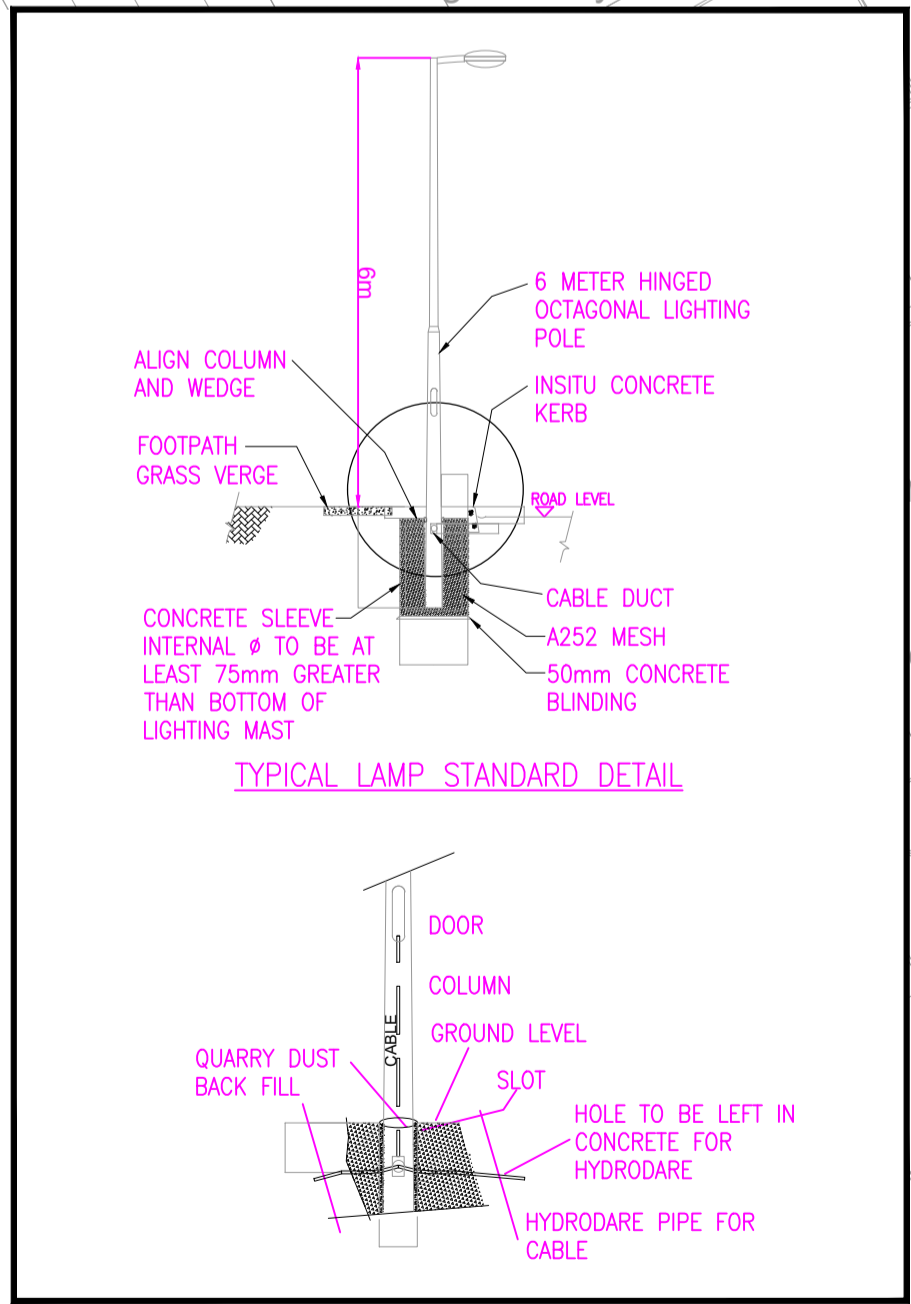
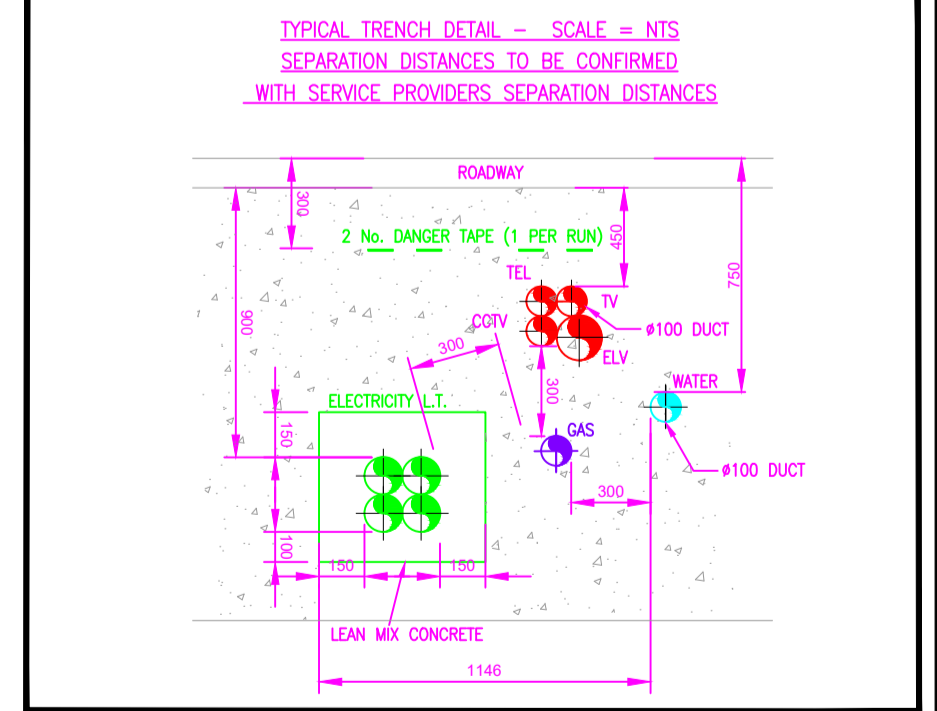


**LEGEND**

- SL — EXTERNAL LIGHTING DUCT #100mm (RED)
- SL — EXISTING EXTERNAL LIGHTING DUCT
- P LED LANTERN, 22W, 3400lm, 4000K, IP66, IK09, DW50 DISTRIBUTION ON 6m POLE
- E EXISTING LUMINAIRE
- ⊠ MANHOLE FOR DRAWING WIRES, ACCESS AND MAINTENANCE.
- ESB MINIPILLAR "n"
- PL MICROPILLAR "n"



- NOTES:**
- Ducting shall comply with latest version of BS EN 50086 and shall be single wall, coloured red and manufactured from high-density polyethylene. The nominal external diameter of the duct shall be 107mm with a minimum wall thickness of 5mm.
  - Each length of duct shall be stamped with the words "Public Lighting" or "Street Lighting", in 18mm black lettering repeated at 1-metre intervals.
  - Ducts shall be laid with the legend facing upwards, in a straight line, close to the line of the column locations and shall contain a continuous draw wire of 8 kN strength.
  - Sand should be used to backfill to 150mm above the top of the ducting.
  - A clearance of at least 100mm shall be allowed to the trench wall.
  - An identifying tape must be placed on top of the sand.
  - A minimum depth of 450mm cover is required in urban footways, grass margins, pedestrian ways, laneways and vehicular accesses; and a minimum depth of 750mm is required at road crossings or under roadways.
  - All sleeves to be in accordance with Section 11 and Appendix E of the "Construction Standards for Road and Street Works in Dublin City Council"



**Referenced drawings**

Dwg No.	Dwg Title

**Issue register**

Rev.	Date	Description	Dwn.	Chkd.	Appvd.
P1	19/10/21	PLANNING	HP	BC	AW
P2	15/02/22	PART 8	HP	BC	BC
P3	07/04/22	PART 8	HP	BC	BC
P4	12/05/22	PART 8	HP	BC	BC
P5	01/11/22	PART 8	HP	BC	BC
P6	03/11/22	PART 8	HP	BC	BC

- NOTES:**
- THIS DRAWING TO BE READ IN CONJUNCTION WITH ALL RELEVANT ARCHITECTS, C&S ENGINEERS DRAWINGS & SPECIFICATIONS.
  - ALL WORKS TO BE CARRIED OUT IN ACCORDANCE WITH THE RELEVANT BUILDING REGULATIONS.
  - DO NOT SCALE - WORK TO FIGURE DIMENSIONS ONLY.

**IHEEM**  
Qualitas Veritas  
ISO 9001-2015

**ENGINEERS IRELAND**  
cpd ACCREDITED COMPANY

**PUBLIC LIGHTING SITE SERVICES LAYOUT**

Date: 18/10/21  
Scale: 1:400@A1 (1:800@A3)

Drawn By: H.P.  
Checked By: B.C.  
Approved By: A.W.

**KILDARE COUNTY COUNCIL**

Job Description: GREENFIELDS MAYNOOTH, Co. KILDARE

Project No: 21ME001  
Drawing Ref: ME-1000(C)  
Rev: P6

**Hayes Higgins Partnership**  
Gas House Lane, Kilkenny.

Site: Gas House Lane, Kilkenny  
Tel: 051 861231  
Fax: 051 861232  
Email: info@hayeshiggins.com

© HAYES HIGGINS PARTNERSHIP

COPY FILE: 21ME001-ME-1000.dwg