



### Detail Landscape Plan - Play Area

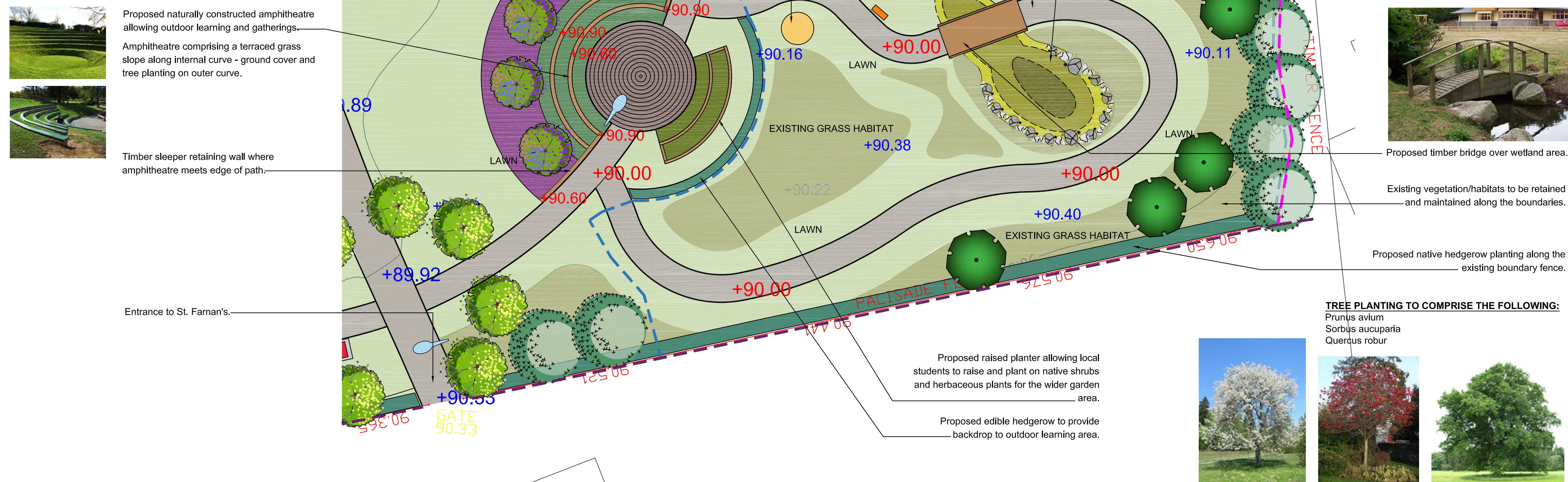
Scale 1:200

#### WILDLIFE GARDEN ECOLOGICAL ZONES

Four distinct Ecological zones are to be retained and/or created, each one supporting a slightly different community of organisms. The existing local flora plays a major role in ecological function of each community. A well balanced community functioning in harmony with other communities benefits the larger whole. It is important therefore to provide and preserve conditions that foster native plant populations. An ecological community using native species will be more inclined to remain balanced and healthy.

The criteria used to determine the different zones include topography, slope, aspect, soils and drainage.

1. **EDGE**  
Characterised by native shrub vegetation at the edge of existing lawn areas. Species include Alder, Hawthorn, Holly, Blackthorn, Elder and Ivy.
2. **MEADOW**  
Characterised by larger areas of existing grass areas which are to be retained in their current condition and will be located generally to the edge of proposed lawn areas. These areas are maintained on a twice yearly basis.
3. **RIPARIAN**  
The wetland area is to be constructed and planted with vegetation capable of withstanding fluctuating water levels.
4. **WOODLAND**  
Existing dense and mature planting to the site boundaries are to be retained. In order to create a more sustainable woodland area new tree planting will be required. Planting comprising dominant (Oak) and sub-dominant species (Mountain Ash and Bird Cherry) will create a well balanced native woodland.



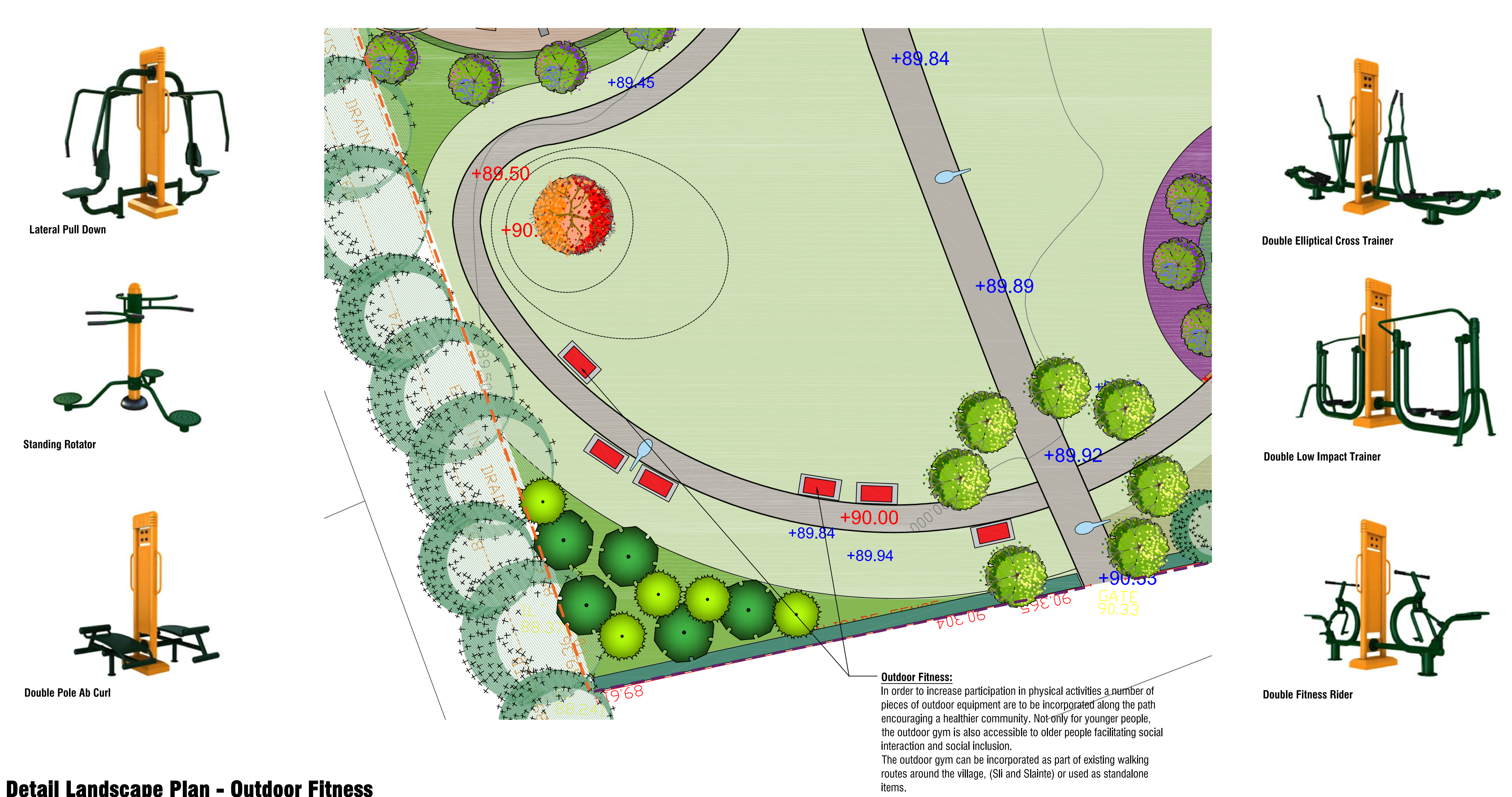
### Detail Landscape Plan - Biodiversity Garden/Educational Space

Scale 1:200



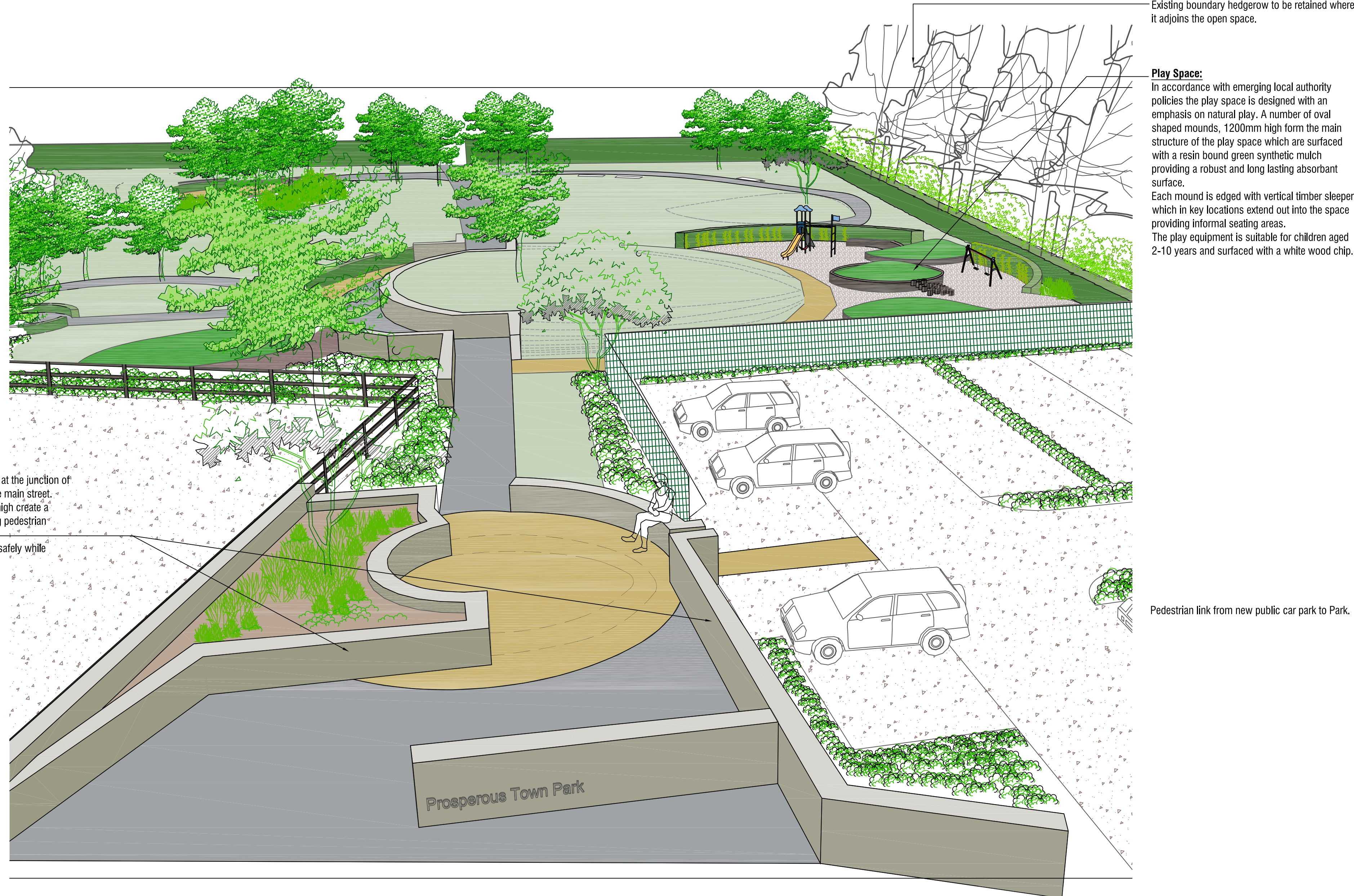
### Detail Landscape Plan - Outdoor Fitness

Scale 1:200



**Park Entrance:**  
The main pedestrian entrance is located at the junction of the existing path through the site and the main street.  
A series of walls, 600mm and 800mm high create a threshold space slowing down emerging pedestrian traffic onto main street.  
The space allows students to converge safely while waiting on buses.

### 3D View - Main Entrance



Revision		Date	By	Check	Project
A	Minor revisions for Part IV Plotting	06.12.2016	UT	UT	UT