

# **TRAFFIC MANAGEMENT PLAN FOR CELBRIDGE**



## **FINAL REPORT**

**APRIL 2009**

**KILDARE COUNTY COUNCIL**

**TRAFFIC MANAGEMENT PLAN FOR CELBRIDGE**

**FINAL REPORT**

**APRIL 2009**

**PREPARED BY:**

**Transportation Planning (International) Ltd**

TPI House  
Civic Offices Extension  
Tallaght  
Dublin 24  
Ireland

Tel No: 00 3531 459 6533

Fax No. 00 3531 459 6570

E-mail: [info@tpi-world.com](mailto:info@tpi-world.com)

*This Report is for the sole use of Kildare County Council for whom the Report has been undertaken. It may not be reproduced in whole or in part or relied upon by any third party for any use whatsoever without the express written authority of Transportation Planning (International) Limited. Transportation Planning (International) Limited accepts no duty or responsibility (including in negligence) to any party other than to Kildare County Council and disclaims all liability of any nature whatsoever to any such party in respect of this Report.*

**Project Title:** Traffic Management Plan for Celbridge

**Project No:** J22043

**Document Ref:** 22043 / Reports / Traffic Management Plan for Celbridge

**Document Status:** Final

**Document Approval:**

---

Project Director Alan Bailes

---

Project Manager Wayne Garside

---

**Issue Date and History:** January 2008 – Draft  
March 2008 – Draft Final  
April 2009 - Final

**Distribution:**

External: Kildare County Council

Internal: File

**TRAFFIC MANAGEMENT PLAN FOR CELBRIDGE****Contents**

- 1.0 Introduction
- 2.0 Policy and Development Framework
- 3.0 Data Collection
- 4.0 Celbridge Safer Routes to School
- 5.0 Consultation
- 6.0 Short Term Recommendations
- 7.0 Appraisal of Long Term Infrastructure Proposals
- 8.0 Longer Term Recommendations
- 9.0 Implementation and Conclusions

**Appendices**

- Appendix 1 Celbridge Stakeholder Workshops – Invited Stakeholders
- Appendix 2 Celbridge Safer Routes to Schools Questionnaire
- Appendix 3 Traffic Modelling

**Figures**

- Figure 1 Location Plan
- Figure 2 Population Structure, Celbridge, Census 2006
- Figure 3 Celbridge Development Plan 2002, Zoning Plan
- Figure 4 Automatic Traffic Count Locations
- Figure 5 Manual Classified Turning Count Locations
- Figure 6 Main Street Parking, Accumulation, Celbridge
- Figure 7 Journey Time Routes, Celbridge
- Figure 8 Vehicle Registration Matching Count Locations and Flows
- Figure 9 Location of respondents to Questionnaire, Scoil Na Mainistreach, Celbridge
- Figure 10 Pupils travel distances to Scoil Na Mainistreach, Celbridge
- Figure 11 Pupils main mode of travel to and from Scoil Na Mainistreach, Celbridge
- Figure 12 Consultation Newsletter – Issue 1 Celbridge
- Figure 13 Minor improvements and Maintenance Recommendations: Location Plan, Celbridge
- Figure 14 Short Term Accessibility Recommendations: Location Plan, Celbridge
- Figure 15 Other Short Term Recommendations, Celbridge
- Figure 16 Proposed junction improvement: Castletown Gates, Celbridge
- Figure 17 Proposed junction improvements, adjacent to Rover Liffey Bridge, Celbridge
- Figure 18 Catchment area for existing bus routes (Jan 2008)
- Figure 19 Modelled Infrastructure Options, Celbridge
- Figure 20 Sequencing of Highway Infrastructure improvements

## **Plates**

Plate 1	Shackleton Road Cycle and Pedestrian Access, Scoil Na Mainistreach
Plate 2	School Crossing Patrol, Scoil Na Mainistreach, Celbridge
Plate 3	Cycle Parking, Scoil Na Mainistreach, Celbridge
Plate 4	Parking in the bus stop, English Row, Celbridge
Plate 5	Limited visibility to the left at the stopline at Castletown Gates, Celbridge
Plate 6	Access across the footway on Main Street to the Celbridge Clinic Car Park
Plate 7	Signing clutter on the south side of the bridge, Celbridge
Plate 8	Over-running at the Clane Road / Shackleton Road junction, Celbridge
Plate 9	50mm upstand at new tactile crossing point, Scoil Na Mainistreach
Plate 10	Signing on Oldtown Road near Scoil Na Mainistreach, Celbridge

## **Tables**

Table 1	24 Hour Flow – ATC Summary, Celbridge
Table 2	Queue Length Survey Summary, Celbridge
Table 3	PM Peak Delays, journey time survey route Celbridge Blue 2
Table 4	Reasons for not walking and cycling to Scoil Na Mainistreach, Celbridge
Table 5	Minor Improvements and Maintenance Recommendations, Celbridge
Table 6	Missing sections of footway, Celbridge
Table 7	Other accessibility hazards, Celbridge
Table 8	Traffic Model Outputs for Assessing Different Appraisal Criteria
Table 9	Summary Statistics AM Peak 2017
Table 10	Summary Statistics PM Peak 2017
Table 11	Summary of Congested Junctions at 2017
Table 12	Ranked Global Scheme Option Comparisons 2017
Table 13	Summary of Traffic Management Plan Recommendations, Celbridge

## 1.0 INTRODUCTION

### Appointment

- 1.1 Transportation Planning (International) Ltd (TPI) was appointed by Kildare County Council to produce a Traffic Management Plan for Celbridge, aimed at securing long-lasting improvements for those living in the town whilst ensuring that journeys to and from planned and future developments can be accommodated in a sustainable manner.

### Celbridge

- 1.2 Celbridge is located on the River Liffey, and to the south of the M4 Dublin-Galway/Sligo route, some 22km from Dublin (Figure 1). Maynooth lies 7km to the north and Naas 20km to the south. Celbridge is classed as being within the Dublin Metropolitan Area, and within the area covered by the Dublin Transportation Initiative. It is linked to Dublin by regular rail services from the station at Hazelhatch located some 2.3km to the south east of the town centre.
- 1.3 The Celbridge Development Plan 2002, states that '*Celbridge retains much of the character of an estate town, with the Main Street still the focus of the town and Castletown gates, the mill complex and bridge over the Liffey remaining important visual features. However the demand for services and sustained population growth has put pressure on the fabric of the streetscape as shops and offices seek space in many of the previously residential properties in the town centre and heavy traffic takes its toll on the roads and general environment*'.

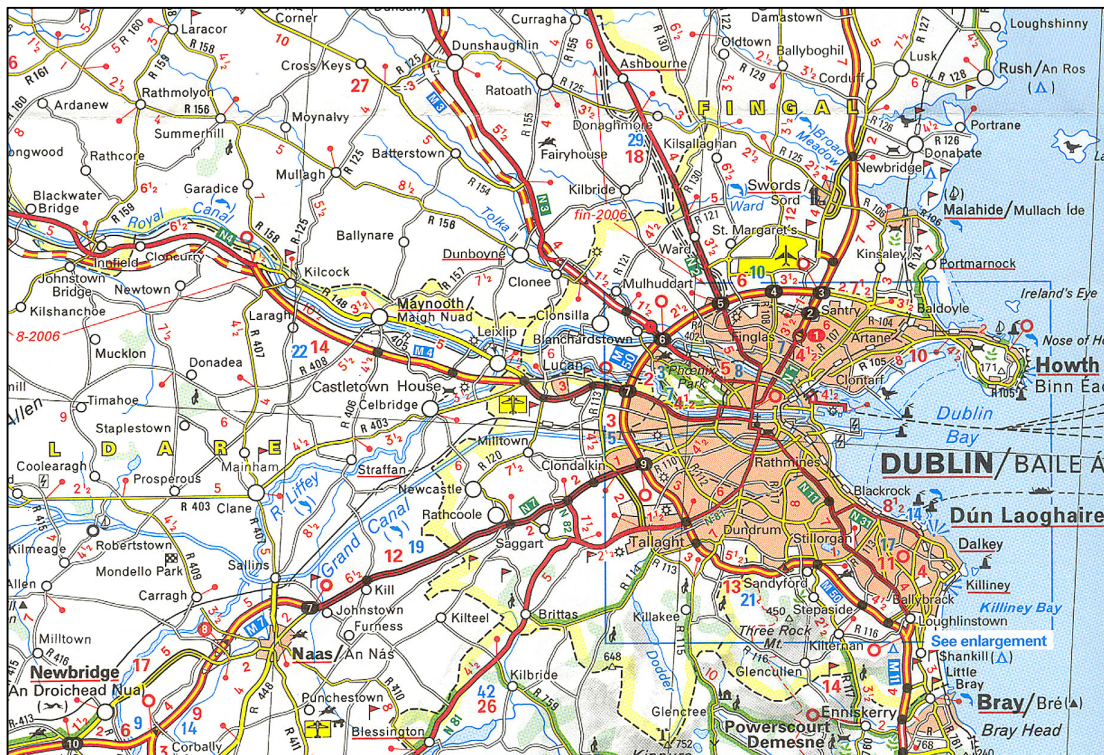
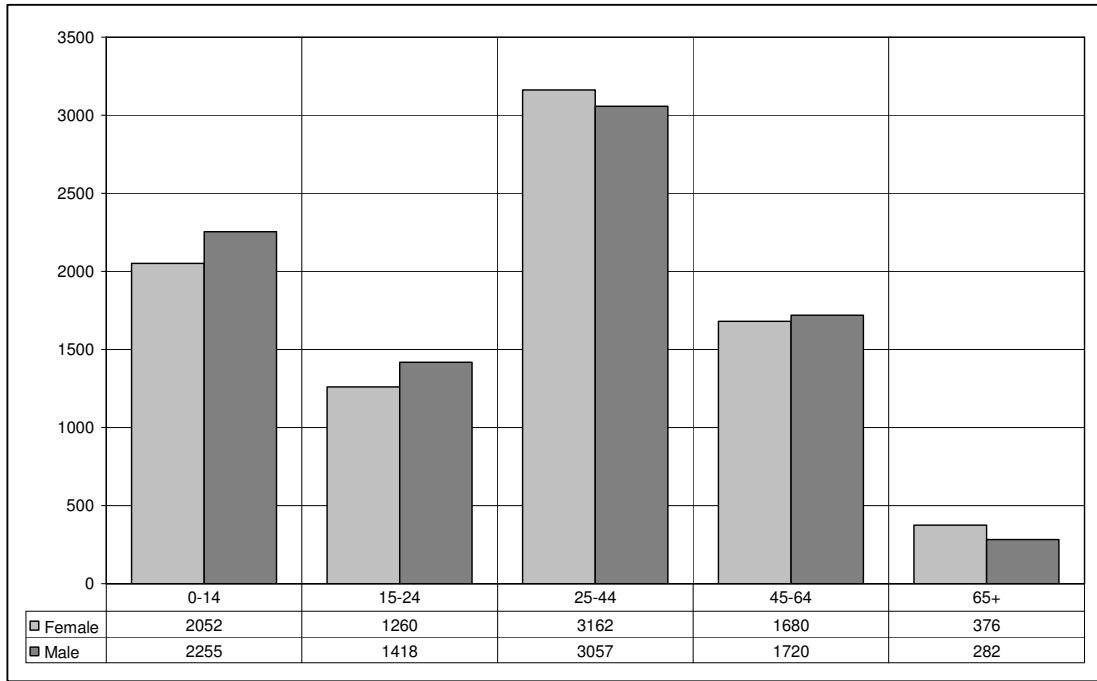


Figure 1: Location Plan

## Demographics

- 1.4 The population of Celbridge has grown rapidly over recent decades, the 1971 Census recording the population of Celbridge as 1579 and initial data from the Census 2006 recording the population of Celbridge as 17262. The current population structure of the town is shown in Figure 2.



**Figure 2: Population Structure, Celbridge, Census 2006**

## Key Traffic Generators

- 1.5 There are a number of significant traffic generators within Celbridge, including:
- North Kildare Educate Together School (National), on Clane Road;
  - Scoil Mochua, Aghards N.S. (National) off the Maynooth Road;
  - Scoil Padraig Naisiunta (National) off Primrose Hill;
  - Glebe Junior Montessori School, Barnhall Rugby Grounds;
  - Scoil Brid (National) Main Street, Celbridge;
  - Scoil Na Mainistreach (National), Oldtown Road;
  - St Raphaels Special School (Special), Clane Road;
  - Salesian College (Secondary), off Maynooth Road;
  - St Wolstan's Community School (Secondary) Clane Road;
  - The Mill Centre and Community Centre, Main St;
  - various business on Main Street;
  - car parks, including those behind: the Abbey Lodge Pub; Mucky Duck Pub; Celbridge Clinic; and, the public car park adjacent to Celbridge Abbey;
  - major supermarkets including Aldi and Tesco;
  - Hazelhatch Station and associated car park at station; and
  - a large number of residential estates, including: Castletown; St Patrick's Park; Beatty Park; Crodaun; Castle Village; Willowbrook; Thornhill; Ballygoran; Abbey Farm; Celbridge Abbey; Killadoon Park; Grattan Court; St Raphael's; Ballymakealy; The Grove; Simmonstown Park; Chelmsford and Temple Manor.



## The Celbridge Traffic Management Plan

### 1.6 This Outline Traffic Management Plan:

- highlights the key policy framework within which the study is based;
- summarises available traffic related data and identified problems, to provide robust foundation for the development of scheme options;
- summarises the work undertaken with Scoil Na Mainistreach on developing Safer Routes to Schools;
- details the consultation exercises;
- outlines the approach to traffic modelling using Saturn and Vissim traffic models;
- details proposals that will bring real benefits to Celbridge in the immediate short term;
- summarises the analysis of longer term strategic options using the traffic models; and,
- makes recommendations for longer term proposals.

### 1.7 A summary of the proposals, with outline implementation costs, is also provided within the report.

### ***Development Issues***

### 1.8 *During the course of the study details of the proposal for the development of the 'Donaghcumper' site became available and as a result details of the proposed development have been incorporated within the analysis and taken into account in the development of the traffic plan for Celbridge. The development is seen as an enhancement to the town centre and will form an integral part of the town bringing a much needed mixed development with associated highway infrastructure and transport provision. As a result, it is **recommended** that as the development proceeds, that a review of the traffic data and recommendations are undertaken. Whilst the generic development parameters have been included in the analysis, the traffic management plan cannot be treated in isolation of the planning application, it is important therefore that Kildare County Council revisits the findings of the report and assess any differences from what was included in original 'Donaghcumper' proposals.*