

General Notes:

- All services to be kept clear of crossing where possible.
- All guardrails to be painted yellow, top and sides.
- Refer to Dished Kerb detail.
- Refer to Traffic Signal details.

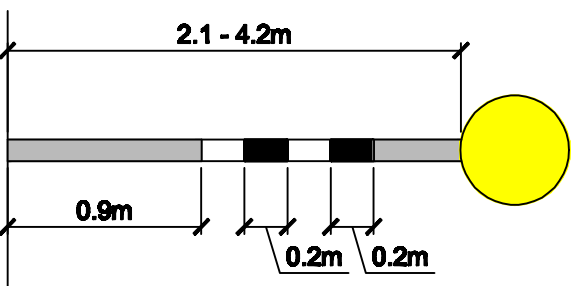
Zebra Crossing

Pedestrians have right of way as they step out on to the crossing, they cause little delay to pedestrians and are generally used in the following circumstances:

- Where traffic speeds are low.
- Where traffic volumes are moderate
- As part of traffic calming schemes

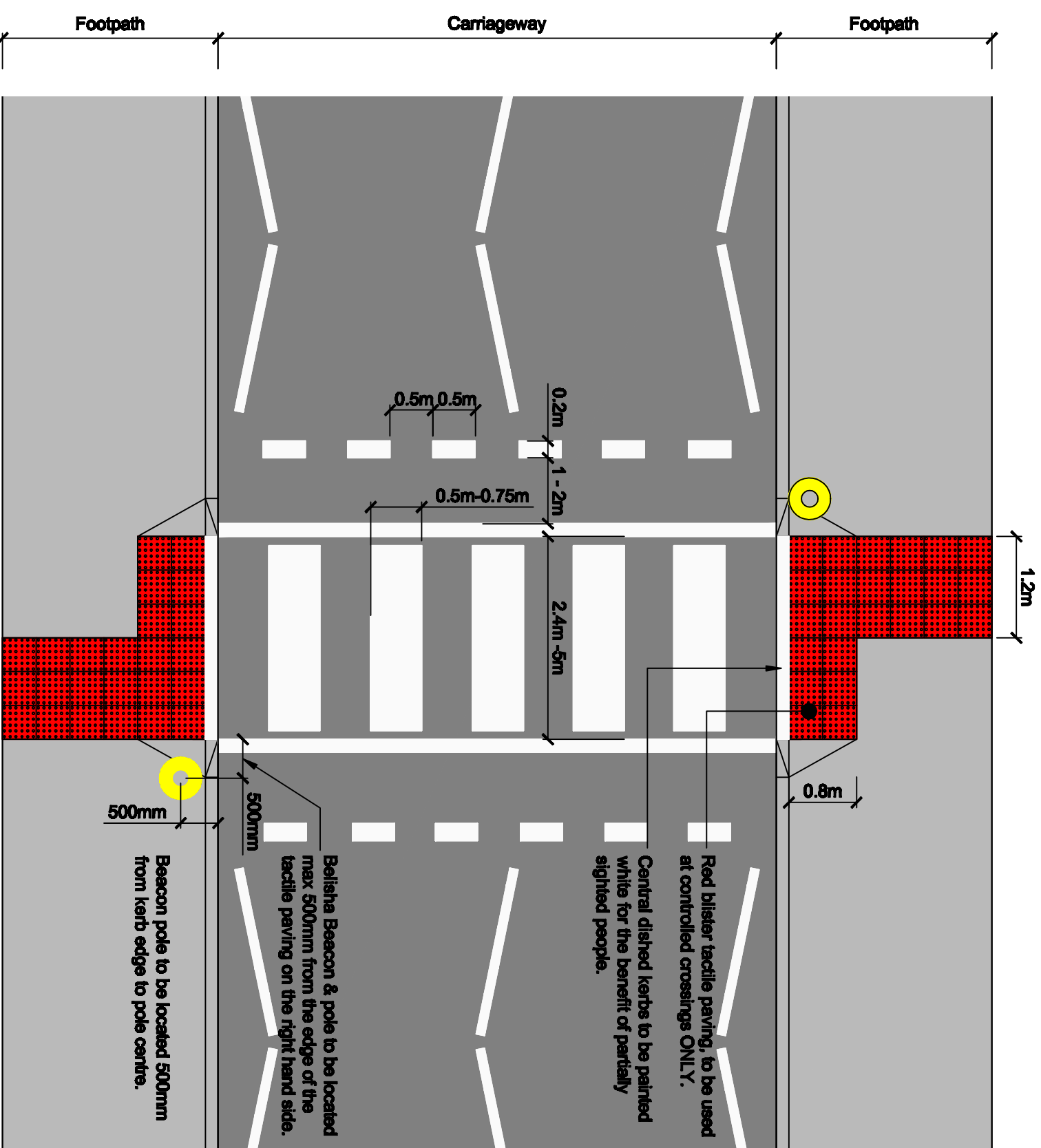
Where the carriageway width exceeds 7m provide a central refuge island.

Note:
Belisha beacons must be provided at all Zebra crossings.



Beacon Pole Elevation

Ref: Traffic Management Guidelines p. 155.
S.I. 181 (1997)-38.



Zebra Crossing