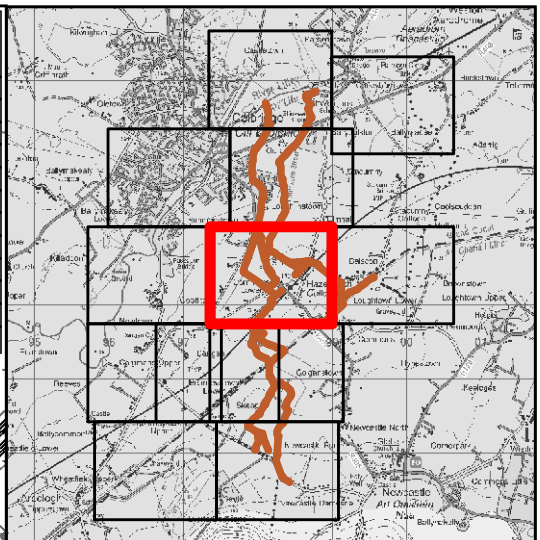


Node Label	Water Level (OD) 10% AEP	Flow (m³/s) 10% AEP	Water Level (OD) 1% AEP	Flow (m³/s) 1% AEP	Water Level (OD) 0.1% AEP	Flow (m³/s) 0.1% AEP
09SHIA00001	55.69	0.003	55.92	0.006	56.10	0.02
09SHIN00299I	55.88	0.04	56.23	0.26	56.45	0.27
09SHIN00295D	55.81	0.08	56.22	0.27	56.45	0.27
09SHIN00272	55.64	8.05	56.10	12.14	56.30	16.15
09SHIN00221	55.16	8.26	55.71	12.46	55.95	13.72
09BAL00152	63.22	2.51	63.76	3.45	66.91	4.54
09BAL00062	59.96	6.29	60.24	9.42	61.56	12.25
09HAZE00251	55.71	1.57	57.43	1.95	60.27	1.97
09HAZE00201	55.19	1.89	56.59	1.99	58.43	2.70
09HAZE00190	55.18	2.03	55.77	2.77	56.22	3.12
09STR00014D	56.33	0.06	56.37	0.09	56.64	0.30
09STR00005X	56.30	0.13	56.33	0.21	56.57	0.73



Ordnance Survey Ireland Licence No. EN 0005015 ©
Ordnance Survey Ireland/Government of Ireland

Legend

- 10% Fluvial AEP Event
- 1% Fluvial AEP Event
- 0.1% Fluvial AEP Event
- Modelled River Centreline
- Node Point
- Node ID
- Node Label

REV:	NOTE:	DATE:
------	-------	-------

rps MAKING COMPLEX EASY
 Elmwood House 4(0) 28 90 667914
 74 Boucher Road 4(0) 28 90 668286
 Belfast W www.rpsgroup.com
 BT12 6RZE Ireland@rpsgroup.com

CLIENT

 Kildare County Council
 Kildare County Council, Ballinacorney, Ballinacorney, Kildare, Ireland

PROJECT
HAZELHATCH FURTHER STUDY

TITLE
**HAZELHATCH MRFS
 FLUVIAL FLOOD EXTENT**

Drawing Status	Sheet Size	Drawing Scale
Final	A3	1:5000

Drawing Number	Datum
E09CEL_EXFMZ_F2_14	-

Project Leader	Drawn By	Date	Initial Review
S.P.	F.M.C.	16 September 2020	M.N.

