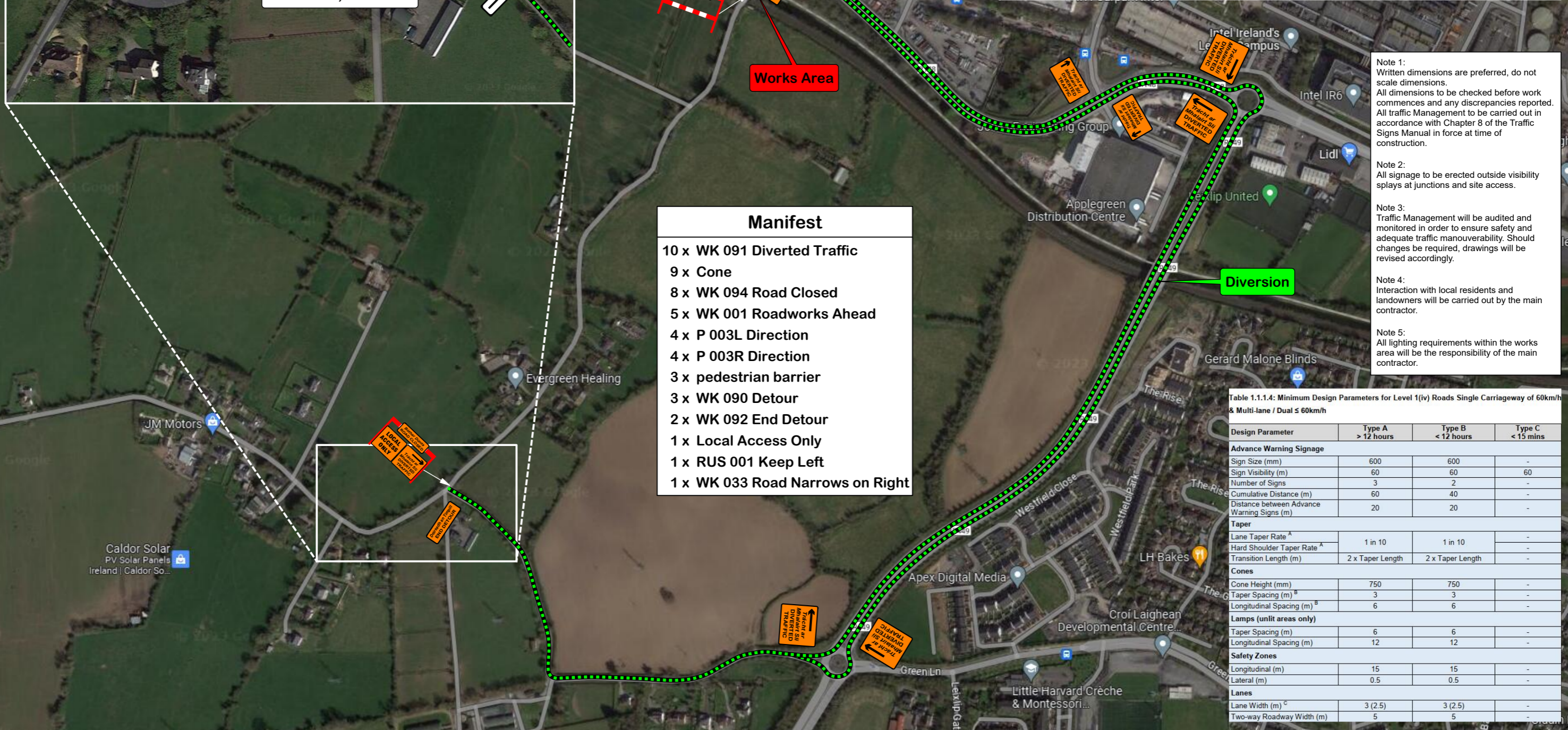
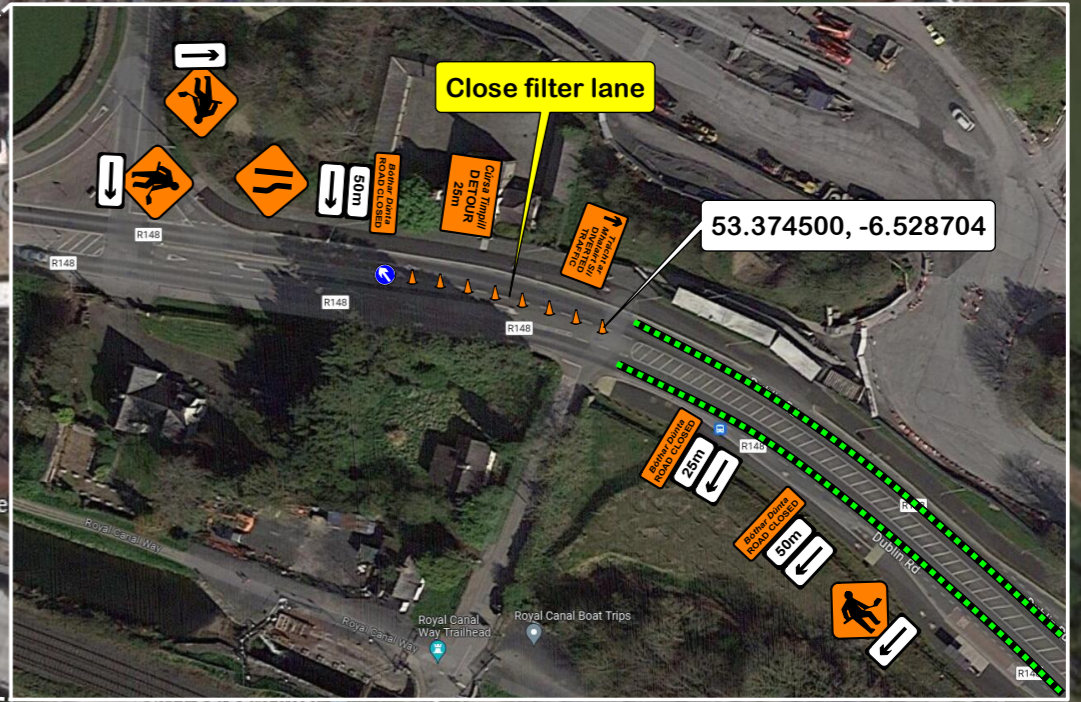
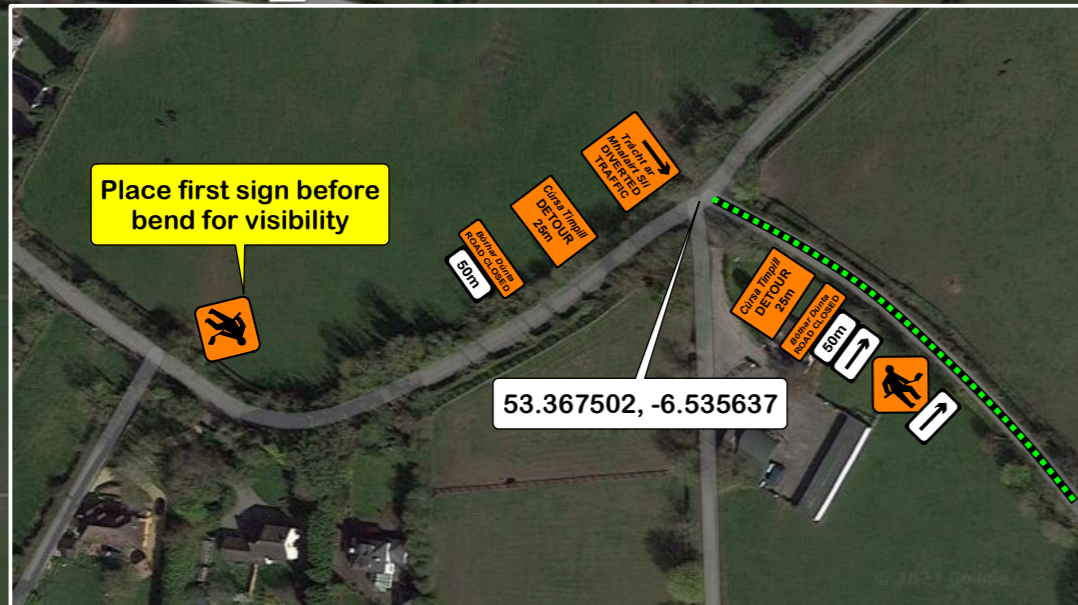




**Date:** 21/07/2023 **Author:** THM/JC **Project:** THM

**Comments:**  
Traffic Management Plan to enable THM with works at Level Crossing XG014 Blakestown in Co. Kildare.



Manifest
10 x WK 091 Diverted Traffic
9 x Cone
8 x WK 094 Road Closed
5 x WK 001 Roadworks Ahead
4 x P 003L Direction
4 x P 003R Direction
3 x pedestrian barrier
3 x WK 090 Detour
2 x WK 092 End Detour
1 x Local Access Only
1 x RUS 001 Keep Left
1 x WK 033 Road Narrows on Right

- Note 1: Written dimensions are preferred, do not scale dimensions. All dimensions to be checked before work commences and any discrepancies reported. All traffic Management to be carried out in accordance with Chapter 8 of the Traffic Signs Manual in force at time of construction.
- Note 2: All signage to be erected outside visibility splays at junctions and site access.
- Note 3: Traffic Management will be audited and monitored in order to ensure safety and adequate traffic manoeuvrability. Should changes be required, drawings will be revised accordingly.
- Note 4: Interaction with local residents and landowners will be carried out by the main contractor.
- Note 5: All lighting requirements within the works area will be the responsibility of the main contractor.

Table 1.1.1.4: Minimum Design Parameters for Level 1(iv) Roads Single Carriageway of 60km/h & Multi-lane / Dual ≤ 60km/h

Design Parameter	Type A > 12 hours	Type B < 12 hours	Type C < 15 mins
<b>Advance Warning Signage</b>			
Sign Size (mm)	600	600	-
Sign Visibility (m)	60	60	60
Number of Signs	3	2	-
Cumulative Distance (m)	60	40	-
Distance between Advance Warning Signs (m)	20	20	-
<b>Taper</b>			
Lane Taper Rate <sup>A</sup>	1 in 10	1 in 10	-
Hard Shoulder Taper Rate <sup>A</sup>	-	-	-
Transition Length (m)	2 x Taper Length	2 x Taper Length	-
<b>Cones</b>			
Cone Height (mm)	750	750	-
Taper Spacing (m) <sup>B</sup>	3	3	-
Longitudinal Spacing (m) <sup>B</sup>	6	6	-
<b>Lamps (unlit areas only)</b>			
Taper Spacing (m)	6	6	-
Longitudinal Spacing (m)	12	12	-
<b>Safety Zones</b>			
Longitudinal (m)	15	15	-
Lateral (m)	0.5	0.5	-
<b>Lanes</b>			
Lane Width (m) <sup>C</sup>	3 (2.5)	3 (2.5)	-
Two-way Roadway Width (m)	5	5	-